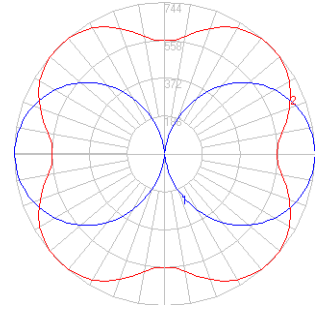


BEGA

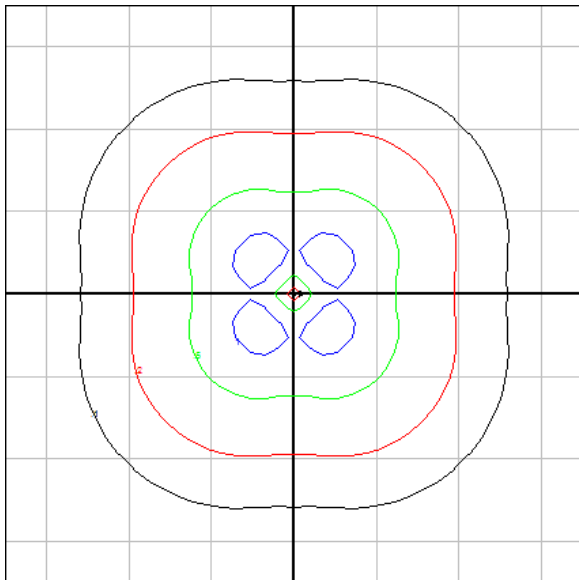
Photometric Filename: 99 877.IES

TEST: NA
TEST LAB: NA
DATE: 10/1/13
LUMINAIRE: 99 877
LAMP: 151.2W LED



Characteristics

IES Classification	Type VS
Longitudinal Classification	Very Long
Lumens Per Lamp	N.A.
Total Lamp Lumens	N.A.
Luminaire Lumens	6272
Downward Total Efficiency	N.A.
Total Luminaire Efficiency	N.A.
Luminaire Efficacy Rating (LER)	51
Total Luminaire Watts	124
Ballast Factor	1.00
Upward Waste Light Ratio	0.50
Max. Cd.	743.9 (45H, 90V)
Max. Cd. (<90 Vert.)	741.2 (45H, 87.5V)
Max. Cd. (At 90 Deg. Vert.)	743.9 (11.9%Lamp)
Max. Cd. (80 to <90 Deg. Vert.)	741.2 (11.8%Lamp)
Cutoff Classification (deprecated)	Non-Cutoff
R9 Value	N.A.

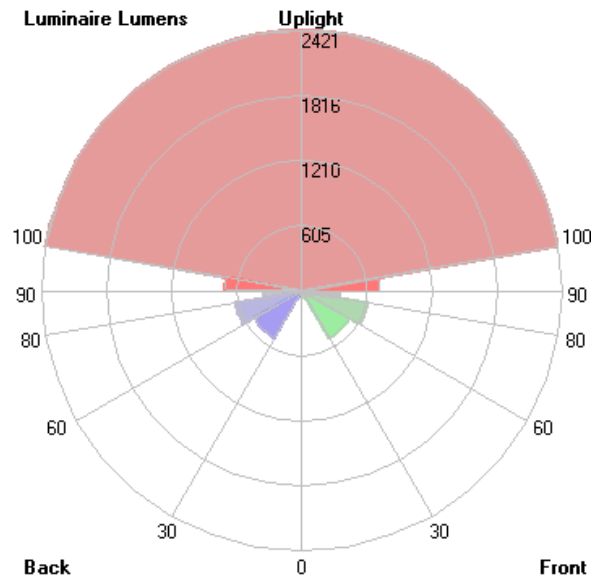


Mounting Height = 13 ft. Grid Spacing = 15 ft.

Lum. Classification System (LCS)

LCS Zone	Lumens %Lamp %Lum
FL(0-30)	70.8 1.1 1.1
FM(30-60)	510.8 8.1 8.1
FH(60-80)	627.2 10.0 10.0
FVH(80-90)	358.4 5.7 5.7
BL(0-30)	70.8 1.1 1.1
BM(30-60)	510.8 8.1 8.1
BH(60-80)	627.2 10.0 10.0
BVH(80-90)	358.4 5.7 5.7
UL(90-100)	716.9 11.4 11.4
UH(100-180)	2421.0 38.6 38.6
Total	6272.3 99.8 100.0

BUG Rating B2-U5-G3



In the interest of product improvement, BEGA reserves the right to make technical changes without notice.

BEGA 1000 Bega Way, Carpinteria, CA 93013 (805)684-0533 Fax (805)566-9474 www.bega-us.com © Copyright BEGA-US 2015

7/27/2015