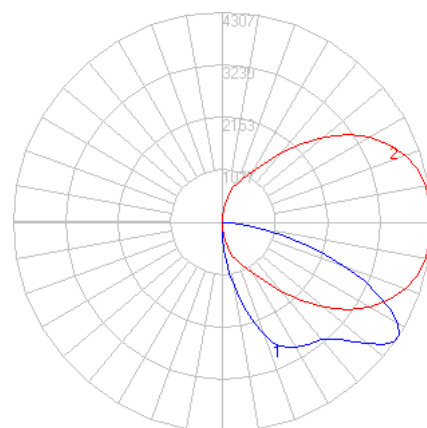


BEGA

Photometric Filename: 99519.IES

TEST: BE_99519
TEST LAB: BEGA
DATE: 8/30/2016
LUMINAIRE: 99 519
LAMP: 31.5W LED



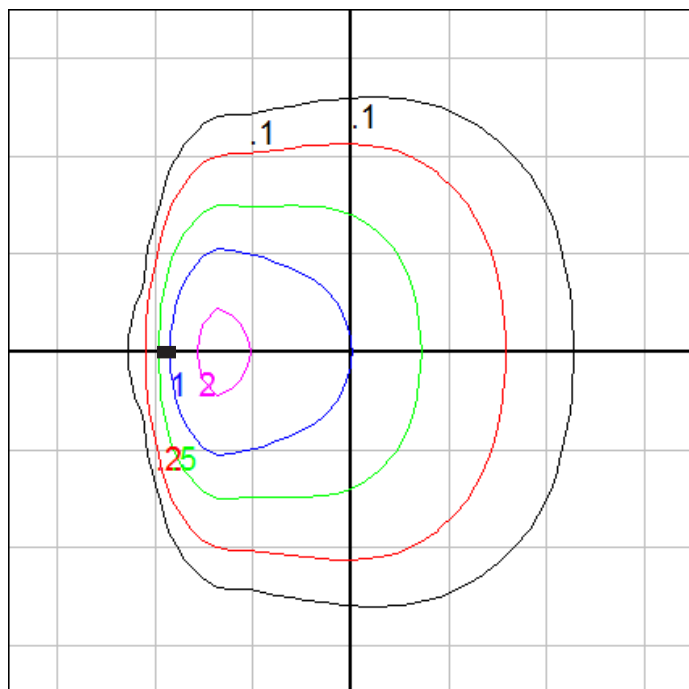
Characteristics

IES Classification	Type IV
Longitudinal Classification	Very Short
Lumens Per Lamp	N.A. (absolute)
Total Lamp Lumens	N.A. (absolute)
Luminaire Lumens	4741
Downward Total Efficiency	N.A.
Total Luminaire Efficiency	N.A.
Luminaire Efficacy Rating (LER)	128
Total Luminaire Watts	37
Ballast Factor	1.00
Upward Waste Light Ratio	0.00
Max. Cd.	4311 (360H, 57.5V)
Max. Cd. (<90 Vert.)	4311 (360H, 57.5V)
Max. Cd. (At 90 Deg. Vert.)	0 (0.0%Lum)
Max. Cd. (80 to <90 Deg. Vert.)	753 (15.9%Lum)
Cutoff Classification (deprecated)	N.A. (absolute)

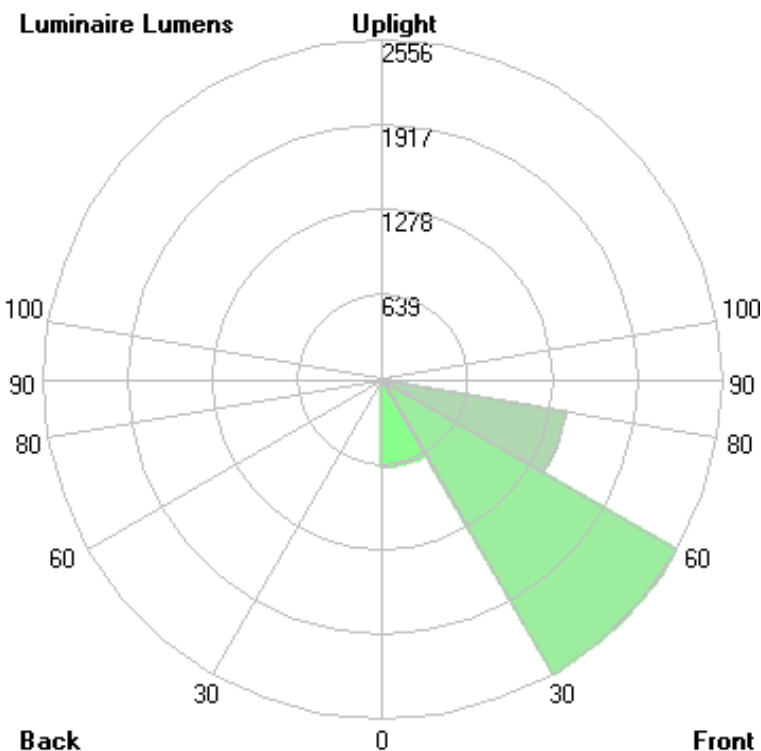
Lum. Classification System (LCS)

LCS Zone	Lumens	%Lamp	%Lum
FL (0-30)	656.2	N.A.	13.8
FM (30-60)	2555.9	N.A.	53.9
FH (60-80)	1396.6	N.A.	29.5
FVH (80-90)	55.7	N.A.	1.2
BL (0-30)	39.0	N.A.	0.8
BM (30-60)	27.7	N.A.	0.6
BH (60-80)	8.0	N.A.	0.2
BVH (80-90)	1.8	N.A.	0.0
UL (90-100)	0.0	N.A.	0.0
UH (100-180)	0.0	N.A.	0.0
Total	4740.9	N.A.	100.0

BUG Rating B0-U0-G1



Mounting Height = 29 ft. 8in. (Pole 2908SF)
Grid Spacing = 20 ft.



In the interest of product improvement, BEGA reserves the right to make technical changes without notice.

BEGA 1000 Bega Way, Carpinteria, CA 93013 (805)684-0533 Fax (805)566-9474 www.bega-us.com © Copyright BEGA-US 2018

3/22/2018