

BEGA

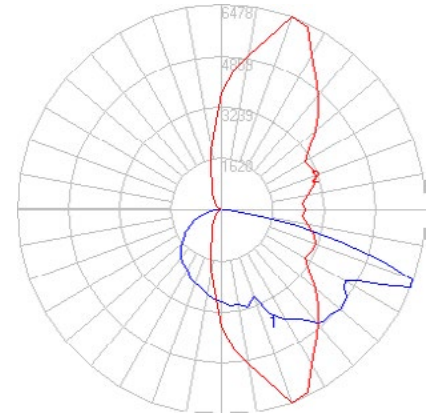


Photometric Filename: 99481.IES

TEST: L071704010
 TEST LAB: LIGHT LABORATORY, INC.
 DATE: 7/18/2017
 LUMINAIRE: 99 481
 LAMP: (2) 94.2W LED

All results in accordance with IESNA LM-79

*Report based on a single IES file, see below for twin head iso-footcandle template



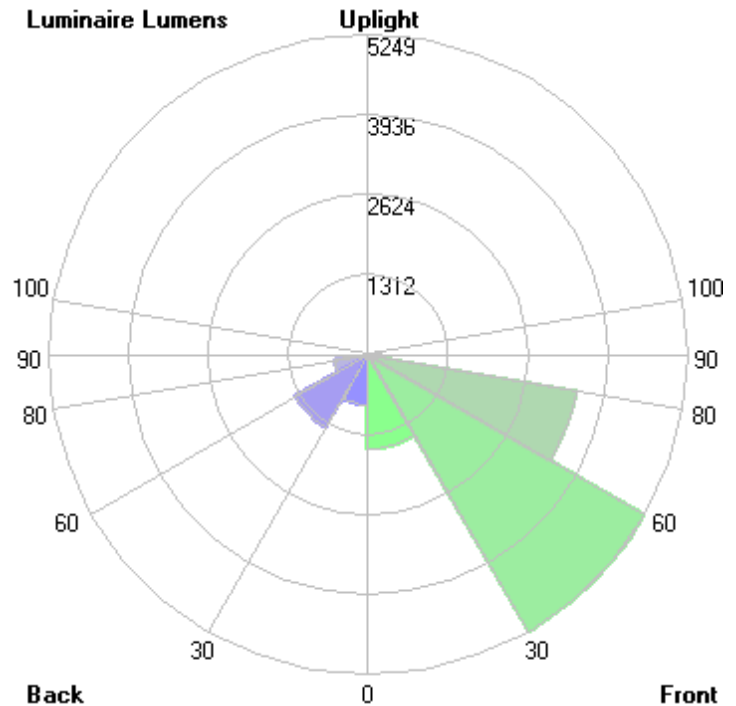
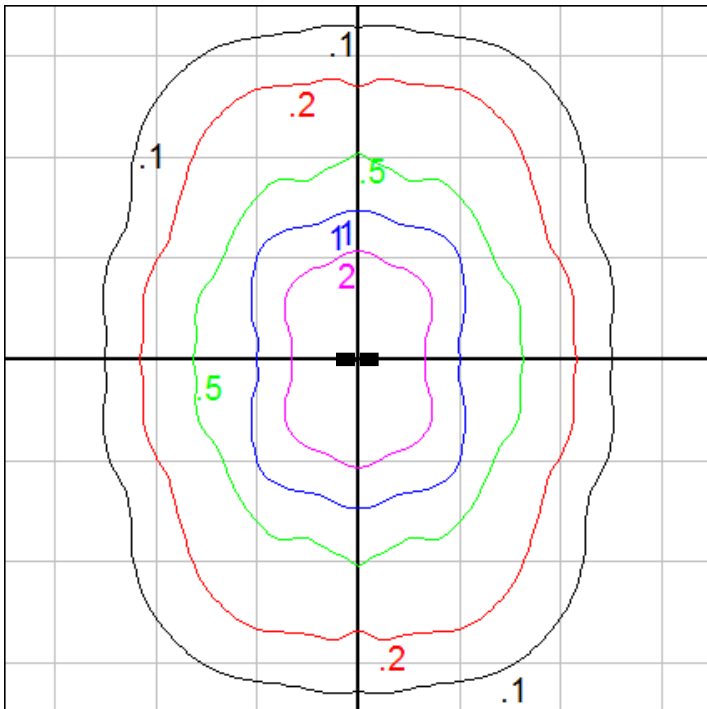
Characteristics

IES Classification	Type III
Longitudinal Classification	Medium
Lumens Per Lamp	N.A. (absolute)
Total Lamp Lumens	N.A. (absolute)
Luminaire Lumens	13282
Downward Total Efficiency	N.A.
Total Luminaire Efficiency	N.A.
Luminaire Efficacy Rating (LER)	115
Total Luminaire Watts	115.4
Ballast Factor	1.00
Upward Waste Light Ratio	0.00
Max. Cd.	6478 (70H, 67.5V)
Max. Cd. (<90 Vert.)	6478 (70H, 67.5V)
Max. Cd. (At 90 Deg. Vert.)	0 (0.0%Lum)
Max. Cd. (80 to <90 Deg. Vert.)	1989 (15.0%Lum)
Cutoff Classification (deprecated)	N.A. (absolute)

Lum. Classification System (LCS)

LCS Zone	Lumens	%Lamp	%Lum
FL (0-30)	1541.5	N.A.	11.6
FM (30-60)	5248.5	N.A.	39.5
FH (60-80)	3468.6	N.A.	26.1
FVH (80-90)	231.3	N.A.	1.7
BL (0-30)	830.3	N.A.	6.3
BM (30-60)	1367.8	N.A.	10.3
BH (60-80)	552.5	N.A.	4.2
BVH (80-90)	41.7	N.A.	0.3
UL (90-100)	0.0	N.A.	0.0
UH (100-180)	0.0	N.A.	0.0
Total	13282.2	N.A.	100.0

BUG Rating B2-U0-G3



Mounting Height = 34 ft. 8 in. (Pole - 3408SF)
 Grid Spacing = 35 ft.

In the interest of product improvement, BEGA reserves the right to make technical changes without notice.

BEGA

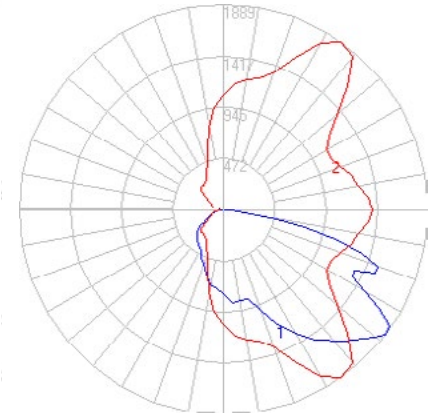


Photometric Filename: 99481AMB.IES

TEST: L061914305
 TEST LAB: LIGHT LABORATORY, INC.
 DATE: 7/2/2019
 LUMINAIRE: 99481 Amber
 LAMP: 105.6W LED

All results in accordance with IESNA LM-79

*Report based on a single IES file, see below for twin head iso-footcandle template



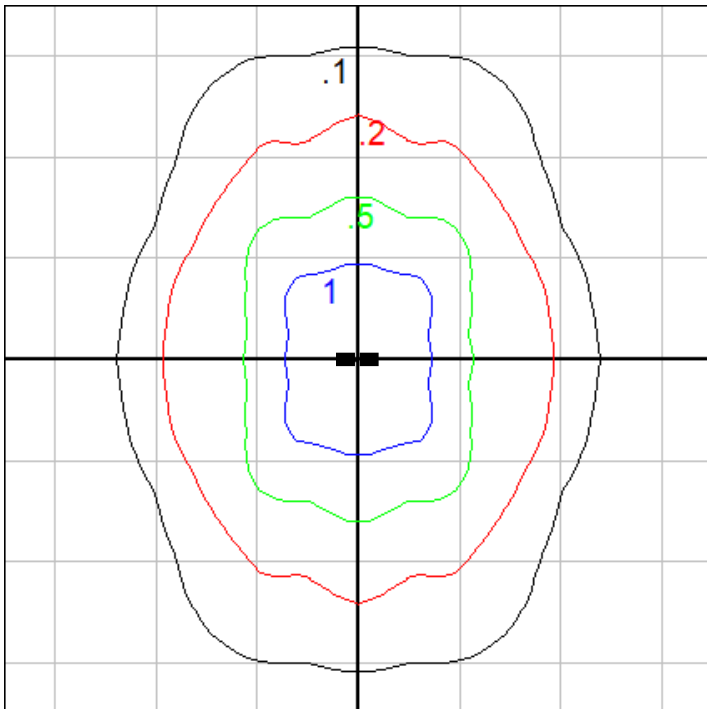
Characteristics

IES Classification	Type III
Longitudinal Classification	Short
Lumens Per Lamp	N.A. (absolute)
Total Lamp Lumens	N.A. (absolute)
Luminaire Lumens	3735
Downward Total Efficiency	N.A.
Total Luminaire Efficiency	N.A.
Luminaire Efficacy Rating (LER)	31
Total Luminaire Watts	120.4
Ballast Factor	1.00
Upward Waste Light Ratio	0.00
Max. Cd.	1889 (55H, 52.5V)
Max. Cd. (<90 Vert.)	1889 (55H, 52.5V)
Max. Cd. (At 90 Deg. Vert.)	0 (0.0%Lum)
Max. Cd. (80 to <90 Deg. Vert.)	500 (13.4%Lum)
Cutoff Classification (deprecated)	N.A. (absolute)

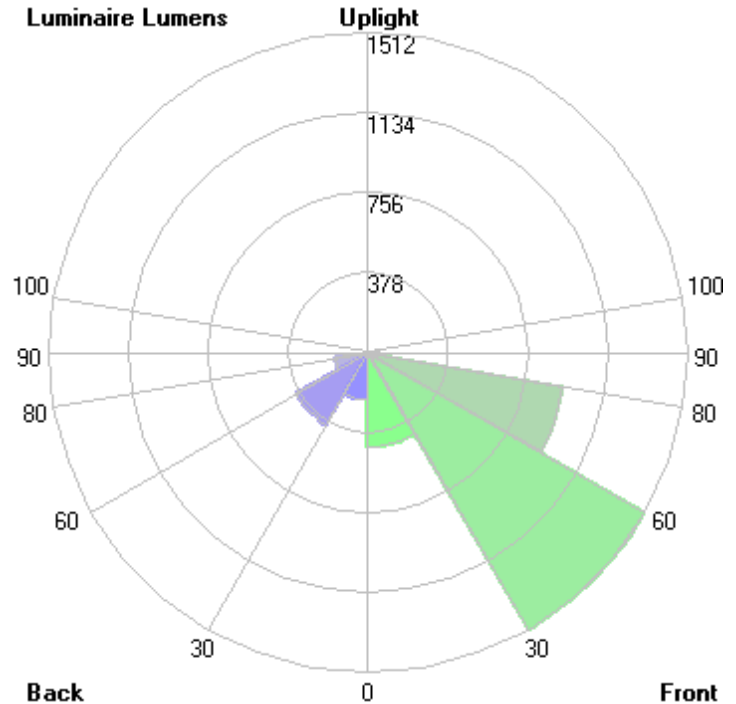
Lum. Classification System (LCS)

LCS Zone	Lumens	%Lamp	%Lum
FL (0-30)	446.3	N.A.	11.9
FM (30-60)	1511.7	N.A.	40.5
FH (60-80)	937.6	N.A.	25.1
FVH(80-90)	54.6	N.A.	1.5
BL (0-30)	224.5	N.A.	6.0
BM (30-60)	392.7	N.A.	10.5
BH (60-80)	156.6	N.A.	4.2
BVH(80-90)	10.8	N.A.	0.3
UL (90-100)	0.0	N.A.	0.0
UH (100-180)	0.0	N.A.	0.0
Total	3734.8	N.A.	100.0

BUG Rating B1-U0-G1



Mounting Height = 29 ft. 8 in. (Pole - 2908HR)
 Grid Spacing = 25 ft.



In the interest of product improvement, BEGA reserves the right to make technical changes without notice.