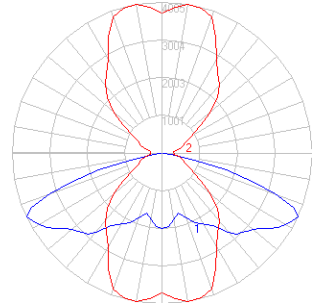


BEGA

Photometric Filename: 9460LED.IES

TEST: L12131313
 TEST LAB: LIGHT LABORATORY, INC.
 DATE: 12/20/2013
 LUMINAIRE: 99 460
 LAMP: 104W LED

All results in accordance with IESNA LM-79-08



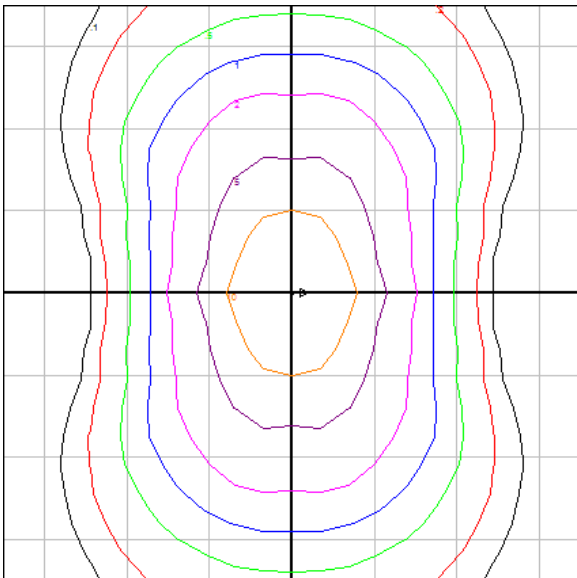
Characteristics

IES Classification	Type II
Longitudinal Classification	Short
Lumens Per Lamp	N.A. (absolute)
Total Lamp Lumens	N.A. (absolute)
Luminaire Lumens	9770
Downward Total Efficiency	N.A.
Total Luminaire Efficiency	N.A.
Luminaire Efficacy Rating (LER)	88
Total Luminaire Watts	111.58
Ballast Factor	1.00
Upward Waste Light Ratio	0.00
Max. Cd.	4005 (80H, 65V)
Max. Cd. (<90 Vert.)	4005 (80H, 65V)
Max. Cd. (At 90 Deg. Vert.)	0 (0.0%Lum)
Max. Cd. (80 to <90 Deg. Vert.)	278 (2.8%Lum)
Cutoff Classification (deprecated)	N.A. (absolute)
R9 Value	10.86

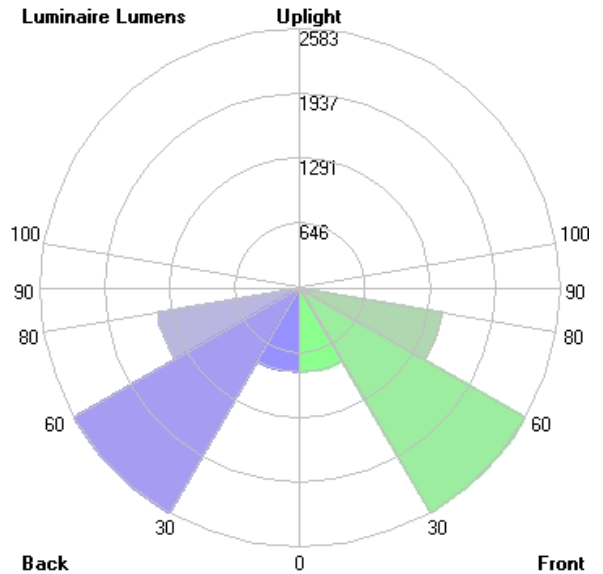
Lum. Classification System (LCS)

<u>LCS Zone</u>	<u>Lumens</u>	<u>%Lamp</u>	<u>%Lum</u>
FL(0-30)	838.5	N.A.	8.6
FM(30-60)	2583.0	N.A.	26.4
FH(60-80)	1431.3	N.A.	14.6
FVH(80-90)	33.0	N.A.	0.3
BL(0-30)	838.5	N.A.	8.6
BM(30-60)	2583.0	N.A.	26.4
BH(60-80)	1431.3	N.A.	14.6
BVH(80-90)	33.0	N.A.	0.3
UL(90-100)	0.0	N.A.	0.0
UH(100-180)	0.0	N.A.	0.0
Total	9771.6	N.A.	100.0

BUG Rating B3-U0-G3



Mounting Height = 10 ft. Grid Spacing = 10 ft.



In the interest of product improvement, BEGA reserves the right to make technical changes without notice.