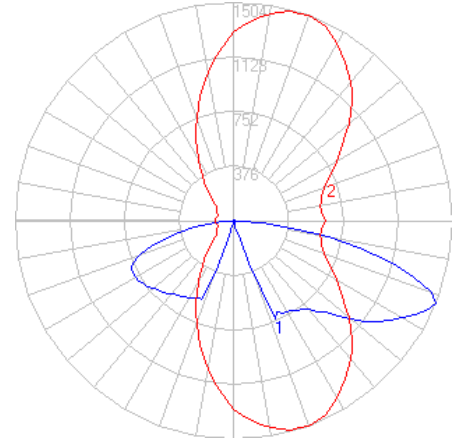


BEGA

Photometric Filename: 88067.IES

TEST: BE_88067
 TEST LAB: BEGA
 DATE: 11/4/2015
 LUMINAIRE: 88 067
 LAMP: 31W LED



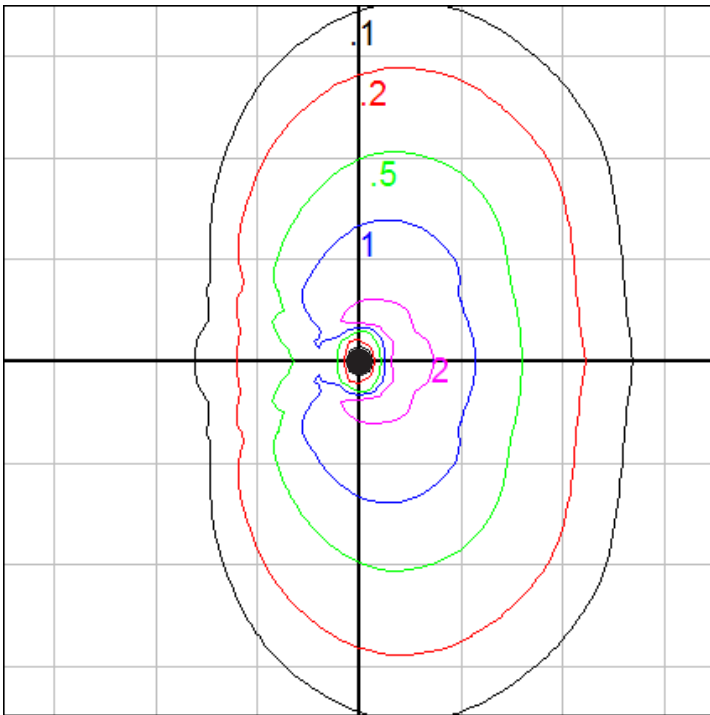
Characteristics

IES Classification	Type IV
Longitudinal Classification	Medium
Lumens Per Lamp	N.A. (absolute)
Total Lamp Lumens	N.A. (absolute)
Luminaire Lumens	3279
Downward Total Efficiency	N.A.
Total Luminaire Efficiency	N.A.
Luminaire Efficacy Rating (LER)	91
Total Luminaire Watts	36
Ballast Factor	1.00
Upward Waste Light Ratio	0.00
Max. Cd.	1504.2 (290H, 67.5V)
Max. Cd. (<90 Vert.)	1504.2 (290H, 67.5V)
Max. Cd. (At 90 Deg. Vert.)	3.1 (0.1%Lum)
Max. Cd. (80 to <90 Deg. Vert.)	682.8 (20.7%Lum)
Cutoff Classification (deprecated)	N.A. (absolute)

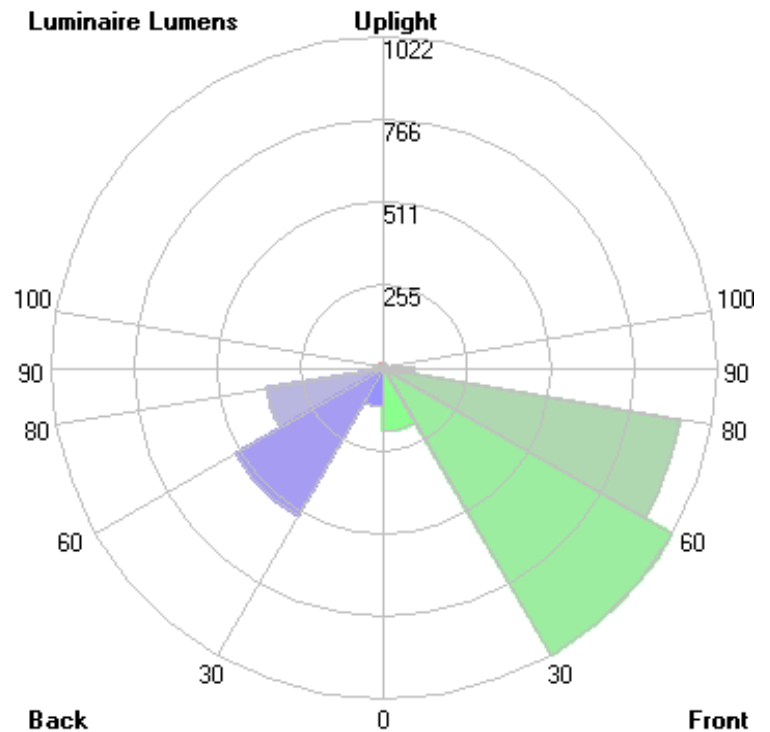
Lum. Classification System (LCS)

LCS Zone	Lumens	%Lamp	%Lum
FL (0-30)	194.9	N.A.	5.9
FM (30-60)	1021.9	N.A.	31.0
FH (60-80)	922.5	N.A.	28.0
FVH (80-90)	93.5	N.A.	2.8
BL (0-30)	119.5	N.A.	3.6
BM (30-60)	524.7	N.A.	15.9
BH (60-80)	365.0	N.A.	11.1
BVH (80-90)	36.7	N.A.	1.1
UL (90-100)	0.0	N.A.	0.0
UH (100-180)	0.0	N.A.	0.4
Total	3278.6	N.A.	100.0

BUG Rating B1-U0-G1



Grid Spacing = 15 ft.



In the interest of product improvement, BEGA reserves the right to make technical changes without notice.