

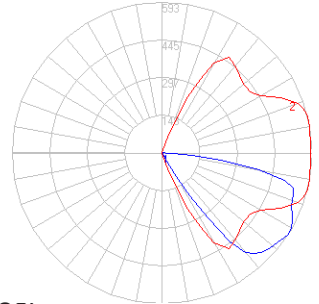
BEGA

Photometric Filename: 84815.ies

TEST: BE_84815
 TEST LAB: BEGA
 DATE: 5/23/2017
 LUMINAIRE: 84 815
 LAMP: 16.4W LED



All results in accordance with IESNA LM-79-08



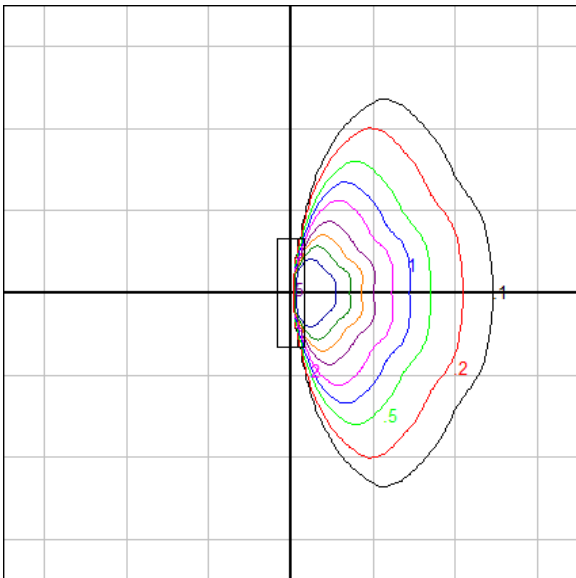
Characteristics

IES Classification	Type IV
Longitudinal Classification	Very Short
Lumens Per Lamp	N.A. (absolute)
Total Lamp Lumens	N.A. (absolute)
Luminaire Lumens	712
Downward Total Efficiency	N.A.
Total Luminaire Efficiency	N.A.
Luminaire Efficacy Rating (LER)	37
Total Luminaire Watts	19
Ballast Factor	1.00
Upward Waste Light Ratio	0.01
Max. Cd.	593.4 (345H, 57.5V)
Max. Cd. (<90 Vert.)	593.4 (345H, 57.5V)
Max. Cd. (At 90 Deg. Vert.)	14.6 (2.1%Lum)
Max. Cd. (80 to <90 Deg. Vert.)	387.6 (54.4%Lum)
Cutoff Classification (deprecated)	N.A. (absolute)

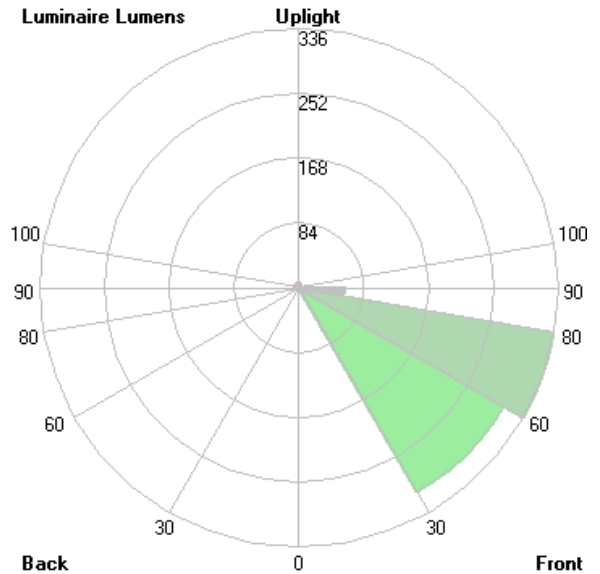
Lum. Classification System (LCS)

LCS Zone	Lumens	%Lamp	%Lum
FL (0-30)	2.2	N.A.	0.3
FM (30-60)	305.9	N.A.	43.0
FH (60-80)	335.6	N.A.	47.2
FVH(80-90)	59.4	N.A.	8.3
BL (0-30)	0.0	N.A.	0.0
BM (30-60)	< 0.05	N.A.	0.0
BH (60-80)	< 0.05	N.A.	0.0
BVH(80-90)	< 0.05	N.A.	0.0
UL (90-100)	3.7	N.A.	0.5
UH (100-180)	4.9	N.A.	0.7
Total	711.7	N.A.	100.0

BUG Rating B0-U1-G1



Grid Spacing = 3 ft.



In the interest of product improvement, BEGA reserves the right to make technical changes without notice.