

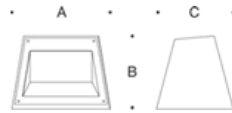
Tools Required:

4mm hex key

CSA certified to U.S. and Canadian standards. Suitable for wet locations.

Protection Class: IP67

Weight: 5.73 lbs.



Dimensions

- A:** 9"
- B:** 6-3/4"
- C:** 7-1/8"



Notice to Installer for 84 815:

1. A separate wiring box suitable for outdoor locations (Bell #5361-0 or equivalent) for power supply must be provided (by others).
2. Luminaire mounts directly to a firmly mounted wiring box recessed in the ground. Adequate foundation required (by others).
3. Wiring box must be flush with the finished surface.
4. Suitable for ground mount applications ONLY.

WARNING: LEDs are high quality electrical components. Please avoid touching them directly during installation.

Finished surface preparation for 84 815:

1. Establish location of wiring box in ground directly below the proposed location of luminaire.
2. Provide suitable foundation for wiring box.
3. Top of box must be flush with finished surface and should be level under luminaire footprint.

WARNING: Location of luminaire on finished surface grade to be free of standing/pooling water.

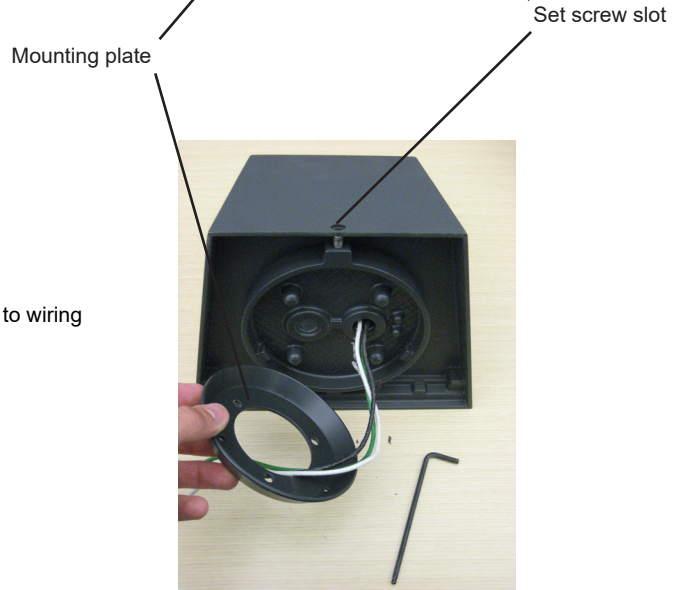
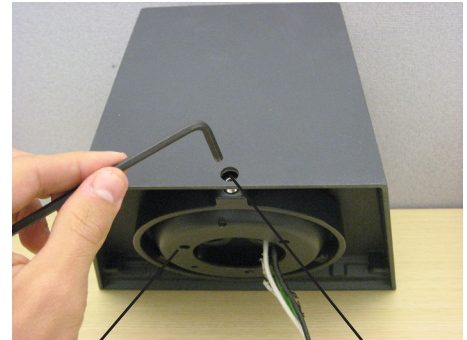
84 815 installation:

1. Loosen 4mm set screw through rear slot and remove mounting plate.
2. Feed luminaire wires through mounting plate center hole.
3. Make supply wiring and luminaire wiring connection inside wiring box:
 MAIN VOLTAGE SUPPLY WIRE TO BLACK LUMINAIRE WIRE
 NEUTRAL (COMMON) SUPPLY WIRE TO WHITE LUMINAIRE WIRE
 GREEN GROUND WIRE TO GREEN LUMINAIRE WIRE

Dimming (if applicable):

DIMMING CONTROL WIRE (+) TO POSITIVE DRIVER DIM CONTROL WIRE
 DIMMING CONTROL WIRE (-) TO NEGATIVE DRIVER DIM CONTROL WIRE

4. Place a small bead of silicone around the edge of the wiring box and bolt mounting plate to wiring box using mounting hardware by others.
5. Place luminaire over mounting plate and rotate to desired orientation.
6. Tighten 4mm set screw at base to secure luminaire.



Relamping/Maintenance

Loosen (4) faceplate screws and remove cover frame with lens. Clean luminaire and lens using only solvent-free cleaners. Replace cover frame and tighten (4) hex screws, making sure gasket is seated properly.

Accessories

Please refer to the appropriate accessory installation sheet for further instruction when applicable.

Replacement Parts

Description	Part No
Lens	140719
Housing gasket	830931
Lens gasket	831152
LED driver (120-277V)	75983-02
LED module (3000K) (2x)	LED-0799/830
LED module (4000K) (2x)	LED-0799/840

Lamp: 16.4W LED Module

In the interest of product improvement, BEGA reserves the right to make technical changes without notice.