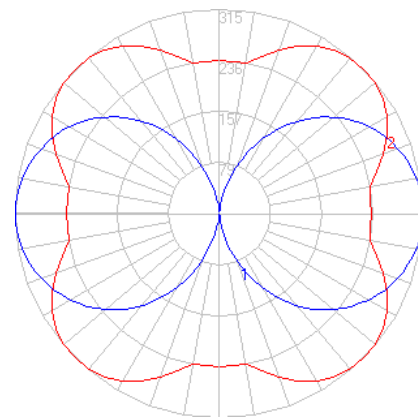


# BEGA

Photometric Filename: 84667.IES

TEST: BE\_84667  
TEST LAB: BEGA  
DATE: 2/12/2016  
LUMINAIRE: 84 667  
LAMP: 24.8W LED



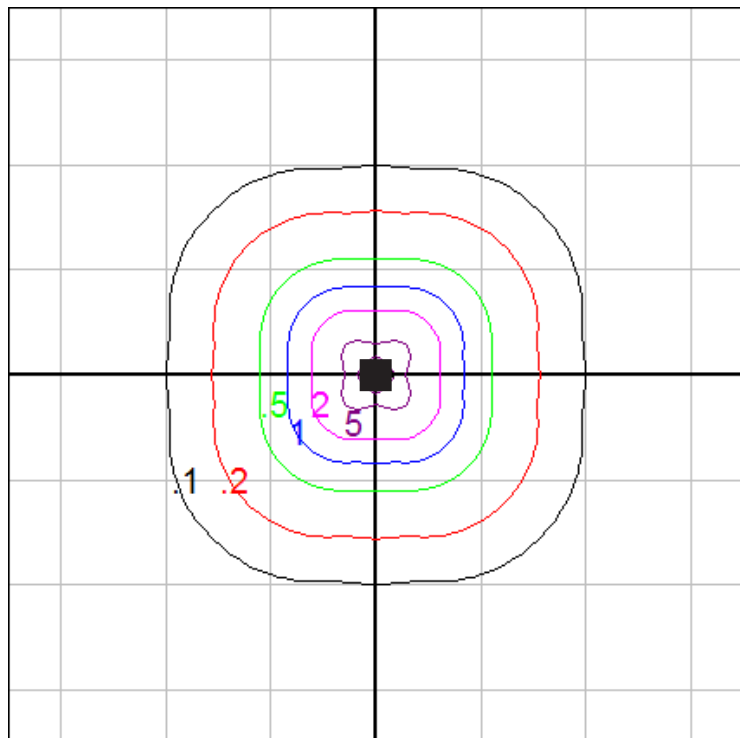
## Characteristics

IES Classification	N.A.
Longitudinal Classification	N.A.
Lumens Per Lamp	N.A. (absolute)
Total Lamp Lumens	N.A. (absolute)
Luminaire Lumens	2608
Downward Total Efficiency	N.A.
Total Luminaire Efficiency	N.A.
Luminaire Efficacy Rating (LER)	87
Total Luminaire Watts	30
Ballast Factor	1.00
Upward Waste Light Ratio	0.50
Max. Cd.	314.93 (45H, 90V)
Max. Cd. (<90 Vert.)	314.38 (45H, 87.5V)
Max. Cd. (At 90 Deg. Vert.)	314.93 (12.1%Lum)
Max. Cd. (80 to <90 Deg. Vert.)	314.38 (12.1%Lum)
Cutoff Classification (deprecated)	N.A. (absolute)

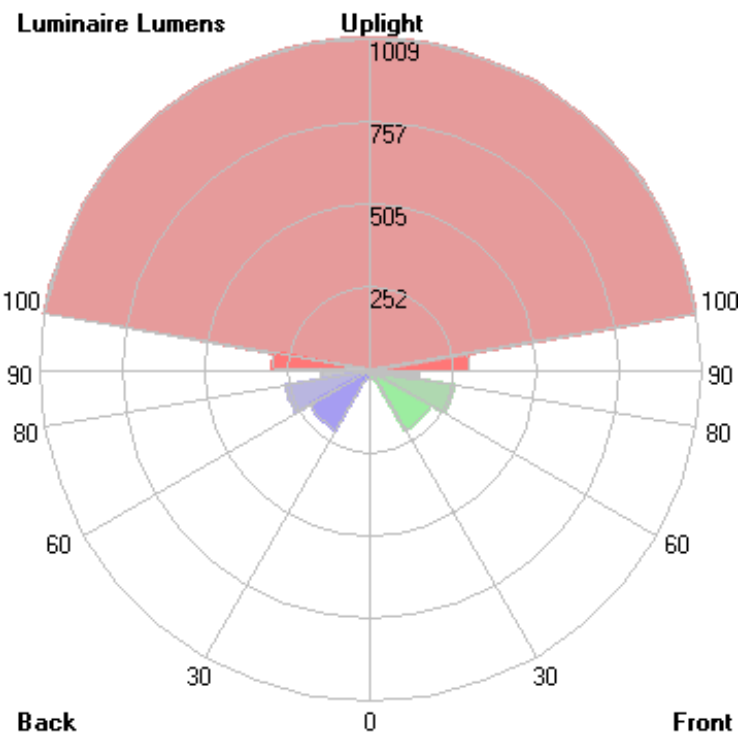
## Lum. Classification System (LCS)

LCS Zone	Lumens	%Lamp	%Lum
FL (0-30)	28.6	N.A.	1.1
FM (30-60)	212.0	N.A.	8.1
FH (60-80)	260.8	N.A.	10.0
FVH (80-90)	149.0	N.A.	5.7
BL (0-30)	28.6	N.A.	1.1
BM (30-60)	212.0	N.A.	8.1
BH (60-80)	260.8	N.A.	10.0
BVH (80-90)	149.0	N.A.	5.7
UL (90-100)	298.2	N.A.	11.4
UH (100-180)	1009.1	N.A.	38.7
Total	2608.1	N.A.	100.0

BUG Rating B1-U5-G2



Grid Spacing = 10 ft.



In the interest of product improvement, BEGA reserves the right to make technical changes without notice.

BEGA 1000 Bega Way, Carpinteria, CA 93013 (805)684-0533 Fax (805)566-9474 www.bega-us.com © Copyright BEGA-US 2018

8/27/2018