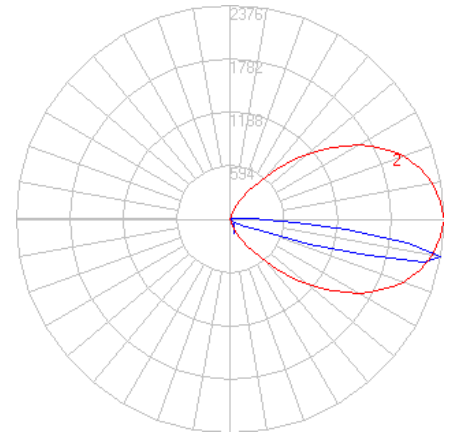


BEGA

Photometric Filename: 84081.ies

TEST: BE_84081
 TEST LAB: BEGA
 DATE: 5/14/2018
 LUMINAIRE: 84 081
 LAMP: 12.2W LED

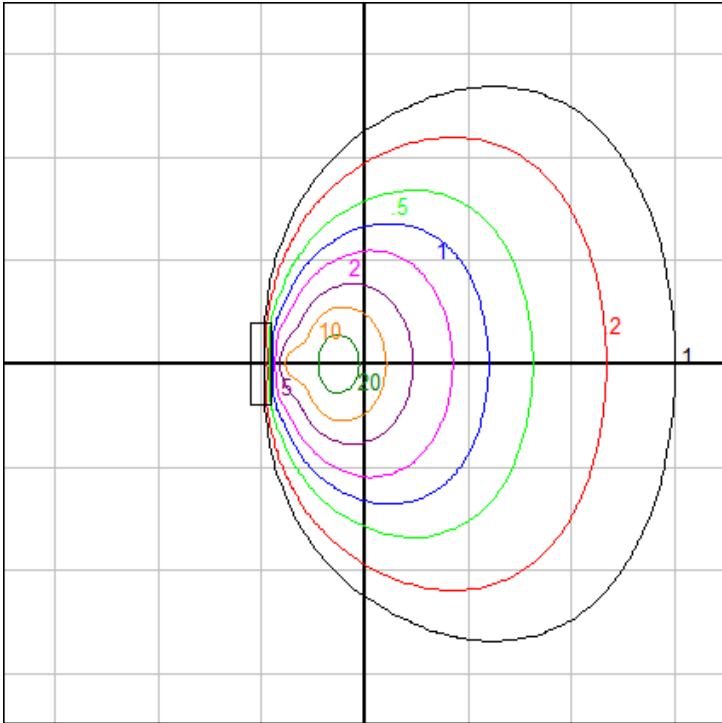


Characteristics

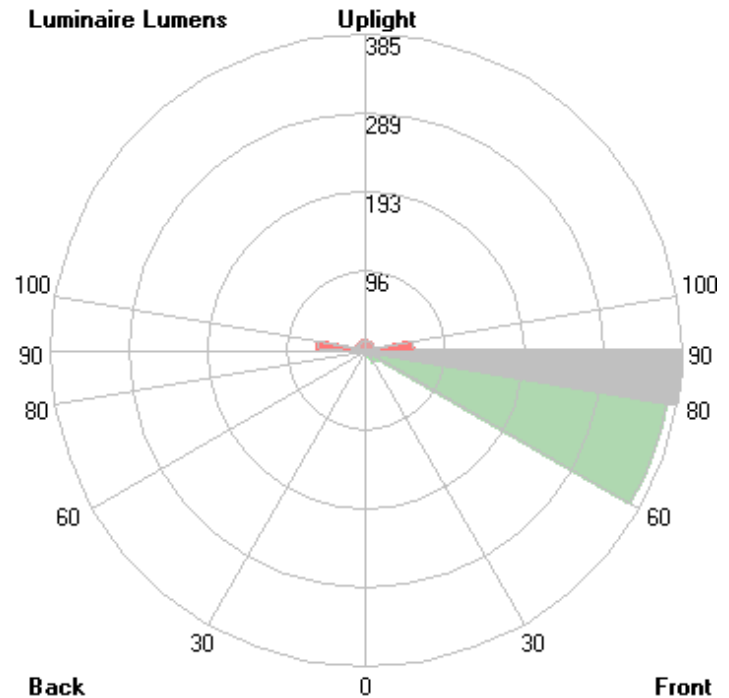
IES Classification	Type IV
Longitudinal Classification	Very Short
Lumens Per Lamp	N.A. (absolute)
Total Lamp Lumens	N.A. (absolute)
Luminaire Lumens	843
Downward Total Efficiency	N.A.
Total Luminaire Efficiency	N.A.
Luminaire Efficacy Rating (LER)	53
Total Luminaire Watts	16
Ballast Factor	1.00
Upward Waste Light Ratio	0.08
Max. Cd.	2376.3 (360H, 80V)
Max. Cd. (<90 Vert.)	2376.3 (360H, 80V)
Max. Cd. (At 90 Deg. Vert.)	403.6 (47.9%Lum)
Max. Cd. (80 to <90 Deg. Vert.)	2376.3 (281.9%Lum)
Cutoff Classification (deprecated)	N.A. (absolute)

Lum. Classification System (LCS)

LCS Zone	Lumens	%Lamp	%Lum
FL (0-30)	0.1	N.A.	0.0
FM (30-60)	17.4	N.A.	2.1
FH (60-80)	371.3	N.A.	44.1
FVH(80-90)	385.1	N.A.	45.7
BL (0-30)	< 0.05	N.A.	0.0
BM (30-60)	< 0.05	N.A.	0.0
BH (60-80)	< 0.05	N.A.	0.0
BVH(80-90)	< 0.05	N.A.	0.0
UL (90-100)	58.1	N.A.	6.9
UH (100-180)	10.8	N.A.	1.3
Total	842.8	N.A.	100.0
BUG Rating B0-U3-G3			



Grid Spacing = 5 ft.



In the interest of product improvement, BEGA reserves the right to make technical changes without notice.