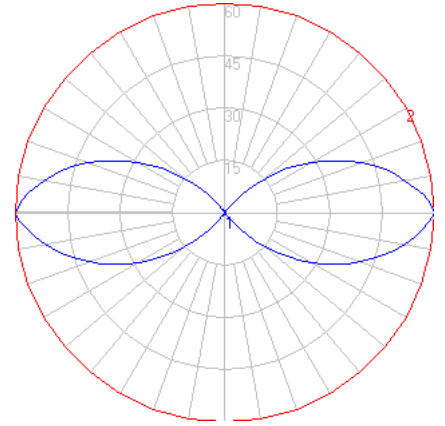


BEGA

Photometric Filename: 84029.ies

TEST: BE_84029
 TEST LAB: BEGA
 DATE: 7/19/2017
 LUMINAIRE: 84 029
 LAMP: 8.2W LED



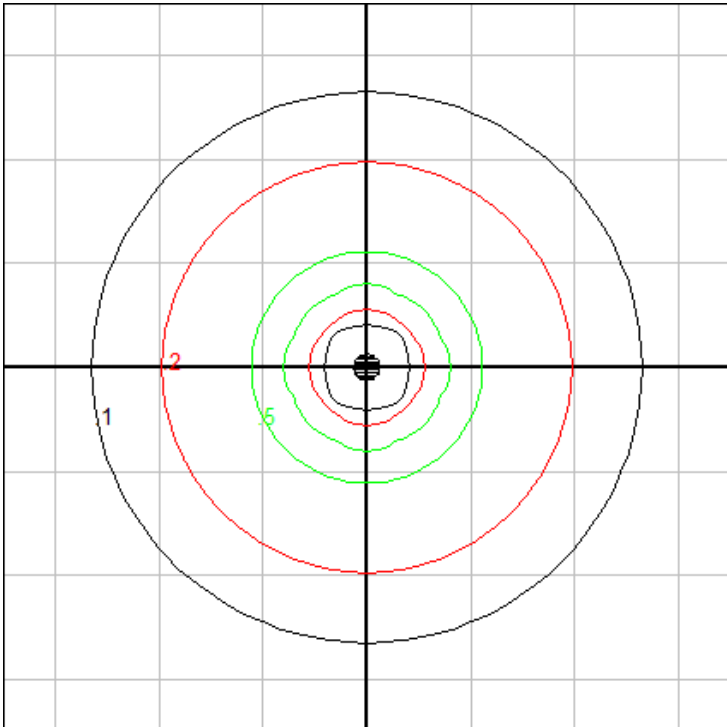
Characteristics

IES Classification	N.A.
Longitudinal Classification	N.A.
Lumens Per Lamp	N.A. (absolute)
Total Lamp Lumens	N.A. (absolute)
Luminaire Lumens	352
Downward Total Efficiency	N.A.
Total Luminaire Efficiency	N.A.
Luminaire Efficacy Rating (LER)	35
Total Luminaire Watts	10
Ballast Factor	1.00
Upward Waste Light Ratio	0.50
Max. Cd.	60.1 (0H, 90V)
Max. Cd. (<90 Vert.)	58.9 (0H, 87.5V)
Max. Cd. (At 90 Deg. Vert.)	60.1 (17.1%Lum)
Max. Cd. (80 to <90 Deg. Vert.)	58.9 (16.7%Lum)
Cutoff Classification (deprecated)	N.A. (absolute)

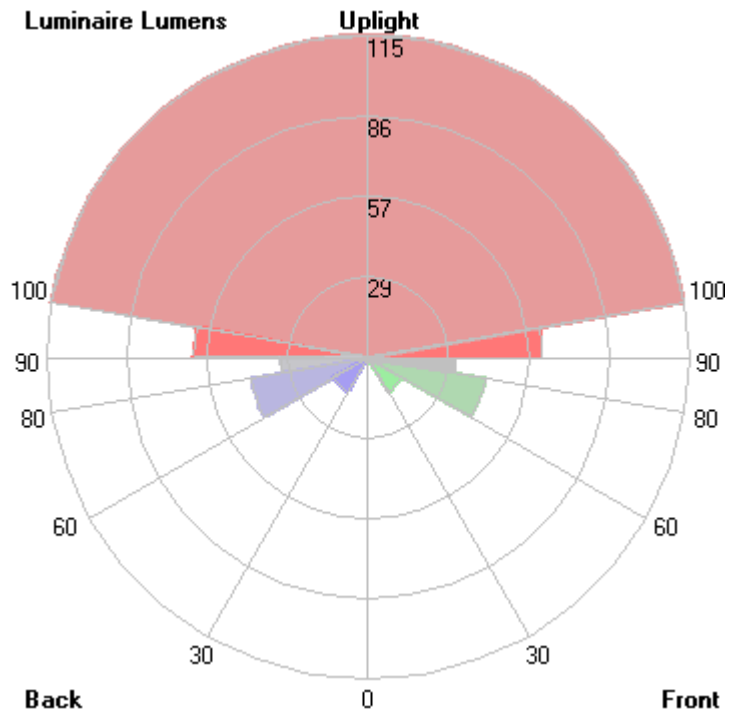
Lum. Classification System (LCS)

LCS Zone	Lumens	%Lamp	%Lum
FL (0-30)	0.2	N.A.	0.1
FM (30-60)	14.0	N.A.	4.0
FH (60-80)	42.4	N.A.	12.0
FVH(80-90)	31.0	N.A.	8.8
BL (0-30)	0.2	N.A.	0.1
BM (30-60)	14.0	N.A.	4.0
BH (60-80)	42.4	N.A.	12.0
BVH(80-90)	31.0	N.A.	8.8
UL (90-100)	62.2	N.A.	17.7
UH (100-180)	114.5	N.A.	32.5
Total	351.9	N.A.	100.0

BUG Rating B0-U3-G1



Grid Spacing = 4 ft.



In the interest of product improvement, BEGA reserves the right to make technical changes without notice.