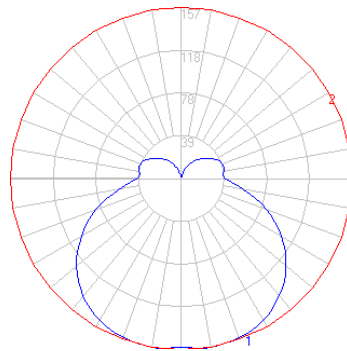


BEGA

Photometric Filename: 78634.IES

TEST: LI_78634
TEST LAB: BEGA
DATE: 11/7/2013
LUMINAIRE: 78 634
LAMP: 10.6W LED

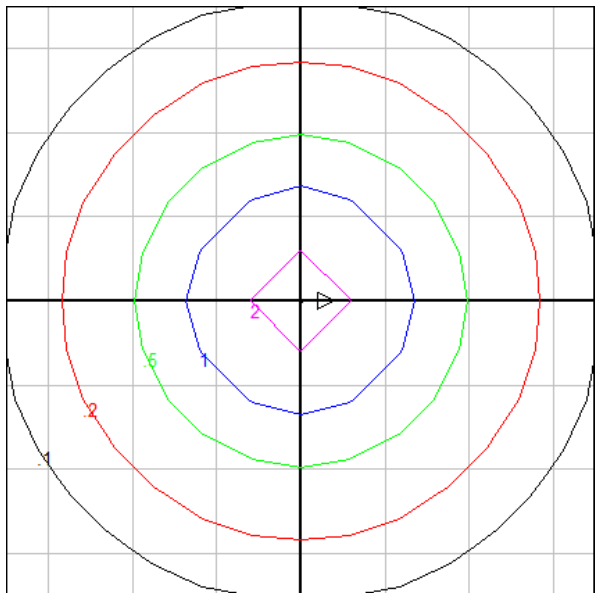


Characteristics

Lumens Per Lamp	N.A. (absolute)
Total Lamp Lumens	N.A. (absolute)
Luminaire Lumens	840
Total Luminaire Efficiency	N.A.
Luminaire Efficacy Rating (LER)	65
Total Luminaire Watts	13
Ballast Factor	1.00
CIE Type	Semi-Direct
Spacing Criterion (0-180)	1.46
Spacing Criterion (90-270)	1.46
Spacing Criterion (Diagonal)	1.58
Basic Luminous Shape	Circular w/ Sides
Luminous Length (0-180)	0.00 ft
Luminous Width (90-270)	0.80 ft (Diameter)
Luminous Height	0.28 ft

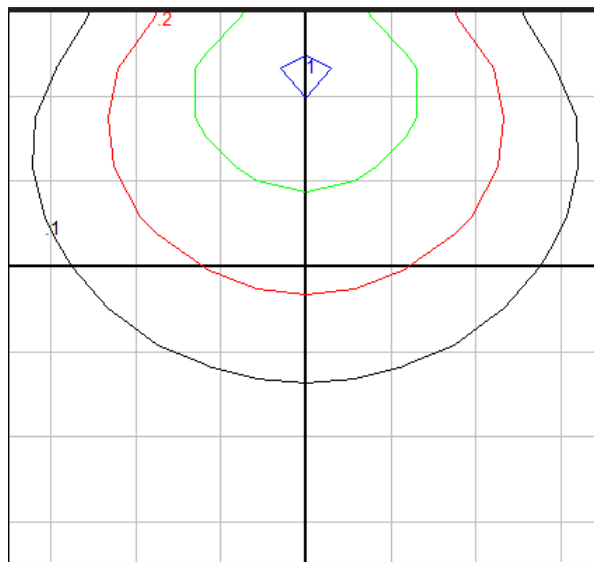
Zonal Lumen Summary

Zone	Lumens
0-10	14.92
10-20	44.31
20-30	70.80
30-40	91.24
40-50	102.87
50-60	103.97
60-70	94.04
70-80	74.86
80-90	52.72
90-100	42.59
100-110	42.29
110-120	37.43
120-130	28.97
130-140	19.97
140-150	11.85
150-160	5.50
160-170	1.56
170-180	0.15



Ceiling Mount

Mounting Height = 8 ft. Grid Spacing = 5 ft.



Wall Mount

Mounting Height = 8 ft. Grid Spacing = 5 ft.

In the interest of product improvement, BEGA reserves the right to make technical changes without notice.