

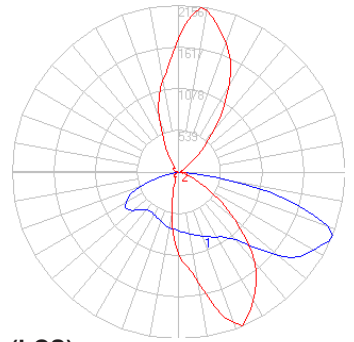
BEGA

Photometric Filename: 77855.IES

TEST: N/A
 TEST LAB: BEGA
 DATE: 02/26/2014
 LUMINAIRE: 77 855
 LAMP: 38W LED



All results in accordance with IESNA LM-63-1995



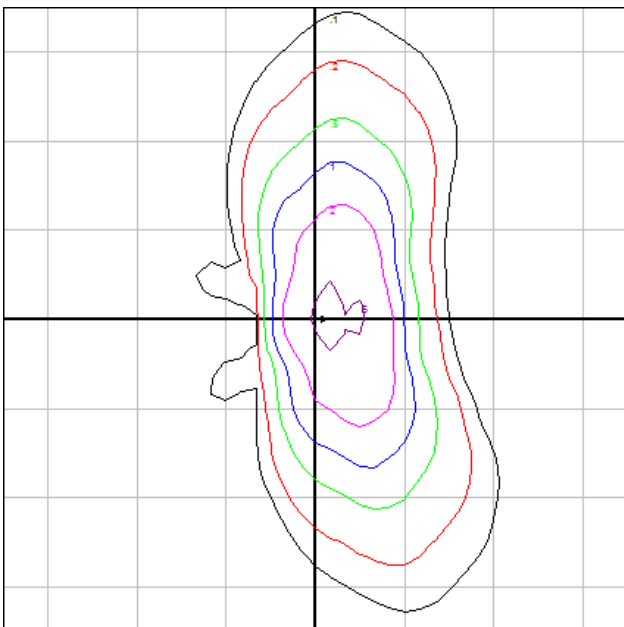
Characteristics

IES Classification	Type II
Longitudinal Classification	Short
Lumens Per Lamp	N.A. (absolute)
Total Lamp Lumens	N.A. (absolute)
Luminaire Lumens	3464
Downward Total Efficiency	N.A.
Total Luminaire Efficiency	N.A.
Luminaire Efficacy Rating (LER)	77
Total Luminaire Watts	45
Ballast Factor	1.00
Upward Waste Light Ratio	0.00
Max. Cd.	2156 (292.5H, 67.5V)
Max. Cd. (<90 Vert.)	2156 (292.5H, 67.5V)
Max. Cd. (At 90 Deg. Vert.)	.9 (0.0%Lum)
Max. Cd. (80 to <90 Deg. Vert.)	813.9 (23.5%Lum)
Cutoff Classification (deprecated)	N.A. (absolute)

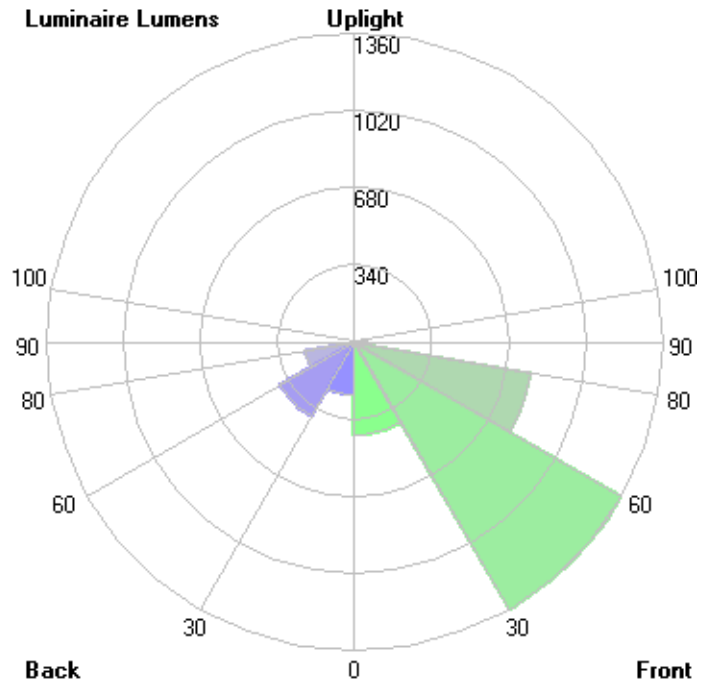
Lum. Classification System (LCS)

LCS Zone	Lumens	%Lamp	%Lum
FL (0-30)	410.1	N.A.	11.8
FM (30-60)	1359.8	N.A.	39.3
FH (60-80)	788.2	N.A.	22.8
FVH(80-90)	58.2	N.A.	1.7
BL (0-30)	236.0	N.A.	6.8
BM (30-60)	380.5	N.A.	11.0
BH (60-80)	220.3	N.A.	6.4
BVH(80-90)	11.3	N.A.	0.3
UL (90-100)	0.0	N.A.	0.0
UH (100-180)	0.0	N.A.	0.0
Total	3464.4	N.A.	100.0

BUG Rating B1-U0-G1



Mounting Height = 12 ft. Grid Spacing = 15 ft.



In the interest of product improvement, BEGA reserves the right to make technical changes without notice.