

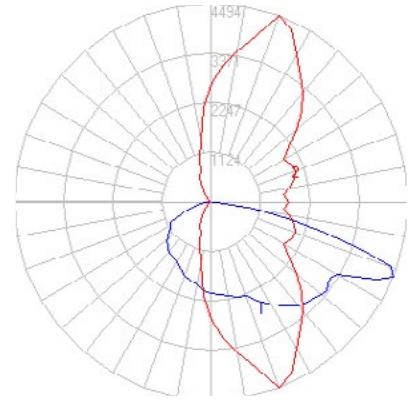
BEGA

Photometric Filename: 77759.ies

TEST: L071704009
TEST LAB: LIGHT LABORATORY, INC.
DATE: 7/18/2017
LUMINAIRE: 77 759
LAMP: 62.8W LED

All results in accordance with IESNA LM-79

*Report based on a single IES file, see below for twin head iso-footcandle template



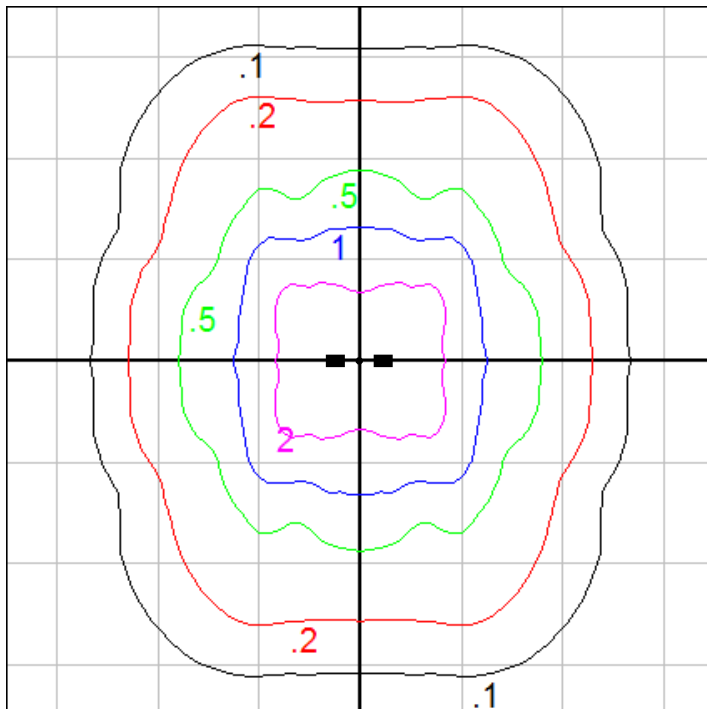
Characteristics

IES Classification	Type III
Longitudinal Classification	Medium
Lumens Per Lamp	N.A. (absolute)
Total Lamp Lumens	N.A. (absolute)
Luminaire Lumens	9357
Downward Total Efficiency	N.A.
Total Luminaire Efficiency	N.A.
Luminaire Efficacy Rating (LER)	123
Total Luminaire Watts	76.3
Ballast Factor	1.00
Upward Waste Light Ratio	0.00
Max. Cd.	4494 (70H, 67.5V)
Max. Cd. (<90 Vert.)	4494 (70H, 67.5V)
Max. Cd. (At 90 Deg. Vert.)	0 (0.0%Lum)
Max. Cd. (80 to <90 Deg. Vert.)	1316 (14.1%Lum)
Cutoff Classification (deprecated)	N.A. (absolute)

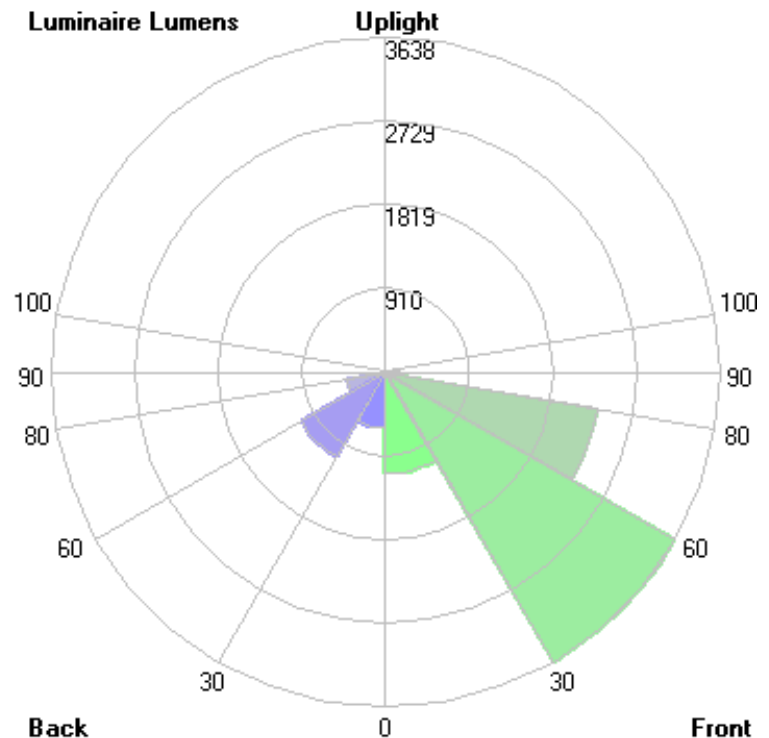
Lum. Classification System (LCS)

LCS Zone	Lumens	%Lamp	%Lum
FL (0-30)	1106.2	N.A.	11.8
FM (30-60)	3638.3	N.A.	38.9
FH (60-80)	2339.0	N.A.	25.0
FVH (80-90)	145.0	N.A.	1.5
BL (0-30)	610.8	N.A.	6.5
BM (30-60)	1060.3	N.A.	11.3
BH (60-80)	428.7	N.A.	4.6
BVH (80-90)	28.8	N.A.	0.3
UL (90-100)	0.0	N.A.	0.0
UH (100-180)	0.0	N.A.	0.0
Total	9357.1	N.A.	100.0

BUG Rating B2-U0-G2



Mounting Height = 29 ft. 8in (Pole - 2908SF)
Grid Spacing = 30 ft.



In the interest of product improvement, BEGA reserves the right to make technical changes without notice.

BEGA 1000 Bega Way, Carpinteria, CA 93013 (805)684-0533 Fax (805)566-9474 www.bega-us.com © Copyright BEGA-US 2019

8/7/2019

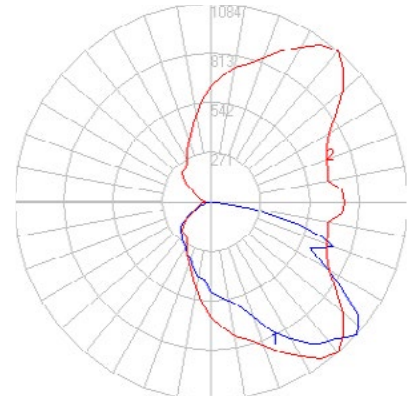
BEGA

Photometric Filename: 77759AMB.ies

TEST: L061914302
TEST LAB: LIGHT LABORATORY, INC.
DATE: 7/2/2019
LUMINAIRE: 77759 Amber
LAMP: (2) 70.4W LED

All results in accordance with IESNA LM-79

*Report based on a single IES file, see below for twin head iso-footcandle template



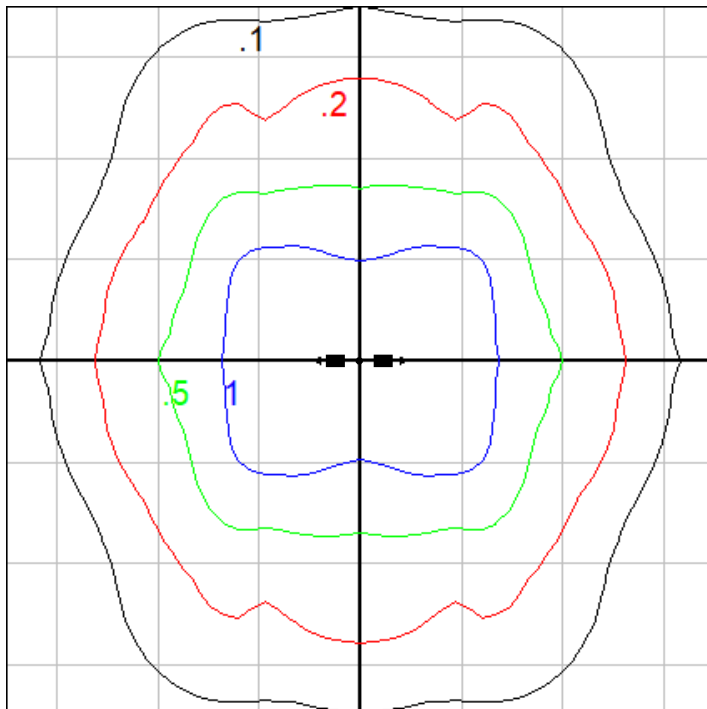
Characteristics

IES Classification	Type III
Longitudinal Classification	Very Short
Lumens Per Lamp	N.A. (absolute)
Total Lamp Lumens	N.A. (absolute)
Luminaire Lumens	2252
Downward Total Efficiency	N.A.
Total Luminaire Efficiency	N.A.
Luminaire Efficacy Rating (LER)	28
Total Luminaire Watts	81.59
Ballast Factor	1.00
Upward Waste Light Ratio	0.00
Max. Cd.	1084 (50H, 47.5V)
Max. Cd. (<90 Vert.)	1084 (50H, 47.5V)
Max. Cd. (At 90 Deg. Vert.)	0 (0.0%Lum)
Max. Cd. (80 to <90 Deg. Vert.)	239 (10.6%Lum)
Cutoff Classification (deprecated)	N.A. (absolute)

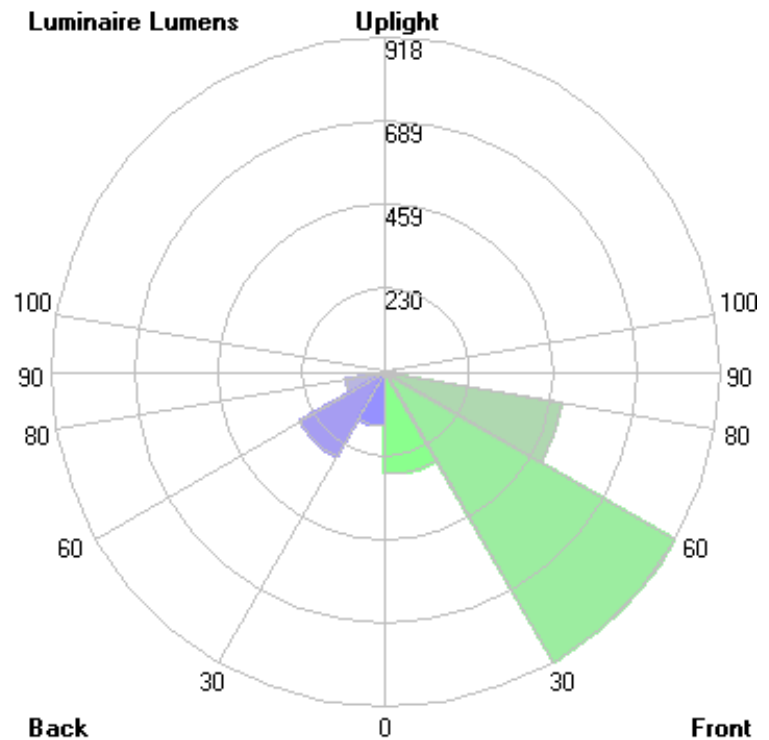
Lum. Classification System (LCS)

LCS Zone	Lumens	%Lamp	%Lum
FL (0-30)	279.8	N.A.	12.4
FM (30-60)	918.1	N.A.	40.8
FH (60-80)	491.6	N.A.	21.8
FVH(80-90)	27.8	N.A.	1.2
BL (0-30)	148.0	N.A.	6.6
BM (30-60)	269.7	N.A.	12.0
BH (60-80)	109.9	N.A.	4.9
BVH(80-90)	7.2	N.A.	0.3
UL (90-100)	0.0	N.A.	0.0
UH (100-180)	0.0	N.A.	0.0
Total	2252.1	N.A.	100.0

BUG Rating B1-U0-G1



Mounting Height = 19 ft. 8in
Grid Spacing = 15 ft.



In the interest of product improvement, BEGA reserves the right to make technical changes without notice.

BEGA 1000 Bega Way, Carpinteria, CA 93013 (805)684-0533 Fax (805)566-9474 www.bega-us.com © Copyright BEGA-US 2019

8/7/2019