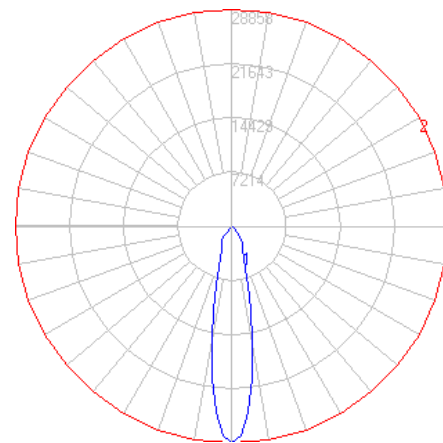


BEGA

Photometric Filename: 77739.ies

TEST: BE_77739
TEST LAB: BEGA
DATE: 11/20/2017
LUMINAIRE: 77 739
LAMP: 72.2W LED

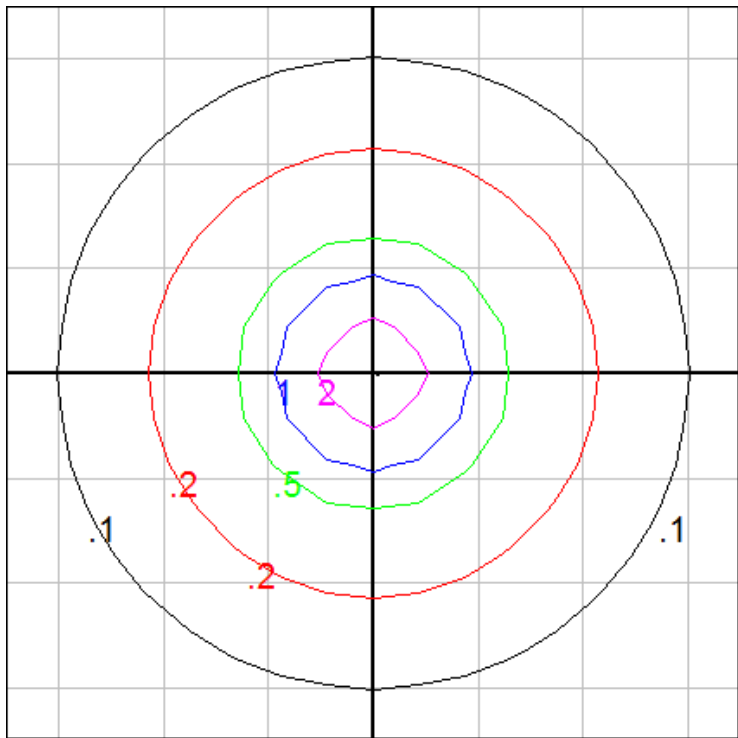


Characteristics

NEMA Type	4 H x 4 V
Maximum Candela	28857.9
Maximum Candela Angle	0 H 0 V
Horizontal Beam Angle (50%)	21.3
Vertical Beam Angle (50%)	21.3
Horizontal Field Angle (10%)	56.6
Vertical Field Angle (10%)	56.6
Lumens Per Lamp	N.A. (absolute)
Total Lamp Lumens	N.A. (absolute)
Beam Lumens	2225
Beam Efficiency	N.A.
Field Lumens	5645
Field Efficiency	N.A.
Spill Lumens	1946
Luminaire Lumens	7592
Total Efficiency	N.A.
Total Luminaire Watts	82

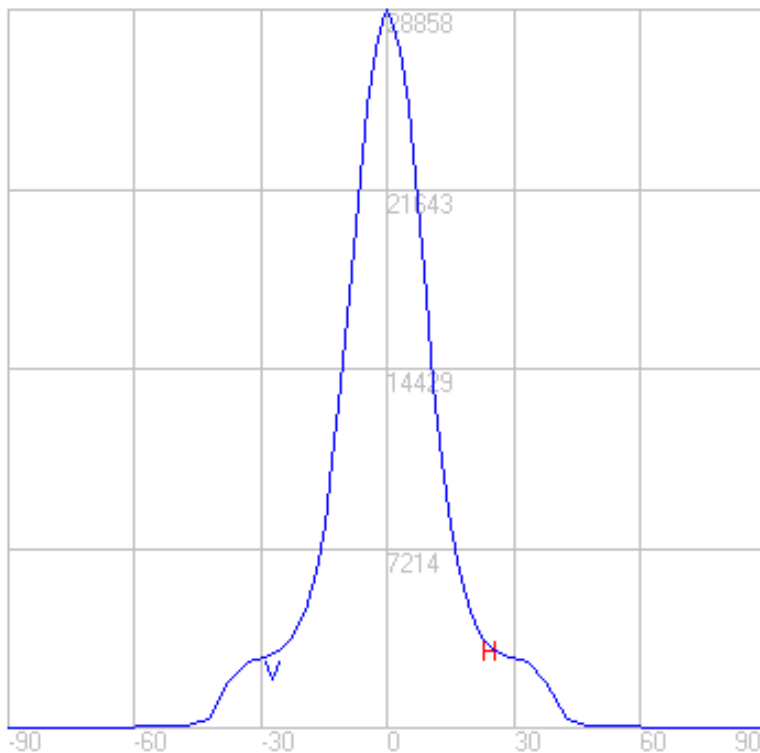
Zonal Lumen Summary

Zone	Lumens
0-10	2064.95
10-20	2342.97
20-30	1512.48
30-40	1379.93
40-50	212.32
50-60	65.38
60-70	19.70
70-80	1.58
80-90	0.59
90-100	0.00
100-110	0.00
110-120	0.00
120-130	0.00
130-140	0.00
140-150	0.00
150-160	0.00
160-170	0.00
170-180	0.00



Setback = 100 ft.

Grid Spacing = 25 ft.



In the interest of product improvement, BEGA reserves the right to make technical changes without notice.

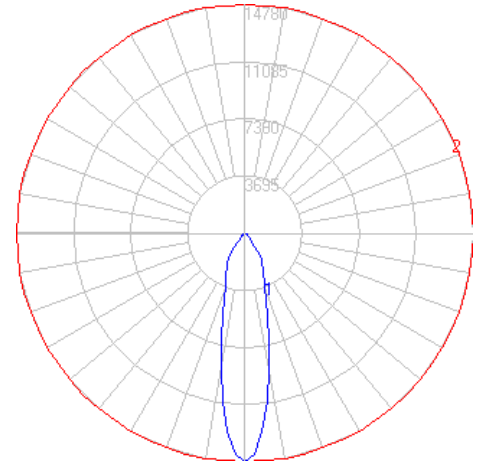
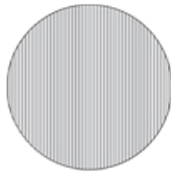
BEGA 1000 Bega Way, Carpinteria, CA 93013 (805)684-0533 Fax (805)566-9474 www.bega-us.com © Copyright BEGA-US 2018

3/19/2018

BEGA

Photometric Filename: 77739_70065.ies

TEST: BE_77739_70065
TEST LAB: BEGA
DATE: 11/20/2017
LUMINAIRE: 77 739 + 70 065
LAMP: 72.2W LED

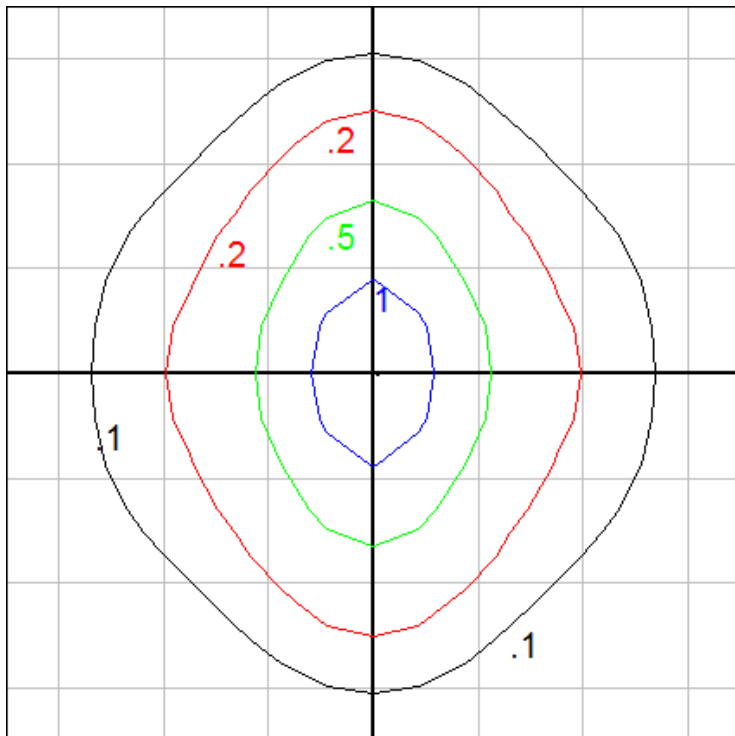


Characteristics

NEMA Type	5 H x 5 V
Maximum Candela	14780.3
Maximum Candela Angle	0 H 0 V
Horizontal Beam Angle (50%)	39.4
Vertical Beam Angle (50%)	24.1
Horizontal Field Angle (10%)	81.5
Vertical Field Angle (10%)	70.5
Lumens Per Lamp	N.A. (absolute)
Total Lamp Lumens	N.A. (absolute)
Beam Lumens	2316
Beam Efficiency	N.A.
Field Lumens	5611
Field Efficiency	N.A.
Spill Lumens	1179
Luminaire Lumens	6790
Total Efficiency	N.A.
Total Luminaire Watts	82

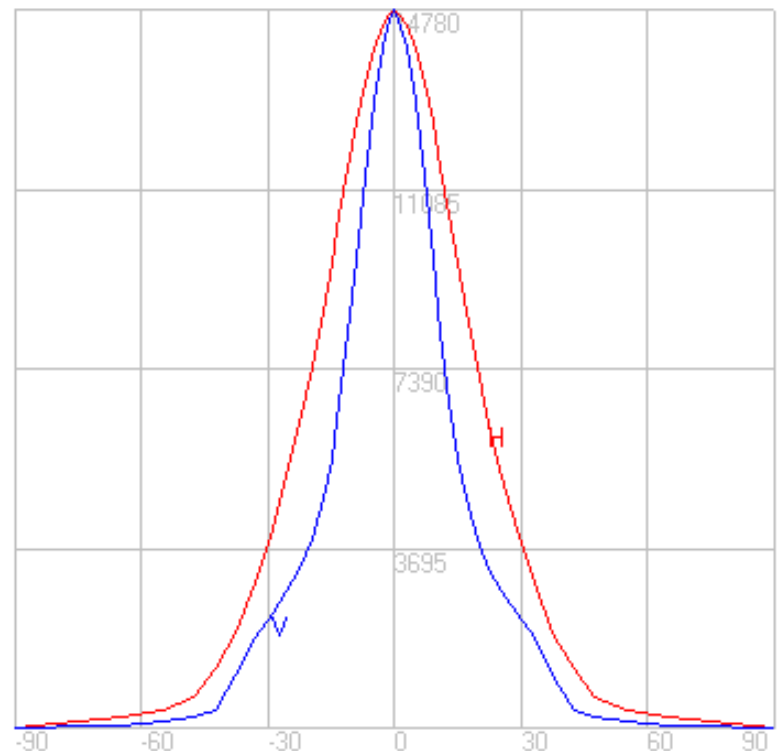
Zonal Lumen Summary

Zone	Lumens
0-10	1184.97
10-20	2023.4
20-30	1645.6
30-40	1092.46
40-50	464.12
50-60	197.71
60-70	105.09
70-80	58.43
80-90	14.97
90-100	0.00
100-110	0.00
110-120	0.00
120-130	0.00
130-140	0.00
140-150	0.00
150-160	0.00
160-170	0.00
170-180	0.00



Setback = 100 ft.

Grid Spacing = 25 ft.



In the interest of product improvement, BEGA reserves the right to make technical changes without notice.

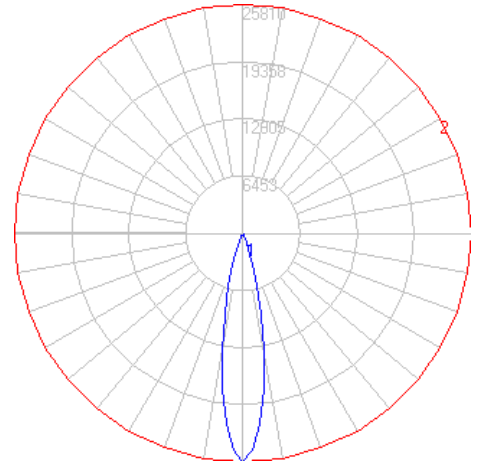
BEGA 1000 Bega Way, Carpinteria, CA 93013 (805)684-0533 Fax (805)566-9474 www.bega-us.com © Copyright BEGA-US 2018

3/19/2018

BEGA

Photometric Filename: 77739_70775.ies

TEST: BE_77739_70775
 TEST LAB: BEGA
 DATE: 11/6/2014
 LUMINAIRE: 77 739 + 70 775
 LAMP: 72.2W LED

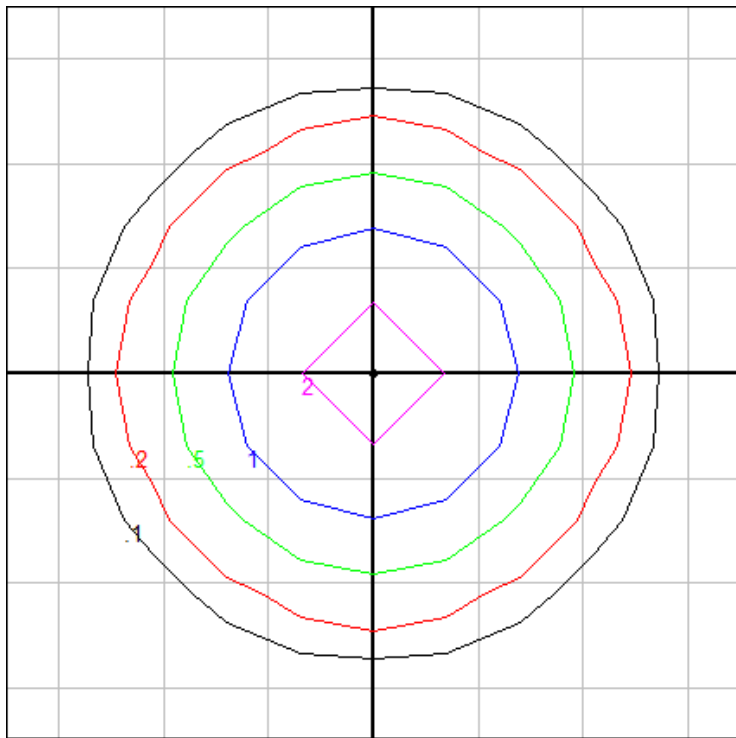


Characteristics

NEMA Type	3 H x 3 V
Maximum Candela	25810.2
Maximum Candela Angle	0 H 0 V
Horizontal Beam Angle (50%)	20.7
Vertical Beam Angle (50%)	20.7
Horizontal Field Angle (10%)	38.4
Vertical Field Angle (10%)	38.4
Lumens Per Lamp	N.A. (absolute)
Total Lamp Lumens	N.A. (absolute)
Beam Lumens	1939
Beam Efficiency	N.A.
Field Lumens	3490
Field Efficiency	N.A.
Spill Lumens	472
Luminaire Lumens	3962
Total Efficiency	N.A.
Total Luminaire Watts	82
Ballast Factor	1.00

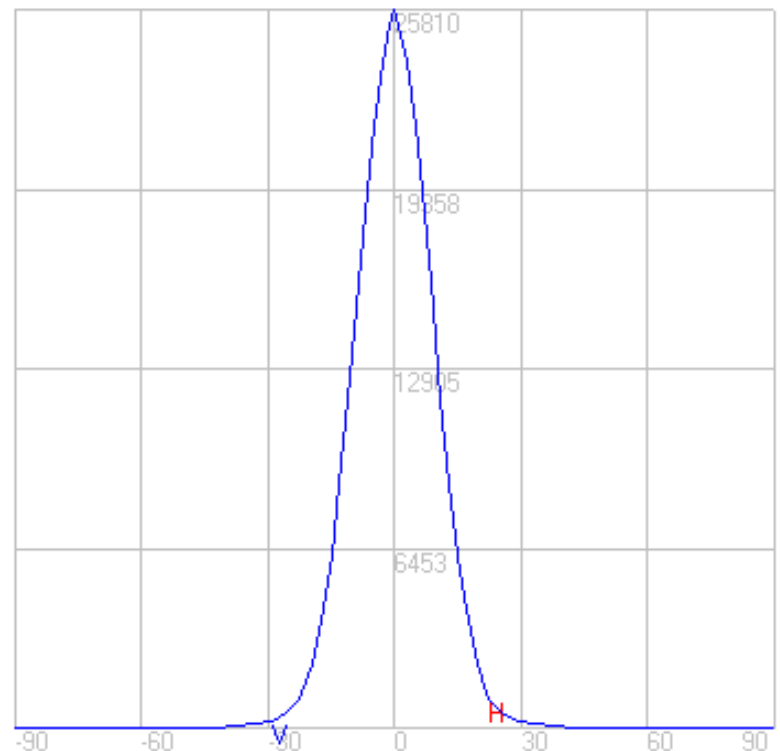
Zonal Lumen Summary

Zone	Lumens
0-10	1802.3
10-20	1759.21
20-30	328.90
30-40	64.70
40-50	13.95
50-60	4.51
60-70	1.97
70-80	0.55
80-90	0.01
90-100	0.00
100-110	0.00
110-120	0.00
120-130	0.00
130-140	0.00
140-150	0.00
150-160	0.00
160-170	0.00
170-180	0.00



Setback = 100 ft.

Grid Spacing = 15 ft.



In the interest of product improvement, BEGA reserves the right to make technical changes without notice.

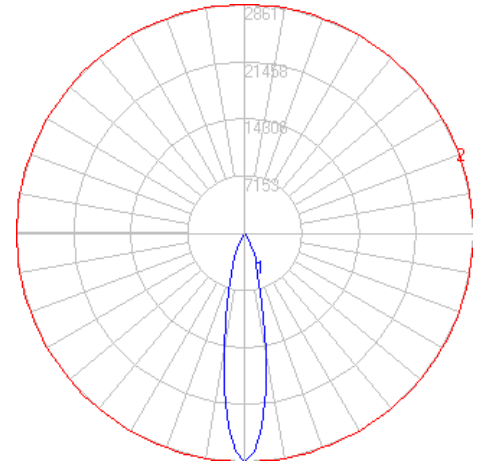
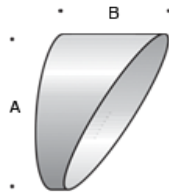
BEGA 1000 Bega Way, Carpinteria, CA 93013 (805)684-0533 Fax (805)566-9474 www.bega-us.com © Copyright BEGA-US 2018

3/19/2018

BEGA

Photometric Filename: 77739_70758.ies

TEST: BE_77739_70758
 TEST LAB: BEGA
 DATE: 11/6/2014
 LUMINAIRE: 77 739 + 70 758
 LAMP: 72.2W LED

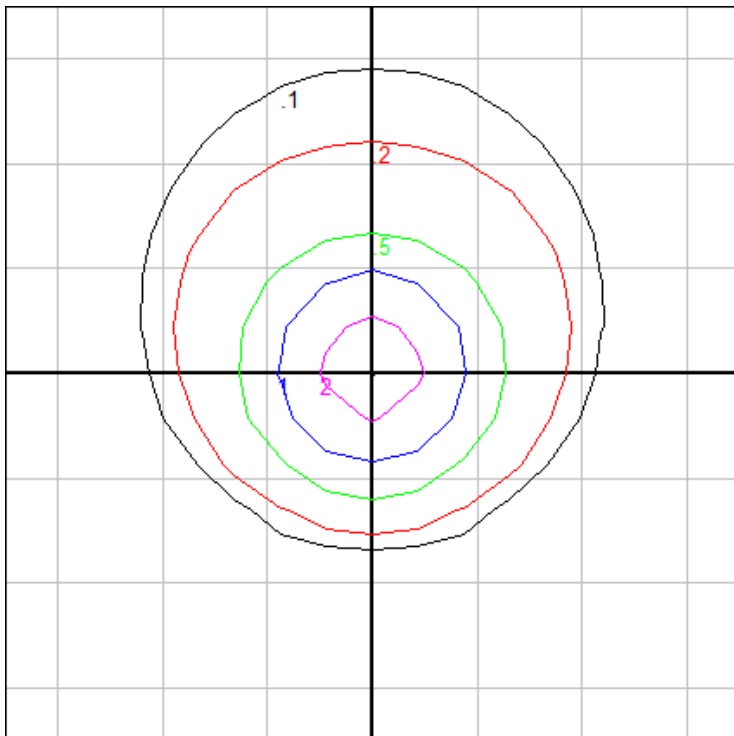


Characteristics

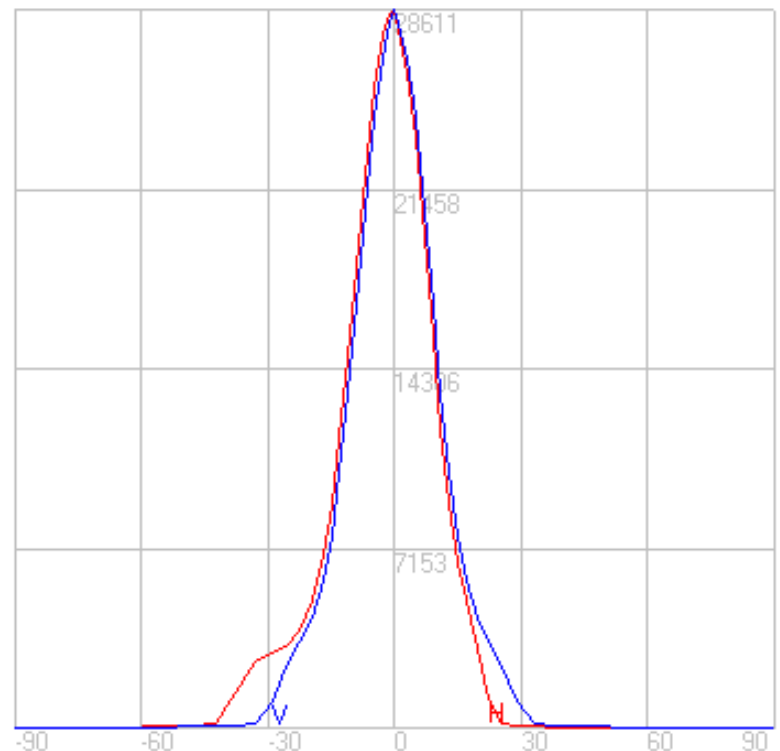
NEMA Type	4 H x 4 V
Maximum Candela	28611
Maximum Candela Angle	0 H 0 V
Horizontal Beam Angle (50%)	21.0
Vertical Beam Angle (50%)	20.9
Horizontal Field Angle (10%)	50.4
Vertical Field Angle (10%)	48.7
Lumens Per Lamp	N.A. (absolute)
Total Lamp Lumens	N.A. (absolute)
Beam Lumens	2131
Beam Efficiency	N.A.
Field Lumens	4954
Field Efficiency	N.A.
Spill Lumens	845
Luminaire Lumens	5799
Total Efficiency	N.A.
Total Luminaire Watts	82
Ballast Factor	1.00

Zonal Lumen Summary

Zone	Lumens
0-10	2021.07
10-20	2230.52
20-30	1037.69
30-40	391.40
40-50	63.08
50-60	41.29
60-70	15.99
70-80	5.67
80-90	2.15
90-100	0.12
100-110	0.00
110-120	0.00
120-130	0.00
130-140	0.00
140-150	0.00
150-160	0.00
160-170	0.00
170-180	0.00



Setback = 100 ft. Grid Spacing = 25 ft.



In the interest of product improvement, BEGA reserves the right to make technical changes without notice.

BEGA 1000 Bega Way, Carpinteria, CA 93013 (805)684-0533 Fax (805)566-9474 www.bega-us.com © Copyright BEGA-US 2018

3/19/2018