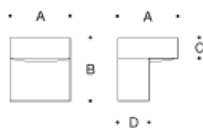


Tools Required:

3mm hex key
4mm hex key
1/4" masonry/concrete drill bit
Drill



Dimensions

A: 7-7/8 "
B: 8-3/8 "
C: 2-3/8 "
D: 5 "

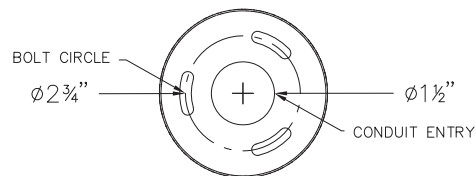


Protection Class: IP65

Weight: 9.7 lbs.

Notice to Installer for 77 735:

1. See page 2 for specific product safety warnings.
2. Fixture may be damaged if connected to conduit systems that contain water - Article 300-5G of the National Electric Code requires that "Conduits or raceways through which moisture may contact energized live parts shall be sealed or plugged at either or both ends."
3. It is recommended that when installing in planting areas the base of the bollard be slightly elevated to avoid prolonged submerging during heavy rains.
4. Wet location listing does not imply suitability for exposure to standing water for long periods of time.
5. 79 824 anchorage kit is installed AFTER concrete pouring. There is no anchorage installation required during concrete pouring.
6. LED and LED driver integral, provided inside luminaire housing.



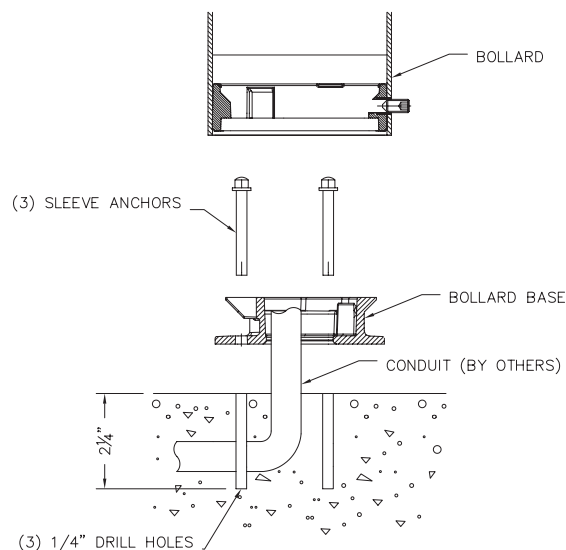
ANCHOR KIT 79 824

79 824 anchorage installation:

1. Provide means to bring supply wiring to the bollard in accordance with local code and pour concrete for finished grade. The bollard base has a 1 1/2" conduit hole for conduit entry.
2. Loosen set screw at bollard base and remove base plate.
3. After establishing finished grade, mark the location of the (3) anchorage drill holes using the bollard base of the fixture as a template.
4. Drill (3) 1/4" holes in concrete at the marked locations.
5. Feed supply wires up through bollard base and conduit, if necessary.
6. Align bollard base holes with drill holes.
7. Drive the sleeve anchors through the bollard base and into the drilled holes until seated flush.

77 735 - installation:

1. Make supply wiring and luminaire wiring connections in the luminaire base:
MAIN VOLTAGE SUPPLY WIRE TO BLACK LUMINAIRE WIRE
NEUTRAL (COMMON) SUPPLY WIRE TO WHITE LUMINAIRE WIRE
GREEN GROUND WIRE TO GREEN LUMINAIRE WIRE
Dimming (if applicable):
DIMMING CONTROL WIRE (+) TO POSITIVE LUMINAIRE DIM CONTROL WIRE
DIMMING CONTROL WIRE (-) TO NEGATIVE LUMINAIRE DIM CONTROL WIRE
2. Mount bollard over mounting plate and tighten 4mm set screw at base to secure.



Relamping/Maintenance

No relamping required.

Accessories

Please refer to the appropriate accessory installation sheet for further instruction when applicable.

Replacement Parts

Description	Part No
Lens	112905.2
Housing gasket	831114
Driver (120-277V)	75983-02
LED Module (4000K)	(x3) LED-0233/840
LED Module (3000K)	(x3) LED-0233/830

Lamp: 12.3W LED Module

Product Safety Warnings:

THIS PRODUCT MUST BE INSTALLED IN ACCORDANCE WITH THE APPLICABLE INSTALLATION CODE BY A PERSON FAMILIAR WITH THE CONSTRUCTION AND OPERATION OF THE PRODUCT AND THE HAZARDS INVOLVED. SUITABLE FOR WET LOCATIONS.

MIN 90°C SUPPLY CONDUCTORS.

CE PRODUIT DOIT ÊTRE INSTALLÉ SELON LE CODE D'INSTALLATION PERTINENT, PAR UNE PERSONNE QUI CONNAÎT BIEN LE PRODUIT ET SON FONCTIONNEMENT AINSI QUE LES RISQUES INHÉRENTS. CONVIENT AUX EMPLACEMENTS MOUILLÉS.

LES FILS D'ALIMENTATION 90°C MIN.
