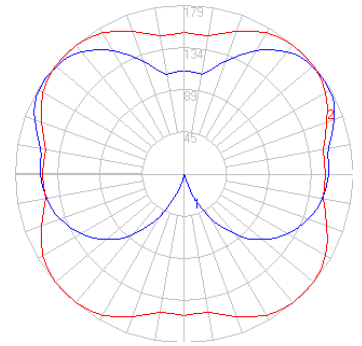


BEGA

Photometric Filename: 77334.IES

TEST: NA
TEST LAB: BEGA
DATE: 08/23/2016
LUMINAIRE: 77 334
LAMP: 19W LED



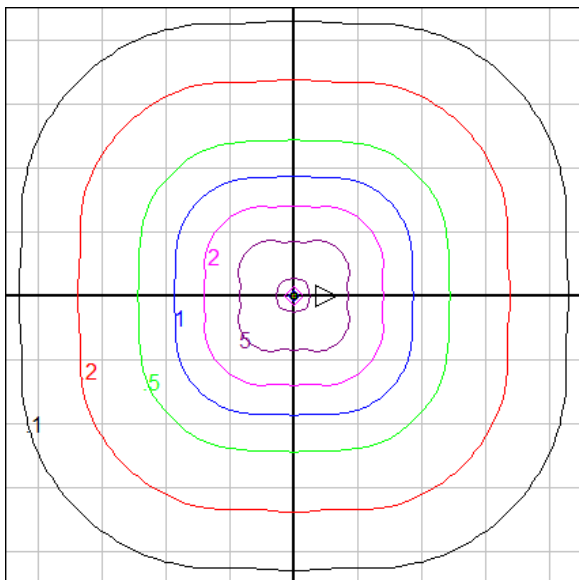
Characteristics

IES Classification	Type VS
Longitudinal Classification	Very Long
Lumens Per Lamp	N.A. (absolute)
Total Lamp Lumens	N.A. (absolute)
Luminaire Lumens	1535
Downward Total Efficiency	N.A.
Total Luminaire Efficiency	N.A.
Luminaire Efficacy Rating (LER)	67
Total Luminaire Watts	23
Ballast Factor	1.00
Upward Waste Light Ratio	0.60
Max. Cd.	178.6 (45H, 125V)
Max. Cd. (<90 Vert.)	151.4 (45H, 87.5V)
Max. Cd. (At 90 Deg. Vert.)	152.5 (9.9%Lum)
Max. Cd. (80 to <90 Deg. Vert.)	151.4 (9.9%Lum)
Cutoff Classification (deprecated)	N.A. (absolute)

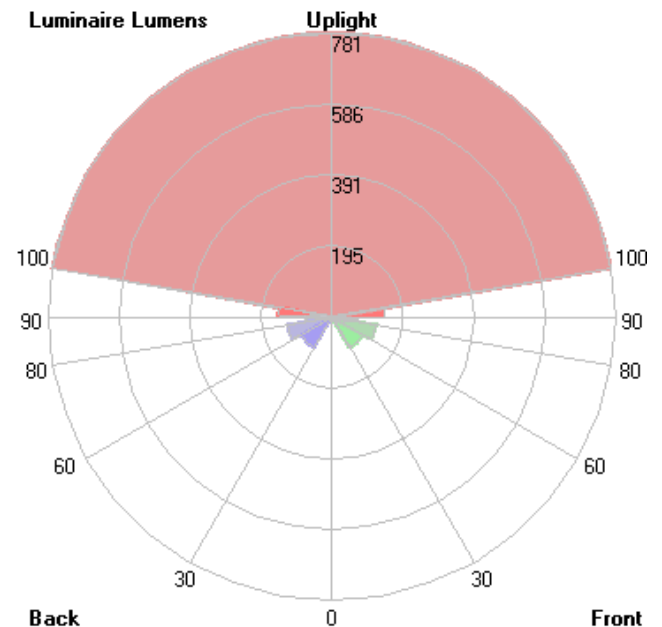
Lum. Classification System (LCS)

LCS Zone	Lumens	%Lamp	%Lum
FL (0-30)	9.6	N.A.	0.6
FM (30-60)	97.7	N.A.	6.4
FH (60-80)	124.6	N.A.	8.1
FVH(80-90)	71.7	N.A.	4.7
BL (0-30)	9.6	N.A.	0.6
BM (30-60)	97.7	N.A.	6.4
BH (60-80)	124.6	N.A.	8.1
BVH(80-90)	71.7	N.A.	4.7
UL (90-100)	146.2	N.A.	9.5
UH (100-180)	781.2	N.A.	50.9
Total	1534.6	N.A.	100.0

BUG Rating B1-U4-G1



Mounting Height = 2 ft. Grid Spacing = 3 ft.



In the interest of product improvement, BEGA reserves the right to make technical changes without notice.