

Drive-over in-grade floodlights for high pressure loads - adjustable

Outer housing: Constructed of high gauge, high tensile strength stainless steel.

Enclosure: Housing constructed of heavy gauge, high tensile strength stainless steel. Trim ring is heavy gauge, machined stainless steel secured to housing with captive, stainless steel fasteners threaded into stainless steel inserts. Tempered clear safety glass is 1/2" thick and machined flush to trim ring. Reflector is pure anodized aluminum with integrated ring louver. Weather tight operation achieved through the use of a molded, high temperature silicone gasket.

Electrical: 17.2.0W LED luminaire, 21.0 total system watts, -30°C start temperature. Integral 120V through 277V electronic LED driver, 0-10V dimming. LED module(s) are available from factory for easy replacement. Standard LED color temperature is 4000K with a >90 CRI. Available in 3000K (>90 CRI); add suffix K3 to order. Pre-wired with nine (9) feet of waterproof cable, cable clamp, and waterproof cable gland entry into housing. A separate waterproof wiring box for supply power must be provided (by others).

Note: LEDs supplied with luminaire. Due to the dynamic nature of LED technology, LED luminaire data on this sheet is subject to change at the discretion of BEGA-US. For the most current technical data, please refer to www.bega-us.com.

Finish: Machined #4 stainless steel. Custom colors are not available.

Optics: Adjustable 0-30° swivel-mounted in 3° steps and ± 180° infinitely rotatable.

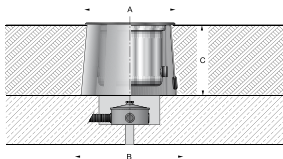
Temperature caution: The column 'T' in this chart indicates the temperature in degrees Celcius which is reached on the center of the glass surface during operation. Surface temperatures are for exterior applications, for interior applications add 10° C to the temperatures shown.

Note: These luminaires are designed to bear pressure loads up to 4400 lbs. from vehicles with pneumatic tires. The luminaires must not be used for traffic lanes where they are subject to horizontal pressure from vehicles braking, accelerating and changing direction.

CSA certified to U.S. and Canadian standards for wet locations. Protection class IP68.

Weight: 17.9 lbs.

Luminaire Lumens: 1404



Adjustable floodlights · clear safety glass

Lamp	β	T	A	B	C
77 148 29.0W LED	15°	35°	13	15 1/2	10

Diffuser lenses  wide beam  flat beam b=Beam angle

Accessories



Type:

BEGA Product:

Project:

Voltage:

Color:

Options:

Modified:

