

Drive-over surface-mounted luminaires to illuminate ground surfaces

Outer Housing: Constructed of high tensile strength, copper free die-cast aluminum alloy with two (2) light openings. Slotted, stainless steel base plate allows top casting to rotate to any orientation. Die castings are marine grade, copper free ($\leq 0.3\%$ copper content) A360.0 aluminum alloy.

Enclosure: One piece heavy duty die cast aluminum body with clear borosilicate lens. Reflector of pure anodized aluminum. All aluminum used in the construction is marine grade and copper free. All fasteners are stainless steel. Two (2) molded, one piece, high temperature silicone gaskets on top and bottom of the lens.

Electrical: 6.7W LED luminaire, 9.3 total system watts, -40°C start temperature. Integral 120V through 277V electronic LED driver, 0-10V dimming. LED module(s) are available from factory for easy replacement. Standard LED color temperature is 3000K with an 85 CRI. Available in 4000K (85 CRI); add suffix K4 to order.

Note: LEDs supplied with luminaire. Due to the dynamic nature of LED technology, LED luminaire data on this sheet is subject to change at the discretion of BEGA-US. For the most current technical data, please refer to www.bega-us.com.

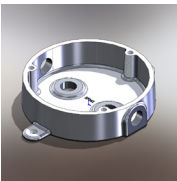
Mounting: Luminaire mounts directly to ground-mounted weathertight wiring box, by BEGA. Slotted holes in stainless steel luminaire base plate allow for up to 50° of base plate rotation. BEGA wiring box suitable for 1/2" side or bottom conduit entry.

Note: The luminaires must not be installed in traffic lanes where they are subject to horizontal pressure from vehicles braking, accelerating and changing direction. A foundation must be supplied by the contractor designed to bear the static pressure loads from vehicles with pneumatic tires. The luminaires are designed to withstand a static load of 2,200 lbs.

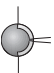
Finish: All BEGA standard finishes are polyester powder coat with minimum 3 mil thickness. Available in standard BEGA Black (BLK). Custom colors not available.

CSA certified to U.S. and Canadian standards for wet locations. Protection class IP67

Weight: 6.4 lbs.



The ground-mounted luminaires mount directly to BEGA in-ground wiring box.

	180° port		
	Lamps	A	B
	77 089	6.7W LED	10 1/2 2 1/4

Type:
BEGA Product:
Project:
Voltage:
Color:
Options:
Modified:

