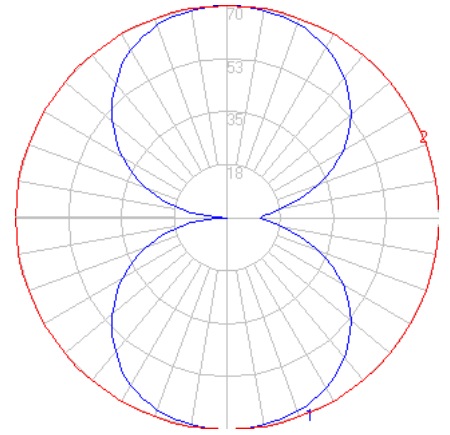
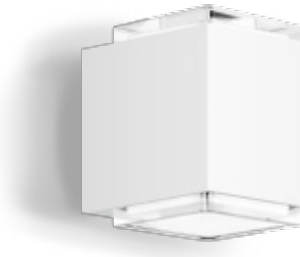


BEGA

Photometric Filename: 50063.IES

TEST: LI_50063
 TEST LAB: BEGA
 DATE: 3/16/2016
 LUMINAIRE: 50 063.X
 LAMP: 7.6W LED

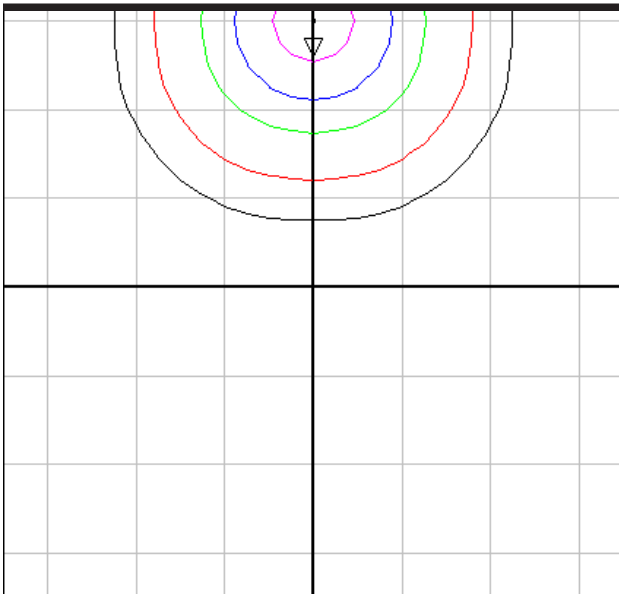


Characteristics

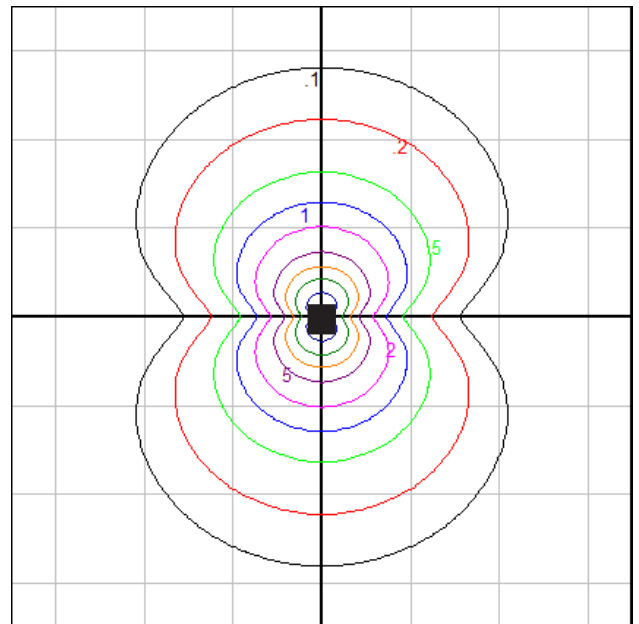
Lumens Per Lamp	N.A. (absolute)
Total Lamp Lumens	N.A. (absolute)
Luminaire Lumens	542
Total Luminaire Efficiency	N.A.
Luminaire Efficacy Rating (LER)	54
Total Luminaire Watts	10
Ballast Factor	1.00
CIE Type	General Diffuse
Spacing Criterion (0-180)	N.A.
Spacing Criterion (90-270)	N.A.
Spacing Criterion (Diagonal)	N.A.
Basic Luminous Shape	Rectangular w/Sides
Luminous Length (0-180)	0.27 ft
Luminous Width (90-270)	0.27 ft
Luminous Height	0.08 ft

Zonal Lumen Summary

Zone	Lumens
0-10	6.66
10-20	19.47
20-30	30.75
30-40	39.34
40-50	44.05
50-60	44.13
60-70	39.16
70-80	28.96
80-90	18.53
90-100	18.53
100-110	28.96
110-120	39.16
120-130	44.13
130-140	44.05
140-150	39.34
150-160	30.75
160-170	19.47
170-180	6.66



Mounting Height = 5 ft. Grid Spacing = 5 ft.
Isofootcandle grid on floor



Grid Spacing = 5 ft.
Isofootcandle grid on wall

In the interest of product improvement, BEGA reserves the right to make technical changes without notice.