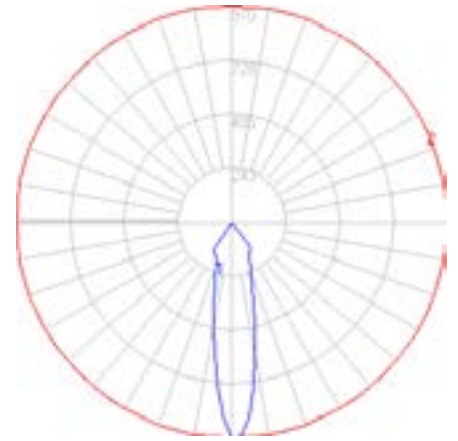


BEGA

Photometric Filename: 33580.IES

TEST: BE_33580
 TEST LAB: BEGA
 DATE: 4/22/2016
 LUMINAIRE: 33 580
 LAMP: 4.0W LED



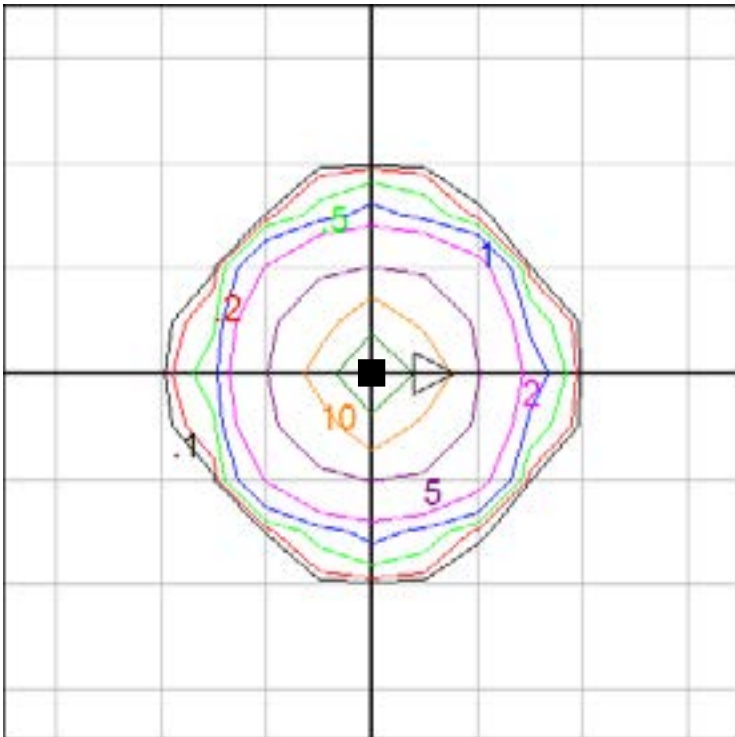
Characteristics

NEMA Type	5 H x 5 V
Maximum Candela	970.3
Maximum Candela Angle	0 H 0 V
Horizontal Beam Angle (50%)	23.1
Vertical Beam Angle (50%)	22.4
Horizontal Field Angle (10%)	70.2
Vertical Field Angle (10%)	70.2
Lumens Per Lamp	N.A. (absolute)
Total Lamp Lumens	N.A. (absolute)
Beam Lumens	82
Beam Efficiency	N.A.
Field Lumens	294
Field Efficiency	N.A.
Spill Lumens	25
Luminaire Lumens	318
Total Efficiency	N.A.
Total Luminaire Watts	6
Ballast Factor	1.00

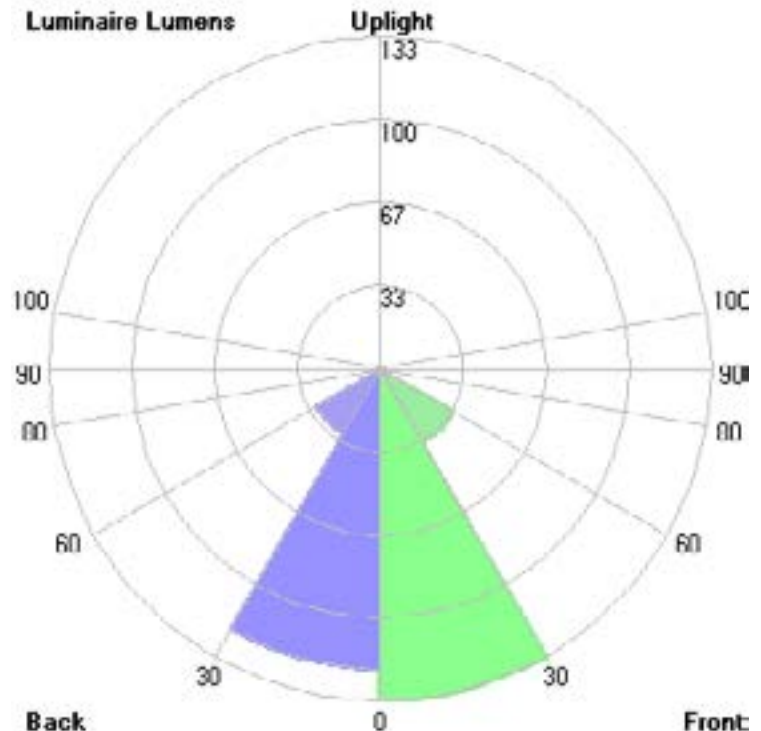
Lum. Classification System (LCS)

<u>LCS Zone</u>	<u>Lumens</u>	<u>%Lamp</u>	<u>%Lum</u>
FL (0-30)	133.3	N.A.	41.9
FM (30-60)	34.3	N.A.	10.8
FH (60-80)	0.1	N.A.	0.0
FVH (80-90)	< 0.05	N.A.	0.0
BL (0-30)	120.4	N.A.	37.8
BM (30-60)	30.1	N.A.	9.4
BH (60-80)	0.1	N.A.	0.0
BVH (80-90)	< 0.05	N.A.	0.0
UL (90-100)	0.0	N.A.	0.0
UH (100-180)	0.0	N.A.	0.0
Total	318.3	N.A.	100.0

BUG Rating B1-U0-G0



Wall mount fixture - isofootcandle grid on floor
 Mounting Height = 5 ft. Grid Spacing = 2.5 ft.

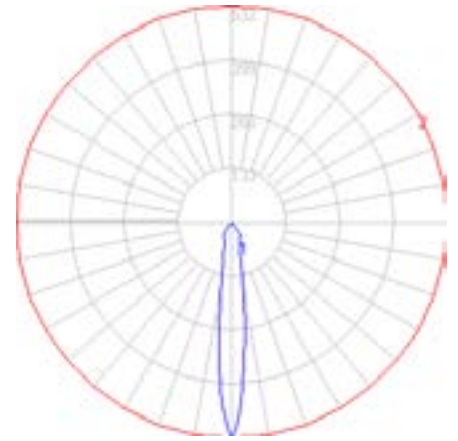


In the interest of product improvement, BEGA reserves the right to make technical changes without notice.

BEGA

Photometric Filename: 33580AMB.IES

TEST: L121804107
 TEST LAB: Light Laboratory Inc.
 DATE: 1/8/2019
 LUMINAIRE: 33 580 Amber
 LAMP: 2.1W LED



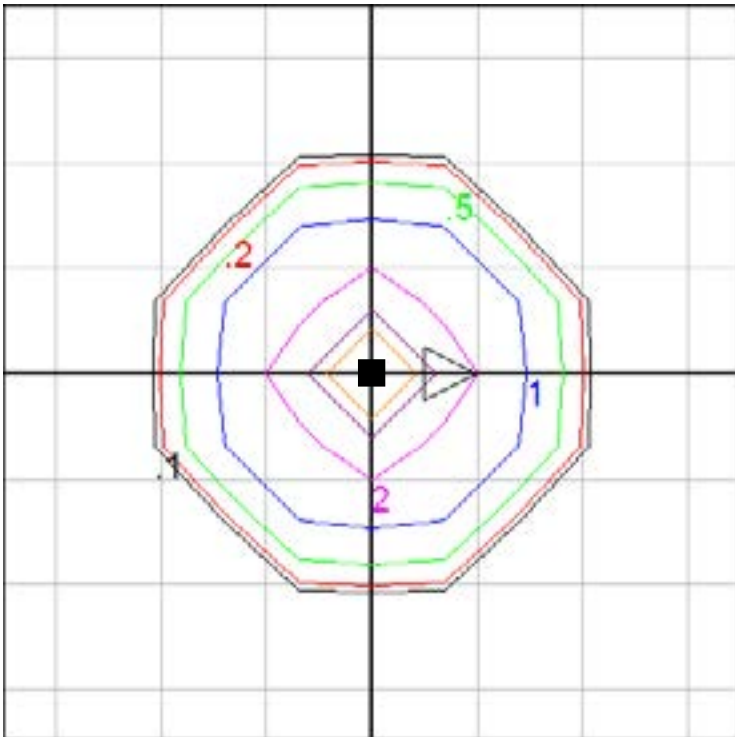
Characteristics

NEMA Type	3 H x 3 V
Maximum Candela	532.29
Maximum Candela Angle	0 H 0 V
Horizontal Beam Angle (50%)	14.0
Vertical Beam Angle (50%)	14.0
Horizontal Field Angle (10%)	41.3
Vertical Field Angle (10%)	41.3
Lumens Per Lamp	N.A. (absolute)
Total Lamp Lumens	N.A. (absolute)
Beam Lumens	17
Beam Efficiency	N.A.
Field Lumens	52
Field Efficiency	N.A.
Spill Lumens	38
Luminaire Lumens	90
Total Efficiency	N.A.
Total Luminaire Watts	8.77
Ballast Factor	1.00

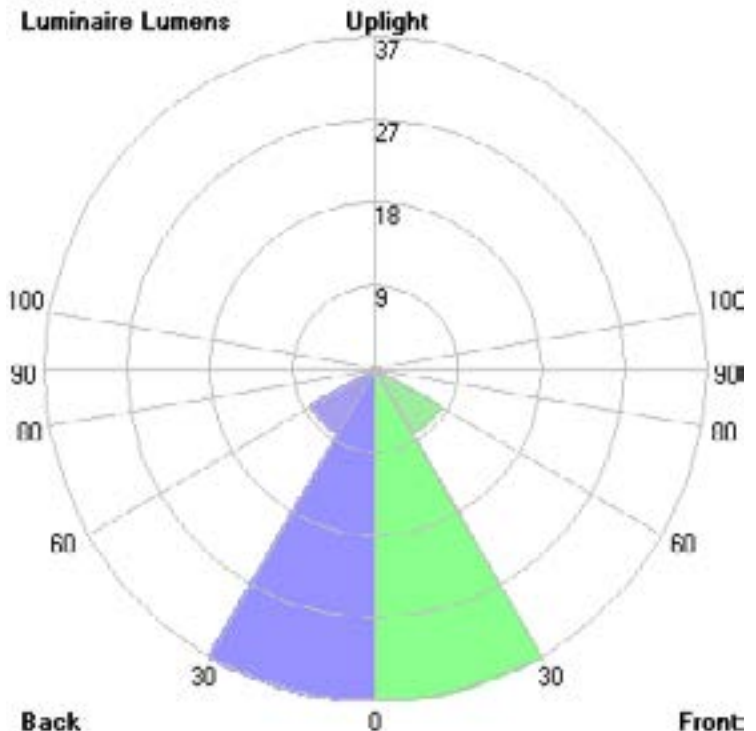
Lum. Classification System (LCS)

LCS Zone	Lumens	%Lamp	%Lum
FL (0-30)	36.5	N.A.	40.7
FM (30-60)	8.2	N.A.	9.2
FH (60-80)	0.2	N.A.	0.2
FVH(80-90)	< 0.05	N.A.	0.0
BL (0-30)	36.5	N.A.	40.7
BM (30-60)	8.2	N.A.	9.2
BH (60-80)	0.2	N.A.	0.2
BVH(80-90)	< 0.05	N.A.	0.0
UL (90-100)	0.0	N.A.	0.0
UH (100-180)	0.0	N.A.	0.0
Total	89.8	N.A.	100.0

BUG Rating B0-U0-G0



Wall mount fixture - isofootcandle grid on floor
 Mounting Height = 5 ft. Grid Spacing = 2 ft.



In the interest of product improvement, BEGA reserves the right to make technical changes without notice.