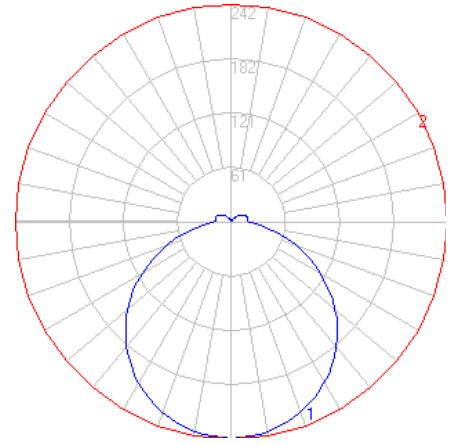


BEGA

Photometric Filename: 33504.ies

TEST: BE_33504
TEST LAB: BEGA
DATE: 8/3/2018
LUMINAIRE: 33 504
LAMP: 10.5W LED

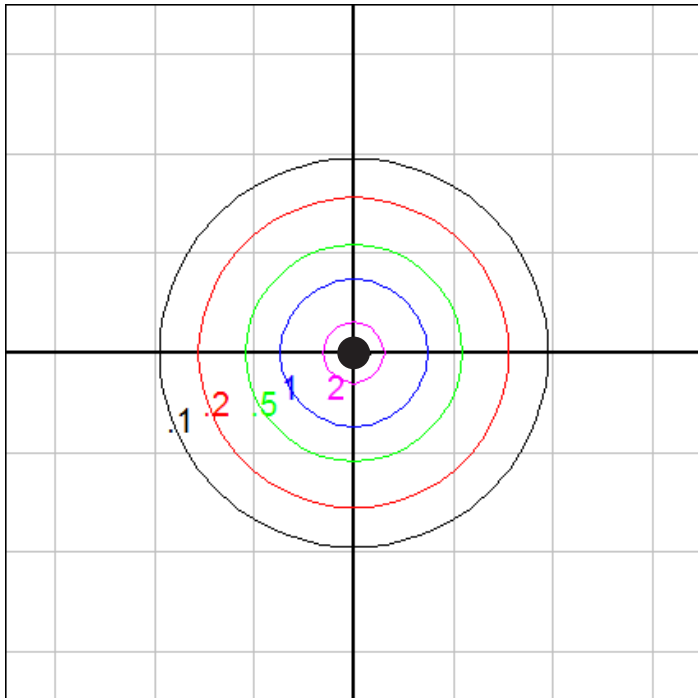


Characteristics

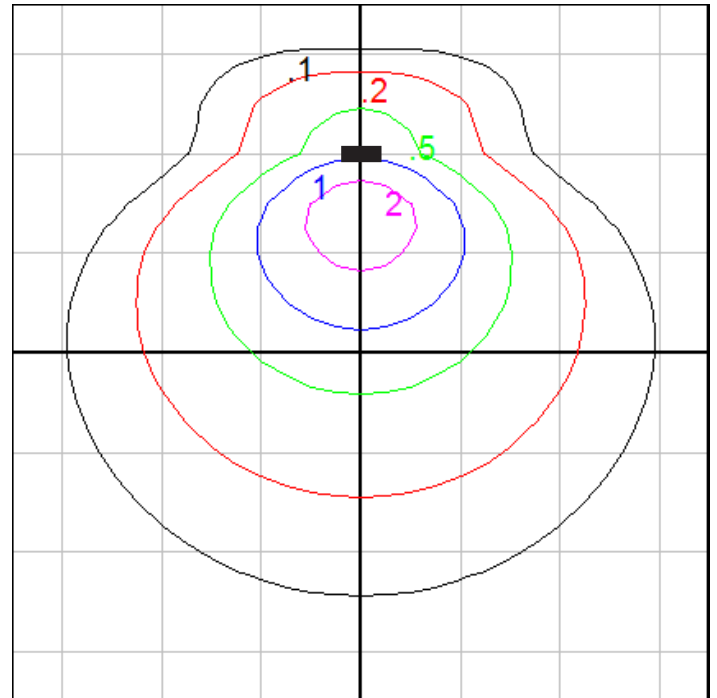
Lumens Per Lamp	N.A. (absolute)
Total Lamp Lumens	N.A. (absolute)
Luminaire Lumens	824
Total Luminaire Efficiency	N.A.
Luminaire Efficacy Rating (LER)	55
Total Luminaire Watts	15
Ballast Factor	1.00
CIE Type	Direct
Spacing Criterion (0-180)	1.28
Spacing Criterion (90-270)	1.28
Spacing Criterion (Diagonal)	1.42
Basic Luminous Shape	Circular w/ Sides
Luminous Length (0-180)	0.00 ft
Luminous Width (90-270)	0.79 ft (Diameter)
Luminous Height	0.10 ft

Zonal Lumen Summary

Zone	Lumens
0-10	22.89
10-20	65.80
20-30	100.57
30-40	122.90
40-50	129.79
50-60	120.11
60-70	95.20
70-80	60.26
80-90	30.06
90-100	20.06
100-110	19.53
110-120	16.47
120-130	11.30
130-140	6.35
140-150	2.51
150-160	0.34
160-170	0.03
170-180	0.01



Ceiling Mount - Isofootcandle grid on floor
Mounting Height = 10 ft. Grid Spacing = 10 ft.



Wall Mount - Isofootcandle grid on floor
Mounting Height = 5 ft. Grid Spacing = 5 ft.

In the interest of product improvement, BEGA reserves the right to make technical changes without notice.

BEGA 1000 Bega Way, Carpinteria, CA 93013 (805)684-0533 Fax (805)566-9474 www.bega-us.com © Copyright BEGA-US 2018

8/3/2018