

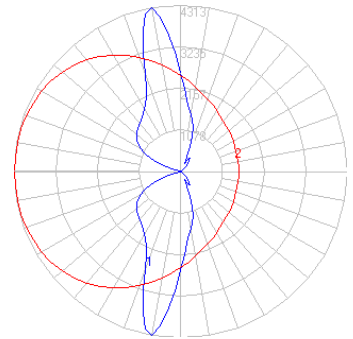
BEGA

Photometric Filename: 33389.IES

TEST: NA
TEST LAB: BEGA
DATE: 04/21/2015
LUMINAIRE: 33 389
LAMP: 86.8W LED



All results in accordance with IESNA LM-79-08



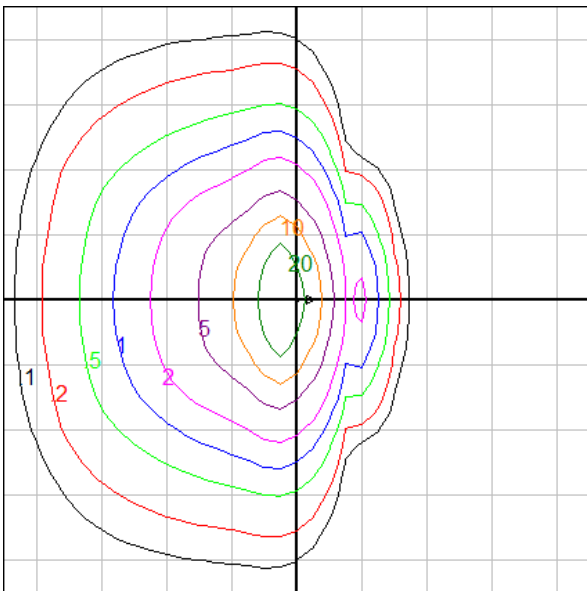
Characteristics

IES Classification	Type I
Longitudinal Classification	Very Short
Lumens Per Lamp	N.A. (absolute)
Total Lamp Lumens	N.A. (absolute)
Luminaire Lumens	9740
Downward Total Efficiency	N.A.
Total Luminaire Efficiency	N.A.
Luminaire Efficacy Rating (LER)	98
Total Luminaire Watts	99
Ballast Factor	1.00
Upward Waste Light Ratio	0.50
Max. Cd.	4313.3 (180H, 170V)
Max. Cd. (<90 Vert.)	4313.3 (180H, 10V)
Max. Cd. (At 90 Deg. Vert.)	.6 (0.0%Lum)
Max. Cd. (80 to <90 Deg. Vert.)	26.5 (0.3%Lum)
Cutoff Classification (deprecated)	N.A. (absolute)

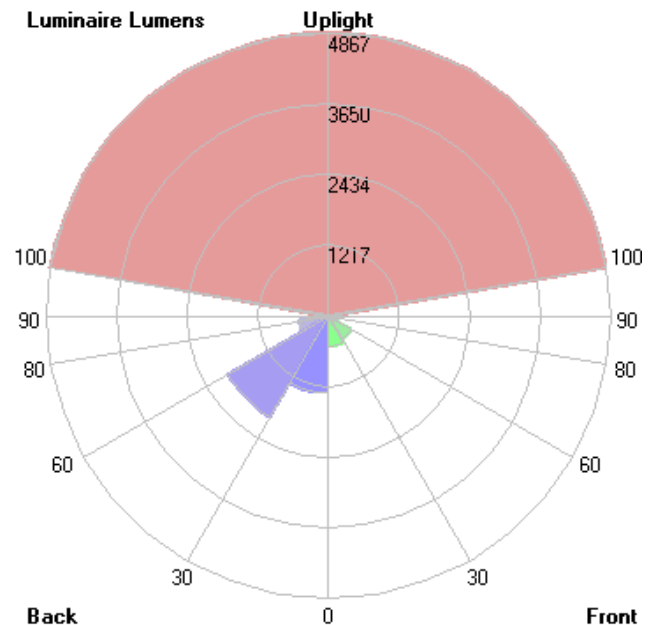
Lum. Classification System (LCS)

LCS Zone	Lumens	%Lamp	%Lum
FL (0-30)	531.6	N.A.	5.5
FM (30-60)	456.5	N.A.	4.7
FH (60-80)	40.5	N.A.	0.4
FVH(80-90)	1.5	N.A.	0.0
BL (0-30)	1329.5	N.A.	13.7
BM (30-60)	2004.0	N.A.	20.6
BH (60-80)	505.0	N.A.	5.2
BVH(80-90)	1.5	N.A.	0.0
UL (90-100)	3.0	N.A.	0.0
UH (100-180)	4867.1	N.A.	50.0
Total	9740.2	N.A.	100.0

BUG Rating B3-U5-G2



Mounting Height = 10 ft. Grid Spacing = 7 ft.



In the interest of product improvement, BEGA reserves the right to make technical changes without notice.