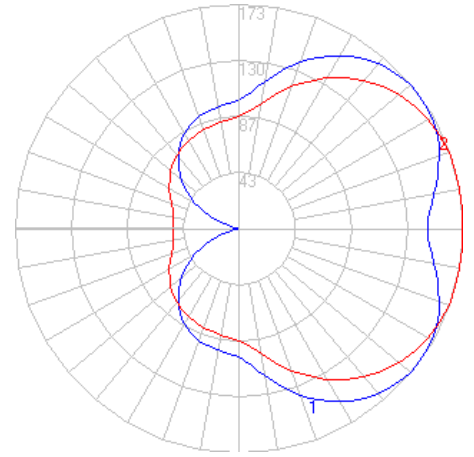


BEGA

Photometric Filename: 33373.ies

TEST: BE_33373
TEST LAB: BEGA
DATE: 12/20/2012
LUMINAIRE: 33 373
LAMP: 16.8W LED



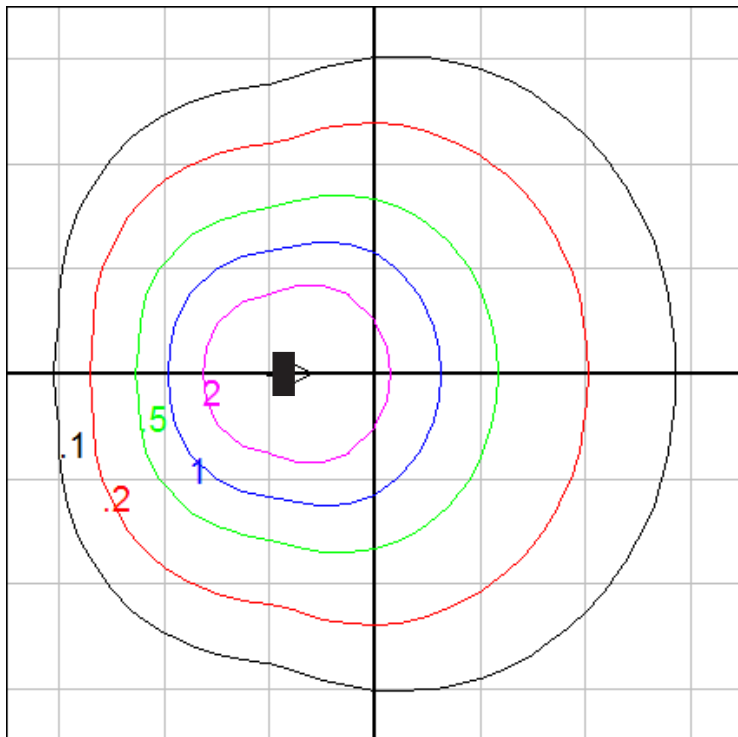
Characteristics

| | |
|------------------------------------|---------------------|
| IES Classification | Type IV |
| Longitudinal Classification | Very Short |
| Lumens Per Lamp | N.A. (absolute) |
| Total Lamp Lumens | N.A. (absolute) |
| Luminaire Lumens | 1186 |
| Downward Total Efficiency | N.A. |
| Total Luminaire Efficiency | N.A. |
| Luminaire Efficacy Rating (LER) | 59 |
| Total Luminaire Watts | 20 |
| Ballast Factor | 1.00 |
| Upward Waste Light Ratio | 0.50 |
| Max. Cd. | 173.2 (15H, 127.5V) |
| Max. Cd. (<90 Vert.) | 173.2 (15H, 52.5V) |
| Max. Cd. (At 90 Deg. Vert.) | 145.4 (12.3%Lum) |
| Max. Cd. (80 to <90 Deg. Vert.) | 153.1 (12.9%Lum) |
| Cutoff Classification (deprecated) | N.A. (absolute) |

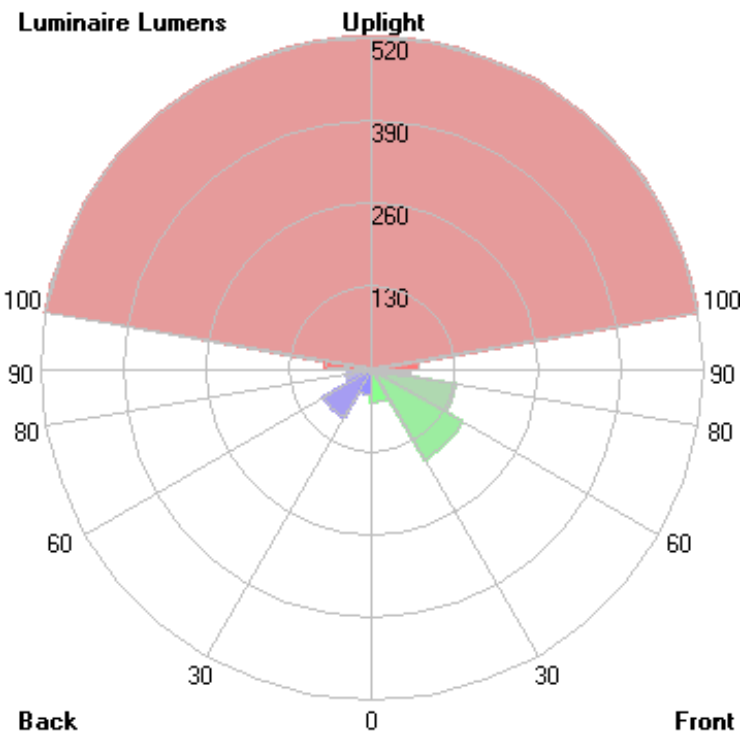
Lum. Classification System (LCS)

| LCS Zone | Lumens | %Lamp | %Lum |
|--------------|--------|-------|-------|
| FL (0-30) | 52.2 | N.A. | 4.4 |
| FM (30-60) | 164.8 | N.A. | 13.9 |
| FH (60-80) | 134.3 | N.A. | 11.3 |
| FVH (80-90) | 62.1 | N.A. | 5.2 |
| BL (0-30) | 40.3 | N.A. | 3.4 |
| BM (30-60) | 87.9 | N.A. | 7.4 |
| BH (60-80) | 40.6 | N.A. | 3.4 |
| BVH (80-90) | 10.7 | N.A. | 0.9 |
| UL (90-100) | 72.8 | N.A. | 6.1 |
| UH (100-180) | 520.2 | N.A. | 43.9 |
| Total | 1185.9 | N.A. | 100.0 |

BUG Rating B0-U4-G1



Wall mount - isofootcandle grid on floor
Mounting Height = 5 ft. Grid Spacing = 5 ft.



In the interest of product improvement, BEGA reserves the right to make technical changes without notice.

BEGA 1000 Bega Way, Carpinteria, CA 93013 (805)684-0533 Fax (805)566-9474 www.bega-us.com © Copyright BEGA-US 2018

8/20/2018