

Application

The material thickness and strong crystal glass makes this impact-resistant LED luminaire extremely robust. Arranged individually or in groups, this is a great design element for a host of lighting applications.

Materials

Luminaire housing constructed of die-cast marine grade, copper free (≤0.3% copper content) A360.0 aluminum alloy
Heavy pressed crystal glass, inside white
High temperature silicone gasket
Mechanically captive stainless steel fasteners

NRTL listed to North American Standards, suitable for wet locations
Protection class IP 65
Weight: 5.1 lbs

Electrical

Operating voltage	120-277V AC
Minimum start temperature	-20° C
LED module wattage	8.4 W
System wattage	11 W
Controllability	0-10V dimmable
Color rendering index	Ra > 80
Luminaire lumens	723 lumens (3000K)
Lifetime at Ta = 15° C	>500,000 h (L70)
Lifetime at Ta = 55° C	200,000 h (L70)

LED color temperature

4000K - Product number + **K4**
3500K - Product number + **K35**
3000K - Product number + **K3**
2700K - Product number + **K27**

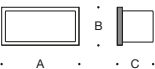
BEGA can supply you with suitable LED replacement modules for up to 20 years after the purchase of LED luminaires - see website for details

Finish

All BEGA standard finishes are matte, textured polyester powder coat with minimum 3 mil thickness.

Available colors	Black (BLK)	White (WHT)	RAL:
	Bronze (BRZ)	Silver (SLV)	CUS:

Type:
BEGA Product:
Project:
Modified:



LED wall luminaire · unshielded				
	LED	A	B	C
33 371	8.4 W	10 1/4	5	4 1/2

