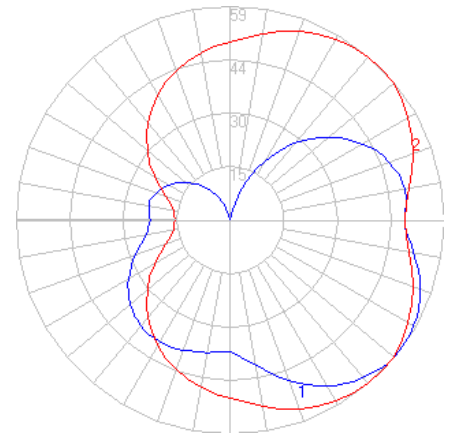


BEGA

Photometric Filename: 33328.IES

TEST: BE-33328
TEST LAB: BEGA
DATE: 10/12/2017
LUMINAIRE: 33 328
LAMP: 3.9W LED



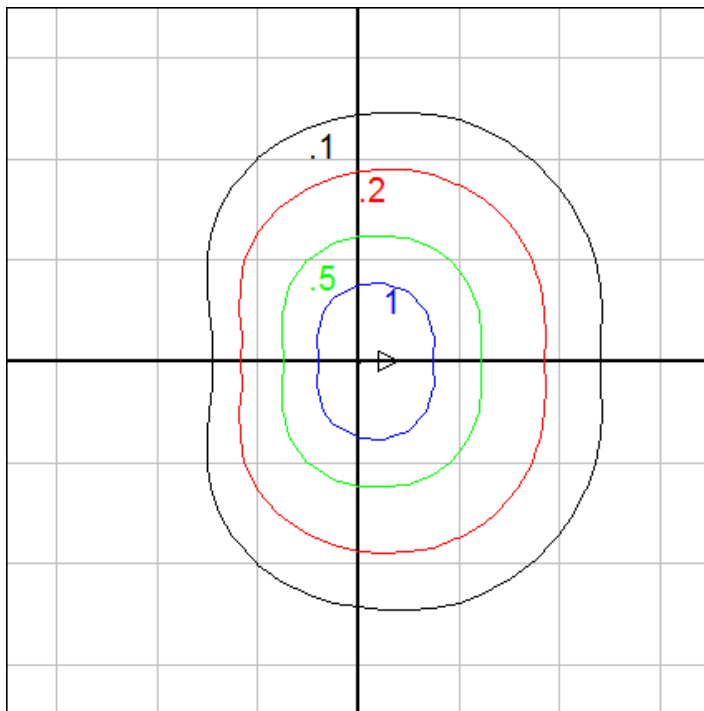
Characteristics

IES Classification	Type IV
Longitudinal Classification	Very Short
Lumens Per Lamp	N.A. (absolute)
Total Lamp Lumens	N.A. (absolute)
Luminaire Lumens	393
Downward Total Efficiency	N.A.
Total Luminaire Efficiency	N.A.
Luminaire Efficacy Rating (LER)	65
Total Luminaire Watts	6
Ballast Factor	1.00
Upward Waste Light Ratio	0.37
Max. Cd.	59.1 (50H, 52.5V)
Max. Cd. (<90 Vert.)	59.1 (50H, 52.5V)
Max. Cd. (At 90 Deg. Vert.)	48.1 (12.2%Lum)
Max. Cd. (80 to <90 Deg. Vert.)	51.5 (13.1%Lum)
Cutoff Classification (deprecated)	N.A. (absolute)

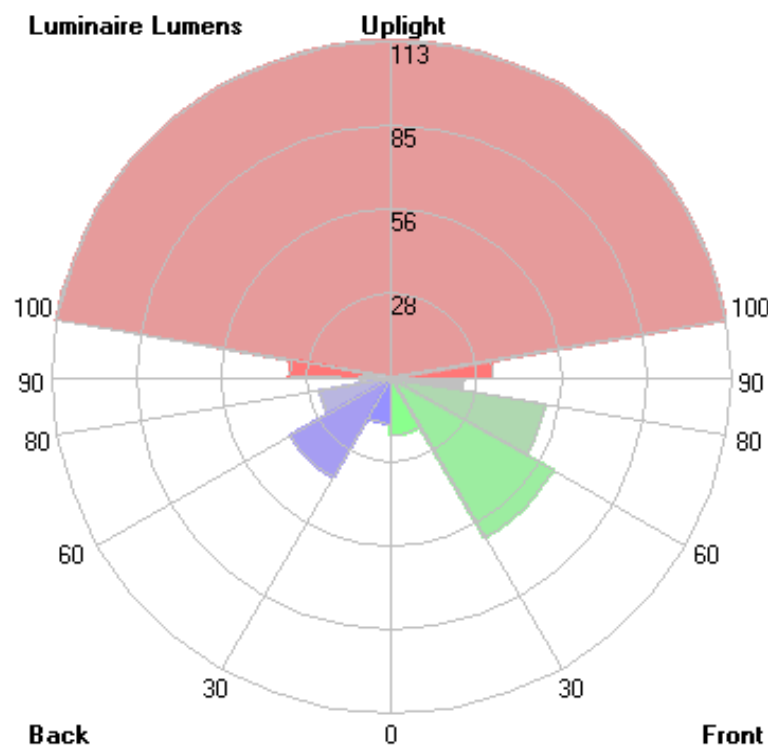
Lum. Classification System (LCS)

LCS Zone	Lumens	%Lamp	%Lum
FL (0-30)	19.3	N.A.	4.9
FM (30-60)	62.0	N.A.	15.8
FH (60-80)	51.8	N.A.	13.2
FVH (80-90)	24.1	N.A.	6.1
BL (0-30)	15.7	N.A.	4.0
BM (30-60)	38.7	N.A.	9.9
BH (60-80)	24.4	N.A.	6.2
BVH (80-90)	10.2	N.A.	2.6
UL (90-100)	33.7	N.A.	8.6
UH (100-180)	113.0	N.A.	28.8
Total	392.9	N.A.	100.0

BUG Rating B0-U3-G1



Mounting Height = 5 ft. Grid Spacing = 5 ft.



In the interest of product improvement, BEGA reserves the right to make technical changes without notice.

BEGA 1000 Bega Way, Carpinteria, CA 93013 (805)684-0533 Fax (805)566-9474 www.bega-us.com © Copyright BEGA-US 2017

10/12/2017