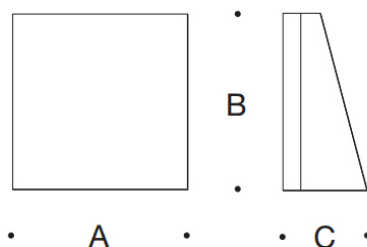


Tools Required:

3mm hex key
4mm hex key
11/32" nut driver
Phillips head screw driver medium



Dimensions

A: 11 "
B: 11 "
C: 5-3/8 "



Protection Class: IP65

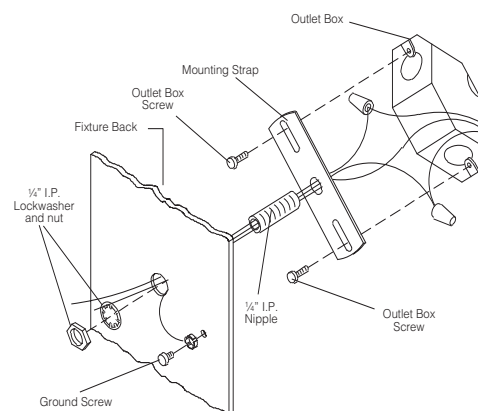
Weight: 8.4 lbs

Notice to Installer for 33 243:

1. For wall applications only.
2. Mounts directly to standard recessed 4" wiring box (by others) using mounting kit (provided).
3. In conformance with UL Standard 1598, a silicone based sealant must be used between luminaire and supporting wall.
4. LEDs are high-quality electronic components! Please avoid touching the light output opening of the LED directly during installation.

33 243 - Installation:

1. Loosen (3) M5 socket head screws and remove luminaire face plate.
2. Loosen (1) M4 socket head screw and remove reflector.
3. Feed luminaire wires through fixture base, IP nipple (provided), and center hole in mounting strap.
4. Make supply wiring and luminaire wiring connections inside the octagonal wiring box (NOTE: See below for additional wiring instructions with optional EMPK if applicable):
MAIN VOLTAGE SUPPLY WIRE TO BLACK LUMINAIRE WIRE
NEUTRAL (COMMON) SUPPLY WIRE TO WHITE LUMINAIRE WIRE
GREEN GROUND WIRE TO GREEN LUMINAIRE WIRE
Dimming (if applicable):
DIMMING CONTROL WIRE (+) TO POSITIVE DRIVER DIM CONTROL WIRE
DIMMING CONTROL WIRE (-) TO NEGATIVE DRIVER DIM CONTROL WIRE
5. Attach mounting strap (provided) to wiring box using outlet box screws (by others).
6. Place a small bead of silicone around the back side of the luminaire base that will come in contact with the finished wall (exterior applications only).
7. Attach 1/4" nipple to mounting strap and place luminaire over nipple.
8. Use lockwasher and nut (provided) to secure luminaire on nipple. Tighten nut.
9. Replace luminaire face plate and tighten (3) M5 socket head screws evenly.



33 243 - EMPK (optional)

EMPK wiring instructions:

CONSTANT MAIN VOLTAGE SUPPLY WIRE TO BLACK EMERGENCY DRIVER AND BATTERY LUMINAIRE WIRE;
SWITCHED MAIN VOLTAGE SUPPLY WIRE TO BLACK LED DRIVER WIRE;
NEUTRAL (COMMON) SUPPLY WIRE TO WHITE LUMINAIRE WIRE;
GREEN GROUND WIRE TO GREEN LUMINAIRE WIRE.

Dimming (if applicable):

DIMMING CONTROL WIRE (+) TO POSITIVE DRIVER DIM CONTROL WIRE;
DIMMING CONTROL WIRE (-) TO NEGATIVE DRIVER DIM CONTROL WIRE.

NOTE: Battery comes fully charged. Connect battery harness after making supply

Relamping/Maintenance

No relamping required.

Accessories

Please refer to the appropriate accessory installation sheet for further instruction when applicable.

Replacement Parts

Description	Part No
Face Plate	FP3243
Driver (120-277V)	75985-13
LED Module (3000K)	LED-0315/830
LED Module (4000K)	LED-0315/840

Lamp: 29.8W LED

In the interest of product improvement, BEGA reserves the right to make technical changes without notice.

BEGA 1000 Bega Way, Carpinteria, CA 93013 (805)684-0533 Fax (805)566-9474 www.bega-us.com © Copyright BEGA-US 2018

Product Safety Warnings:

THIS PRODUCT MUST BE INSTALLED IN ACCORDANCE WITH THE APPLICABLE INSTALLATION CODE BY A PERSON FAMILIAR WITH THE CONSTRUCTION AND OPERATION OF THE PRODUCT AND THE HAZARDS INVOLVED. SUITABLE FOR WET LOCATIONS.

MIN 60°C SUPPLY CONDUCTORS.

CE PRODUIT DOIT ÊTRE INSTALLÉ SELON LE CODE D'INSTALLATION PERTINENT, PAR UNE PERSONNE QUI CONNAÎT BIEN LE PRODUIT ET SON FONCTIONNEMENT AINSI QUE LES RISQUES INHÉRENTS. CONVIENT AUX EMPLACEMENTS MOUILLÉS.

LES FILS D'ALIMENTATION 60°C MIN.
