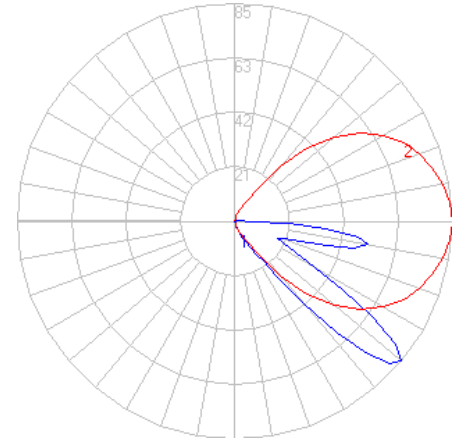


BEGA

Photometric Filename: 33019.ies

TEST: 33019
 TEST LAB: BEGA
 DATE: 9/1/2015
 LUMINAIRE: 33 019
 LAMP: 3.8W LED



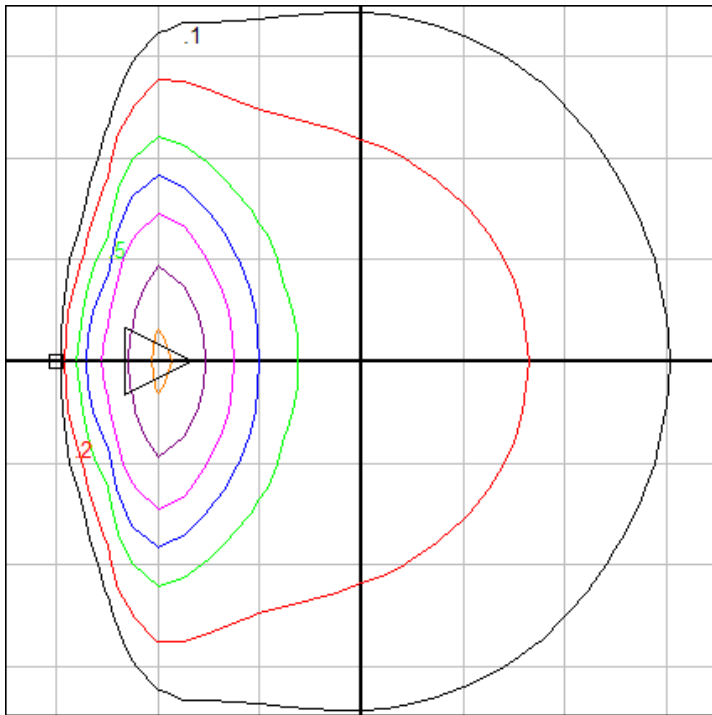
Characteristics

IES Classification	Type IV
Longitudinal Classification	Very Short
Lumens Per Lamp	N.A. (absolute)
Total Lamp Lumens	N.A. (absolute)
Luminaire Lumens	63
Downward Total Efficiency	N.A.
Total Luminaire Efficiency	N.A.
Luminaire Efficacy Rating (LER)	9
Total Luminaire Watts	7
Ballast Factor	1.00
Upward Waste Light Ratio	0.00
Max. Cd.	84.6 (0H, 50V)
Max. Cd. (<90 Vert.)	84.6 (0H, 50V)
Max. Cd. (At 90 Deg. Vert.)	0 (0.0%Lum)
Max. Cd. (80 to <90 Deg. Vert.)	52.4 (83.2%Lum)
Cutoff Classification (deprecated)	N.A. (absolute)

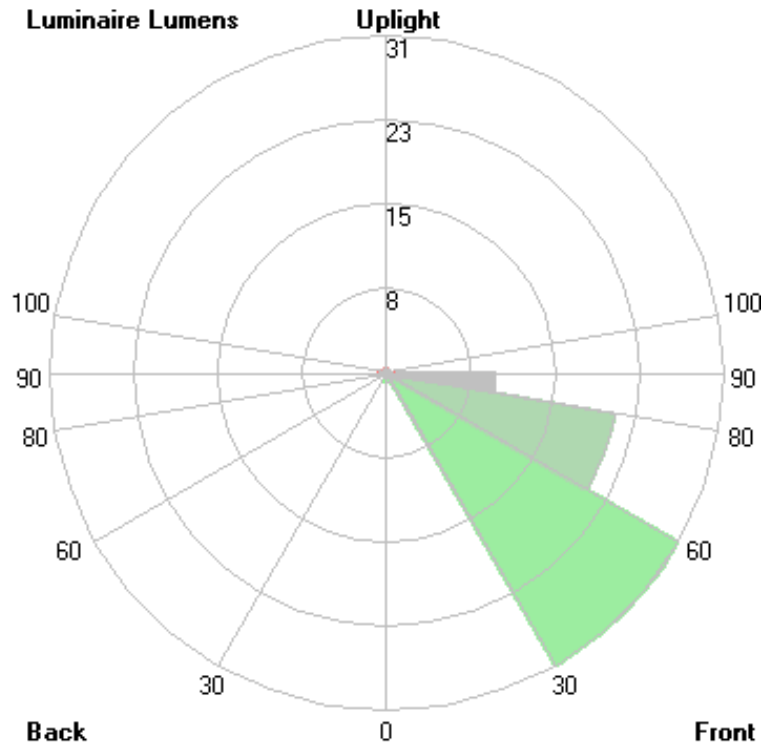
Lum. Classification System (LCS)

LCS Zone	Lumens	%Lamp	%Lum
FL (0-30)	0.9	N.A.	1.4
FM (30-60)	30.9	N.A.	49.2
FH (60-80)	21.2	N.A.	33.8
FVH(80-90)	9.7	N.A.	15.4
BL (0-30)	0.0	N.A.	0.0
BM (30-60)	0.0	N.A.	0.0
BH (60-80)	0.0	N.A.	0.0
BVH(80-90)	0.0	N.A.	0.0
UL (90-100)	0.0	N.A.	0.0
UH (100-180)	0.0	N.A.	0.0
Total	62.7	N.A.	100.0

BUG Rating B0-U0-G0



Mounting Height = 1.5 ft. Grid Spacing = 1.5 ft.

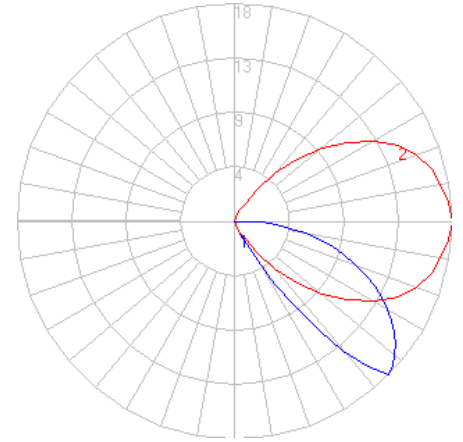


In the interest of product improvement, BEGA reserves the right to make technical changes without notice.

BEGA

Photometric Filename: 33019AMB.ies

TEST: L081911604
 TEST LAB: LIGHT LABORATORY, INC.
 DATE: 8/21/2019
 LUMINAIRE: 33 019 Amber
 LAMP: 4.2W LED



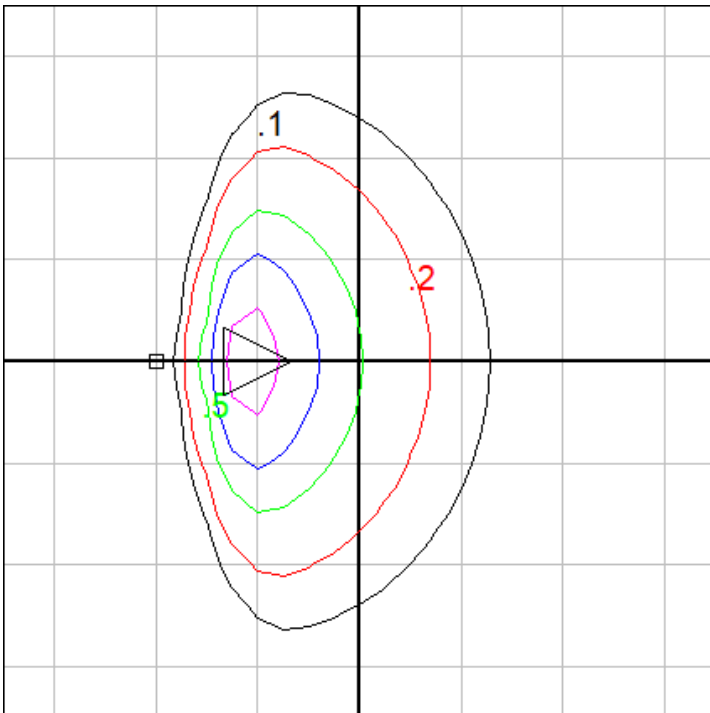
Characteristics

IES Classification	Type IV
Longitudinal Classification	Very Short
Lumens Per Lamp	N.A. (absolute)
Total Lamp Lumens	N.A. (absolute)
Luminaire Lumens	17
Downward Total Efficiency	N.A.
Total Luminaire Efficiency	N.A.
Luminaire Efficacy Rating (LER)	3
Total Luminaire Watts	5.45
Ballast Factor	1.00
Upward Waste Light Ratio	0.00
Max. Cd.	17.743 (0H, 45V)
Max. Cd. (<90 Vert.)	17.743 (0H, 45V)
Max. Cd. (At 90 Deg. Vert.)	0 (0.0%Lum)
Max. Cd. (80 to <90 Deg. Vert.)	5.868 (32.6%Lum)
Cutoff Classification (deprecated)	N.A. (absolute)

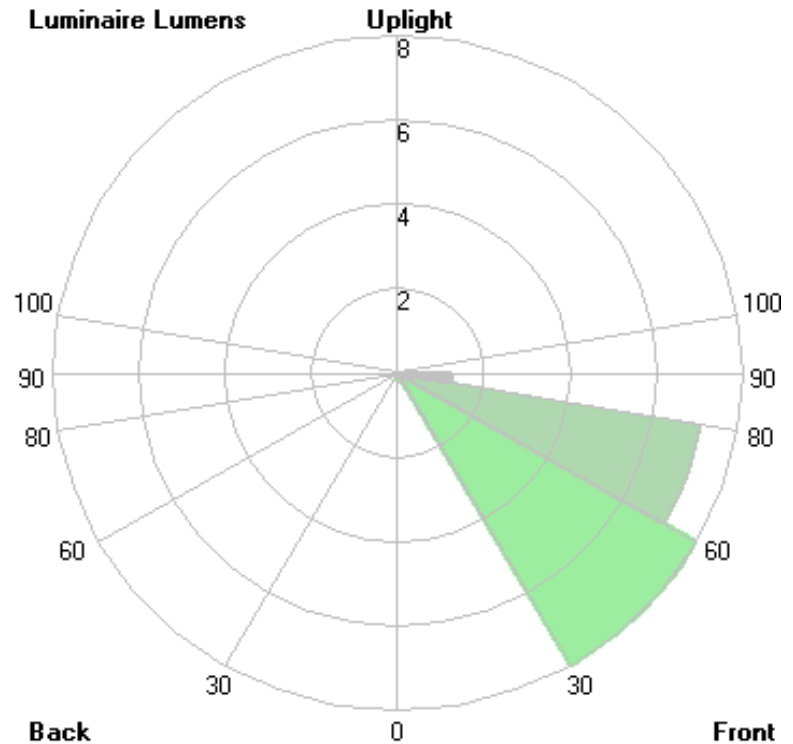
Lum. Classification System (LCS)

LCS Zone	Lumens	%Lamp	%Lum
FL (0-30)	0.2	N.A.	1.3
FM (30-60)	8.3	N.A.	48.2
FH (60-80)	7.4	N.A.	42.9
FVH(80-90)	1.3	N.A.	7.8
BL (0-30)	< 0.05	N.A.	0.0
BM (30-60)	0.0	N.A.	0.0
BH (60-80)	0.0	N.A.	0.0
BVH(80-90)	0.0	N.A.	0.0
UL (90-100)	0.0	N.A.	0.0
UH (100-180)	0.0	N.A.	0.0
Total	17.2	N.A.	100.0

BUG Rating B0-U0-G0



Mounting Height = 1.5 ft. Grid Spacing = 1.5 ft.



In the interest of product improvement, BEGA reserves the right to make technical changes without notice.