

LED pillar luminaire with shade

Material: Luminaire housing constructed of copper and brass. Shade constructed of copper. Cast bronze base plate.

Glass: Hand-blown, three-ply opal glass with screw neck.

Electrical: 22W LED luminaire, 25.5 total system watts, -20°C start temperature. Integral 120V through 277V electronic LED driver, 0-10V dimming. LED module(s) are available from factory for easy replacement. LED color temperature is 3000K with a >80 CRI.

Note: LEDs supplied with luminaire. Due to the dynamic nature of LED technology, LED luminaire data on this sheet is subject to change at the discretion of BEGA-US. For the most current technical data, please refer to www.bega-us.com.

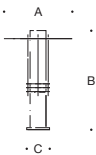
Finish: Natural copper finish with brass and natural bronze base plate. Time and weather factors will create the natural patina of copper and bronze.

CSA certified to U.S. and Canadian standards, suitable for wet locations. Protection class IP65

Weight: 20.7 lbs

Luminaire Lumens: 1342

Type:
BEGA Product:
Project:
Voltage:
Color:
Options:
Modified:



Pillar luminaires				
Lamp		A	B	C
31 437	22.0 W LED	17 3/4	27 5/8	6 7/8