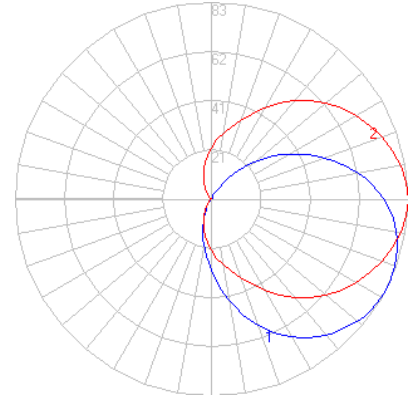


BEGA

Photometric Filename: 31183.ies

TEST: BE31183
 TEST LAB: BEGA
 DATE: 4/15/2016
 LUMINAIRE: 31 183
 LAMP: 7.9W LED



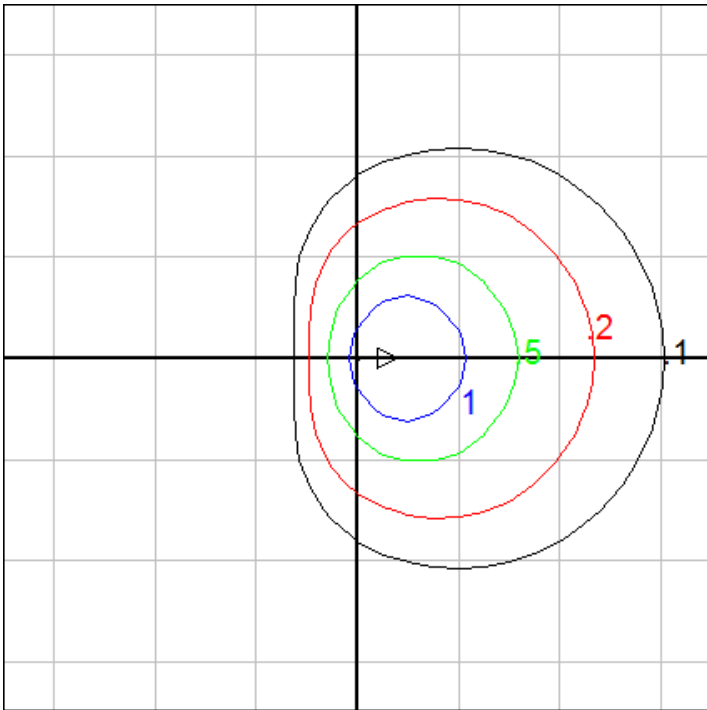
Characteristics

IES Classification	Type IV
Longitudinal Classification	Very Short
Lumens Per Lamp	N.A. (absolute)
Total Lamp Lumens	N.A. (absolute)
Luminaire Lumens	257
Downward Total Efficiency	N.A.
Total Luminaire Efficiency	N.A.
Luminaire Efficacy Rating (LER)	26
Total Luminaire Watts	10
Ballast Factor	1.00
Upward Waste Light Ratio	0.28
Max. Cd.	82.8 (0H, 62.5V)
Max. Cd. (<90 Vert.)	82.8 (0H, 62.5V)
Max. Cd. (At 90 Deg. Vert.)	72.7 (28.3%Lum)
Max. Cd. (80 to <90 Deg. Vert.)	79 (30.7%Lum)
Cutoff Classification (deprecated)	N.A. (absolute)

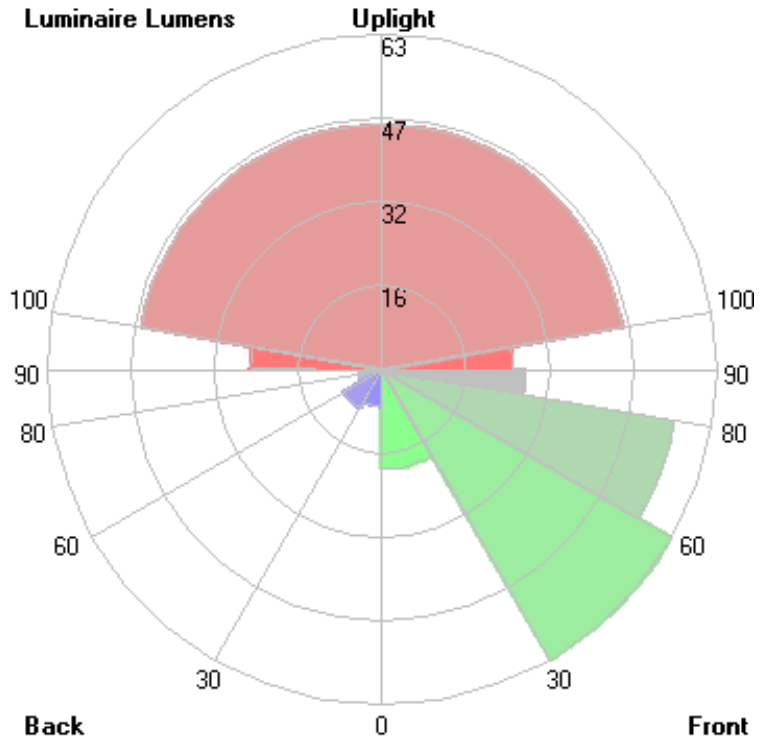
Lum. Classification System (LCS)

<u>LCS Zone</u>	<u>Lumens</u>	<u>%Lamp</u>	<u>%Lum</u>
FL (0-30)	18.8	N.A.	7.3
FM (30-60)	63.2	N.A.	24.6
FH (60-80)	55.9	N.A.	21.8
FVH (80-90)	27.0	N.A.	10.5
BL (0-30)	7.1	N.A.	2.8
BM (30-60)	8.3	N.A.	3.2
BH (60-80)	4.3	N.A.	1.7
BVH (80-90)	1.6	N.A.	0.6
UL (90-100)	24.8	N.A.	9.6
UH (100-180)	46.1	N.A.	17.9
Total	257.1	N.A.	100.0

BUG Rating B0-U2-G1



Mounting Height= 5 ft. Grid Spacing = 5 ft.



In the interest of product improvement, BEGA reserves the right to make technical changes without notice.