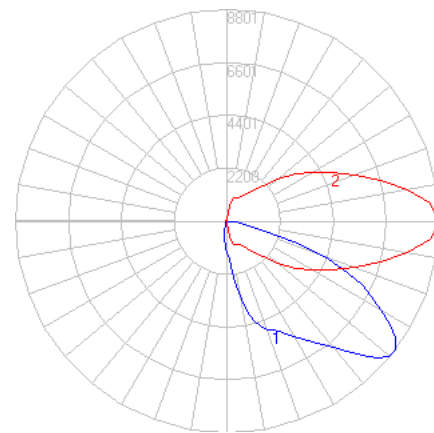


BEGA

Photometric Filename: 24816.ies

TEST: BE_24816
TEST LAB: BEGA
DATE: 11/30/2016
LUMINAIRE: 24 816
LAMP: 55.3W LED



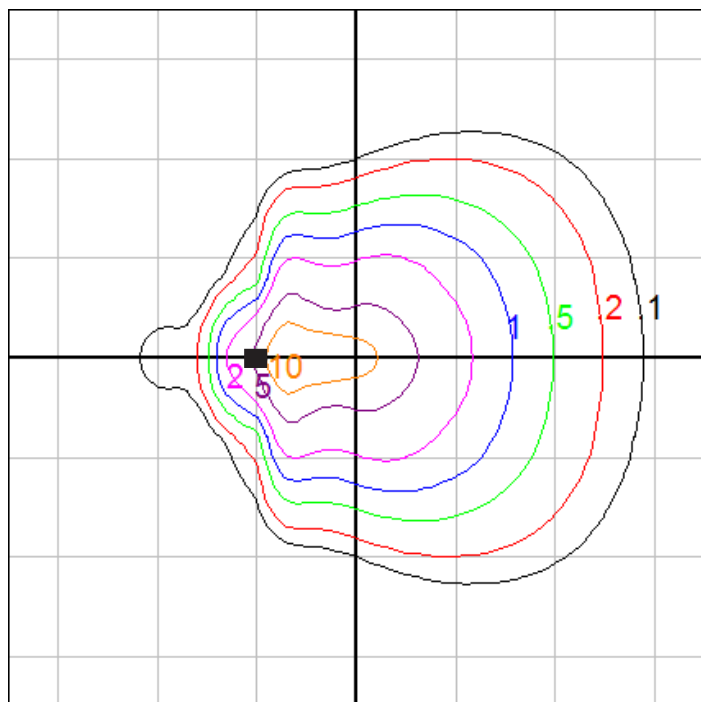
Characteristics

IES Classification	Type III
Longitudinal Classification	Very Short
Lumens Per Lamp	N.A. (absolute)
Total Lamp Lumens	N.A. (absolute)
Luminaire Lumens	6672
Downward Total Efficiency	N.A.
Total Luminaire Efficiency	N.A.
Luminaire Efficacy Rating (LER)	109
Total Luminaire Watts	61
Ballast Factor	1.00
Upward Waste Light Ratio	N.A.
Max. Cd.	8801 (0H, 52.5V)
Max. Cd. (<90 Vert.)	8801 (0H, 52.5V)
Max. Cd. (At 90 Deg. Vert.)	2.4 (0.0%Lum)
Max. Cd. (80 to <90 Deg. Vert.)	551.2 (8.3%Lum)
Cutoff Classification (deprecated)	N.A. (absolute)

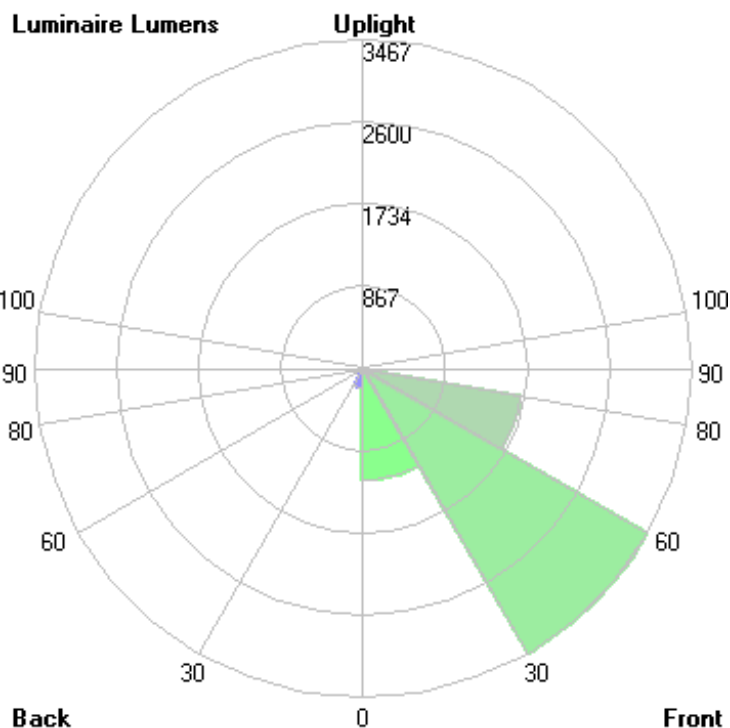
Lum. Classification System (LCS)

LCS Zone	Lumens	%Lamp	%Lum
FL (0-30)	1181.6	N.A.	17.7
FM (30-60)	3467.0	N.A.	52.0
FH (60-80)	1690.9	N.A.	25.3
FVH (80-90)	39.4	N.A.	0.6
BL (0-30)	203.0	N.A.	3.0
BM (30-60)	72.8	N.A.	1.1
BH (60-80)	14.8	N.A.	0.2
BVH (80-90)	2.4	N.A.	0.0
UL (90-100)	0.0	N.A.	0.0
UH (100-180)	0.0	N.A.	0.0
Total	6672.0	N.A.	100.0

BUG Rating B1-U0-G1



Mounting Height = 15 ft Grid Spacing = 15 ft.



In the interest of product improvement, BEGA reserves the right to make technical changes without notice.

BEGA 1000 Bega Way, Carpinteria, CA 93013 (805)684-0533 Fax (805)566-9474 www.bega-us.com © Copyright BEGA-US 2018

2/7/2018