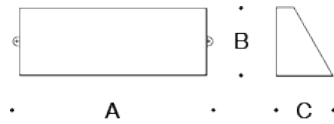


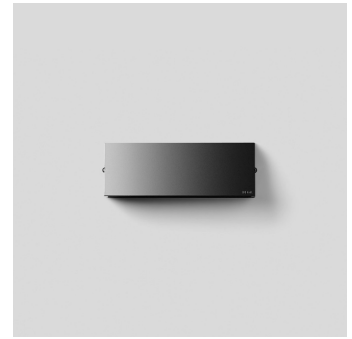
**Tools Required:**

- 4mm hex head screwdriver
- Phillips head screwdriver



**Dimensions**

- A:** 12-3/8"
- B:** 4-3/8"
- C:** 3-3/8"



**Protection Class:** IP 65

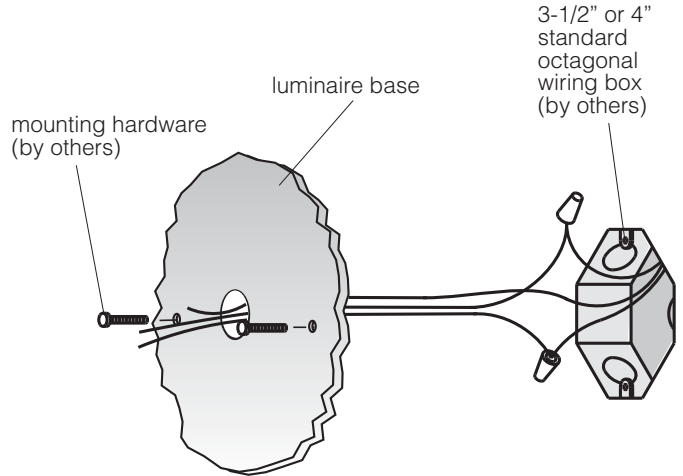
**Weight:** 3.53 lbs.

**Notice to Installer for 24 374:**

- For wall applications only.
- Mounts directly to finished wall surface over standard recessed 4" octagonal wiring box (by others).
- In conformance with UL Standard 1598, a silicone based sealant must be used between luminaire and supporting wall.
- LEDs are high-quality electronic components! Please avoid touching the light output opening of the LED directly during installation.
- For downwards orientation only.

**24 374 - installation:**

- Loosen front (2) 4mm hex screws to separate luminaire housing from luminaire base.
- Feed luminaire wires through luminaire base.
- Make supply wiring and luminaire wiring connections in the octagonal wiring box:
  - MAIN VOLTAGE SUPPLY WIRE TO BLACK LUMINAIRE WIRE
  - NEUTRAL (COMMON) SUPPLY WIRE TO WHITE LUMINAIRE WIRE
  - GREEN GROUND WIRE TO GREEN LUMINAIRE WIRE
- 0-10V DIMMING (if applicable):
  - DIMMING CONTROL WIRE (+) TO POSITIVE LUMINAIRE DIM CONTROL WIRE
  - DIMMING CONTROL WIRE (-) TO NEGATIVE LUMINAIRE DIM CONTROL WIRE
- Place a small bead of silicone around the back side of the mounting plate that will come in contact with the finished wall (exterior applications only).
- Mount luminaire directly to the finished wall surface over recessed wiring box using hardware by others (minimum size 8-32 screws).
- Replace front luminaire housing and tighten (2) 4mm hex screws, making sure that the gasket is seated properly. Do not overtighten.



**Relamping/Maintenance**

Clean regularly with solvent-free cleansers. Do not use high pressure cleaners.

**Accessories**

Please refer to the appropriate accessory installation sheet for further instruction when applicable.

**Replacement Parts**

Description	Part No
Faceplate	FP24374
LED Driver	76059
LED Module (3000K)	LED-0519/830
LED Module (4000K)	LED-0519/840

**Lamp:** 12.3W LED

In the interest of product improvement, BEGA reserves the right to make technical changes without notice.

**Product Safety Warnings:**

**THIS PRODUCT MUST BE INSTALLED IN ACCORDANCE WITH THE APPLICABLE INSTALLATION CODE BY A PERSON FAMILIAR WITH THE CONSTRUCTION AND OPERATION OF THE PRODUCT AND THE HAZARDS INVOLVED. SUITABLE FOR WET LOCATIONS.**

**MIN 90°C SUPPLY CONDUCTORS.**

**CE PRODUIT DOIT ÊTRE INSTALLÉ SELON LE CODE D'INSTALLATION PERTINENT, PAR UNE PERSONNE QUI CONNAÎT BIEN LE PRODUIT ET SON FONCTIONNEMENT AINSI QUE LES RISQUES INHÉRENTS. CONVIENT AUX EMPLACEMENTS MOUILLÉS.**

**LES FILS D'ALIMENTATION 90°C MIN.**

---