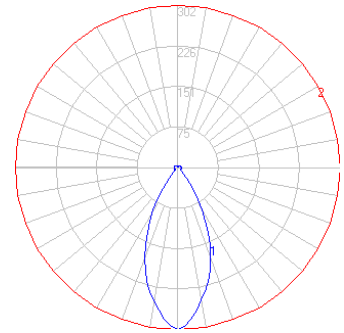


BEGA

Photometric Filename: 23664.IES

TEST: LI_23664
TEST LAB: BEGA
DATE: 6/27/2014
LUMINAIRE: 23664
LAMP: 19W LED

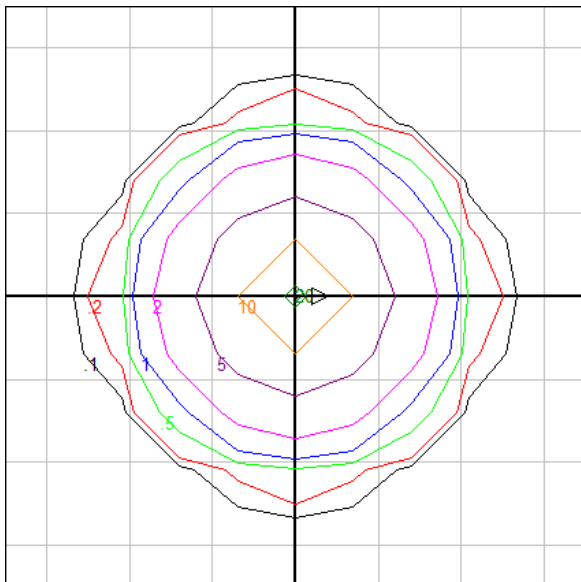


Characteristics

Lumens Per Lamp	N.A. (absolute)
Total Lamp Lumens	N.A. (absolute)
Luminaire Lumens	1639
Total Luminaire Efficiency	N.A.
Luminaire Efficacy Rating (LER)	68
Total Luminaire Watts	24
Ballast Factor	1.00
CIE Type	Direct
Spacing Criterion (0-180)	0.62
Spacing Criterion (90-270)	0.62
Spacing Criterion (Diagonal)	0.76
Basic Luminous Shape	Circular w/ Sides
Luminous Length (0-180)	0.00 m
Luminous Width (90-270)	0.19 m (Diameter)
Luminous Height	0.06 m

Luminance Data (cd/sq.m)

Angle In Degrees	Average 0-Deg	Average 45-Deg	Average 90-Deg
45	6598	6598	6598
55	496	496	496
65	543	543	543
75	712	712	712
85	966	966	966



Mounting Height = 10 ft. Grid Spacing = 5 ft.

In the interest of product improvement, BEGA reserves the right to make technical changes without notice.

BEGA 1000 Bega Way, Carpinteria, CA 93013 (805)684-0533 Fax (805)566-9474 www.bega-us.com © Copyright BEGA-US 2016

8/16/2016