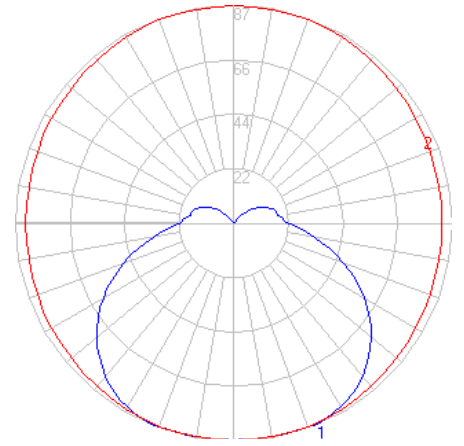


# BEGA

Photometric Filename: 22450.IES

TEST: BE\_22450  
 TEST LAB: BEGA  
 DATE: 12/21/2016  
 LUMINAIRE: 22 450  
 LAMP: 3.9W LED

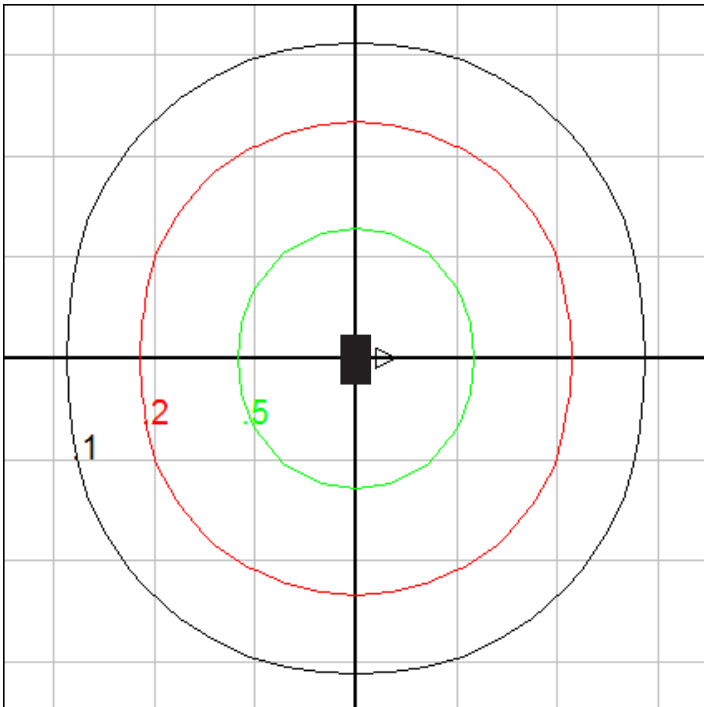


## Characteristics

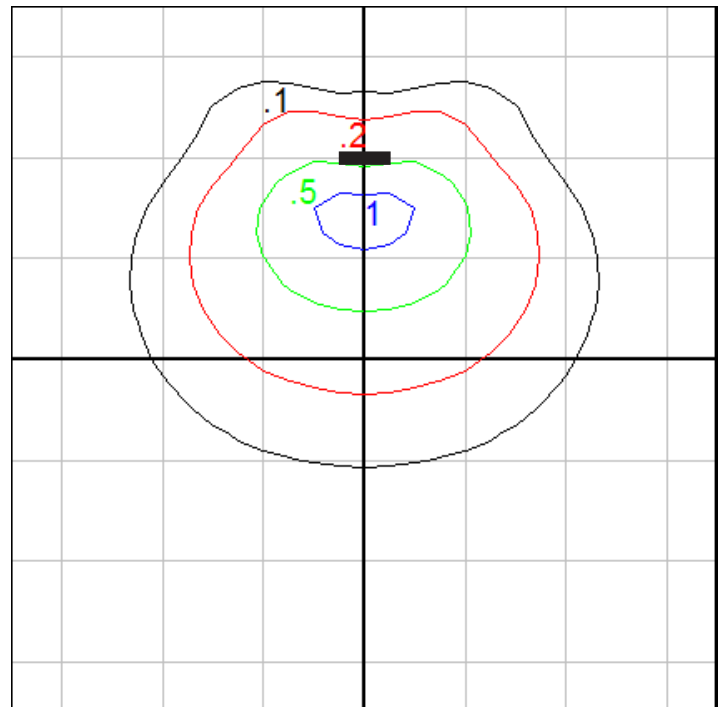
Lumens Per Lamp	N.A. (absolute)
Total Lamp Lumens	N.A. (absolute)
Luminaire Lumens	395
Total Luminaire Efficiency	N.A.
Luminaire Efficacy Rating (LER)	66
Total Luminaire Watts	6
Ballast Factor	1.00
CIE Type	Semi-Direct
Spacing Criterion (0-180)	1.34
Spacing Criterion (90-270)	1.46
Spacing Criterion (Diagonal)	1.56
Basic Luminous Shape	Rectangular w/Sides
Luminous Length (0-180)	0.31 ft
Luminous Width (90-270)	0.61 ft
Luminous Height	0.10 ft

## Zonal Lumen Summary

Zone	Lumens
0-10	8.29
10-20	24.36
20-30	38.81
30-40	49.82
40-50	55.72
50-60	55.49
60-70	48.99
70-80	37.30
80-90	24.52
90-100	17.16
100-110	14.54
110-120	10.57
120-130	6.24
130-140	2.63
140-150	0.61
150-160	0.01
160-170	0.00
170-180	0.00



Ceiling Mount - Isofootcandle Grid on Floor  
 Mounting Height = 10 ft. Grid Spacing = 5 ft.



Wall Mount - Isofootcandle Grid on Floor  
 Mounting Height = 5 ft. Grid Spacing = 5 ft.

In the interest of product improvement, BEGA reserves the right to make technical changes without notice.