



**Wall luminaires · Pillar luminaires · Pole-top luminaires**

A series of complimentary wall, pillar and pole-top luminaires with partially shielded light distribution. A combination of materials in perfect harmony with this classic luminaire shape. Whether as single luminaires or arranged in groups, these luminaires are perfect architectural elements.

Cast bronze and copper · three-ply opal glass

LED color temperatures: 2700K, 3000K, 3500K, 4000K

BEGA luminaires offer a minimum service life of 60,000 hours, with suitable LED replacement modules guaranteed for up to 20 years after date of purchase. Further LED technical data including luminous flux, CRI, dimming and electrical characteristics are provided on the individual luminaire specification sheets, available at [www.bega-us.com](http://www.bega-us.com)

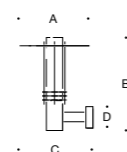
Natural bronze and copper. Time and weather factors will create the natural patina of bronze and copper.

NRTL listed to North American standards · Suitable for wet locations

Protection class IP 44

Pillar and pole-top luminaires protection class IP 65

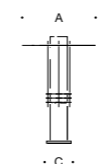
In the table are compatible BOOM luminaire poles made of copper with a base made of cast bronze. A complete overview including technical data of all BOOM poles and anchorage units is given on page 408 - 409.



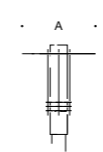
Wall luminaires					
	LED	A	B	C	D
<b>31 086</b>	5.3 W	13%	16	15	4 1/4
<b>31 087</b>	13.4 W	17%	25%	19%	5%



Pillar luminaires



Pillar luminaires				
	LED	A	B	C
<b>31 400</b>	6.4 W	13%	18%	5%
<b>31 437</b>	22.0 W	17%	27%	6%



Pole-top luminaires				Luminaire poles
	LED	A	B	Pole
<b>84 045</b>	12.3 W	13%	16 1/2	<b>70 552 · 70 550</b>
<b>84 038</b>	13.4 W	17%	25%	<b>70 553 · 70 551</b>

