



Pole-top luminaires

with symmetric light distribution

A series of pole top luminaires with shielded or unshielded symmetric light distribution. The symmetric light distribution is ideal for illuminating squares, plazas and other open areas.

Die-cast and extruded aluminum

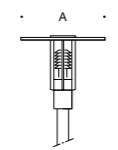
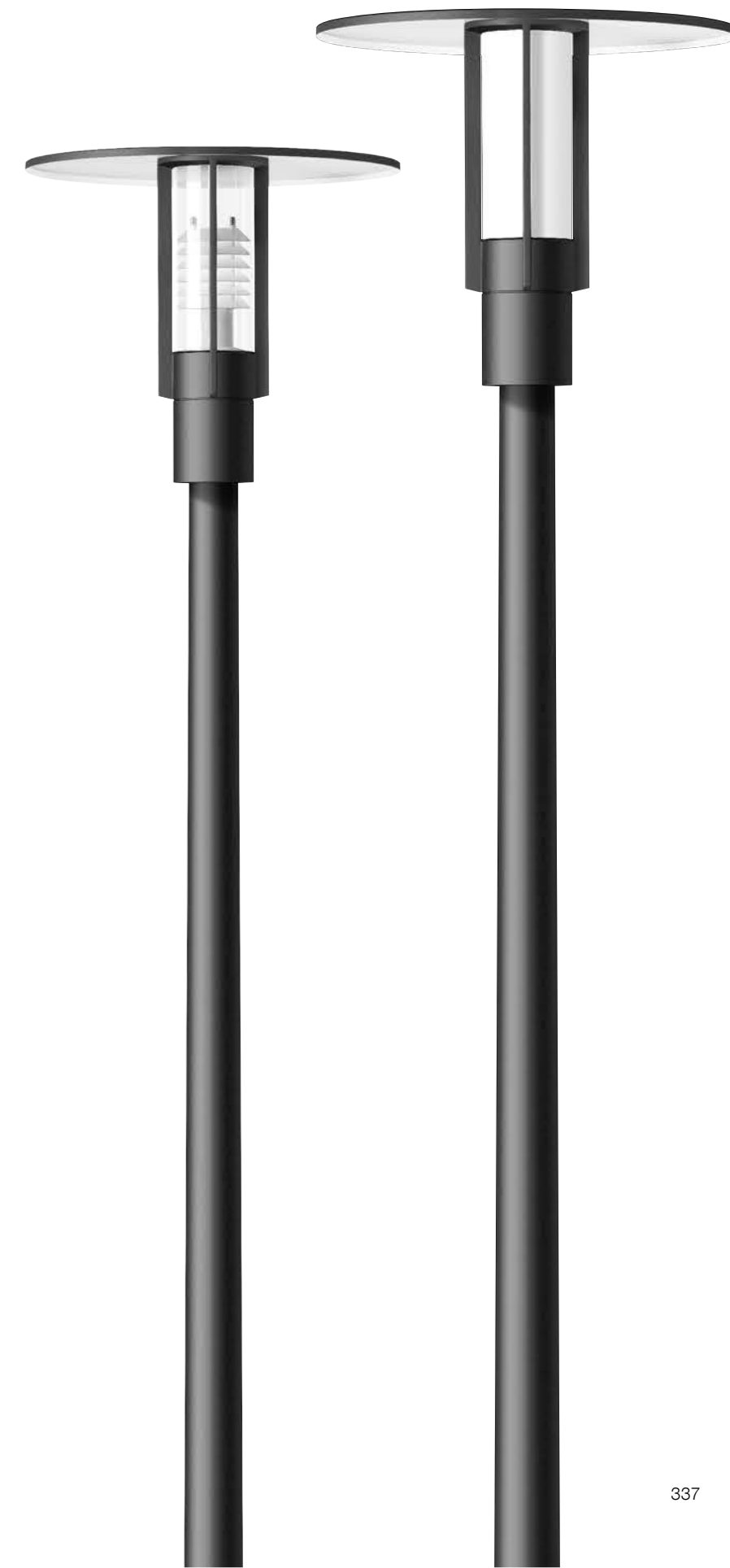
White acrylic diffuser or clear acrylic diffuser with internal reflector

LED color temperatures: 2700K, 3000K, 3500K, 4000K

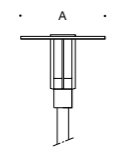
BEGA luminaires offer a minimum service life of 60,000 hours, with suitable LED replacement modules guaranteed for up to 20 years after date of purchase. Further LED technical data including luminous flux, CRI, dimming and electrical characteristics are provided on the individual luminaire specification sheets, available at www.bega-us.com

All BEGA standard finishes are matte, textured powder coat with minimum 3 mil thickness. BEGA Unidure® finish, a fluoropolymer technology, provides superior fade protection in Black, Bronze, and Silver. BEGA standard White, as well as optionally available RAL and custom colors, are a polyester powder.

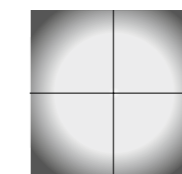
NRTL listed to North American standards · Suitable for wet locations · Protection class IP 65



Clear acrylic with reflector			
	LED	A	B
77 142	22.8 W	25%	23%



White acrylic			
	LED	A	B
77 120	22.8 W	25%	23%



Symmetric

Poles for above luminaires – see page 406 - 411.