

Wall luminaires

A series of LED wall luminaires with unshielded light distribution. These luminaires are ideally suited for illuminating entrances, arcades and walkways. Clear-cut lines and high-quality materials result in elements of architectural design that are both striking and long lasting.

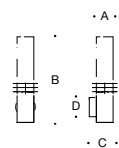
Die-cast aluminum · Three-ply opal glass

LED color temperatures: 2700 K, 3000 K, 3500 K, 4000 K

BEGA luminaires offer a minimum service life of 60,000 hours, with suitable LED replacement modules guaranteed for up to 20 years after date of purchase. Further LED technical data including luminous flux, CRI, dimming and electrical characteristics are provided on the individual luminaire specification sheets, available at www.bega-us.com

All BEGA standard finishes are matte, textured powder coat with minimum 3 mil thickness. BEGA Unidure® finish, a fluoropolymer technology, provides superior fade protection in Black.

NRTL listed to North American standards · Suitable for wet locations · Protection class IP 44



Wall luminaires					
	LED	A	B	C	D
31 074	5.3 W	3 ¼	16 ½	5 ½	3 ½
31 075	22.0 W	4 ¼	25 ¾	6 ¾	4 ¾