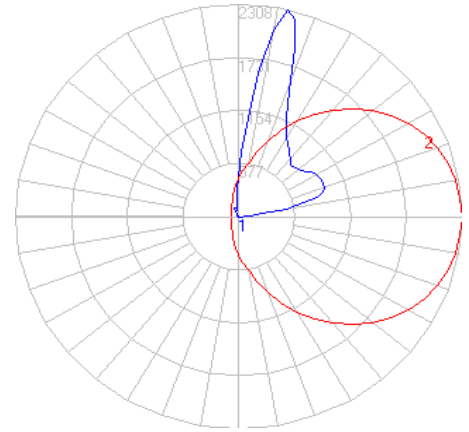
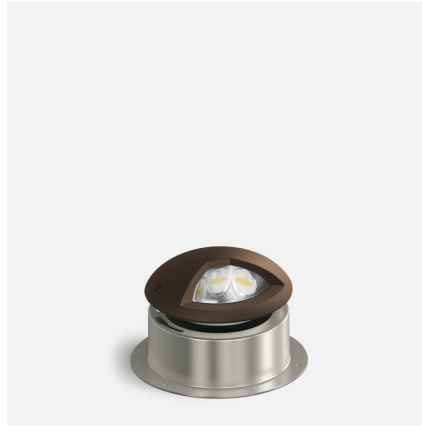


BEGA

File: 84175K4_BEGA_IES.ies

TEST: BE_84175K4
TEST LAB: BEGA
DATE: 03/28/2018
LUMINAIRE: 84 175K4
LAMP: 24.6W LED

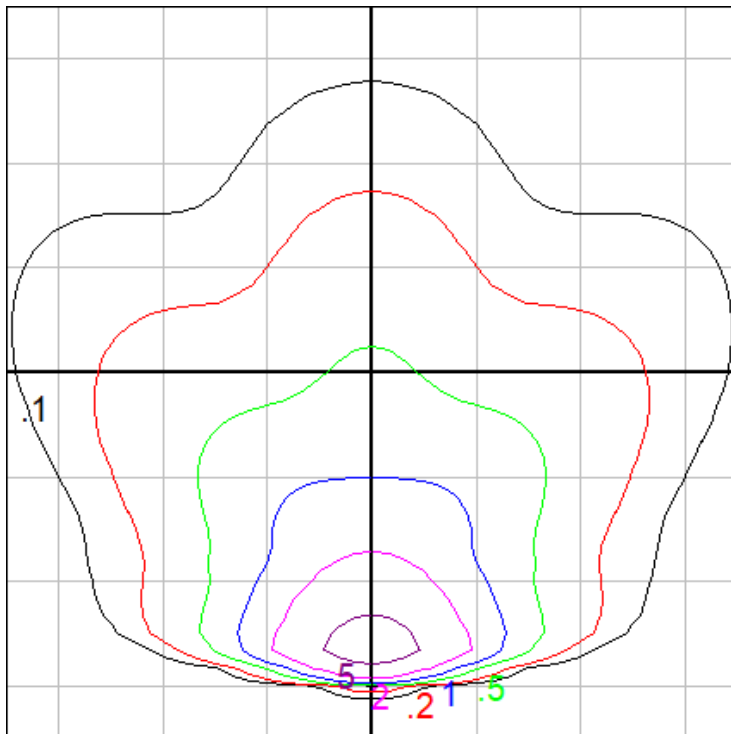


Characteristics

NEMA Type	6 H x 5 V
Maximum Candela	2292
Maximum Candela Angle	0 H -13 V
Horizontal Beam Angle (50%)	90.6
Vertical Beam Angle (50%)	20.4
Horizontal Field Angle (10%)	124.7
Vertical Field Angle (10%)	87.4
Lumens Per Lamp	N.A. (absolute)
Total Lamp Lumens	N.A. (absolute)
Beam Lumens	706
Beam Efficiency	N.A.
Field Lumens	2201
Field Efficiency	N.A.
Spill Lumens	129
Luminaire Lumens	2330
Total Efficiency	N.A.
Total Luminaire Watts	29.2
Ballast Factor	1.00

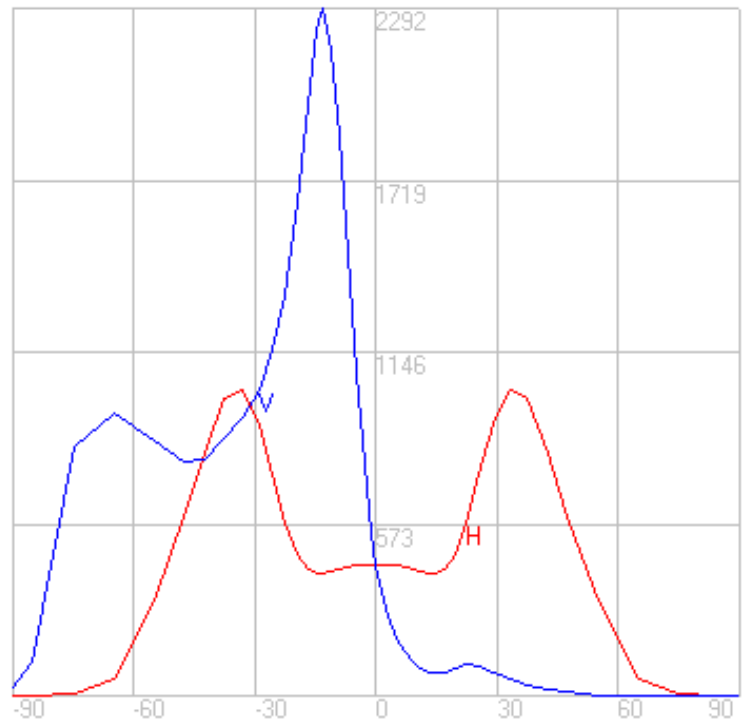
Zonal Lumen Summary

Zone	Lumens
0-10	0.00
10-20	0.00
20-30	0.00
30-40	0.00
40-50	0.00
50-60	0.00
60-70	0.00
70-80	0.06
80-90	1.83
90-100	54.57
100-110	250.67
110-120	282.54
120-130	319.43
130-140	391.12
140-150	426.38
150-160	324.52
160-170	226.21
170-180	58.95



Setback from wall: 10 ft.

Grid Spacing: 10 ft.



In the interest of product improvement, BEGA reserves the right to make technical changes without notice.

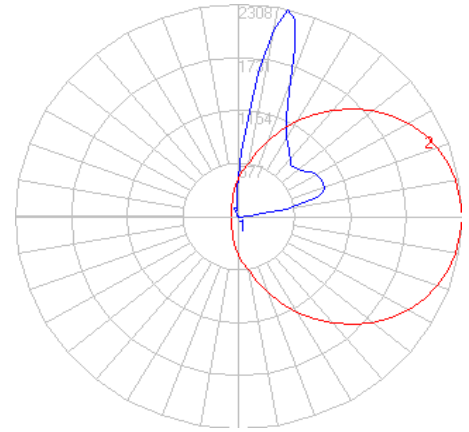
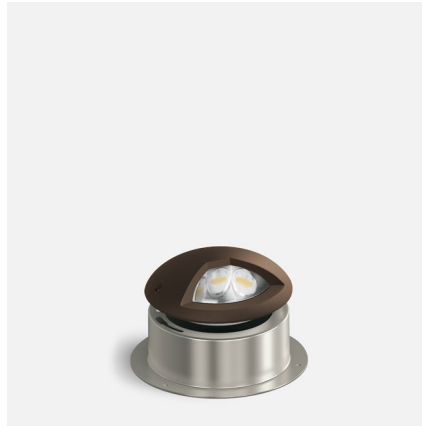
BEGA 1000 Bega Way, Carpinteria, CA 93013 (805)684-0533 Fax (805)566-9474 www.bega-us.com © Copyright BEGA-US 2020

10/14/2020

BEGA

File: 84175K35_BEGA_IES.ies

TEST: BE_84175K4
TEST LAB: BEGA
DATE: 03/28/2018
LUMINAIRE: 84 175K35
LAMP: 24.6W LED

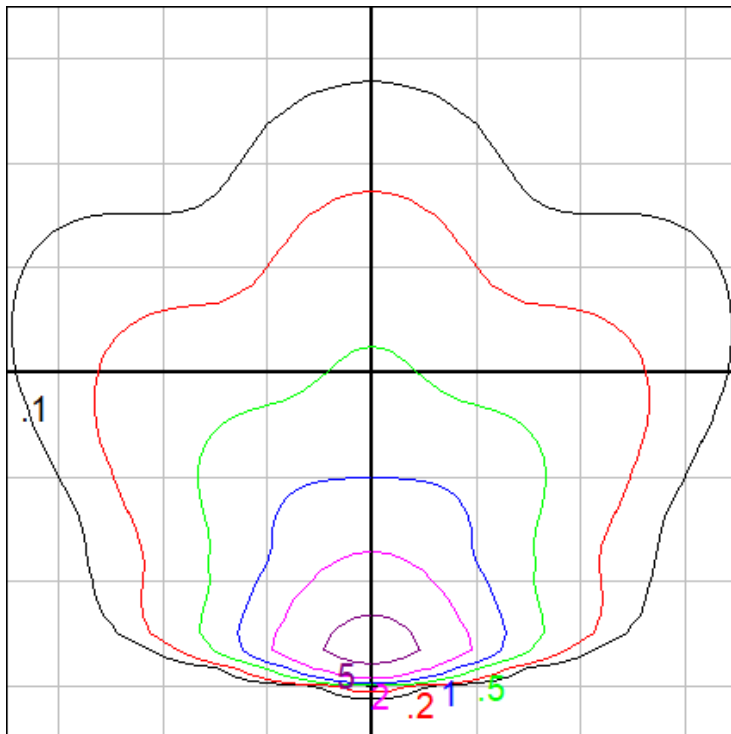


Characteristics

NEMA Type	6 H x 5 V
Maximum Candela	2292
Maximum Candela Angle	0 H -13 V
Horizontal Beam Angle (50%)	90.6
Vertical Beam Angle (50%)	20.4
Horizontal Field Angle (10%)	124.7
Vertical Field Angle (10%)	87.4
Lumens Per Lamp	N.A. (absolute)
Total Lamp Lumens	N.A. (absolute)
Beam Lumens	706
Beam Efficiency	N.A.
Field Lumens	2201
Field Efficiency	N.A.
Spill Lumens	129
Luminaire Lumens	2330
Total Efficiency	N.A.
Total Luminaire Watts	29.2
Ballast Factor	1.00

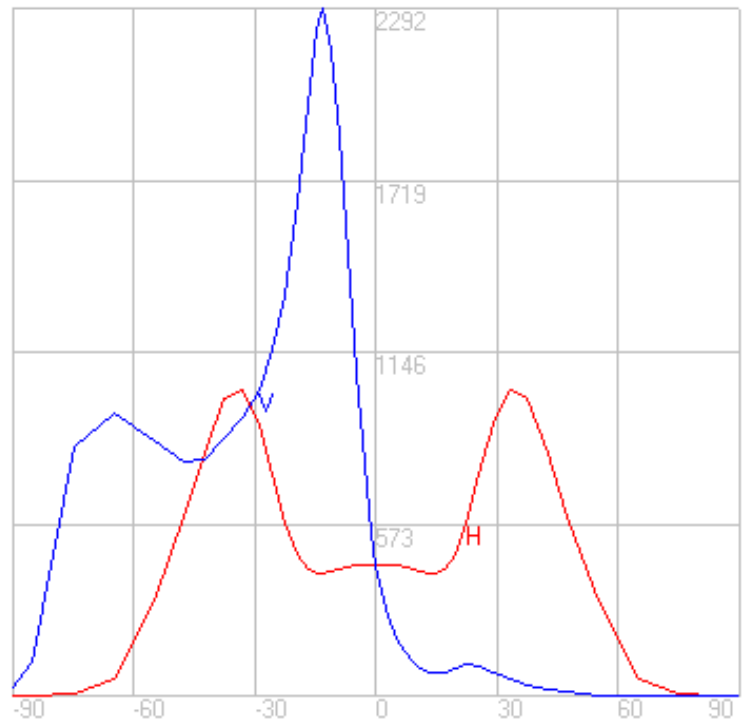
Zonal Lumen Summary

Zone	Lumens
0-10	0.00
10-20	0.00
20-30	0.00
30-40	0.00
40-50	0.00
50-60	0.00
60-70	0.00
70-80	0.06
80-90	1.83
90-100	54.57
100-110	250.67
110-120	282.54
120-130	319.43
130-140	391.12
140-150	426.38
150-160	324.52
160-170	226.21
170-180	58.95



Setback from wall: 10 ft.

Grid Spacing: 10 ft.



In the interest of product improvement, BEGA reserves the right to make technical changes without notice.

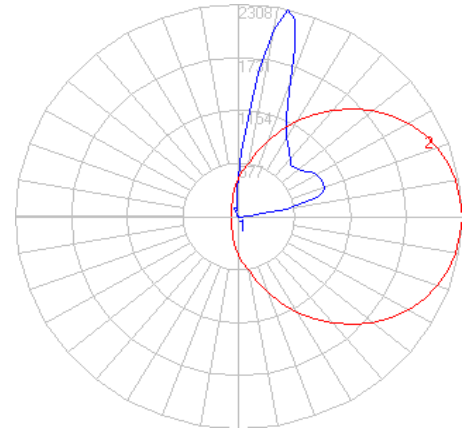
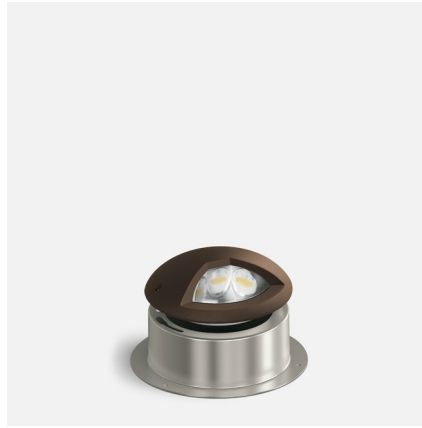
BEGA 1000 Bega Way, Carpinteria, CA 93013 (805)684-0533 Fax (805)566-9474 www.bega-us.com © Copyright BEGA-US 2020

10/14/2020

BEGA

File: 84175K3_BEGA_IES.ies

TEST: BE_84175K4
TEST LAB: BEGA
DATE: 03/28/2018
LUMINAIRE: 84 175K3
LAMP: 24.6W LED

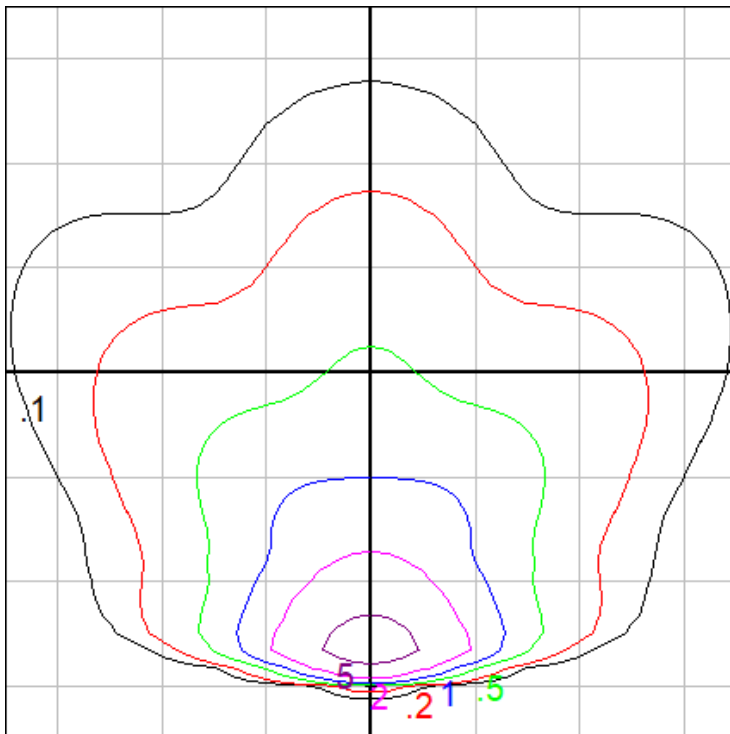


Characteristics

NEMA Type	6 H x 5 V
Maximum Candela	2292
Maximum Candela Angle	0 H -13 V
Horizontal Beam Angle (50%)	90.6
Vertical Beam Angle (50%)	20.4
Horizontal Field Angle (10%)	124.7
Vertical Field Angle (10%)	87.4
Lumens Per Lamp	N.A. (absolute)
Total Lamp Lumens	N.A. (absolute)
Beam Lumens	706
Beam Efficiency	N.A.
Field Lumens	2201
Field Efficiency	N.A.
Spill Lumens	129
Luminaire Lumens	2330
Total Efficiency	N.A.
Total Luminaire Watts	29.2
Ballast Factor	1.00

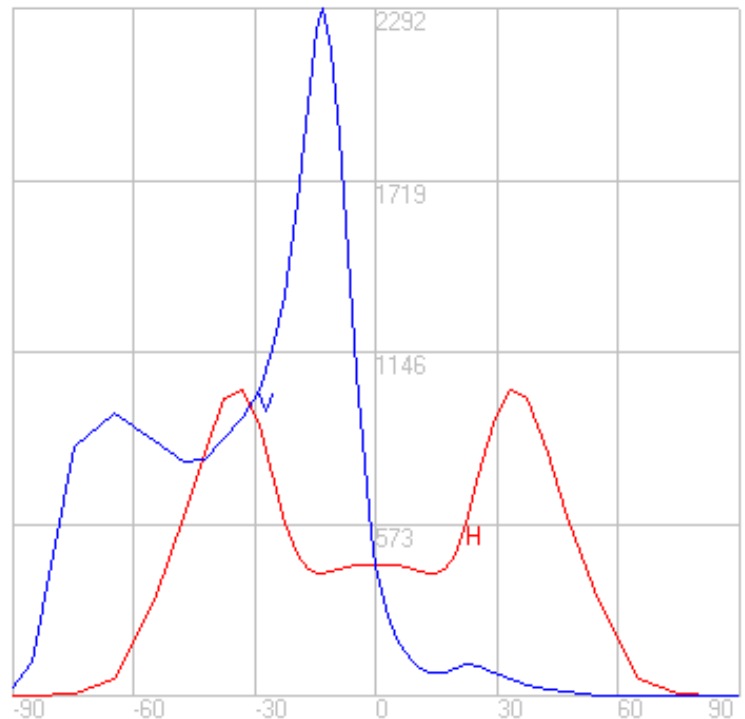
Zonal Lumen Summary

Zone	Lumens
0-10	0.00
10-20	0.00
20-30	0.00
30-40	0.00
40-50	0.00
50-60	0.00
60-70	0.00
70-80	0.06
80-90	1.83
90-100	54.57
100-110	250.67
110-120	282.54
120-130	319.43
130-140	391.12
140-150	426.38
150-160	324.52
160-170	226.21
170-180	58.95



Setback from wall: 10 ft.

Grid Spacing: 10 ft.



In the interest of product improvement, BEGA reserves the right to make technical changes without notice.

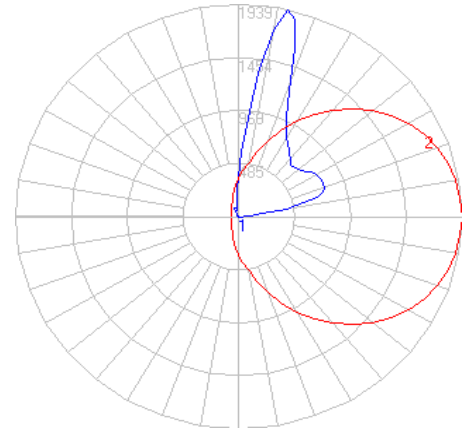
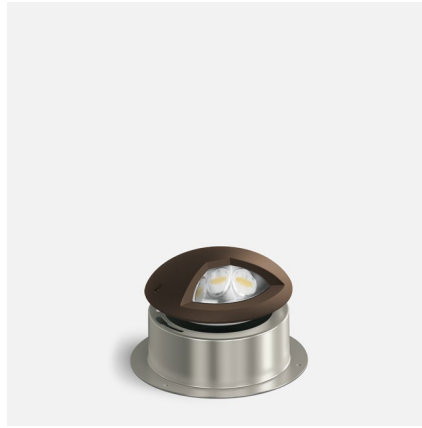
BEGA 1000 Bega Way, Carpinteria, CA 93013 (805)684-0533 Fax (805)566-9474 www.bega-us.com © Copyright BEGA-US 2020

10/14/2020

BEGA

File: 84175K27_BEGA_IES.ies

TEST: BE_84175K4
TEST LAB: BEGA
DATE: 03/28/2018
LUMINAIRE: 84 175K27
LAMP: 24.6W LED

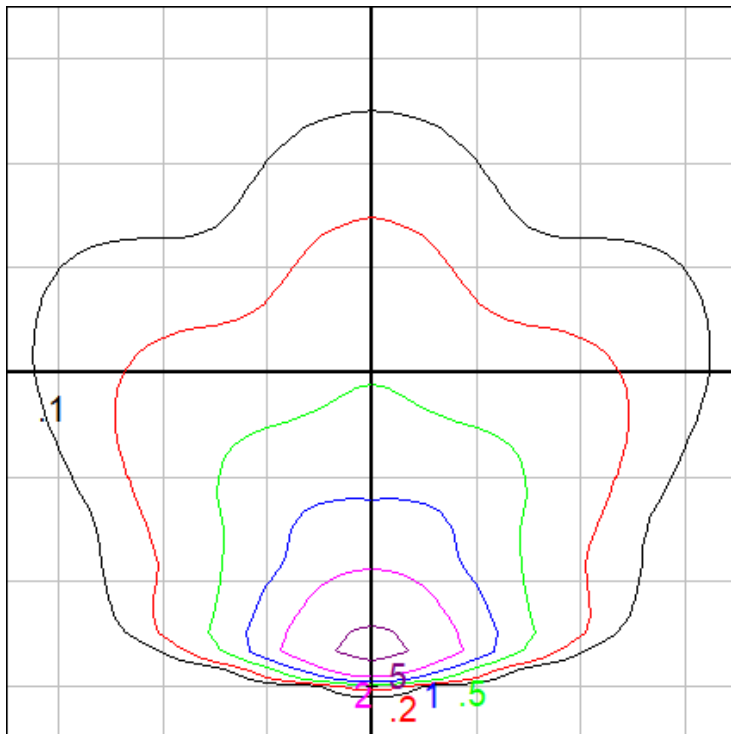


Characteristics

NEMA Type	6 H x 5 V
Maximum Candela	1925.297
Maximum Candela Angle	0 H -13 V
Horizontal Beam Angle (50%)	90.6
Vertical Beam Angle (50%)	20.4
Horizontal Field Angle (10%)	124.7
Vertical Field Angle (10%)	87.4
Lumens Per Lamp	N.A. (absolute)
Total Lamp Lumens	N.A. (absolute)
Beam Lumens	593
Beam Efficiency	N.A.
Field Lumens	1849
Field Efficiency	N.A.
Spill Lumens	108
Luminaire Lumens	1957
Total Efficiency	N.A.
Total Luminaire Watts	29.2
Ballast Factor	1.00

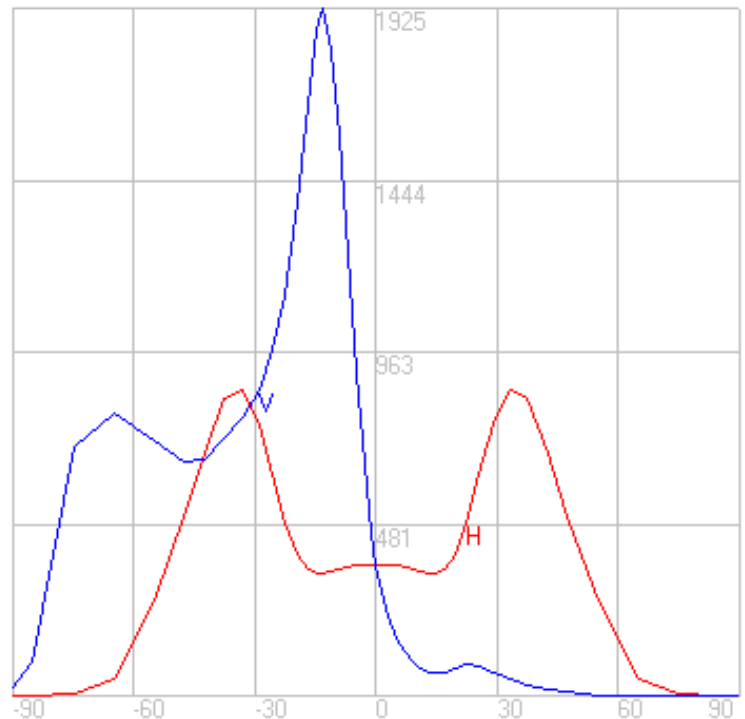
Zonal Lumen Summary

Zone	Lumens
0-10	0.00
10-20	0.00
20-30	0.00
30-40	0.00
40-50	0.00
50-60	0.00
60-70	0.00
70-80	0.05
80-90	1.54
90-100	45.84
100-110	210.57
110-120	237.34
120-130	268.33
130-140	328.54
140-150	358.16
150-160	272.60
160-170	190.01
170-180	49.52



Setback from wall: 10 ft.

Grid Spacing: 10 ft.



In the interest of product improvement, BEGA reserves the right to make technical changes without notice.

BEGA 1000 Bega Way, Carpinteria, CA 93013 (805)684-0533 Fax (805)566-9474 www.bega-us.com © Copyright BEGA-US 2020

10/14/2020