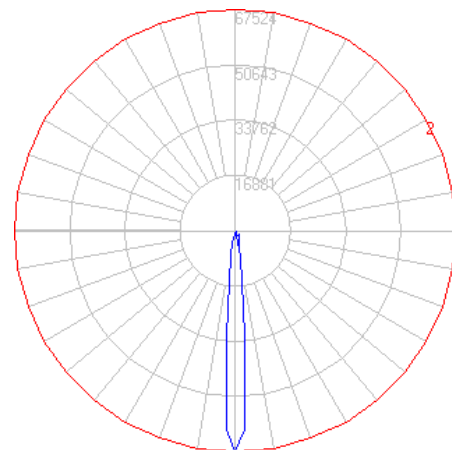


BEGA

Photometric Filename: 77639.ies

TEST: BE_77639
TEST LAB: BEGA
DATE: 6/18/2014
LUMINAIRE: 77 639
LAMP: 48.2W LED

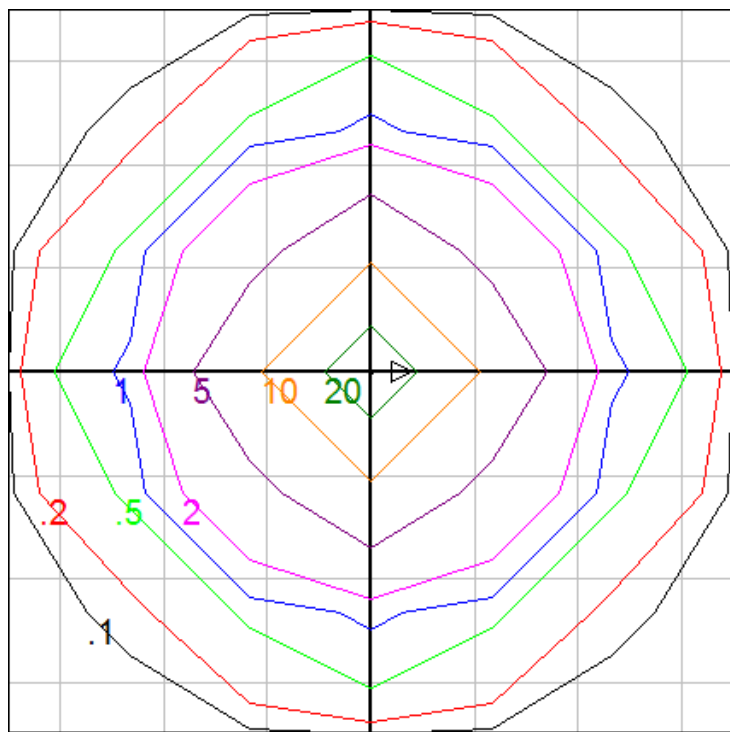


Characteristics

NEMA Type	2 H x 2 V
Maximum Candela	67523.7
Maximum Candela Angle	0 H 0 V
Horizontal Beam Angle (50%)	9.8
Vertical Beam Angle (50%)	9.8
Horizontal Field Angle (10%)	21.7
Vertical Field Angle (10%)	21.7
Lumens Per Lamp	N.A. (absolute)
Total Lamp Lumens	N.A. (absolute)
Beam Lumens	1208
Beam Efficiency	N.A.
Field Lumens	2515
Field Efficiency	N.A.
Spill Lumens	510
Luminaire Lumens	3025
Total Efficiency	N.A.
Total Luminaire Watts	54

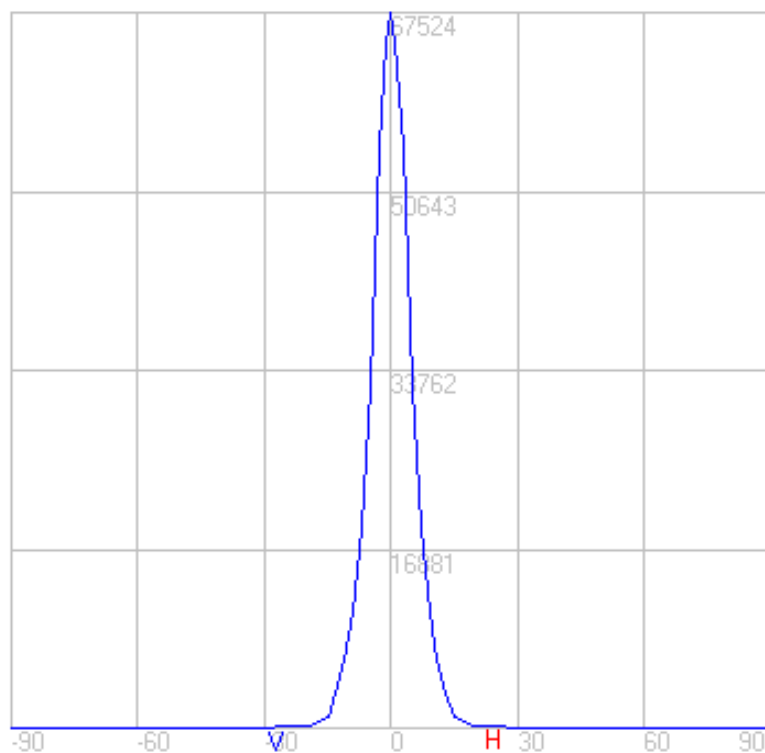
Zonal Lumen Summary

Zone	Lumens
0-10	2426.49
10-20	566.40
20-30	60.88
30-40	20.57
40-50	6.71
50-60	2.22
60-70	0.64
70-80	0.11
80-90	0.00
90-100	0.00
100-110	0.00
110-120	0.00
120-130	0.00
130-140	0.00
140-150	0.00
150-160	0.00
160-170	0.00
170-180	0.00



Setback = 50 ft.

Grid Spacing = 5 ft.



In the interest of product improvement, BEGA reserves the right to make technical changes without notice.

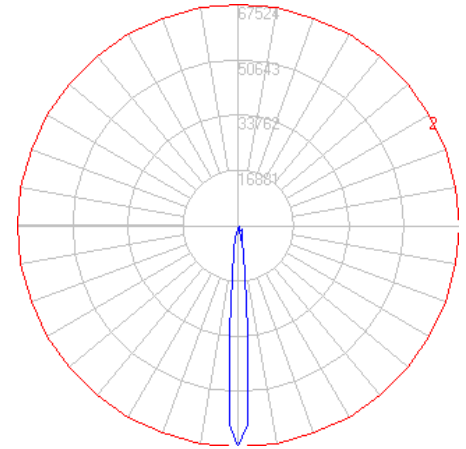
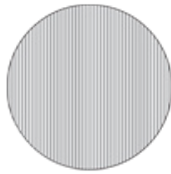
BEGA 1000 Bega Way, Carpinteria, CA 93013 (805)684-0533 Fax (805)566-9474 www.bega-us.com © Copyright BEGA-US 2017

8/16/2017

BEGA

Photometric Filename: 77639_70077.ies

TEST: BE_77639_70077
 TEST LAB: BEGA
 DATE: 6/18/2014
 LUMINAIRE: 77 639 + 70 077
 LAMP: 48.2W LED

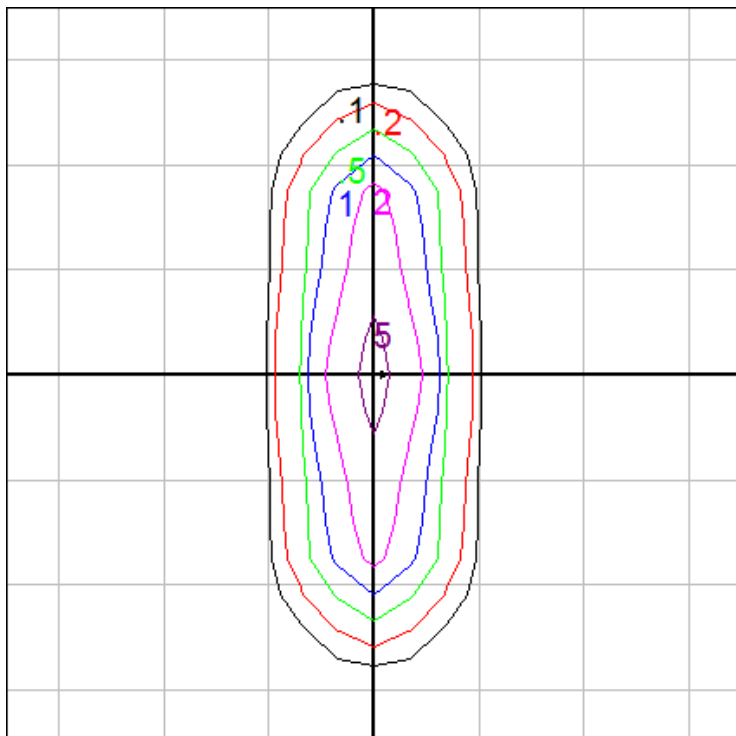


Characteristics

NEMA Type	5 H x 2 V
Maximum Candela	16846
Maximum Candela Angle	0 H 0 V
Horizontal Beam Angle (50%)	53.7
Vertical Beam Angle (50%)	9.9
Horizontal Field Angle (10%)	72.1
Vertical Field Angle (10%)	22.6
Lumens Per Lamp	N.A. (absolute)
Total Lamp Lumens	N.A. (absolute)
Beam Lumens	1109
Beam Efficiency	N.A.
Field Lumens	2463
Field Efficiency	N.A.
Spill Lumens	344
Luminaire Lumens	2808
Total Efficiency	N.A.
Total Luminaire Watts	54

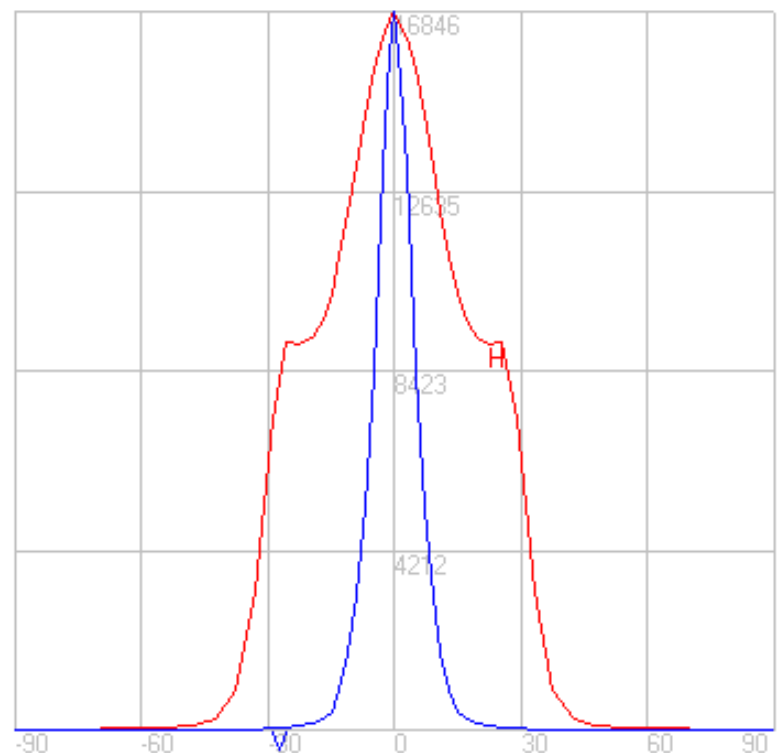
Zonal Lumen Summary

Zone	Lumens
0-10	937.47
10-20	906.53
20-30	681.13
30-40	238.31
40-50	32.55
50-60	12.16
60-70	5.90
70-80	2.38
80-90	0.35
90-100	0.00
100-110	0.00
110-120	0.00
120-130	0.00
130-140	0.00
140-150	0.00
150-160	0.00
160-170	0.00
170-180	0.00



Setback = 50 ft.

Grid Spacing = 15 ft.



In the interest of product improvement, BEGA reserves the right to make technical changes without notice.

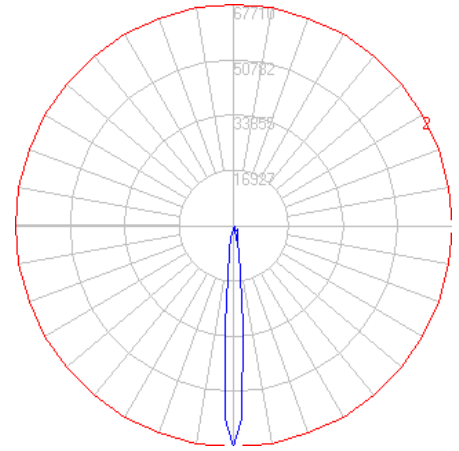
BEGA 1000 Bega Way, Carpinteria, CA 93013 (805)684-0533 Fax (805)566-9474 www.bega-us.com © Copyright BEGA-US 2017

8/16/2017

BEGA

Photometric Filename: 77639_70721.ies

TEST: BE_77639_70721
TEST LAB: BEGA
DATE: 6/18/2014
LUMINAIRE: 77 639 + 70 721
LAMP: 48.2W LED

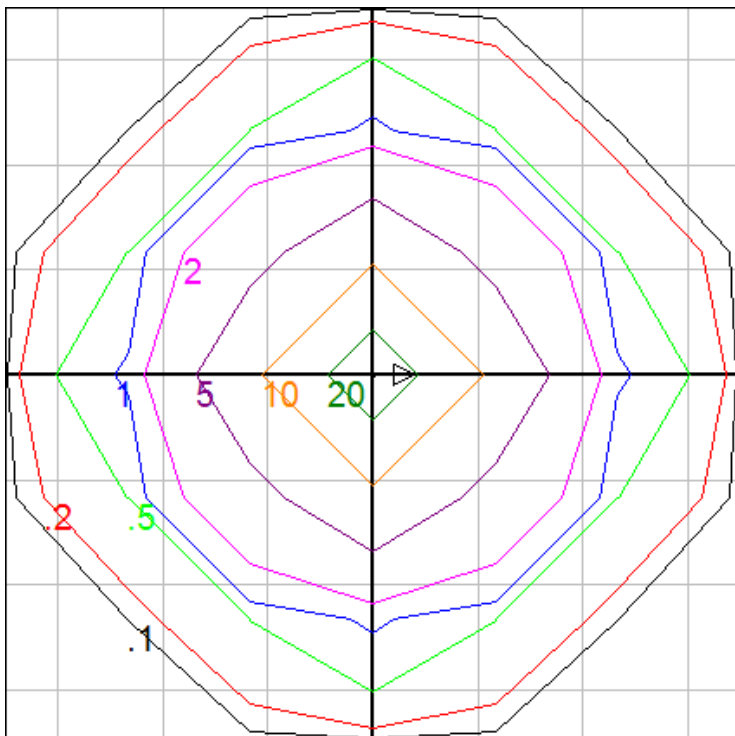


Characteristics

NEMA Type	2 H x 2 V
Maximum Candela	67709.898
Maximum Candela Angle	0 H 0 V
Horizontal Beam Angle (50%)	9.5
Vertical Beam Angle (50%)	9.5
Horizontal Field Angle (10%)	21.6
Vertical Field Angle (10%)	21.6
Lumens Per Lamp	N.A. (absolute)
Total Lamp Lumens	N.A. (absolute)
Beam Lumens	1177
Beam Efficiency	N.A.
Field Lumens	2454
Field Efficiency	N.A.
Spill Lumens	420
Luminaire Lumens	2874
Total Efficiency	N.A.
Total Luminaire Watts	54

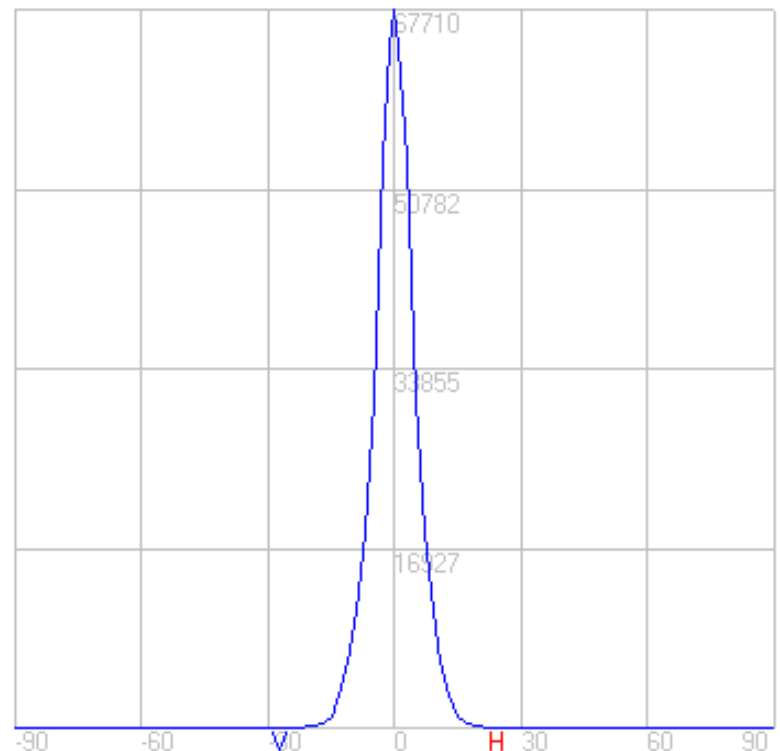
Zonal Lumen Summary

Zone	Lumens
0-10	2366.78
10-20	538.82
20-30	26.48
30-40	1.39
40-50	0.09
50-60	0.00
60-70	0.00
70-80	0.00
80-90	0.00
90-100	0.00
100-110	0.00
110-120	0.00
120-130	0.00
130-140	0.00
140-150	0.00
150-160	0.00
160-170	0.00
170-180	0.00



Setback = 50 ft.

Grid Spacing = 5 ft.



In the interest of product improvement, BEGA reserves the right to make technical changes without notice.

BEGA 1000 Bega Way, Carpinteria, CA 93013 (805)684-0533 Fax (805)566-9474 www.bega-us.com © Copyright BEGA-US 2017

8/16/2017