

Tools Required:

- Medium Phillips screwdriver
- Small Flathead screwdriver
- T10 Torx screwdriver

Overview:

LED Watts: 16.8W
 System Watts: 20.0W
 Controllability: Triac, ELV, 0-10V dimmable
 Weight: 5.7 lbs.



Dimensions

A: 6"
 B: 8-3/4"
 C: 84"



Notice to Installer:

1. See page 2 for specific product safety warnings.
2. Select the desired housing material finish by using appropriate code number as suffix.
 50 701.1 - White
 50 701.2 - Stainless steel
 50 701.3 - Chrome
3. Mounts directly onto standard recessed 4" octagonal wiring box (by others).
4. LEDs are high-quality electronic components! Please avoid touching the light output opening of the LED directly during installation.

Installation: Luminaire - Standard Canopy

1. Loosen and lower canopy cover by turning the lock screw located at the base of the canopy counter-clockwise. [Figure 1]
2. Route luminaire cable into 4" octagonal wiring box.
3. Shorten pendant cable length as needed from canopy end, see cable shortening instructions below.
4. Make pendant electrical wiring connections to supply wiring:
 MAIN VOLTAGE SUPPLY WIRE TO BLACK DRIVER WIRE(S);
 NEUTRAL (COMMON SUPPLY WIRE TO WHITE DRIVER WIRE(S);
 GREEN GROUND WIRE TO GREEN DRIVER WIRE(S).
 Dimming (if applicable):
 DIMMING CONTROL WIRE (+) TO POSITIVE DRIVER DIM CONTROL WIRE
 DIMMING CONTROL WIRE (-) TO NEGATIVE DRIVER DIM CONTROL WIRE
5. Attach canopy mounting kit onto 4" octagonal wiring box using [2] Phillips screws. [Figure 2]
6. Reattached canopy cover by turning lock screw clockwise while pressing canopy cover firmly to base. [Figure 3 & 4]

Installation: Luminaire - Cable Shortening (as needed)

1. Cable can be shortened on canopy side only.
2. Shut off power to luminaire.
3. Undo wiring splices, detach the ground wire.
4. Remove aircraft cable from safety catch by loosening screw and unthreading cable.
5. Cut luminaire wires and aircraft suspension cable to desired length leaving excess aircraft cable to reroute through safety catch.
6. Feed aircraft cable back through safety catch making sure to complete one full loop and tighten locking screw. [Figure 5]
7. Reconnect electrical wires and ground wire making sure all tension is being put on aircraft cable.
8. See *Installation: Luminaire - Standard Canopy* section above for completing installation.

WARNING:

FAILURE TO FOLLOW THESE INSTALLATION INSTRUCTIONS CAN CAUSE FIXTURE TO FAIL. DO NOT SHORTEN THE CABLE ON THE FIXTURE SIDE. DO NOT REMOVE OR TAMPER WITH SAFETY HARDWARE ON FIXTURE SIDE.

Accessories

Please refer to the appropriate accessory installation sheet for further instruction when applicable.

Maintenance:

Clean regularly with solvent-free cleaner removing dust and debris.

Replacement Parts

See label inside of fixture for LED replacement part number.

Consult factory for all other replacement components.

(Generic Models)

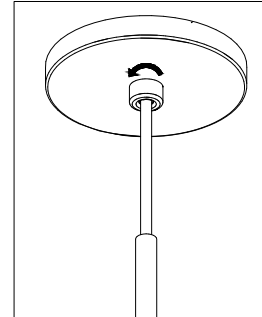


Figure 1: Canopy Removal

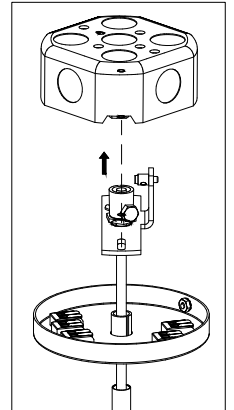


Figure 2: Base Mounting [1/2]

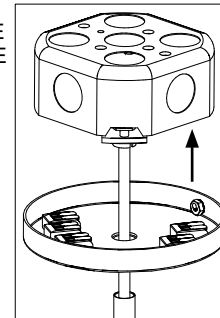


Figure 3: Base Mounting [2/2]

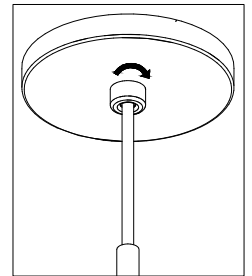


Figure 4: Canopy Mounting

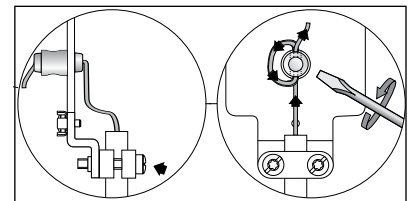


Figure 5: Aircraft cable shortening

Product Safety Warnings:

THIS PRODUCT MUST BE INSTALLED IN ACCORDANCE WITH THE APPLICABLE INSTALLATION CODE BY A PERSON FAMILIAR WITH THE CONSTRUCTION AND OPERATION OF THE PRODUCT AND THE HAZARDS INVOLVED. SUITABLE FOR DAMP LOCATIONS. MIN 90°C SUPPLY CONDUCTORS.

CE PRODUIT DOIT ÊTRE INSTALLÉ SELON LE CODE D'INSTALLATION PERTINENT, PAR UNE PERSONNE QUI CONNAÎT BIEN LE PRODUIT ET SON FONCTIONNEMENT AINSI QUE LES RISQUES INHÉRENTS. CONVIENT AUX EMPLACEMENTS HUMIDE.

LES FILS D'ALIMENTATION 90°C MIN.