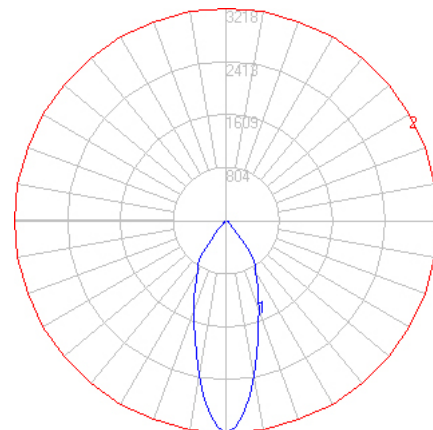
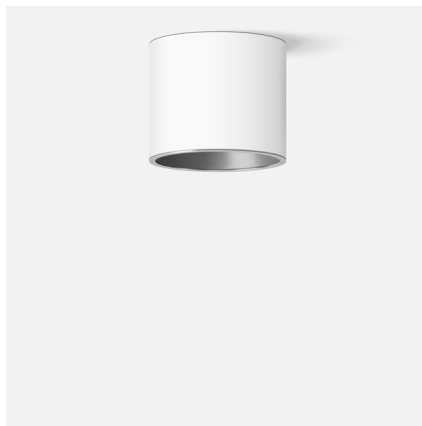


BEGA

File: 50679.2K4_BEGA_IES.ies

TEST: BE_50679.2K3
TEST LAB: BEGA
DATE: 11/29/2018
LUMINAIRE: 50 679.2K4
LAMP: 17.0W LED

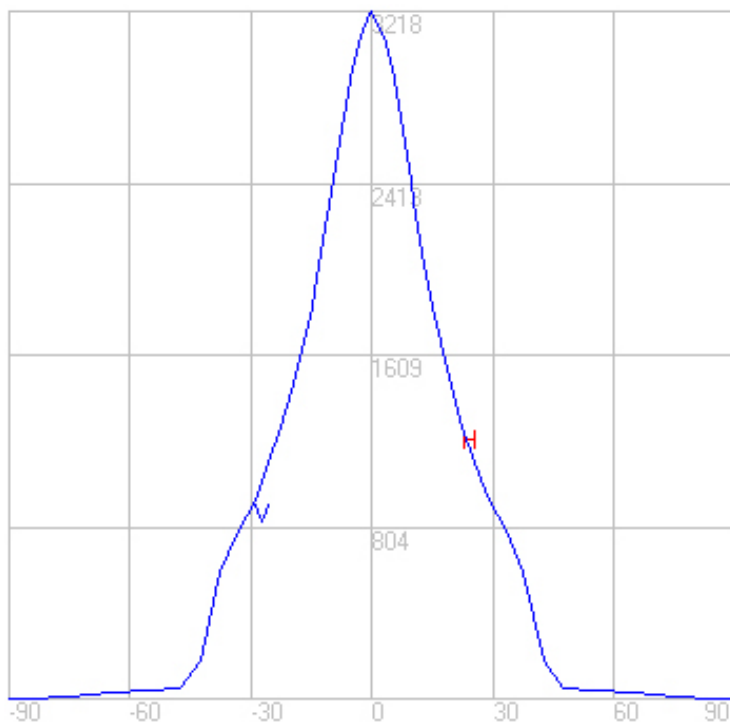
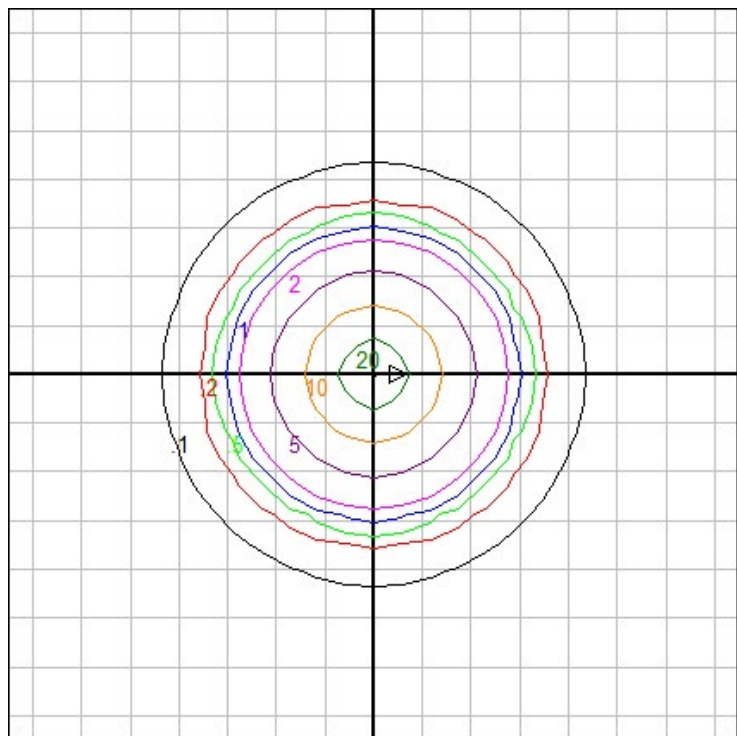


Characteristics

Lumens Per Lamp	N.A. (absolute)
Total Lamp Lumens	N.A. (absolute)
Luminaire Lumens	1903
Total Luminaire Efficiency	N.A.
Luminaire Efficacy Rating (LER)	95
Total Luminaire Watts	20
Ballast Factor	1.00
CIE Type	Direct
Spacing Criterion (0-180)	0.56
Spacing Criterion (90-270)	0.56
Spacing Criterion (Diagonal)	0.68
Basic Luminous Shape	Circular
Luminous Length (0-180)	0.00 ft
Luminous Width (90-270)	0.52 ft (Diameter)
Luminous Height	0.00 ft

Zonal Lumen Summary

Zone	Lumens
0-10	262.92
10-20	515.21
20-30	520.05
30-40	427.11
40-50	96.37
50-60	35.80
60-70	28.52
70-80	14.09
80-90	2.48
90-100	0.00
100-110	0.00
110-120	0.00
120-130	0.00
130-140	0.00
140-150	0.00
150-160	0.00
160-170	0.00
170-180	0.00



Mounting Height: 10 ft.

Grid Spacing: 3 ft.

In the interest of product improvement, BEGA reserves the right to make technical changes without notice.

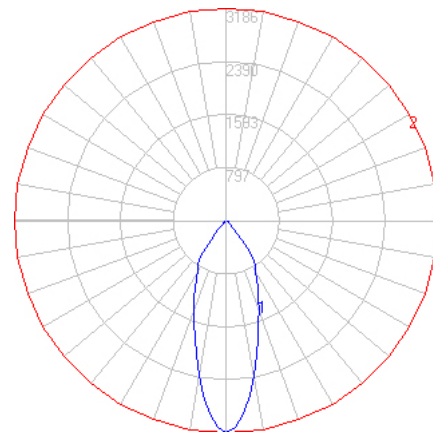
BEGA 1000 Bega Way, Carpinteria, CA 93013 (805)684-0533 Fax (805)566-9474 www.bega-us.com © Copyright BEGA-US 2020

07/30/20

BEGA

File: 50679.2K35_BEGA_IES.ies

TEST: BE_50679.2K3
 TEST LAB: BEGA
 DATE: 11/29/2018
 LUMINAIRE: 50 679.2K35
 LAMP: 17.0W LED

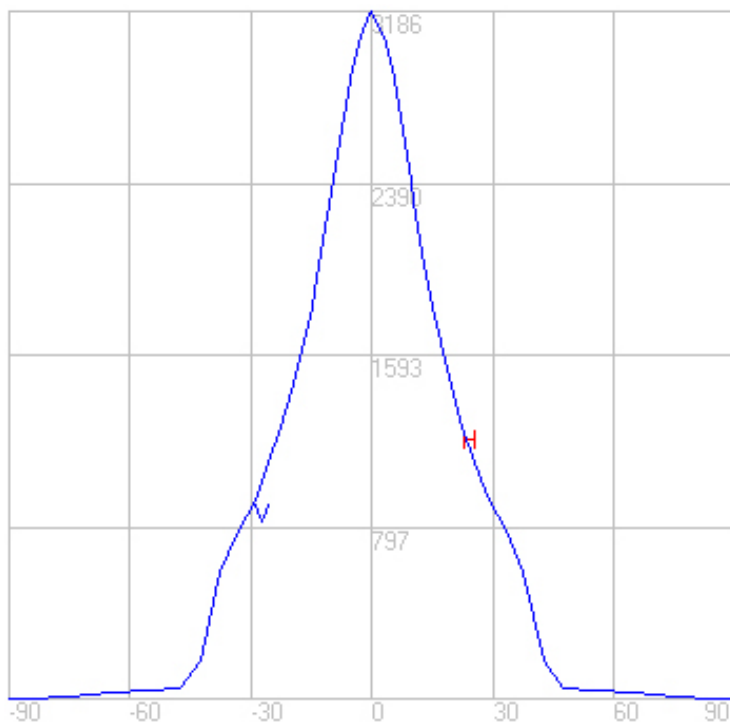
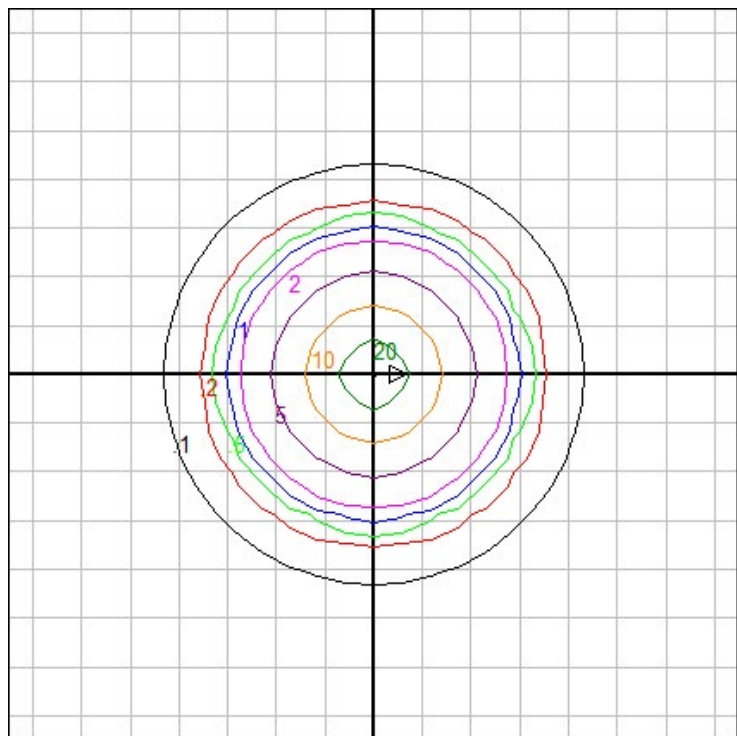


Characteristics

Lumens Per Lamp	N.A. (absolute)
Total Lamp Lumens	N.A. (absolute)
Luminaire Lumens	1884
Total Luminaire Efficiency	N.A.
Luminaire Efficacy Rating (LER)	94
Total Luminaire Watts	20
Ballast Factor	1.00
CIE Type	Direct
Spacing Criterion (0-180)	0.56
Spacing Criterion (90-270)	0.56
Spacing Criterion (Diagonal)	0.68
Basic Luminous Shape	Circular
Luminous Length (0-180)	0.00 ft
Luminous Width (90-270)	0.52 ft (Diameter)
Luminous Height	0.00 ft

Zonal Lumen Summary

Zone	Lumens
0-10	260.34
10-20	510.16
20-30	514.96
30-40	422.93
40-50	95.42
50-60	35.45
60-70	28.24
70-80	13.95
80-90	2.46
90-100	0.00
100-110	0.00
110-120	0.00
120-130	0.00
130-140	0.00
140-150	0.00
150-160	0.00
160-170	0.00
170-180	0.00



Mounting Height: 10 ft.

Grid Spacing: 3 ft.

In the interest of product improvement, BEGA reserves the right to make technical changes without notice.

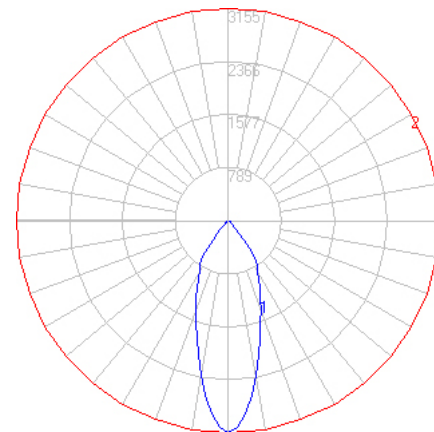
BEGA 1000 Bega Way, Carpinteria, CA 93013 (805)684-0533 Fax (805)566-9474 www.bega-us.com © Copyright BEGA-US 2020

07/30/20

BEGA

File: 50679.2K3_BEGA_IES.ies

TEST: BE_50679.2K3
TEST LAB: BEGA
DATE: 11/29/2018
LUMINAIRE: 50 679.2K3
LAMP: 17.0W LED

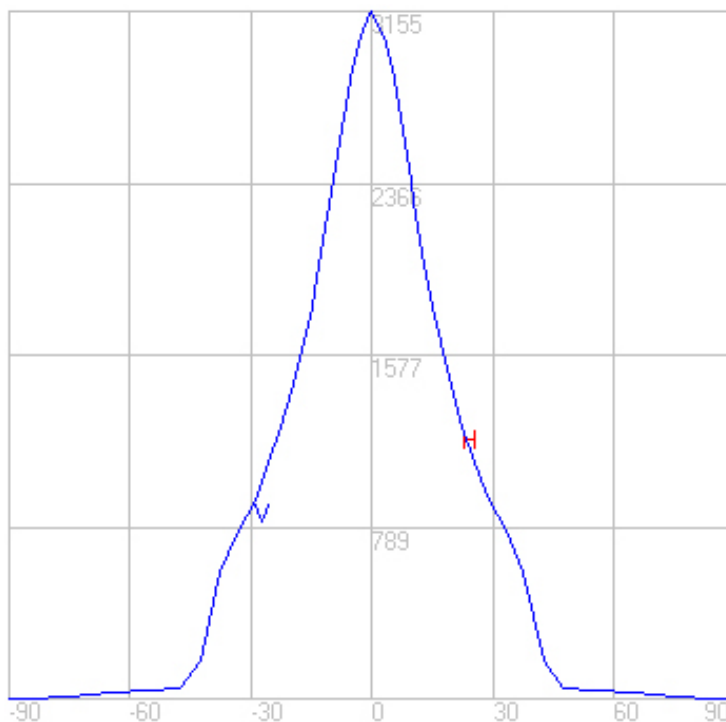
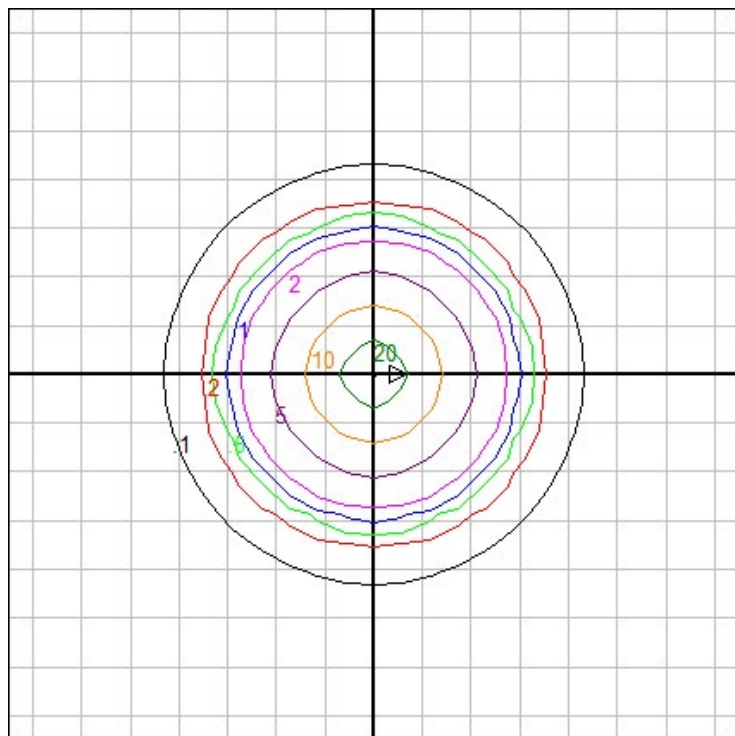


Characteristics

Lumens Per Lamp	N.A. (absolute)
Total Lamp Lumens	N.A. (absolute)
Luminaire Lumens	1865
Total Luminaire Efficiency	N.A.
Luminaire Efficacy Rating (LER)	93
Total Luminaire Watts	20
Ballast Factor	1.00
CIE Type	Direct
Spacing Criterion (0-180)	0.56
Spacing Criterion (90-270)	0.56
Spacing Criterion (Diagonal)	0.68
Basic Luminous Shape	Circular
Luminous Length (0-180)	0.00 ft
Luminous Width (90-270)	0.52 ft (Diameter)
Luminous Height	0.00 ft

Zonal Lumen Summary

Zone	Lumens
0-10	257.76
10-20	505.10
20-30	509.86
30-40	418.74
40-50	94.48
50-60	35.10
60-70	27.96
70-80	13.81
80-90	2.43
90-100	0.00
100-110	0.00
110-120	0.00
120-130	0.00
130-140	0.00
140-150	0.00
150-160	0.00
160-170	0.00
170-180	0.00



Mounting Height: 10 ft.

Grid Spacing: 3 ft.

In the interest of product improvement, BEGA reserves the right to make technical changes without notice.

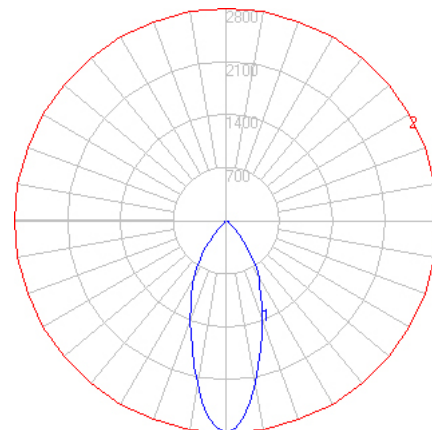
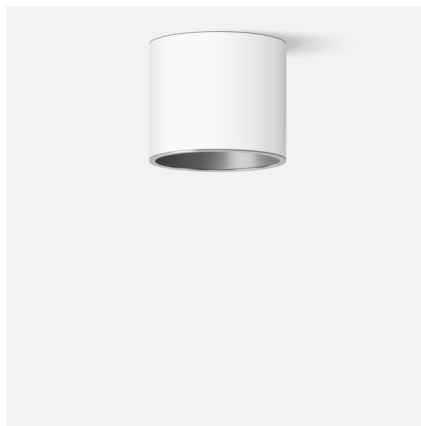
BEGA 1000 Bega Way, Carpinteria, CA 93013 (805)684-0533 Fax (805)566-9474 www.bega-us.com © Copyright BEGA-US 2020

07/30/20

BEGA

File: 50679.2K27_BEGA_IES.ies

TEST: BE_50679.2K3
 TEST LAB: BEGA
 DATE: 11/29/2018
 LUMINAIRE: 50 679.2K27
 LAMP: 17.0W LED

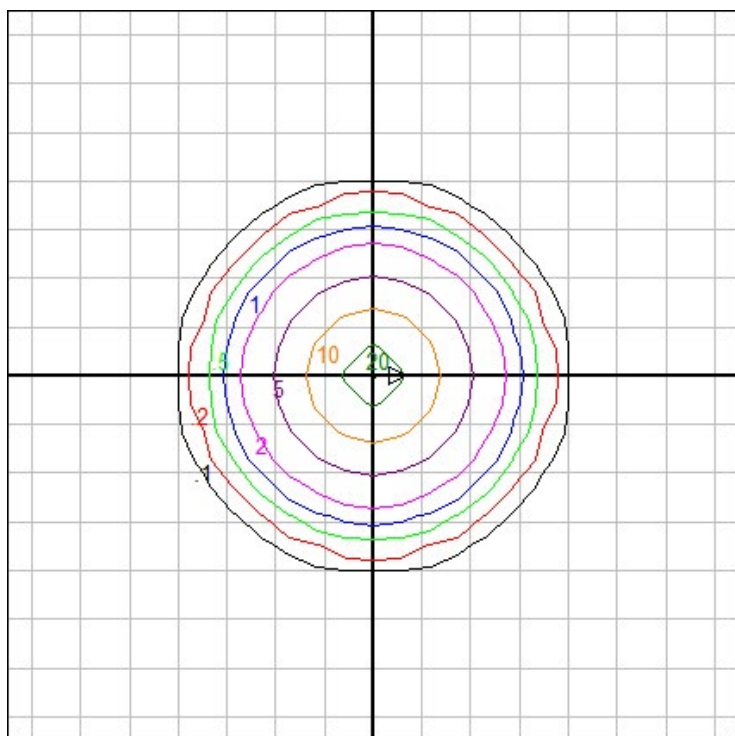


Characteristics

Lumens Per Lamp	N.A. (absolute)
Total Lamp Lumens	N.A. (absolute)
Luminaire Lumens	1791
Total Luminaire Efficiency	N.A.
Luminaire Efficacy Rating (LER)	90
Total Luminaire Watts	20
Ballast Factor	1.00
CIE Type	Direct
Spacing Criterion (0-180)	0.56
Spacing Criterion (90-270)	0.56
Spacing Criterion (Diagonal)	0.68
Basic Luminous Shape	Circular
Luminous Length (0-180)	0.00 ft
Luminous Width (90-270)	0.52 ft (Diameter)
Luminous Height	0.00 ft

Zonal Lumen Summary

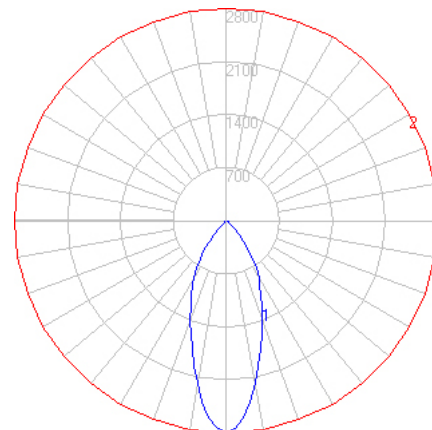
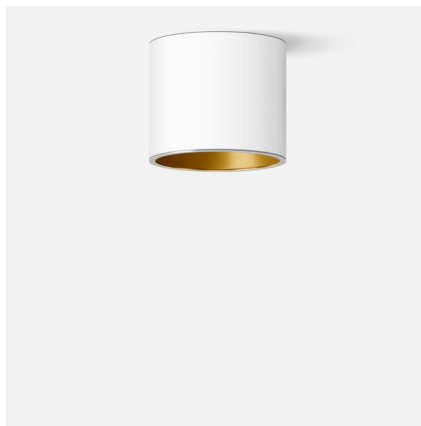
Zone	Lumens
0-10	235.91
10-20	489.40
20-30	502.54
30-40	375.13
40-50	119.46
50-60	24.24
60-70	15.29
70-80	6.11
80-90	1.07
90-100	0.00
100-110	0.00
110-120	0.00
120-130	0.00
130-140	0.00
140-150	0.00
150-160	0.00
160-170	0.00
170-180	0.00



BEGA

File: 50679.4K4_BEGA_IES.ies

TEST: BE_50679.4K3
TEST LAB: BEGA
DATE: 11/29/2018
LUMINAIRE: 50 679.4K4
LAMP: 17.0W LED

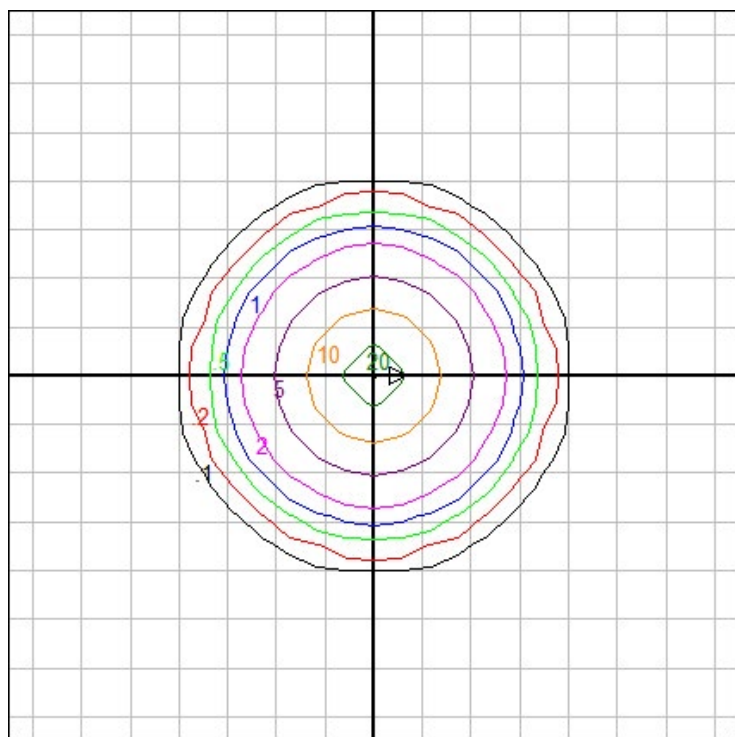


Characteristics

Lumens Per Lamp	N.A. (absolute)
Total Lamp Lumens	N.A. (absolute)
Luminaire Lumens	1769
Total Luminaire Efficiency	N.A.
Luminaire Efficacy Rating (LER)	88
Total Luminaire Watts	20
Ballast Factor	1.00
CIE Type	Direct
Spacing Criterion (0-180)	0.62
Spacing Criterion (90-270)	0.62
Spacing Criterion (Diagonal)	0.72
Basic Luminous Shape	Circular
Luminous Length (0-180)	0.00 ft
Luminous Width (90-270)	0.52 ft (Diameter)
Luminous Height	0.00 ft

Zonal Lumen Summary

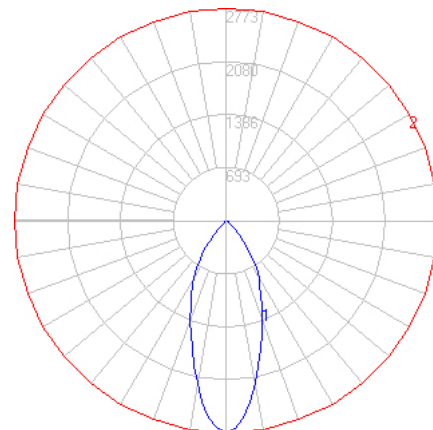
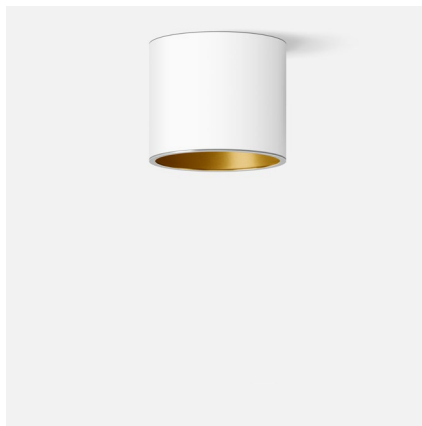
Zone	Lumens
0-10	235.91
10-20	489.40
20-30	502.54
30-40	375.13
40-50	119.46
50-60	24.24
60-70	15.29
70-80	6.11
80-90	1.07
90-100	0.00
100-110	0.00
110-120	0.00
120-130	0.00
130-140	0.00
140-150	0.00
150-160	0.00
160-170	0.00
170-180	0.00



BEGA

File: 50679.4K35_BEGA_IES.ies

TEST: BE_50679.4K3
 TEST LAB: BEGA
 DATE: 11/29/2018
 LUMINAIRE: 50 679.4K35
 LAMP: 17.0W LED

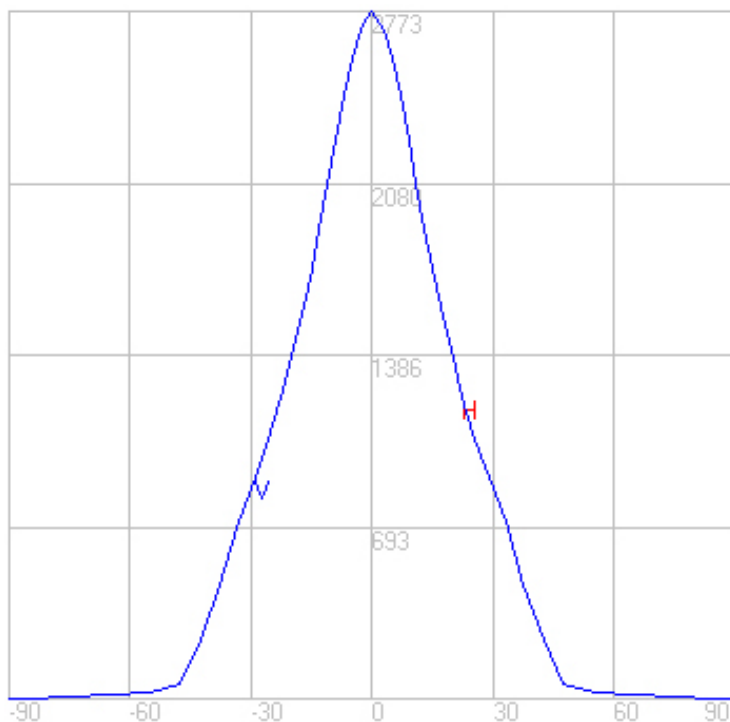
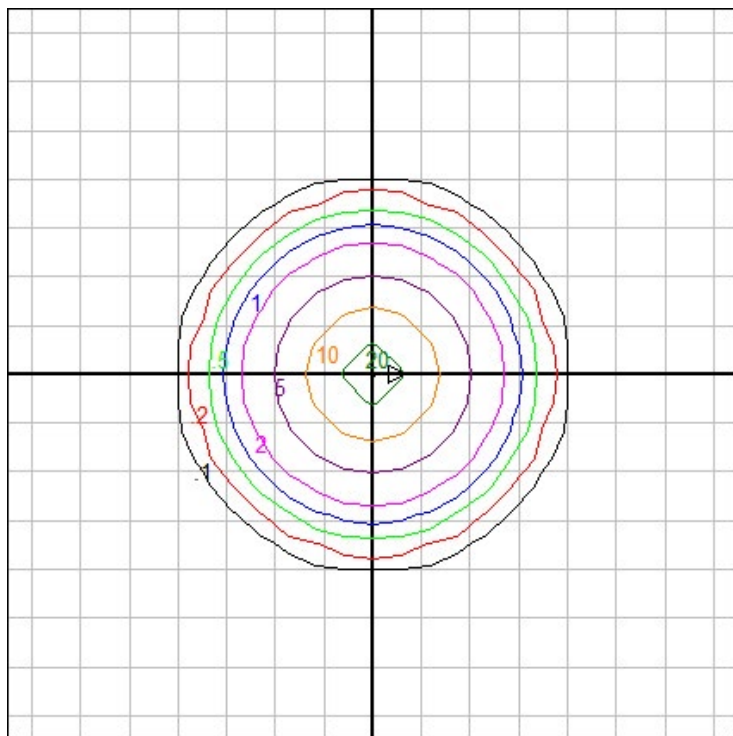


Characteristics

Lumens Per Lamp	N.A. (absolute)
Total Lamp Lumens	N.A. (absolute)
Luminaire Lumens	1752
Total Luminaire Efficiency	N.A.
Luminaire Efficacy Rating (LER)	88
Total Luminaire Watts	20
Ballast Factor	1.00
CIE Type	Direct
Spacing Criterion (0-180)	0.62
Spacing Criterion (90-270)	0.62
Spacing Criterion (Diagonal)	0.72
Basic Luminous Shape	Circular
Luminous Length (0-180)	0.00 ft
Luminous Width (90-270)	0.52 ft (Diameter)
Luminous Height	0.00 ft

Zonal Lumen Summary

Zone	Lumens
0-10	233.60
10-20	484.61
20-30	497.61
30-40	371.45
40-50	118.28
50-60	24.00
60-70	15.14
70-80	6.05
80-90	1.06
90-100	0.00
100-110	0.00
110-120	0.00
120-130	0.00
130-140	0.00
140-150	0.00
150-160	0.00
160-170	0.00
170-180	0.00



Mounting Height: 10 ft.

Grid Spacing: 3 ft.

In the interest of product improvement, BEGA reserves the right to make technical changes without notice.

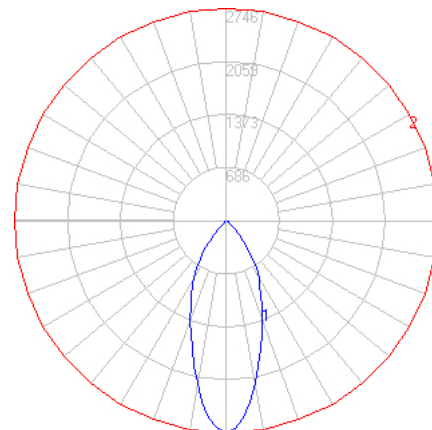
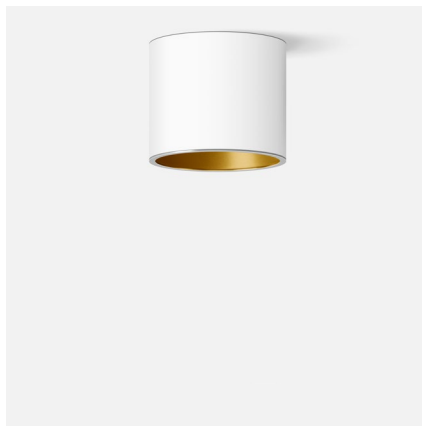
BEGA 1000 Bega Way, Carpinteria, CA 93013 (805)684-0533 Fax (805)566-9474 www.bega-us.com © Copyright BEGA-US 2020

07/30/20

BEGA

File: 50679.4K3_BEGA_IES.ies

TEST: BE_50679.4K3
TEST LAB: BEGA
DATE: 11/29/2018
LUMINAIRE: 50 679.4K3
LAMP: 17.0W LED

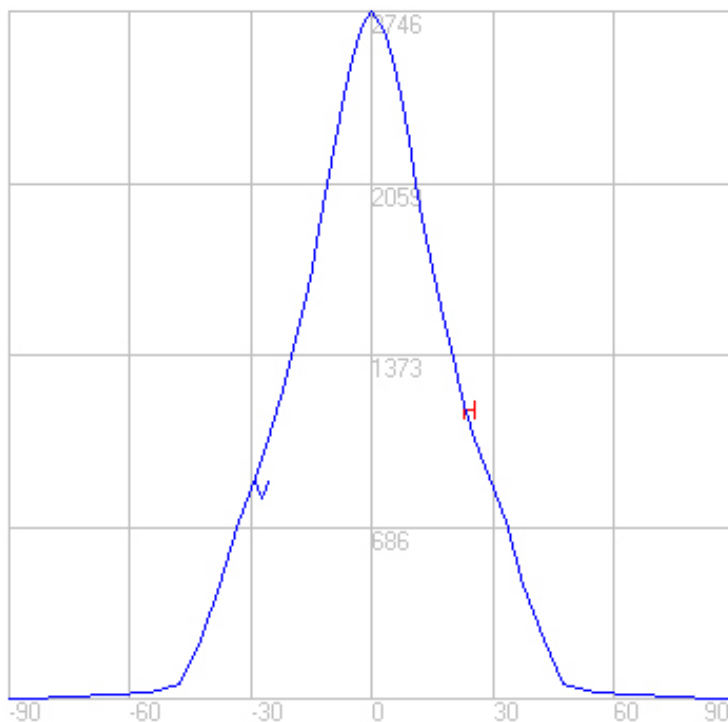
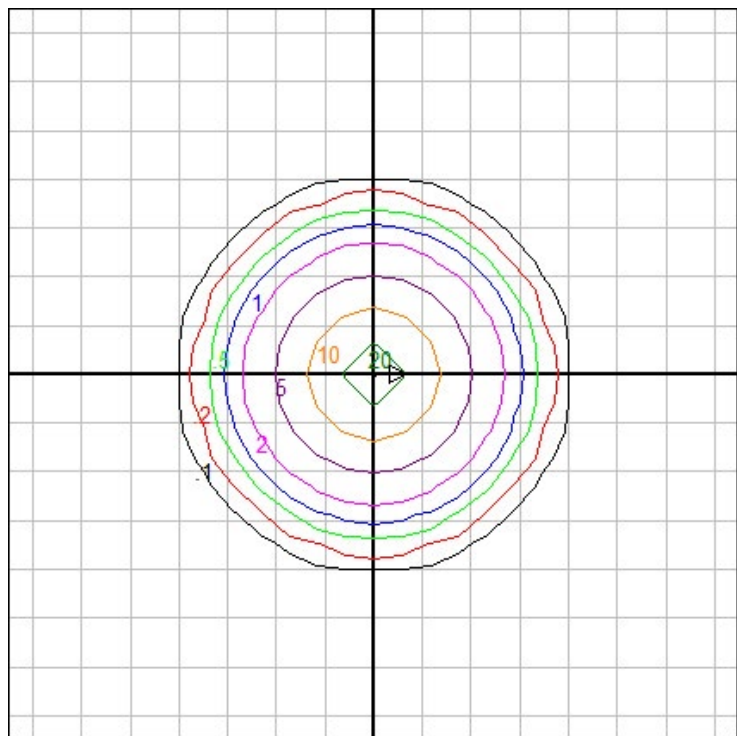


Characteristics

Lumens Per Lamp	N.A. (absolute)
Total Lamp Lumens	N.A. (absolute)
Luminaire Lumens	1734
Total Luminaire Efficiency	N.A.
Luminaire Efficacy Rating (LER)	87
Total Luminaire Watts	20
Ballast Factor	1.00
CIE Type	Direct
Spacing Criterion (0-180)	0.62
Spacing Criterion (90-270)	0.62
Spacing Criterion (Diagonal)	0.72
Basic Luminous Shape	Circular
Luminous Length (0-180)	0.00 ft
Luminous Width (90-270)	0.52 ft (Diameter)
Luminous Height	0.00 ft

Zonal Lumen Summary

Zone	Lumens
0-10	231.29
10-20	479.81
20-30	492.68
30-40	367.78
40-50	117.11
50-60	23.76
60-70	14.99
70-80	5.99
80-90	1.05
90-100	0.00
100-110	0.00
110-120	0.00
120-130	0.00
130-140	0.00
140-150	0.00
150-160	0.00
160-170	0.00
170-180	0.00



Mounting Height: 10 ft.

Grid Spacing: 3 ft.

In the interest of product improvement, BEGA reserves the right to make technical changes without notice.

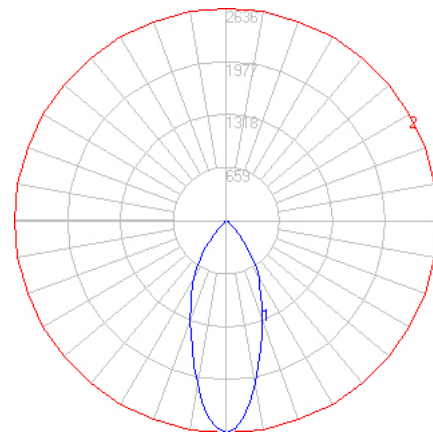
BEGA 1000 Bega Way, Carpinteria, CA 93013 (805)684-0533 Fax (805)566-9474 www.bega-us.com © Copyright BEGA-US 2020

07/30/20

BEGA

File: 50679.4K27_BEGA_IES.ies

TEST: BE_50679.4K3
 TEST LAB: BEGA
 DATE: 11/29/2018
 LUMINAIRE: 50 679.4K27
 LAMP: 17.0W LED

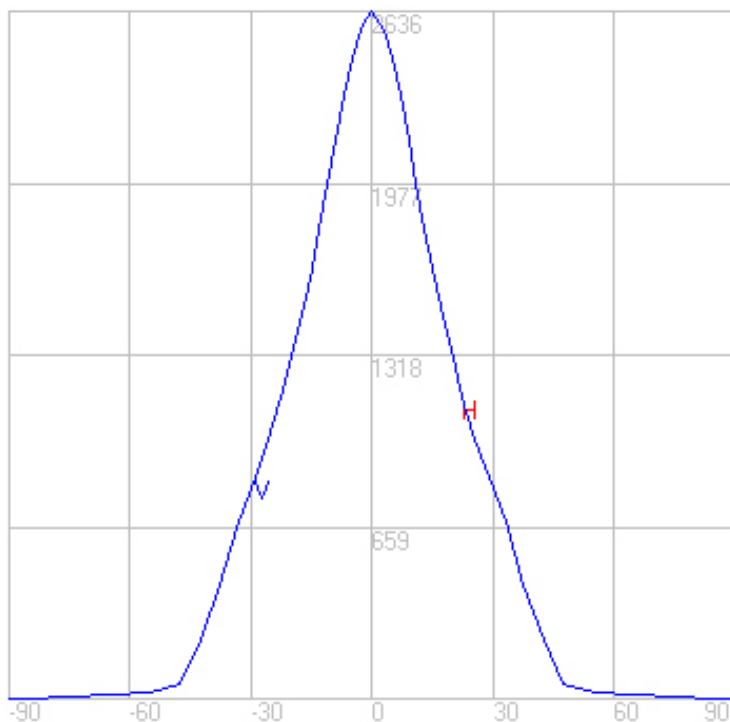
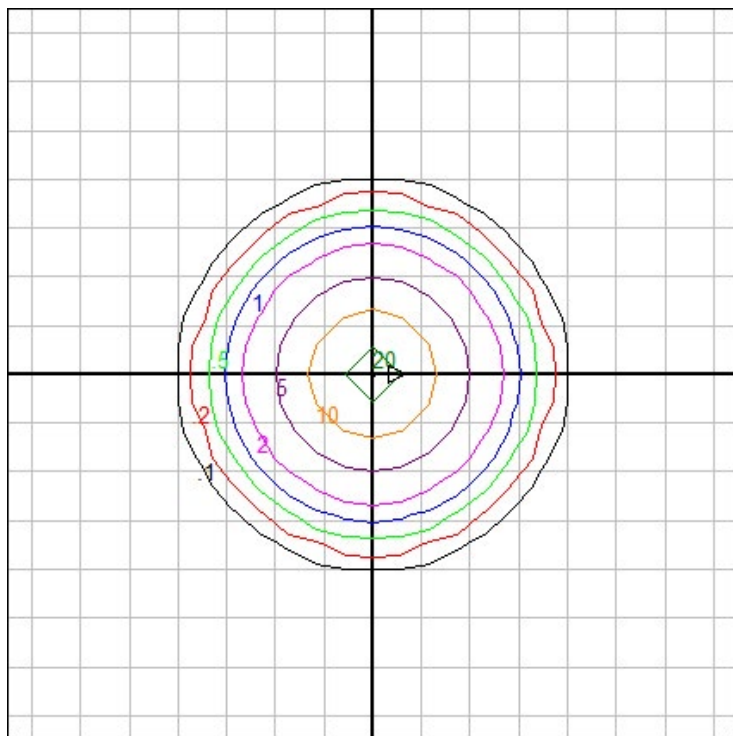


Characteristics

Lumens Per Lamp	N.A. (absolute)
Total Lamp Lumens	N.A. (absolute)
Luminaire Lumens	1665
Total Luminaire Efficiency	N.A.
Luminaire Efficacy Rating (LER)	83
Total Luminaire Watts	20
Ballast Factor	1.00
CIE Type	Direct
Spacing Criterion (0-180)	0.62
Spacing Criterion (90-270)	0.62
Spacing Criterion (Diagonal)	0.72
Basic Luminous Shape	Circular
Luminous Length (0-180)	0.00 ft
Luminous Width (90-270)	0.52 ft (Diameter)
Luminous Height	0.00 ft

Zonal Lumen Summary

Zone	Lumens
0-10	222.03
10-20	460.62
20-30	472.98
30-40	353.07
40-50	112.43
50-60	22.81
60-70	14.39
70-80	5.75
80-90	1.01
90-100	0.00
100-110	0.00
110-120	0.00
120-130	0.00
130-140	0.00
140-150	0.00
150-160	0.00
160-170	0.00
170-180	0.00



Mounting Height: 10 ft.

Grid Spacing: 3 ft.

In the interest of product improvement, BEGA reserves the right to make technical changes without notice.

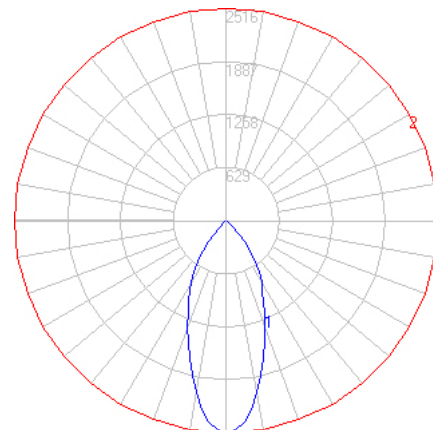
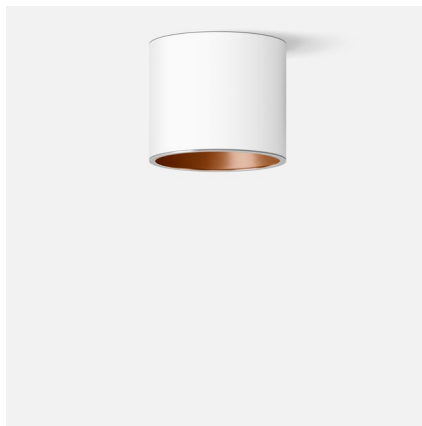
BEGA 1000 Bega Way, Carpinteria, CA 93013 (805)684-0533 Fax (805)566-9474 www.bega-us.com © Copyright BEGA-US 2020

07/30/20

BEGA

File: 50679.6K4_BEGA_IES.ies

TEST: BE_50679.6K3
TEST LAB: BEGA
DATE: 11/29/2018
LUMINAIRE: 50 679.6K4
LAMP: 17.0W LED

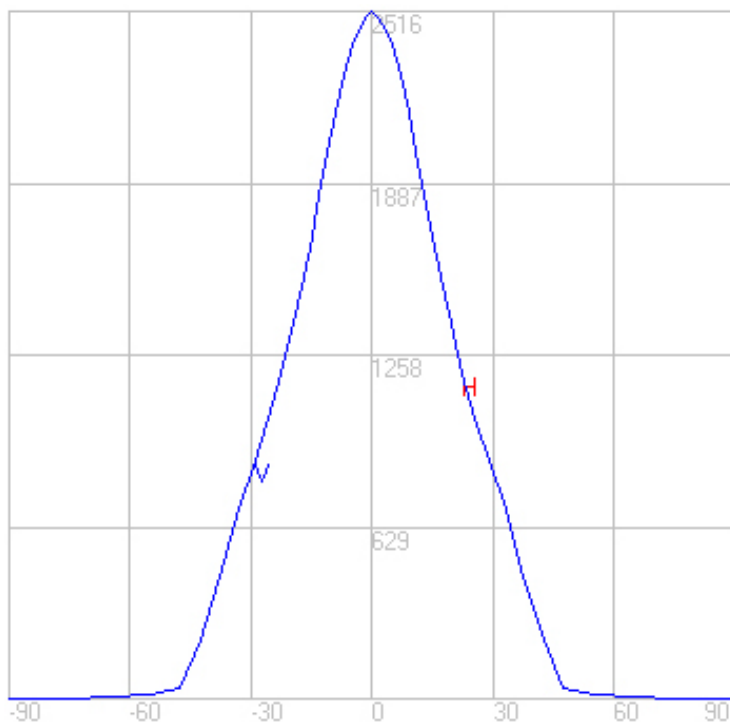
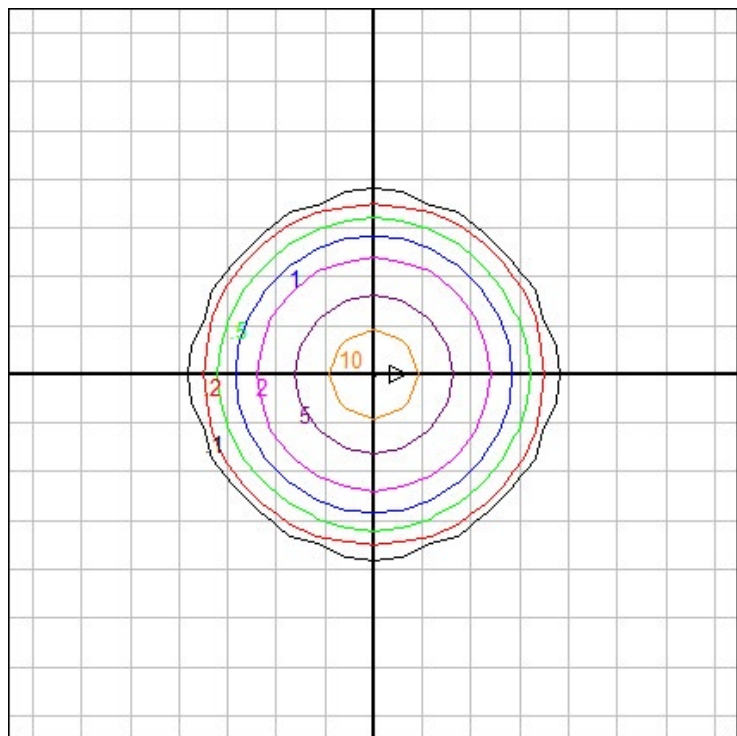


Characteristics

Lumens Per Lamp	N.A. (absolute)
Total Lamp Lumens	N.A. (absolute)
Luminaire Lumens	1664
Total Luminaire Efficiency	N.A.
Luminaire Efficacy Rating (LER)	83
Total Luminaire Watts	20
Ballast Factor	1.00
CIE Type	Direct
Spacing Criterion (0-180)	0.66
Spacing Criterion (90-270)	0.66
Spacing Criterion (Diagonal)	0.76
Basic Luminous Shape	Circular
Luminous Length (0-180)	0.00 m
Luminous Width (90-270)	0.16 m (Diameter)
Luminous Height	0.00 m

Zonal Lumen Summary

Zone	Lumens
0-10	218.65
10-20	471.15
20-30	486.45
30-40	362.05
40-50	100.88
50-60	12.60
60-70	8.32
70-80	3.11
80-90	0.36
90-100	0.00
100-110	0.00
110-120	0.00
120-130	0.00
130-140	0.00
140-150	0.00
150-160	0.00
160-170	0.00
170-180	0.00



Mounting Height: 10 ft.

Grid Spacing: 3 ft.

In the interest of product improvement, BEGA reserves the right to make technical changes without notice.

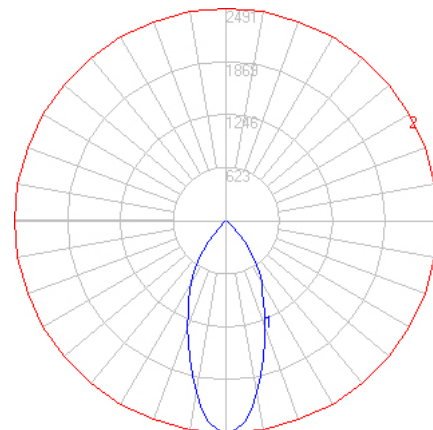
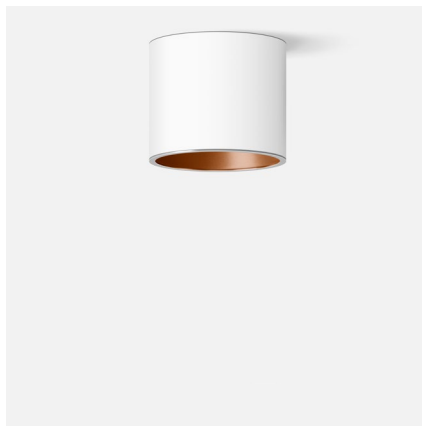
BEGA 1000 Bega Way, Carpinteria, CA 93013 (805)684-0533 Fax (805)566-9474 www.bega-us.com © Copyright BEGA-US 2020

07/30/20

BEGA

File: 50679.6K35_BEGA_IES.ies

TEST: BE_50679.6K3
TEST LAB: BEGA
DATE: 11/29/2018
LUMINAIRE: 50 679.6K35
LAMP: 17.0W LED

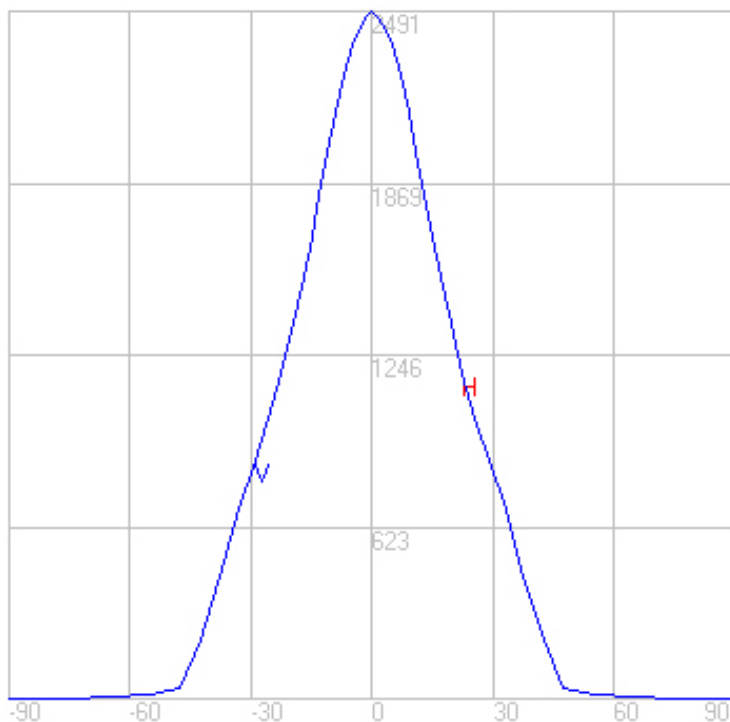
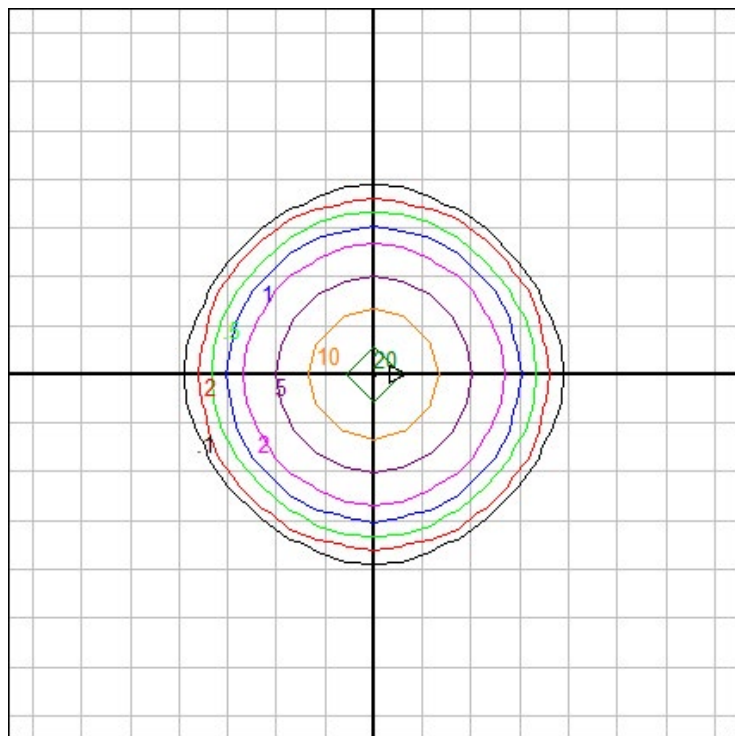


Characteristics

Lumens Per Lamp	N.A. (absolute)
Total Lamp Lumens	N.A. (absolute)
Luminaire Lumens	1647
Total Luminaire Efficiency	N.A.
Luminaire Efficacy Rating (LER)	82
Total Luminaire Watts	20
Ballast Factor	1.00
CIE Type	Direct
Spacing Criterion (0-180)	0.66
Spacing Criterion (90-270)	0.66
Spacing Criterion (Diagonal)	0.76
Basic Luminous Shape	Circular
Luminous Length (0-180)	0.00 m
Luminous Width (90-270)	0.16 m (Diameter)
Luminous Height	0.00 m

Zonal Lumen Summary

Zone	Lumens
0-10	216.50
10-20	466.53
20-30	481.68
30-40	358.50
40-50	99.89
50-60	12.48
60-70	8.23
70-80	3.08
80-90	0.36
90-100	0.00
100-110	0.00
110-120	0.00
120-130	0.00
130-140	0.00
140-150	0.00
150-160	0.00
160-170	0.00
170-180	0.00



Mounting Height: 10 ft.

Grid Spacing: 3 ft.

In the interest of product improvement, BEGA reserves the right to make technical changes without notice.

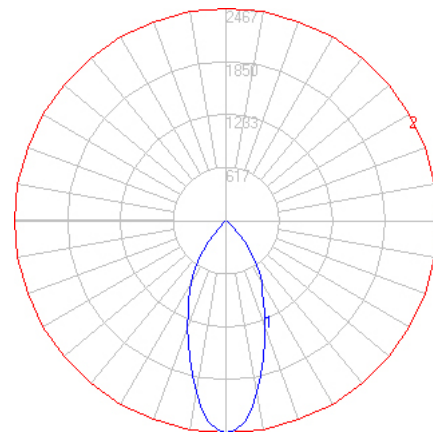
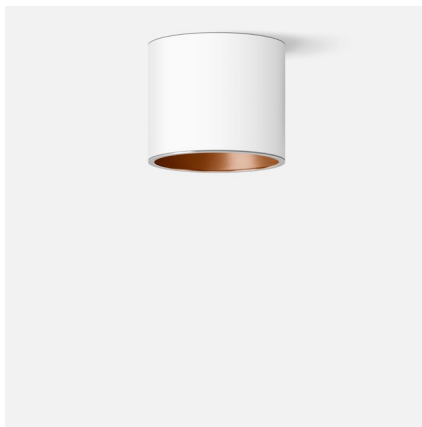
BEGA 1000 Bega Way, Carpinteria, CA 93013 (805)684-0533 Fax (805)566-9474 www.bega-us.com © Copyright BEGA-US 2020

07/30/20

BEGA

File: 50679.6K3_BEGA_IES.ies

TEST: BE_50679.6K3
TEST LAB: BEGA
DATE: 11/29/2018
LUMINAIRE: 50 679.6K3
LAMP: 17.0W LED

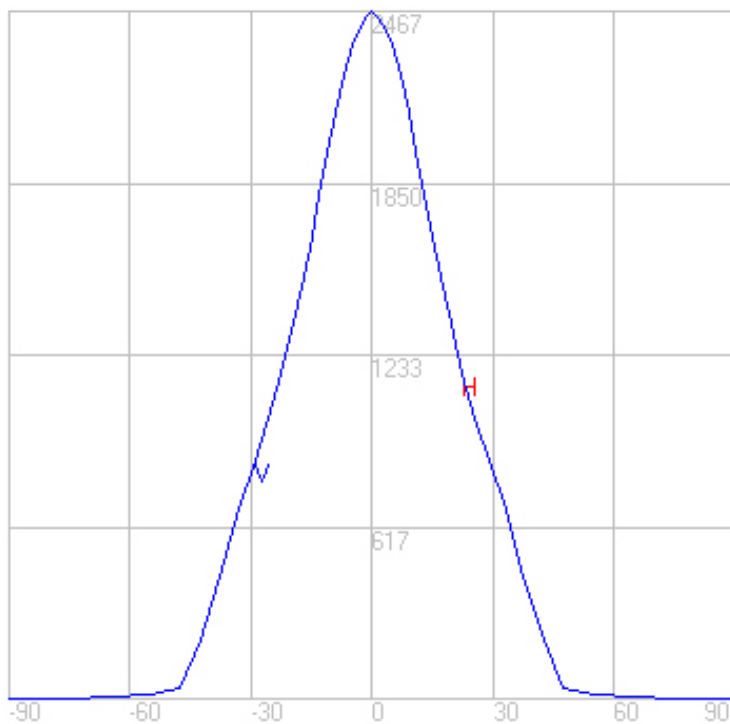
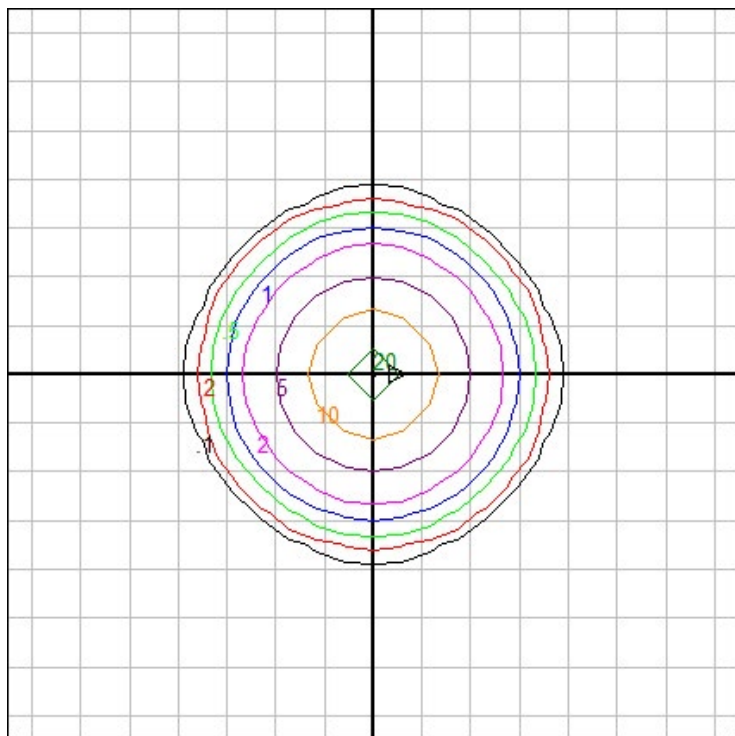


Characteristics

Lumens Per Lamp	N.A. (absolute)
Total Lamp Lumens	N.A. (absolute)
Luminaire Lumens	1631
Total Luminaire Efficiency	N.A.
Luminaire Efficacy Rating (LER)	82
Total Luminaire Watts	20
Ballast Factor	1.00
CIE Type	Direct
Spacing Criterion (0-180)	0.66
Spacing Criterion (90-270)	0.66
Spacing Criterion (Diagonal)	0.76
Basic Luminous Shape	Circular
Luminous Length (0-180)	0.00 m
Luminous Width (90-270)	0.16 m (Diameter)
Luminous Height	0.00 m

Zonal Lumen Summary

Zone	Lumens
0-10	214.36
10-20	461.91
20-30	476.91
30-40	354.95
40-50	98.90
50-60	12.36
60-70	8.15
70-80	3.05
80-90	0.35
90-100	0.00
100-110	0.00
110-120	0.00
120-130	0.00
130-140	0.00
140-150	0.00
150-160	0.00
160-170	0.00
170-180	0.00



Mounting Height: 10 ft.

Grid Spacing: 3 ft.

In the interest of product improvement, BEGA reserves the right to make technical changes without notice.

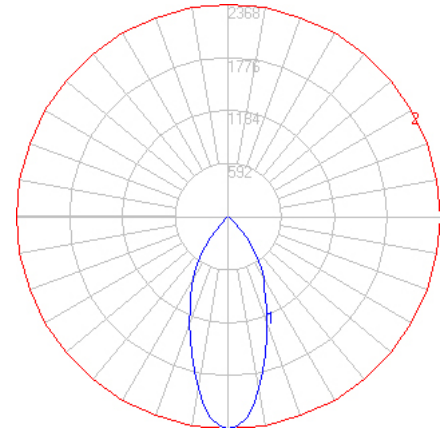
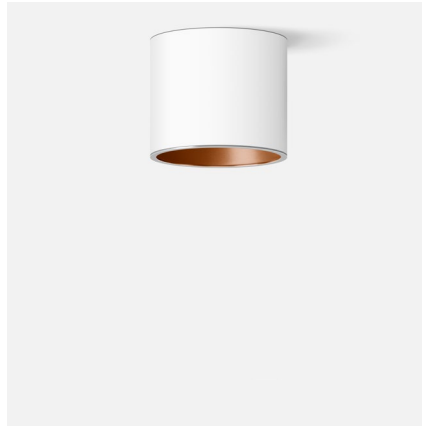
BEGA 1000 Bega Way, Carpinteria, CA 93013 (805)684-0533 Fax (805)566-9474 www.bega-us.com © Copyright BEGA-US 2020

07/30/20

BEGA

File: 50679.6K27_BEGA_IES.ies

TEST: BE_50679.6K3
TEST LAB: BEGA
DATE: 11/29/2018
LUMINAIRE: 50 679.6K427
LAMP: 17.0W LED

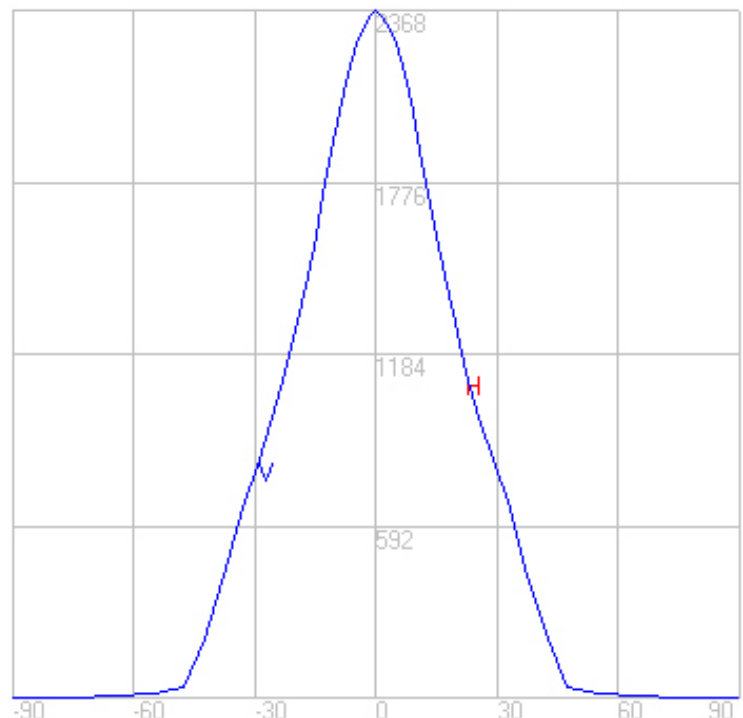
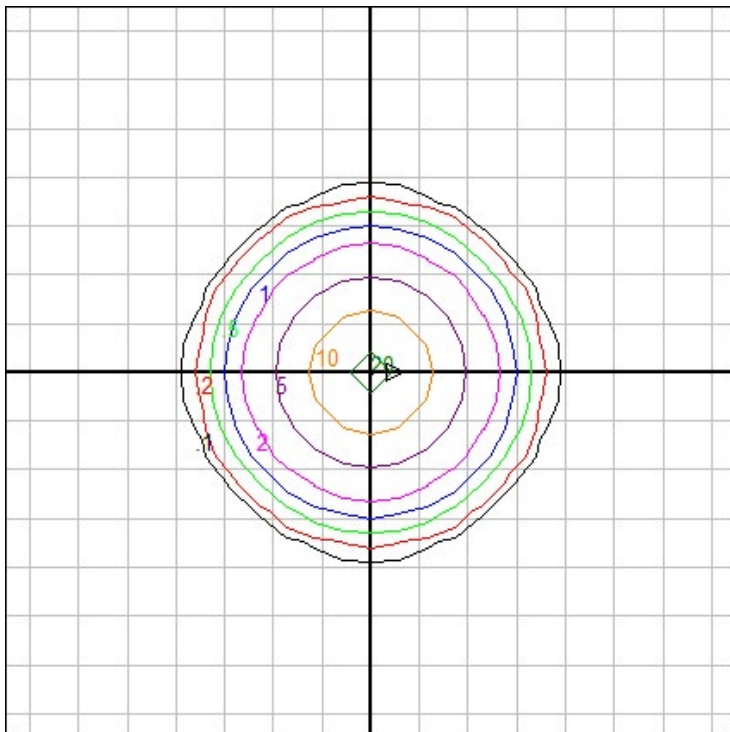


Characteristics

Lumens Per Lamp	N.A. (absolute)
Total Lamp Lumens	N.A. (absolute)
Luminaire Lumens	1566
Total Luminaire Efficiency	N.A.
Luminaire Efficacy Rating (LER)	78
Total Luminaire Watts	20
Ballast Factor	1.00
CIE Type	Direct
Spacing Criterion (0-180)	0.66
Spacing Criterion (90-270)	0.66
Spacing Criterion (Diagonal)	0.76
Basic Luminous Shape	Circular
Luminous Length (0-180)	0.00 m
Luminous Width (90-270)	0.16 m (Diameter)
Luminous Height	0.00 m

Zonal Lumen Summary

Zone	Lumens
0-10	205.78
10-20	443.44
20-30	457.83
30-40	340.75
40-50	94.94
50-60	11.86
60-70	7.83
70-80	2.93
80-90	0.34
90-100	0.00
100-110	0.00
110-120	0.00
120-130	0.00
130-140	0.00
140-150	0.00
150-160	0.00
160-170	0.00
170-180	0.00



Mounting Height: 10 ft.

Grid Spacing: 3 ft.

In the interest of product improvement, BEGA reserves the right to make technical changes without notice.

BEGA 1000 Bega Way, Carpinteria, CA 93013 (805)684-0533 Fax (805)566-9474 www.bega-us.com © Copyright BEGA-US 2020

07/30/20