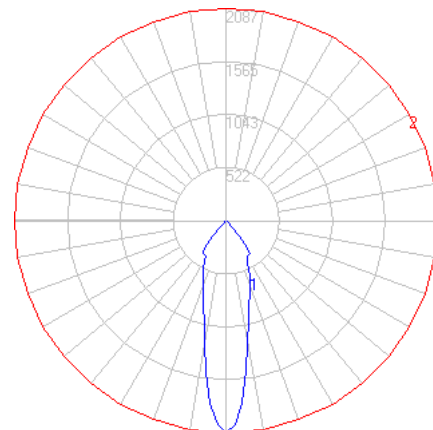
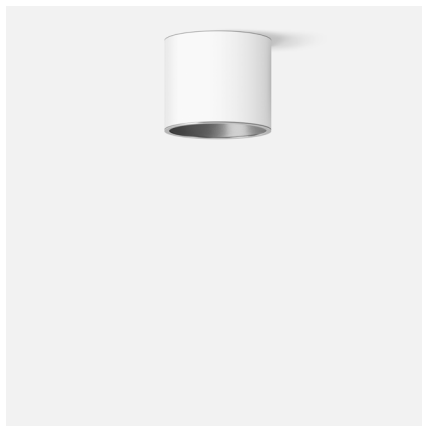


BEGA

File: 50677.2K4_BEGA_IES.ies

TEST: BE_50677.2K3
TEST LAB: BEGA
DATE: 11/26/2018
LUMINAIRE: 50 677.2K4
LAMP: 8.1W LED

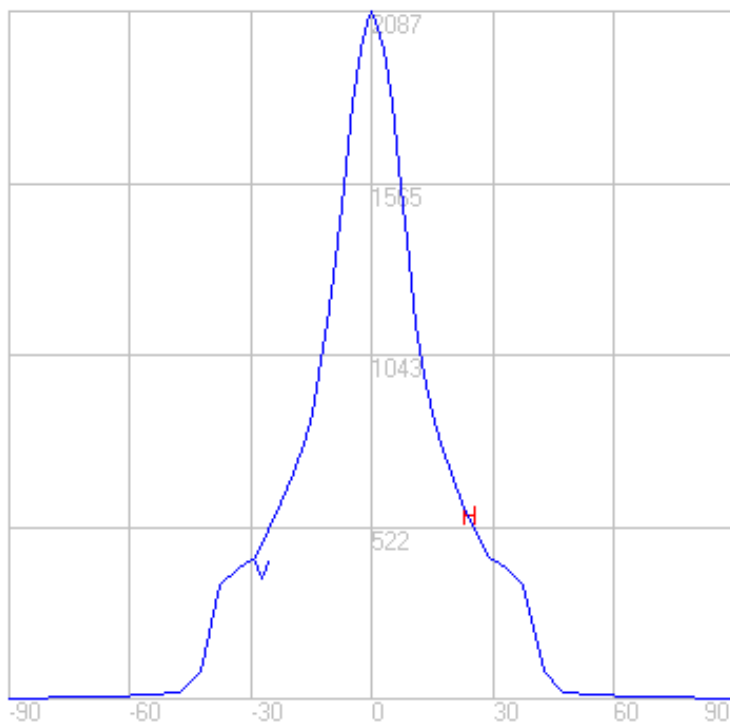
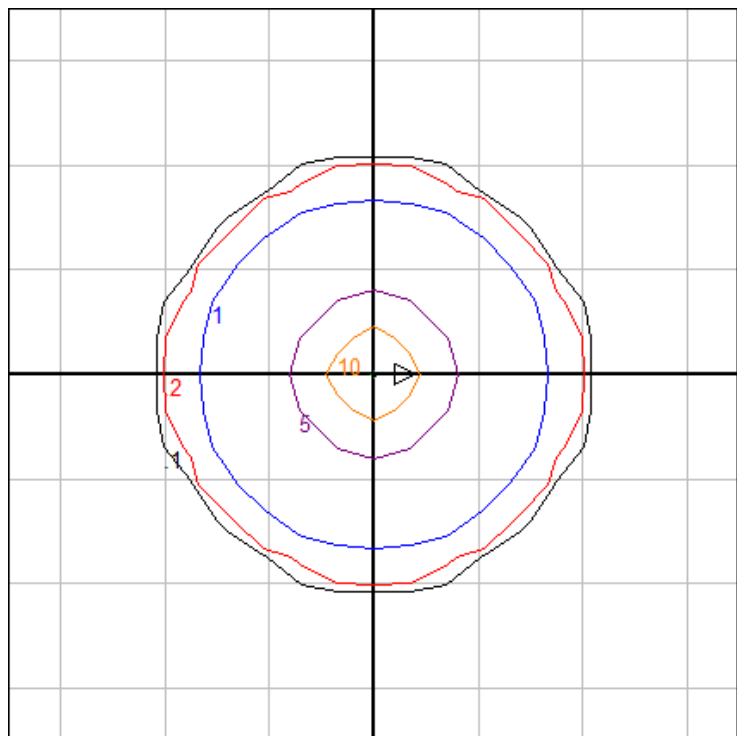


Characteristics

| | |
|---------------------------------|--------------------|
| Lumens Per Lamp | N.A. (absolute) |
| Total Lamp Lumens | N.A. (absolute) |
| Luminaire Lumens | 937 |
| Total Luminaire Efficiency | N.A. |
| Luminaire Efficacy Rating (LER) | 94 |
| Total Luminaire Watts | 10 |
| Ballast Factor | 1.00 |
| CIE Type | Direct |
| Spacing Criterion (0-180) | 0.42 |
| Spacing Criterion (90-270) | 0.42 |
| Spacing Criterion (Diagonal) | 0.56 |
| Basic Luminous Shape | Circular |
| Luminous Length (0-180) | 0.00 ft |
| Luminous Width (90-270) | 0.33 ft (Diameter) |
| Luminous Height | 0.00 ft |

Zonal Lumen Summary

| Zone | Lumens |
|---------|--------|
| 0-10 | 152.61 |
| 10-20 | 246.26 |
| 20-30 | 241.37 |
| 30-40 | 226.22 |
| 40-50 | 44.10 |
| 50-60 | 11.77 |
| 60-70 | 9.30 |
| 70-80 | 4.20 |
| 80-90 | 0.79 |
| 90-100 | 0.00 |
| 100-110 | 0.00 |
| 110-120 | 0.00 |
| 120-130 | 0.00 |
| 130-140 | 0.00 |
| 140-150 | 0.00 |
| 150-160 | 0.00 |
| 160-170 | 0.00 |
| 170-180 | 0.00 |



Ceiling Mounting Height: 10 ft.

Grid Spacing: 5 ft.

In the interest of product improvement, BEGA reserves the right to make technical changes without notice.

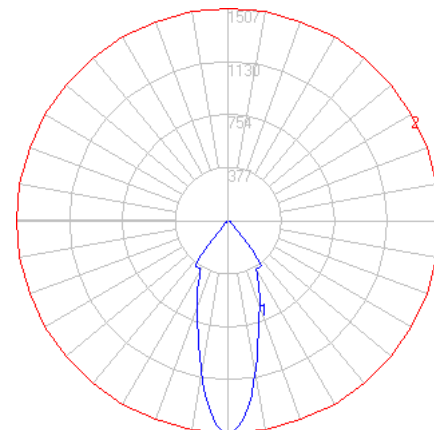
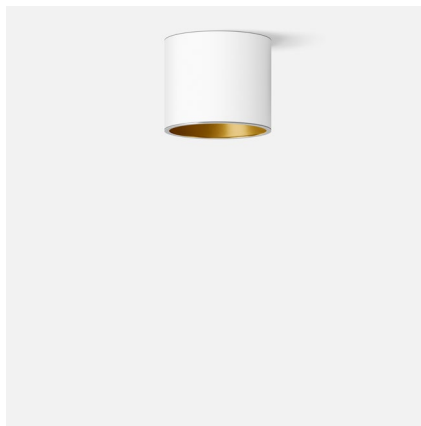
BEGA 1000 Bega Way, Carpinteria, CA 93013 (805)684-0533 Fax (805)566-9474 www.bega-us.com © Copyright BEGA-US 2020

06/25/2020

BEGA

File: 50677.4K4_BEGA_IES.ies

TEST: BE_50677.4K3
TEST LAB: BEGA
DATE: 11/26/2018
LUMINAIRE: 50 677.4K4
LAMP: 8.1W LED

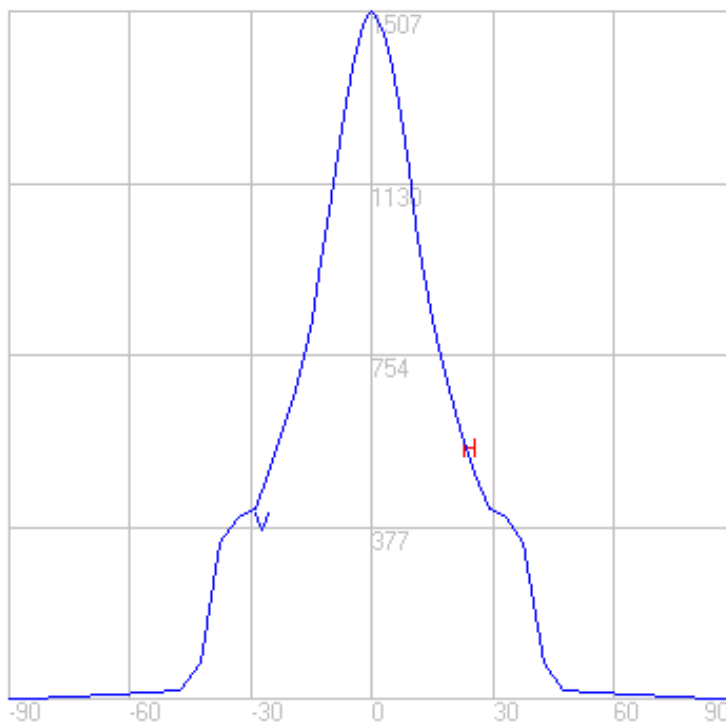
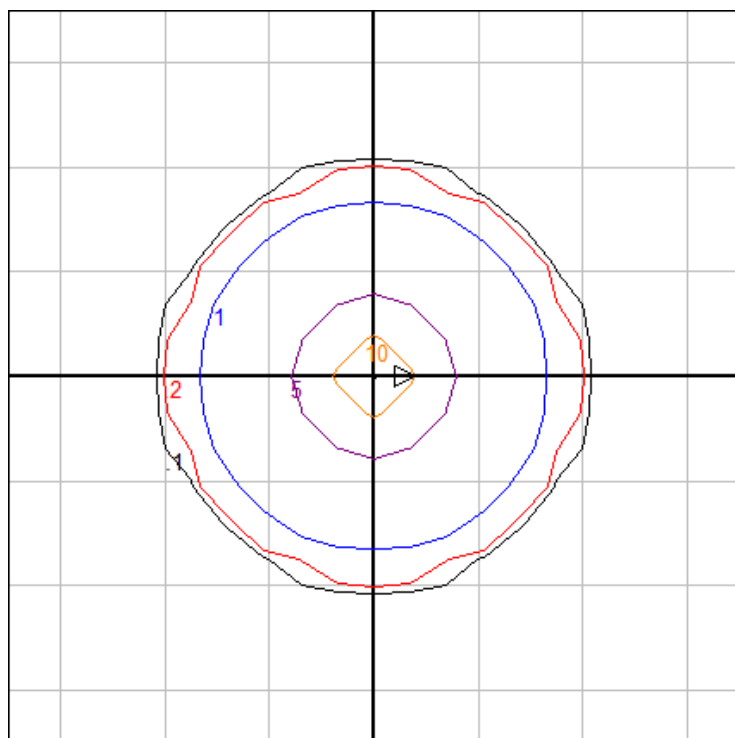


Characteristics

| | |
|---------------------------------|--------------------|
| Lumens Per Lamp | N.A. (absolute) |
| Total Lamp Lumens | N.A. (absolute) |
| Luminaire Lumens | 879 |
| Total Luminaire Efficiency | N.A. |
| Luminaire Efficacy Rating (LER) | 88 |
| Total Luminaire Watts | 10 |
| Ballast Factor | 1.00 |
| CIE Type | Direct |
| Spacing Criterion (0-180) | 0.54 |
| Spacing Criterion (90-270) | 0.54 |
| Spacing Criterion (Diagonal) | 0.68 |
| Basic Luminous Shape | Circular |
| Luminous Length (0-180) | 0.00 ft |
| Luminous Width (90-270) | 0.33 ft (Diameter) |
| Luminous Height | 0.00 ft |

Zonal Lumen Summary

| Zone | Lumens |
|---------|--------|
| 0-10 | 102.43 |
| 10-20 | 241.57 |
| 20-30 | 246.28 |
| 30-40 | 209.77 |
| 40-50 | 56.55 |
| 50-60 | 12.03 |
| 60-70 | 6.73 |
| 70-80 | 3.22 |
| 80-90 | 0.42 |
| 90-100 | 0.00 |
| 100-110 | 0.00 |
| 110-120 | 0.00 |
| 120-130 | 0.00 |
| 130-140 | 0.00 |
| 140-150 | 0.00 |
| 150-160 | 0.00 |
| 160-170 | 0.00 |
| 170-180 | 0.00 |



Ceiling Mounting Height: 10 ft.

Grid Spacing: 5 ft.

In the interest of product improvement, BEGA reserves the right to make technical changes without notice.

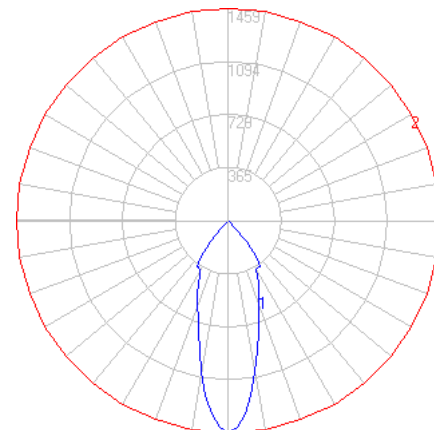
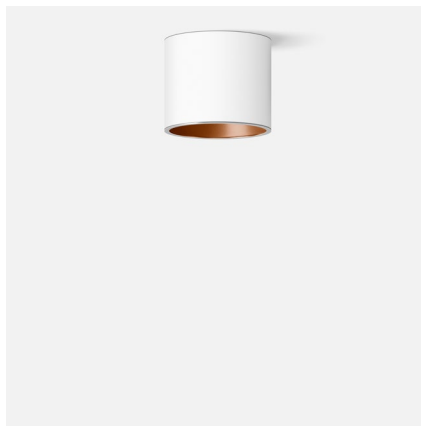
BEGA 1000 Bega Way, Carpinteria, CA 93013 (805)684-0533 Fax (805)566-9474 www.bega-us.com © Copyright BEGA-US 2020

06/25/2020

BEGA

File: 50677.6K4_BEGA_IES.ies

TEST: BE_50677.6K3
 TEST LAB: BEGA
 DATE: 11/29/2018
 LUMINAIRE: 50 677.6K4
 LAMP: 8.1W LED

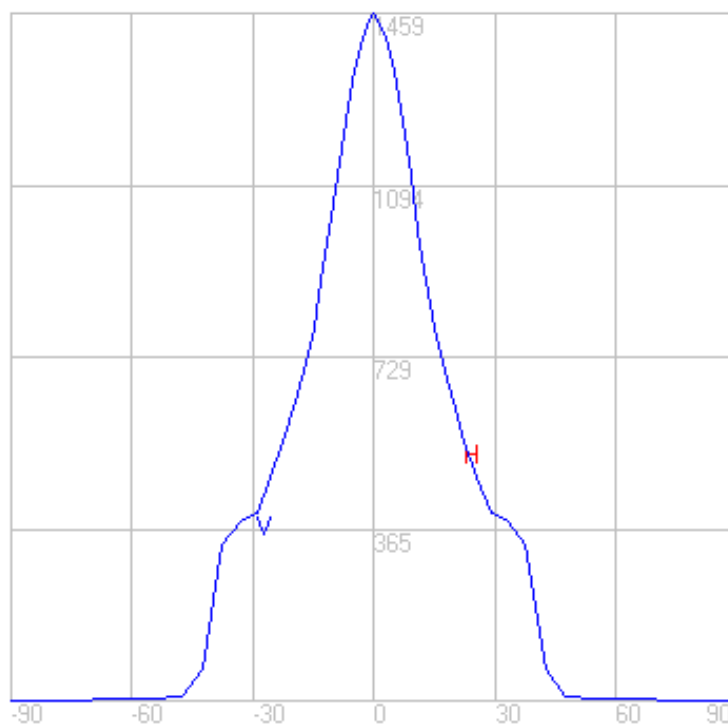
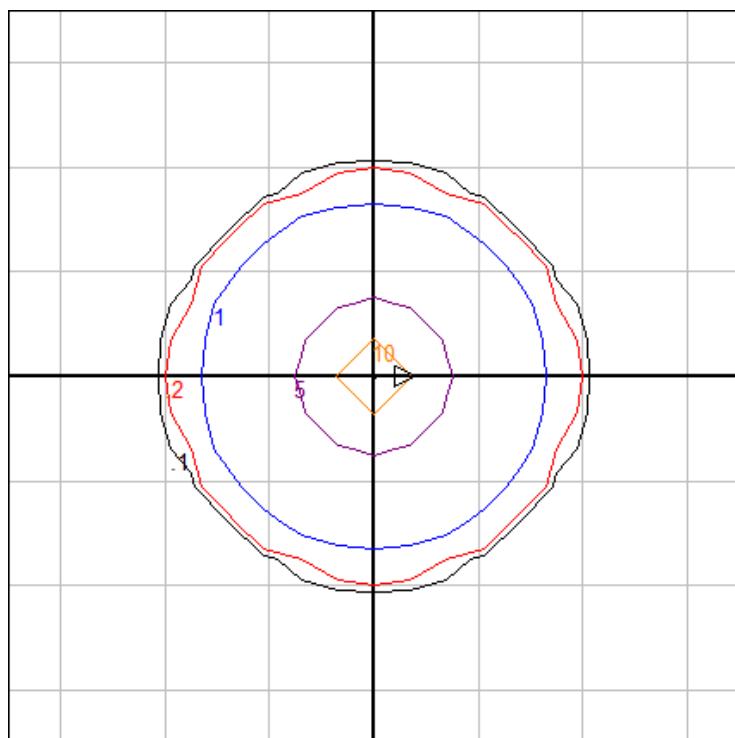


Characteristics

| | |
|---------------------------------|--------------------|
| Lumens Per Lamp | N.A. (absolute) |
| Total Lamp Lumens | N.A. (absolute) |
| Luminaire Lumens | 825 |
| Total Luminaire Efficiency | N.A. |
| Luminaire Efficacy Rating (LER) | 83 |
| Total Luminaire Watts | 10 |
| Ballast Factor | 1.00 |
| CIE Type | Direct |
| Spacing Criterion (0-180) | 0.54 |
| Spacing Criterion (90-270) | 0.54 |
| Spacing Criterion (Diagonal) | 0.66 |
| Basic Luminous Shape | Circular |
| Luminous Length (0-180) | 0.00 ft |
| Luminous Width (90-270) | 0.33 ft (Diameter) |
| Luminous Height | 0.00 ft |

Zonal Lumen Summary

| Zone | Lumens |
|---------|--------|
| 0-10 | 118.55 |
| 10-20 | 223.23 |
| 20-30 | 223.85 |
| 30-40 | 214.73 |
| 40-50 | 35.34 |
| 50-60 | 5.10 |
| 60-70 | 3.31 |
| 70-80 | 1.07 |
| 80-90 | 0.21 |
| 90-100 | 0.00 |
| 100-110 | 0.00 |
| 110-120 | 0.00 |
| 120-130 | 0.00 |
| 130-140 | 0.00 |
| 140-150 | 0.00 |
| 150-160 | 0.00 |
| 160-170 | 0.00 |
| 170-180 | 0.00 |



Ceiling Mounting Height: 10 ft.

Grid Spacing: 5 ft.

In the interest of product improvement, BEGA reserves the right to make technical changes without notice.

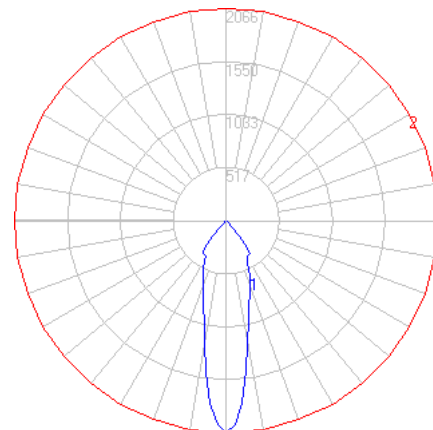
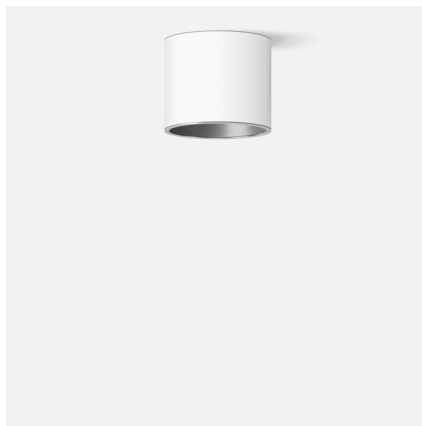
BEGA 1000 Bega Way, Carpinteria, CA 93013 (805)684-0533 Fax (805)566-9474 www.bega-us.com © Copyright BEGA-US 2020

06/25/2020

BEGA

File: 50677.2K35_BEGA_IES.ies

TEST: BE_50677.2K3
 TEST LAB: BEGA
 DATE: 11/26/2018
 LUMINAIRE: 50 677K35
 LAMP: 8.1W LED

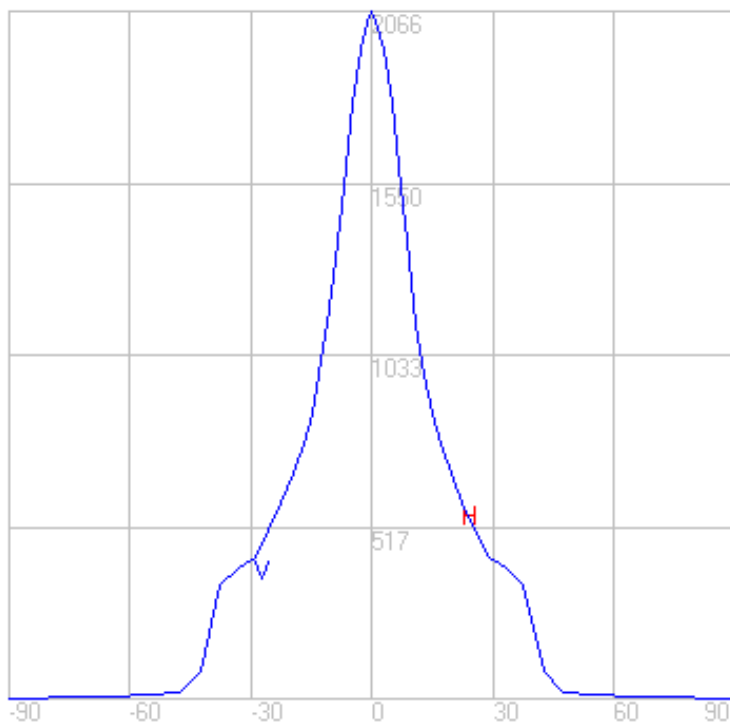
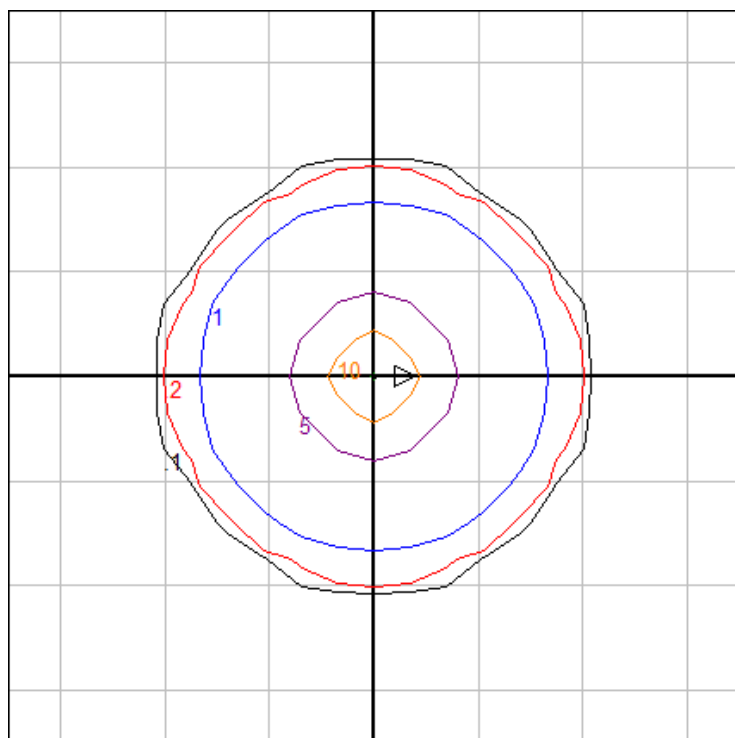


Characteristics

| | |
|---------------------------------|--------------------|
| Lumens Per Lamp | N.A. (absolute) |
| Total Lamp Lumens | N.A. (absolute) |
| Luminaire Lumens | 927 |
| Total Luminaire Efficiency | N.A. |
| Luminaire Efficacy Rating (LER) | 93 |
| Total Luminaire Watts | 10 |
| Ballast Factor | 1.00 |
| CIE Type | Direct |
| Spacing Criterion (0-180) | 0.42 |
| Spacing Criterion (90-270) | 0.42 |
| Spacing Criterion (Diagonal) | 0.56 |
| Basic Luminous Shape | Circular |
| Luminous Length (0-180) | 0.00 ft |
| Luminous Width (90-270) | 0.33 ft (Diameter) |
| Luminous Height | 0.00 ft |

Zonal Lumen Summary

| Zone | Lumens |
|---------|--------|
| 0-10 | 151.11 |
| 10-20 | 243.84 |
| 20-30 | 239.00 |
| 30-40 | 224.00 |
| 40-50 | 43.67 |
| 50-60 | 11.66 |
| 60-70 | 9.21 |
| 70-80 | 4.16 |
| 80-90 | 0.78 |
| 90-100 | 0.00 |
| 100-110 | 0.00 |
| 110-120 | 0.00 |
| 120-130 | 0.00 |
| 130-140 | 0.00 |
| 140-150 | 0.00 |
| 150-160 | 0.00 |
| 160-170 | 0.00 |
| 170-180 | 0.00 |



Ceiling Mounting Height: 10 ft.

Grid Spacing: 5 ft.

In the interest of product improvement, BEGA reserves the right to make technical changes without notice.

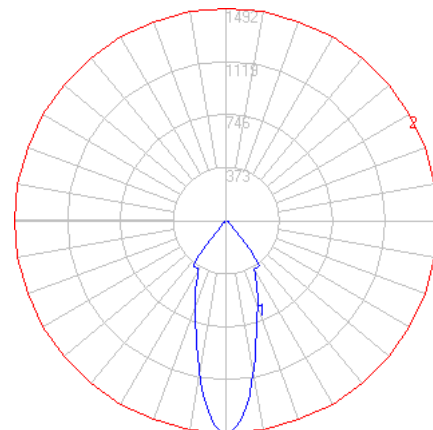
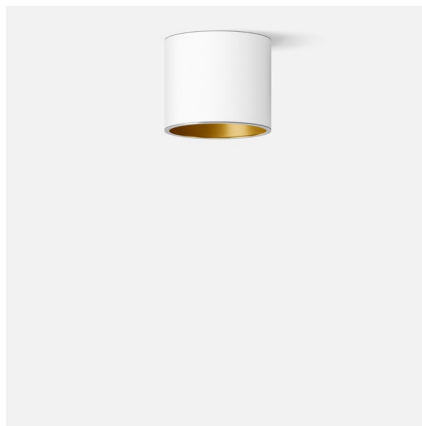
BEGA 1000 Bega Way, Carpinteria, CA 93013 (805)684-0533 Fax (805)566-9474 www.bega-us.com © Copyright BEGA-US 2020

06/25/2020

BEGA

File: 50677.4K35_BEGA_IES.ies

TEST: BE_50677.4K3
TEST LAB: BEGA
DATE: 11/26/2018
LUMINAIRE: 50 677.4K35
LAMP: 8.1W LED

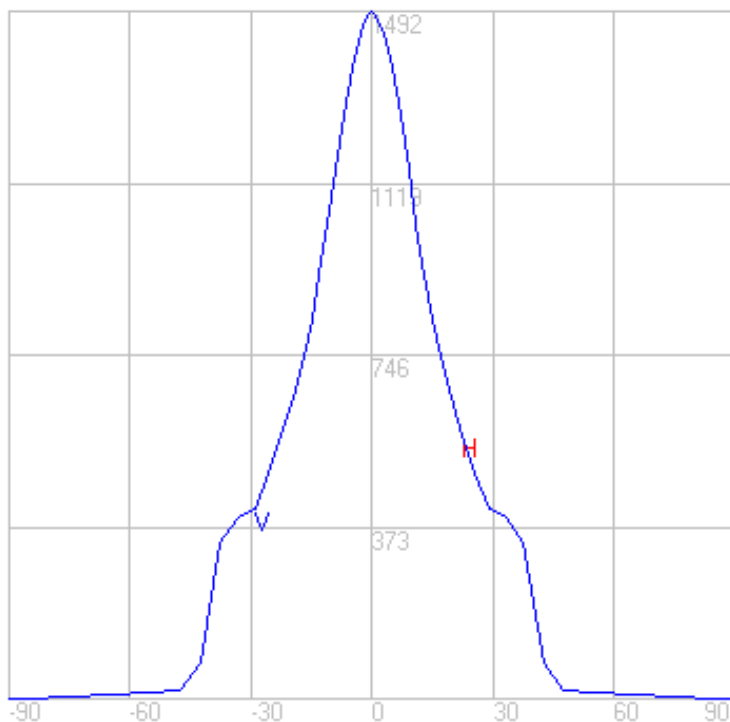
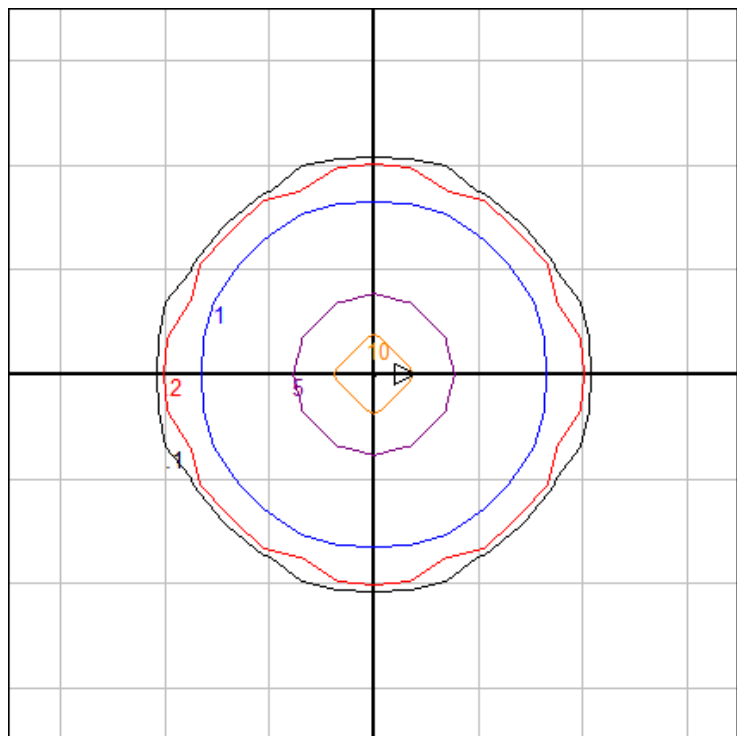


Characteristics

| | |
|---------------------------------|--------------------|
| Lumens Per Lamp | N.A. (absolute) |
| Total Lamp Lumens | N.A. (absolute) |
| Luminaire Lumens | 870 |
| Total Luminaire Efficiency | N.A. |
| Luminaire Efficacy Rating (LER) | 87 |
| Total Luminaire Watts | 10 |
| Ballast Factor | 1.00 |
| CIE Type | Direct |
| Spacing Criterion (0-180) | 0.54 |
| Spacing Criterion (90-270) | 0.54 |
| Spacing Criterion (Diagonal) | 0.68 |
| Basic Luminous Shape | Circular |
| Luminous Length (0-180) | 0.00 ft |
| Luminous Width (90-270) | 0.33 ft (Diameter) |
| Luminous Height | 0.00 ft |

Zonal Lumen Summary

| Zone | Lumens |
|---------|--------|
| 0-10 | 101.43 |
| 10-20 | 239.20 |
| 20-30 | 243.87 |
| 30-40 | 207.71 |
| 40-50 | 56.00 |
| 50-60 | 11.91 |
| 60-70 | 6.67 |
| 70-80 | 3.19 |
| 80-90 | 0.41 |
| 90-100 | 0.00 |
| 100-110 | 0.00 |
| 110-120 | 0.00 |
| 120-130 | 0.00 |
| 130-140 | 0.00 |
| 140-150 | 0.00 |
| 150-160 | 0.00 |
| 160-170 | 0.00 |
| 170-180 | 0.00 |



Ceiling Mounting Height: 10 ft.

Grid Spacing: 5 ft.

In the interest of product improvement, BEGA reserves the right to make technical changes without notice.

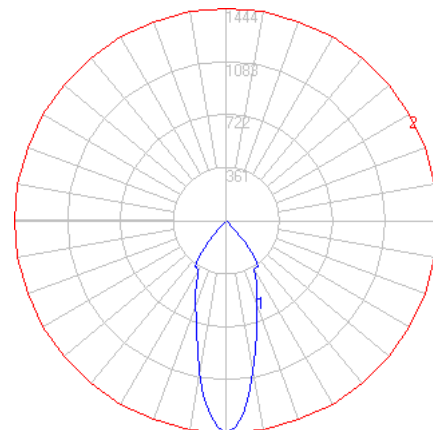
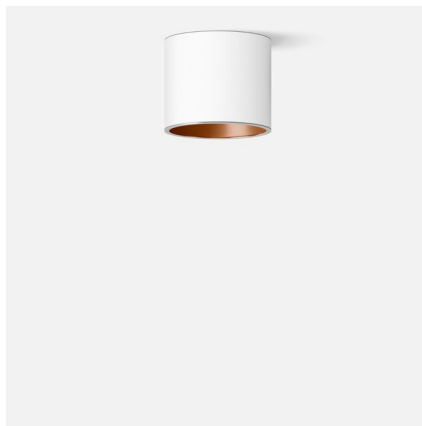
BEGA 1000 Bega Way, Carpinteria, CA 93013 (805)684-0533 Fax (805)566-9474 www.bega-us.com © Copyright BEGA-US 2020

06/25/2020

BEGA

File: 50677.6K35_BEGA_IES.ies

TEST: BE_50677.6K3
 TEST LAB: BEGA
 DATE: 11/26/2018
 LUMINAIRE: 50 677.6K35
 LAMP: 8.1W LED

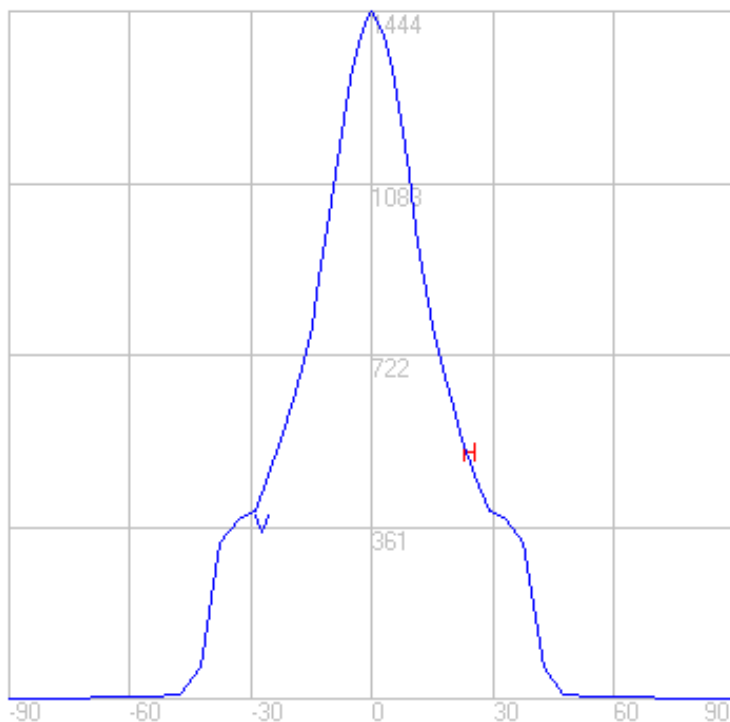
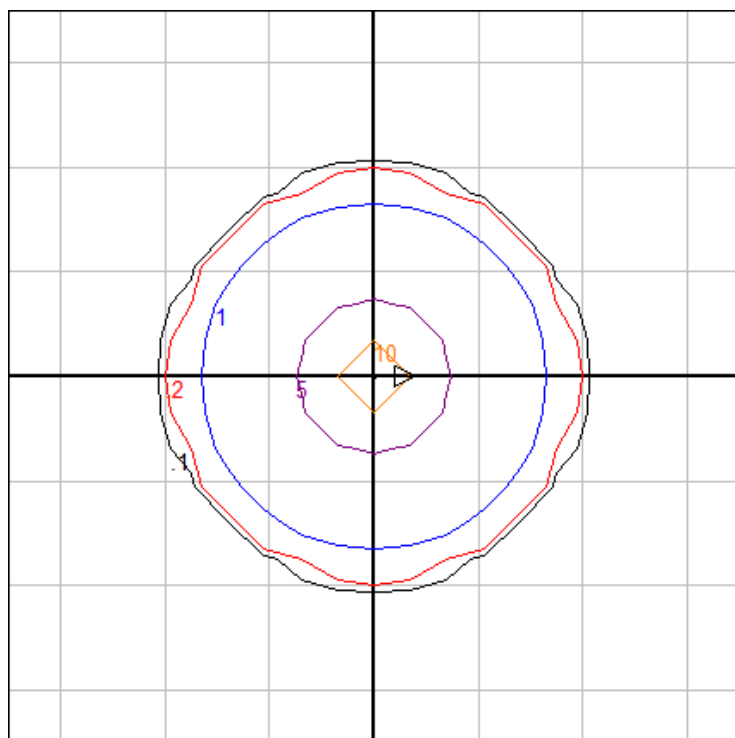


Characteristics

| | |
|---------------------------------|--------------------|
| Lumens Per Lamp | N.A. (absolute) |
| Total Lamp Lumens | N.A. (absolute) |
| Luminaire Lumens | 817 |
| Total Luminaire Efficiency | N.A. |
| Luminaire Efficacy Rating (LER) | 82 |
| Total Luminaire Watts | 10 |
| Ballast Factor | 1.00 |
| CIE Type | Direct |
| Spacing Criterion (0-180) | 0.54 |
| Spacing Criterion (90-270) | 0.54 |
| Spacing Criterion (Diagonal) | 0.66 |
| Basic Luminous Shape | Circular |
| Luminous Length (0-180) | 0.00 ft |
| Luminous Width (90-270) | 0.33 ft (Diameter) |
| Luminous Height | 0.00 ft |

Zonal Lumen Summary

| Zone | Lumens |
|---------|--------|
| 0-10 | 117.39 |
| 10-20 | 221.04 |
| 20-30 | 221.65 |
| 30-40 | 212.63 |
| 40-50 | 34.99 |
| 50-60 | 5.05 |
| 60-70 | 3.28 |
| 70-80 | 1.06 |
| 80-90 | 0.21 |
| 90-100 | 0.00 |
| 100-110 | 0.00 |
| 110-120 | 0.00 |
| 120-130 | 0.00 |
| 130-140 | 0.00 |
| 140-150 | 0.00 |
| 150-160 | 0.00 |
| 160-170 | 0.00 |
| 170-180 | 0.00 |



Ceiling Mounting Height: 10 ft.

Grid Spacing: 5 ft.

In the interest of product improvement, BEGA reserves the right to make technical changes without notice.

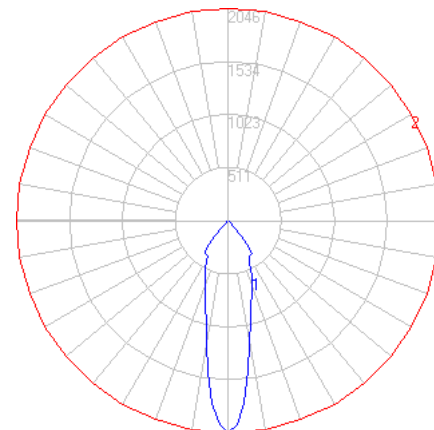
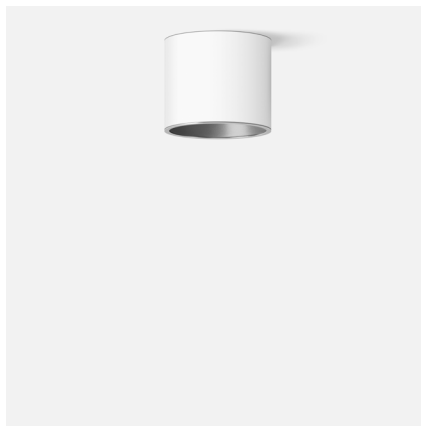
BEGA 1000 Bega Way, Carpinteria, CA 93013 (805)684-0533 Fax (805)566-9474 www.bega-us.com © Copyright BEGA-US 2020

06/25/2020

BEGA

File: 50677.2K3_BEGA_IES.ies

TEST: BE_50677.2K3
TEST LAB: BEGA
DATE: 11/26/2018
LUMINAIRE: 50 677.2K3
LAMP: 8.1W LED

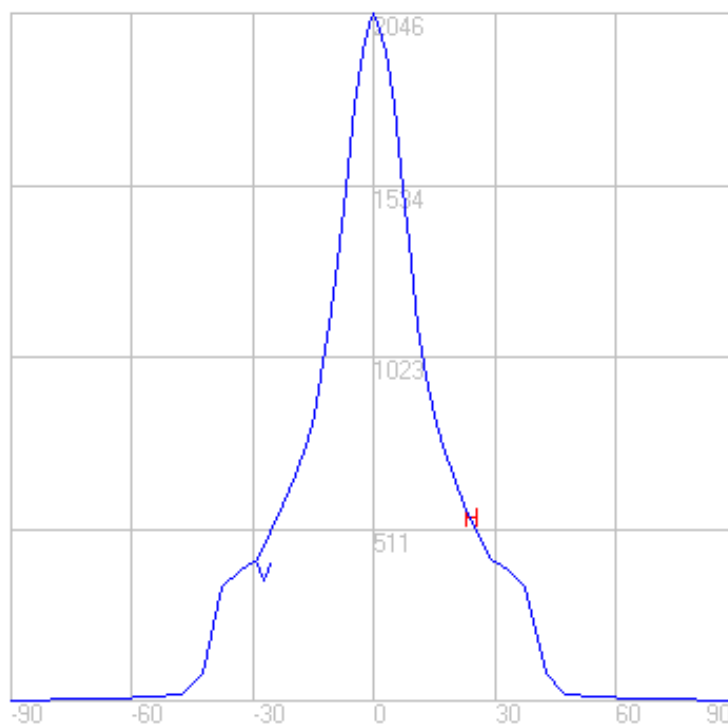
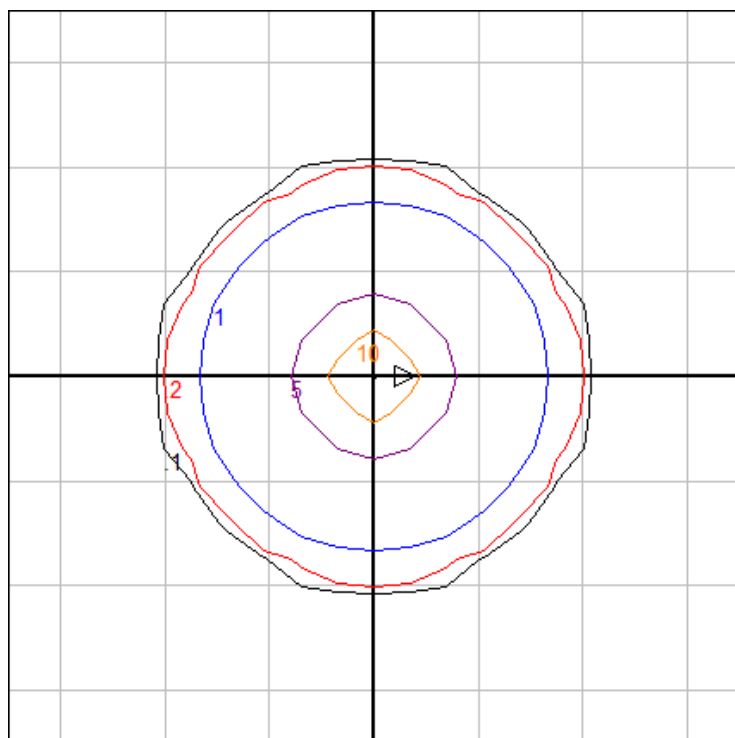


Characteristics

| | |
|---------------------------------|--------------------|
| Lumens Per Lamp | N.A. (absolute) |
| Total Lamp Lumens | N.A. (absolute) |
| Luminaire Lumens | 918 |
| Total Luminaire Efficiency | N.A. |
| Luminaire Efficacy Rating (LER) | 92 |
| Total Luminaire Watts | 10 |
| Ballast Factor | 1.00 |
| CIE Type | Direct |
| Spacing Criterion (0-180) | 0.42 |
| Spacing Criterion (90-270) | 0.42 |
| Spacing Criterion (Diagonal) | 0.56 |
| Basic Luminous Shape | Circular |
| Luminous Length (0-180) | 0.00 ft |
| Luminous Width (90-270) | 0.33 ft (Diameter) |
| Luminous Height | 0.00 ft |

Zonal Lumen Summary

| Zone | Lumens |
|---------|--------|
| 0-10 | 149.62 |
| 10-20 | 241.43 |
| 20-30 | 236.63 |
| 30-40 | 221.79 |
| 40-50 | 43.23 |
| 50-60 | 11.54 |
| 60-70 | 9.11 |
| 70-80 | 4.12 |
| 80-90 | 0.77 |
| 90-100 | 0.00 |
| 100-110 | 0.00 |
| 110-120 | 0.00 |
| 120-130 | 0.00 |
| 130-140 | 0.00 |
| 140-150 | 0.00 |
| 150-160 | 0.00 |
| 160-170 | 0.00 |
| 170-180 | 0.00 |



Ceiling Mounting Height: 10 ft.

Grid Spacing: 5 ft.

In the interest of product improvement, BEGA reserves the right to make technical changes without notice.

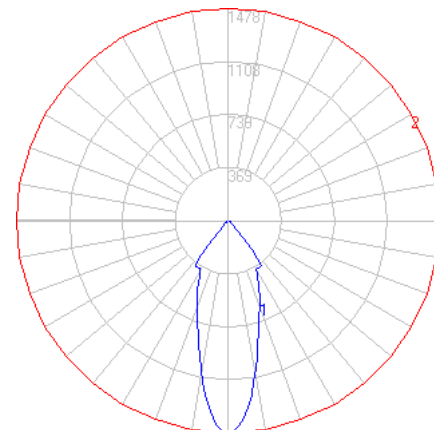
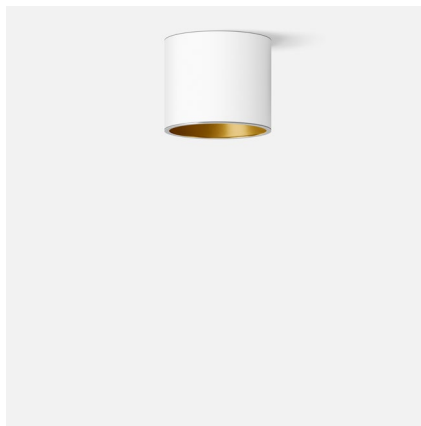
BEGA 1000 Bega Way, Carpinteria, CA 93013 (805)684-0533 Fax (805)566-9474 www.bega-us.com © Copyright BEGA-US 2020

06/25/2020

BEGA

File: 50677.4K3_BEGA_IES.ies

TEST: BE_50677.4K3
TEST LAB: BEGA
DATE: 11/26/2018
LUMINAIRE: 50 677.4K3
LAMP: 8.1W LED

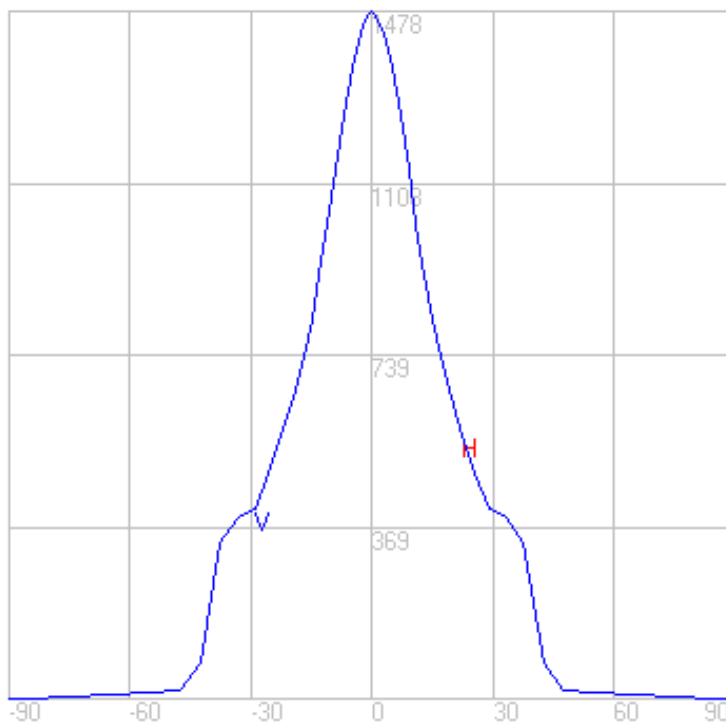
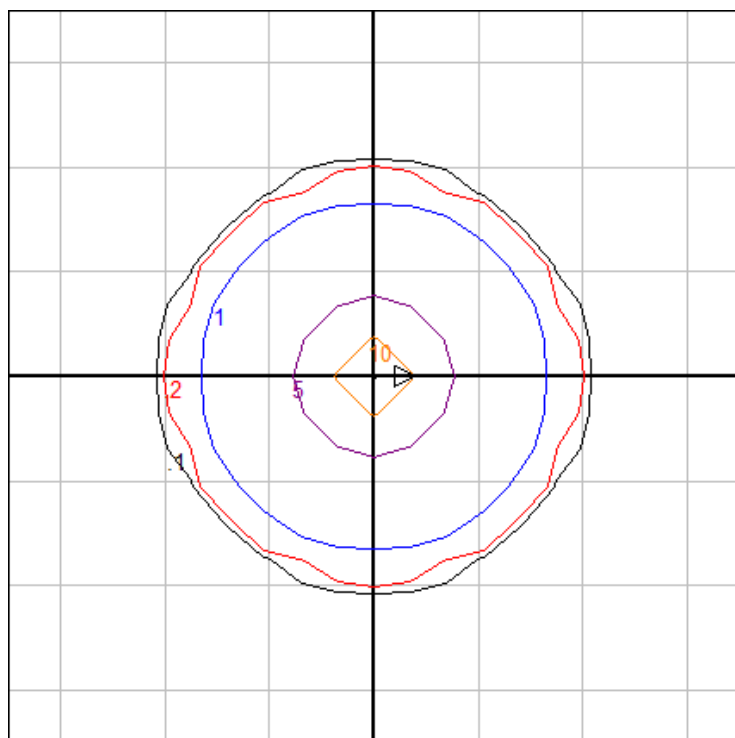


Characteristics

| | |
|---------------------------------|--------------------|
| Lumens Per Lamp | N.A. (absolute) |
| Total Lamp Lumens | N.A. (absolute) |
| Luminaire Lumens | 862 |
| Total Luminaire Efficiency | N.A. |
| Luminaire Efficacy Rating (LER) | 86 |
| Total Luminaire Watts | 10 |
| Ballast Factor | 1.00 |
| CIE Type | Direct |
| Spacing Criterion (0-180) | 0.54 |
| Spacing Criterion (90-270) | 0.54 |
| Spacing Criterion (Diagonal) | 0.68 |
| Basic Luminous Shape | Circular |
| Luminous Length (0-180) | 0.00 ft |
| Luminous Width (90-270) | 0.33 ft (Diameter) |
| Luminous Height | 0.00 ft |

Zonal Lumen Summary

| Zone | Lumens |
|---------|--------|
| 0-10 | 100.42 |
| 10-20 | 236.84 |
| 20-30 | 241.45 |
| 30-40 | 205.66 |
| 40-50 | 55.45 |
| 50-60 | 11.79 |
| 60-70 | 6.60 |
| 70-80 | 3.16 |
| 80-90 | 0.41 |
| 90-100 | 0.00 |
| 100-110 | 0.00 |
| 110-120 | 0.00 |
| 120-130 | 0.00 |
| 130-140 | 0.00 |
| 140-150 | 0.00 |
| 150-160 | 0.00 |
| 160-170 | 0.00 |
| 170-180 | 0.00 |



Ceiling Mounting Height: 10 ft.

Grid Spacing: 5 ft.

In the interest of product improvement, BEGA reserves the right to make technical changes without notice.

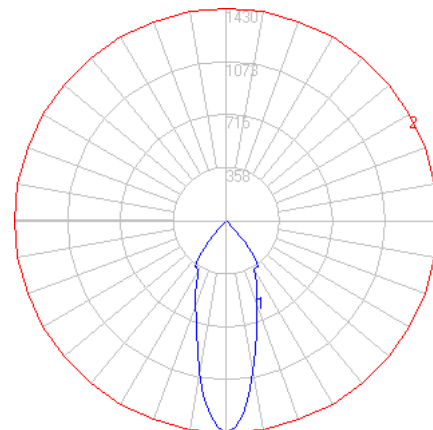
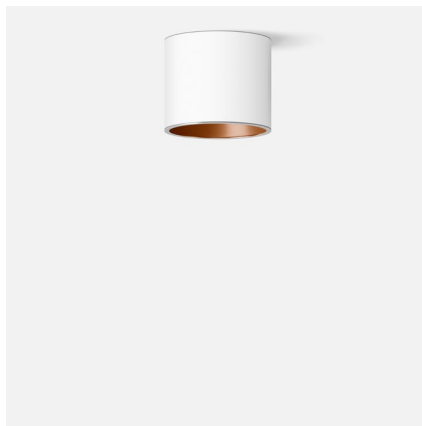
BEGA 1000 Bega Way, Carpinteria, CA 93013 (805)684-0533 Fax (805)566-9474 www.bega-us.com © Copyright BEGA-US 2020

06/25/2020

BEGA

File: 50677.6K3_BEGA_IES.ies

TEST: BE_50677.6K3
 TEST LAB: BEGA
 DATE: 11/26/2018
 LUMINAIRE: 50 677.26K3
 LAMP: 8.1W LED

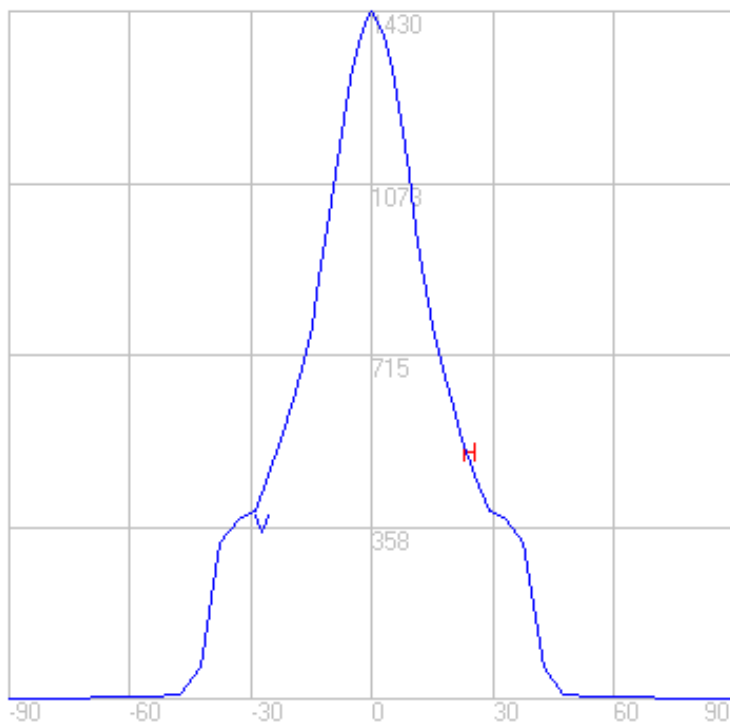
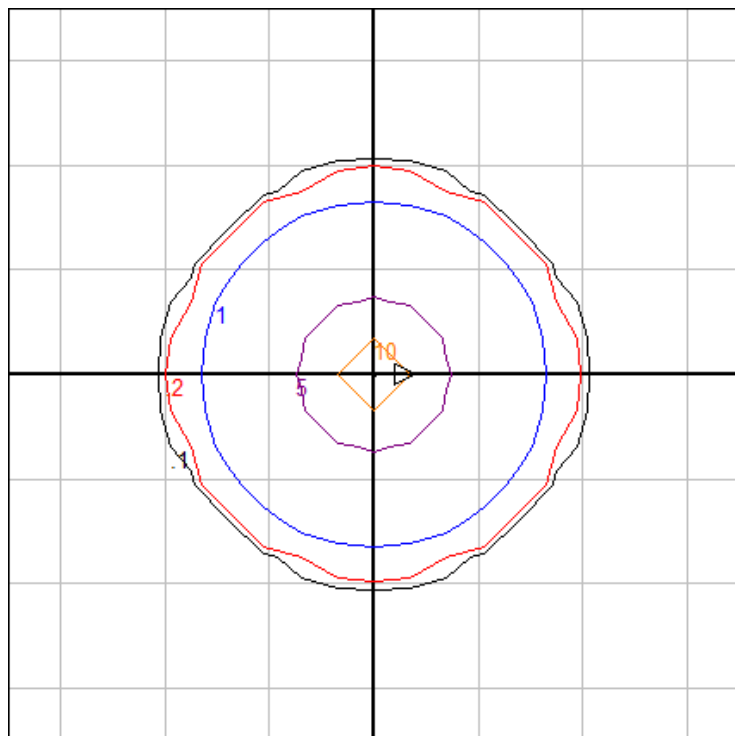


Characteristics

| | |
|---------------------------------|--------------------|
| Lumens Per Lamp | N.A. (absolute) |
| Total Lamp Lumens | N.A. (absolute) |
| Luminaire Lumens | 809 |
| Total Luminaire Efficiency | N.A. |
| Luminaire Efficacy Rating (LER) | 81 |
| Total Luminaire Watts | 10 |
| Ballast Factor | 1.00 |
| CIE Type | Direct |
| Spacing Criterion (0-180) | 0.54 |
| Spacing Criterion (90-270) | 0.54 |
| Spacing Criterion (Diagonal) | 0.66 |
| Basic Luminous Shape | Circular |
| Luminous Length (0-180) | 0.00 ft |
| Luminous Width (90-270) | 0.33 ft (Diameter) |
| Luminous Height | 0.00 ft |

Zonal Lumen Summary

| Zone | Lumens |
|---------|--------|
| 0-10 | 116.23 |
| 10-20 | 218.85 |
| 20-30 | 219.46 |
| 30-40 | 210.52 |
| 40-50 | 34.64 |
| 50-60 | 5.00 |
| 60-70 | 3.25 |
| 70-80 | 1.05 |
| 80-90 | 0.20 |
| 90-100 | 0.00 |
| 100-110 | 0.00 |
| 110-120 | 0.00 |
| 120-130 | 0.00 |
| 130-140 | 0.00 |
| 140-150 | 0.00 |
| 150-160 | 0.00 |
| 160-170 | 0.00 |
| 170-180 | 0.00 |



Ceiling Mounting Height: 10 ft.

Grid Spacing: 5 ft.

In the interest of product improvement, BEGA reserves the right to make technical changes without notice.

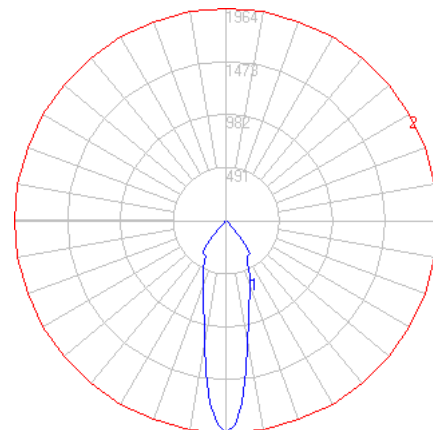
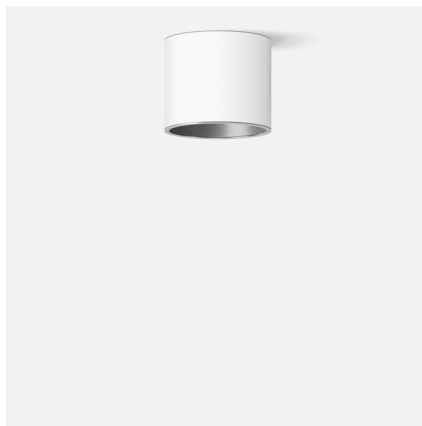
BEGA 1000 Bega Way, Carpinteria, CA 93013 (805)684-0533 Fax (805)566-9474 www.bega-us.com © Copyright BEGA-US 2020

06/25/2020

BEGA

File: 50677.2K27_BEGA_IES.ies

TEST: BE_50677.2K3
TEST LAB: BEGA
DATE: 11/26/2018
LUMINAIRE: 50 677.2K27
LAMP: 8.1W LED

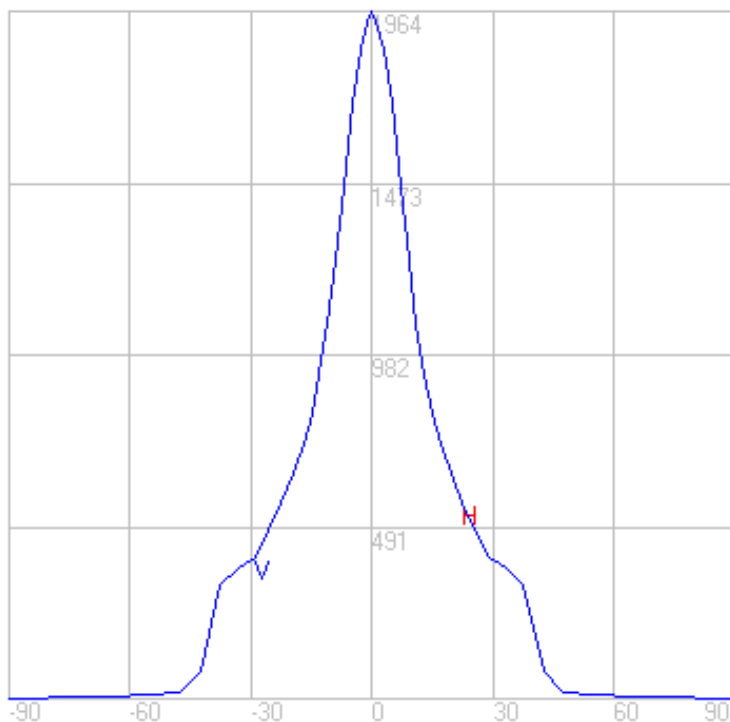
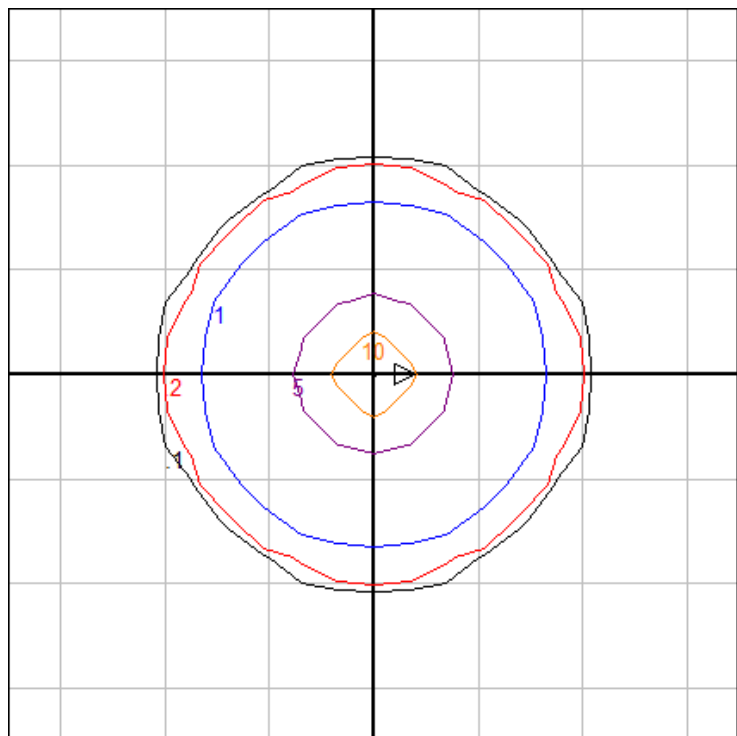


Characteristics

| | |
|---------------------------------|--------------------|
| Lumens Per Lamp | N.A. (absolute) |
| Total Lamp Lumens | N.A. (absolute) |
| Luminaire Lumens | 882 |
| Total Luminaire Efficiency | N.A. |
| Luminaire Efficacy Rating (LER) | 88 |
| Total Luminaire Watts | 10 |
| Ballast Factor | 1.00 |
| CIE Type | Direct |
| Spacing Criterion (0-180) | 0.42 |
| Spacing Criterion (90-270) | 0.42 |
| Spacing Criterion (Diagonal) | 0.56 |
| Basic Luminous Shape | Circular |
| Luminous Length (0-180) | 0.00 ft |
| Luminous Width (90-270) | 0.33 ft (Diameter) |
| Luminous Height | 0.00 ft |

Zonal Lumen Summary

| Zone | Lumens |
|---------|--------|
| 0-10 | 143.63 |
| 10-20 | 231.77 |
| 20-30 | 227.17 |
| 30-40 | 212.91 |
| 40-50 | 41.50 |
| 50-60 | 11.08 |
| 60-70 | 8.75 |
| 70-80 | 3.95 |
| 80-90 | 0.74 |
| 90-100 | 0.00 |
| 100-110 | 0.00 |
| 110-120 | 0.00 |
| 120-130 | 0.00 |
| 130-140 | 0.00 |
| 140-150 | 0.00 |
| 150-160 | 0.00 |
| 160-170 | 0.00 |
| 170-180 | 0.00 |



Ceiling Mounting Height: 10 ft.

Grid Spacing: 5 ft.

In the interest of product improvement, BEGA reserves the right to make technical changes without notice.

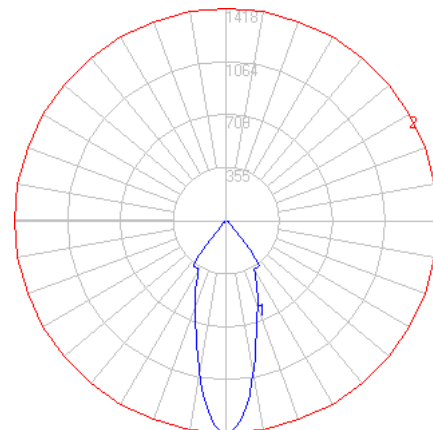
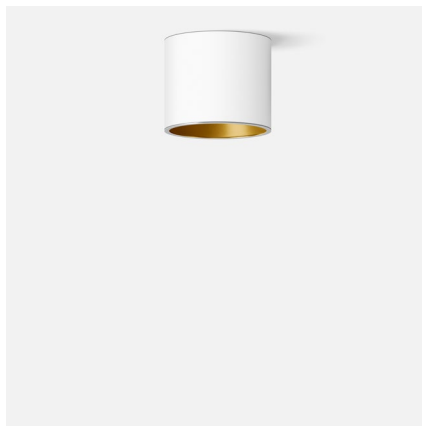
BEGA 1000 Bega Way, Carpinteria, CA 93013 (805)684-0533 Fax (805)566-9474 www.bega-us.com © Copyright BEGA-US 2020

06/25/2020

BEGA

File: 50677.4K27_BEGA_IES.ies

TEST: BE_50677.4K3
 TEST LAB: BEGA
 DATE: 11/26/2018
 LUMINAIRE: 50 677.4K27
 LAMP: 8.1W LED

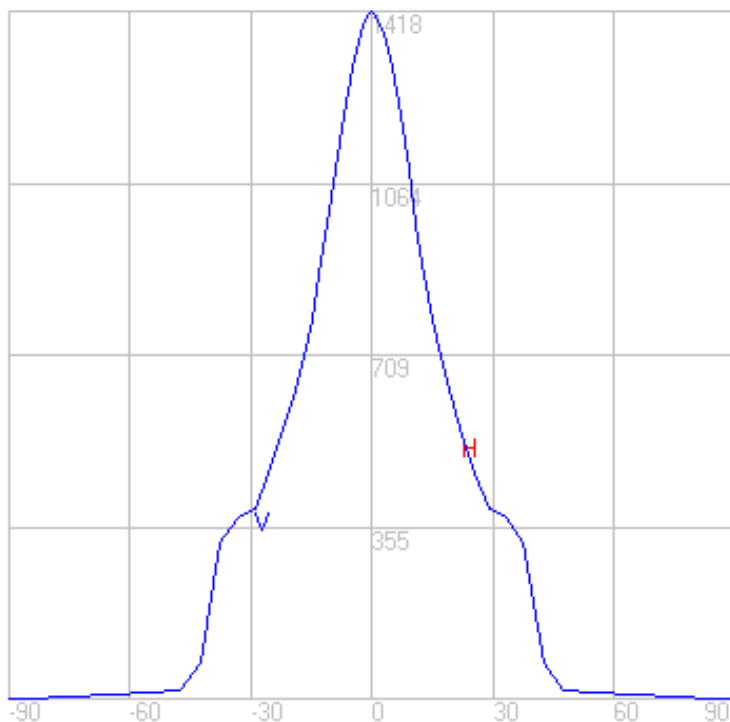
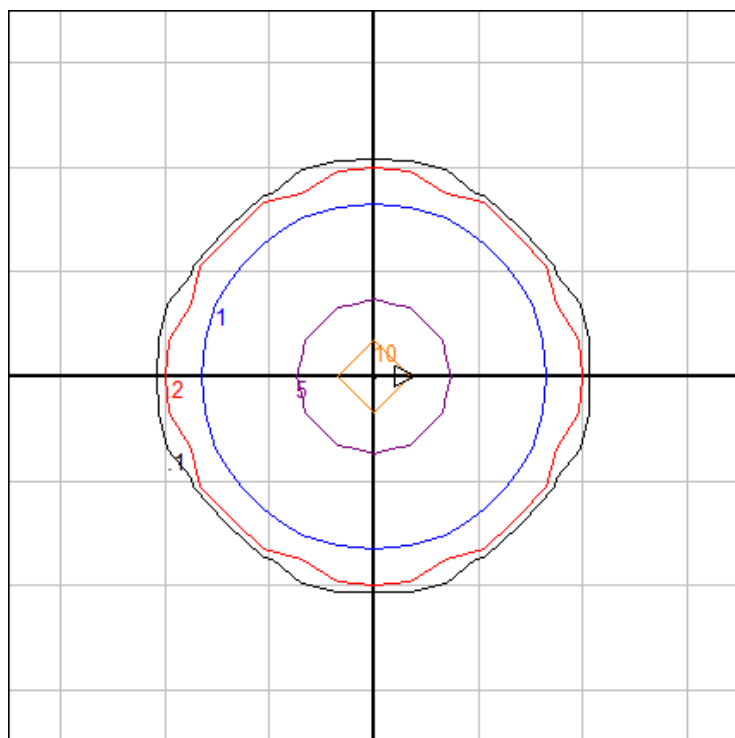


Characteristics

| | |
|---------------------------------|--------------------|
| Lumens Per Lamp | N.A. (absolute) |
| Total Lamp Lumens | N.A. (absolute) |
| Luminaire Lumens | 827 |
| Total Luminaire Efficiency | N.A. |
| Luminaire Efficacy Rating (LER) | 83 |
| Total Luminaire Watts | 10 |
| Ballast Factor | 1.00 |
| CIE Type | Direct |
| Spacing Criterion (0-180) | 0.54 |
| Spacing Criterion (90-270) | 0.54 |
| Spacing Criterion (Diagonal) | 0.68 |
| Basic Luminous Shape | Circular |
| Luminous Length (0-180) | 0.00 ft |
| Luminous Width (90-270) | 0.33 ft (Diameter) |
| Luminous Height | 0.00 ft |

Zonal Lumen Summary

| Zone | Lumens |
|---------|--------|
| 0-10 | 96.40 |
| 10-20 | 227.36 |
| 20-30 | 231.79 |
| 30-40 | 197.43 |
| 40-50 | 53.23 |
| 50-60 | 11.32 |
| 60-70 | 6.34 |
| 70-80 | 3.03 |
| 80-90 | 0.39 |
| 90-100 | 0.00 |
| 100-110 | 0.00 |
| 110-120 | 0.00 |
| 120-130 | 0.00 |
| 130-140 | 0.00 |
| 140-150 | 0.00 |
| 150-160 | 0.00 |
| 160-170 | 0.00 |
| 170-180 | 0.00 |



Ceiling Mounting Height: 10 ft.

Grid Spacing: 5 ft.

In the interest of product improvement, BEGA reserves the right to make technical changes without notice.

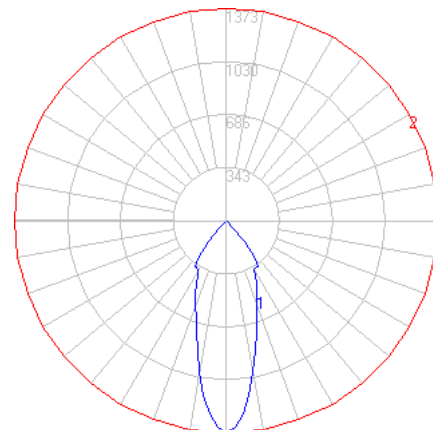
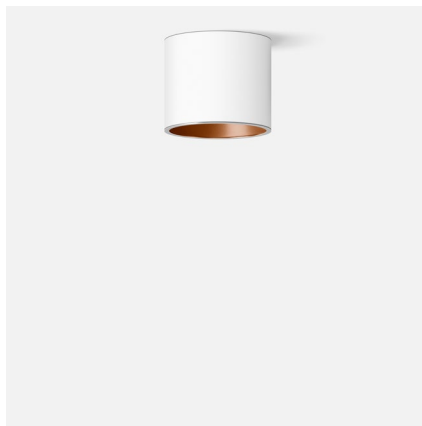
BEGA 1000 Bega Way, Carpinteria, CA 93013 (805)684-0533 Fax (805)566-9474 www.bega-us.com © Copyright BEGA-US 2020

06/25/2020

BEGA

File: 50677.6K27_BEGA_IES.ies

TEST: BE_50677.6K3
TEST LAB: BEGA
DATE: 11/26/2018
LUMINAIRE: 50 677.6K27
LAMP: 8.1W LED

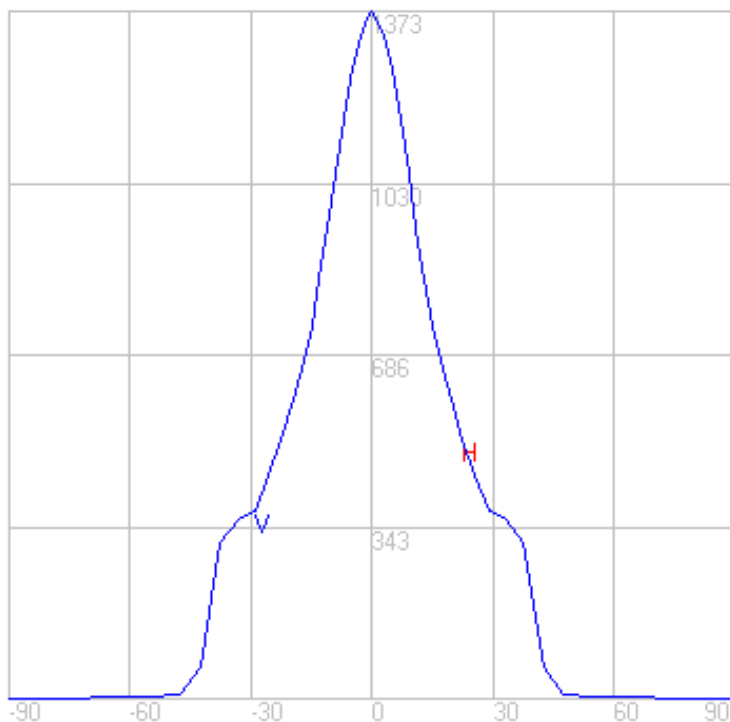
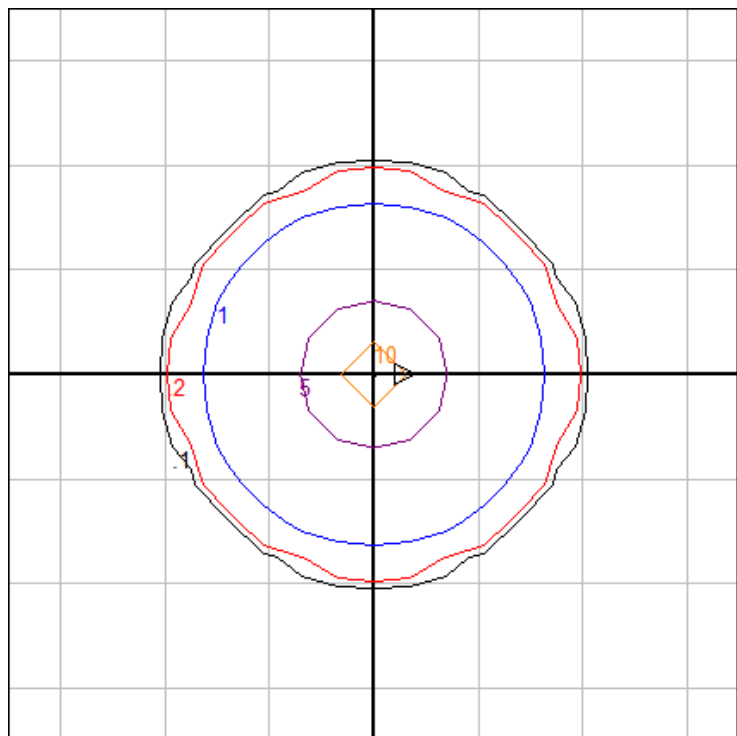


Characteristics

| | |
|---------------------------------|--------------------|
| Lumens Per Lamp | N.A. (absolute) |
| Total Lamp Lumens | N.A. (absolute) |
| Luminaire Lumens | 777 |
| Total Luminaire Efficiency | N.A. |
| Luminaire Efficacy Rating (LER) | 78 |
| Total Luminaire Watts | 10 |
| Ballast Factor | 1.00 |
| CIE Type | Direct |
| Spacing Criterion (0-180) | 0.54 |
| Spacing Criterion (90-270) | 0.54 |
| Spacing Criterion (Diagonal) | 0.66 |
| Basic Luminous Shape | Circular |
| Luminous Length (0-180) | 0.00 ft |
| Luminous Width (90-270) | 0.33 ft (Diameter) |
| Luminous Height | 0.00 ft |

Zonal Lumen Summary

| Zone | Lumens |
|---------|--------|
| 0-10 | 111.58 |
| 10-20 | 210.10 |
| 20-30 | 210.68 |
| 30-40 | 202.10 |
| 40-50 | 33.26 |
| 50-60 | 4.80 |
| 60-70 | 3.12 |
| 70-80 | 1.01 |
| 80-90 | 0.20 |
| 90-100 | 0.00 |
| 100-110 | 0.00 |
| 110-120 | 0.00 |
| 120-130 | 0.00 |
| 130-140 | 0.00 |
| 140-150 | 0.00 |
| 150-160 | 0.00 |
| 160-170 | 0.00 |
| 170-180 | 0.00 |



Ceiling Mounting Height: 10 ft.

Grid Spacing: 5 ft.

In the interest of product improvement, BEGA reserves the right to make technical changes without notice.

BEGA 1000 Bega Way, Carpinteria, CA 93013 (805)684-0533 Fax (805)566-9474 www.bega-us.com © Copyright BEGA-US 2020

06/25/2020