

**Application**

The thick-walled crystal glass of this downlight brings sparkle and added interest to any ceiling surface, while the inner frosted section provides glare control and minimizes the direct view of the LED source.

**Materials**

Crystal glass diffuser, partially frosted with screw neck  
 Reflector surface made of pure anodized aluminum  
 Die-cast aluminum housing

**NRTL** listed to North American Standards, suitable for damp locations  
 Weight: 6.4 lbs

**Electrical**

Operating voltage	120-277VAC
Minimum start temperature	-40° C
LED module wattage	17.0 W
System wattage	19.5 W
Controllability	0-10V dimmable
Color rendering index	Ra > 90
Luminaire lumens	1,683 lumens (4000K)
LED service life (L70)	60,000 hours

**LED color temperature**

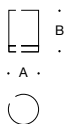
- 4000K - Product number + **K4**
- 3500K - Product number + **K35**
- 3000K - Product number + **K3**
- 2700K - Product number + **K27**

**BEGA** can supply you with suitable LED replacement modules for up to 20 years after the purchase of LED luminaires - see website for details

**Finish**

Select the desired material finish by using appropriate code number as suffix.

Available finishes	White	Code number <b>.1</b>
	Stainless steel	Code number <b>.2</b>



**Ceiling luminaire - Downlight**

	LED	A	B
<b>50515</b>	17.0W	7	6 7/8

