

Application

The thick-walled crystal glass of this downlight brings sparkle and added interest to any ceiling surface, while the inner frosted section provides glare control and minimizes the direct view of the LED source.

Materials

Luminaire housing constructed of aluminum alloy
 Partially frosted crystal glass
 Reflector made of pure anodized aluminum

NRTL listed to North American Standards, suitable for damp locations
 Weight: 2.9lbs

Electrical

Operating voltage	120-277VAC
Minimum start temperature	-40° C
LED module wattage	8.1 W
System wattage	10.0W
Controllability	0-10V, TRIAC, and ELV dimmable
Color rendering index	Ra > 90
Luminaire lumens	871 lumens (4000K)
LED service life (L70)	60,000 hours

LED color temperature

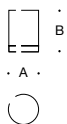
- 4000K - Product number + **K4**
- 3500K - Product number + **K35**
- 3000K - Product number + **K3**
- 2700K - Product number + **K27**

BEGA can supply you with suitable LED replacement modules for up to 20 years after the purchase of LED luminaires - see website for details

Finish

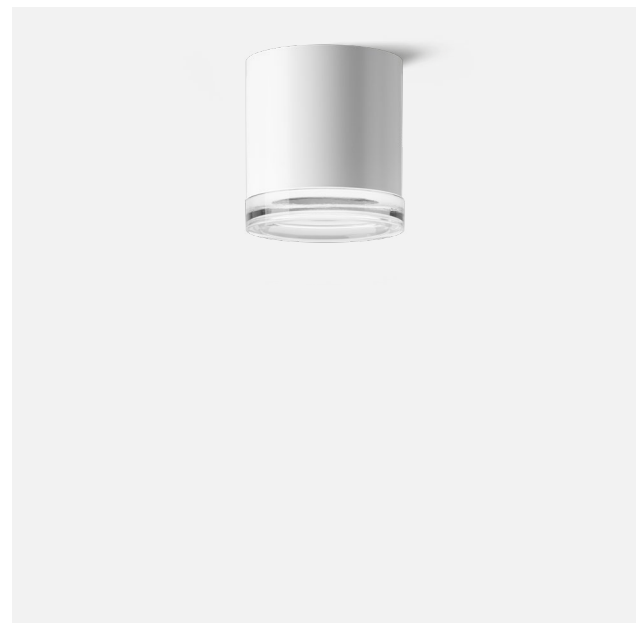
Select the desired material finish by using appropriate code number as suffix.

Available finishes	White	Code number .1
	Stainless steel	Code number .2



Ceiling luminaire - Downlight

	LED	A	B
50511	8.1W	4 5/8	5 1/4



Type:
 BEGA Product:
 Project:
 Modified: