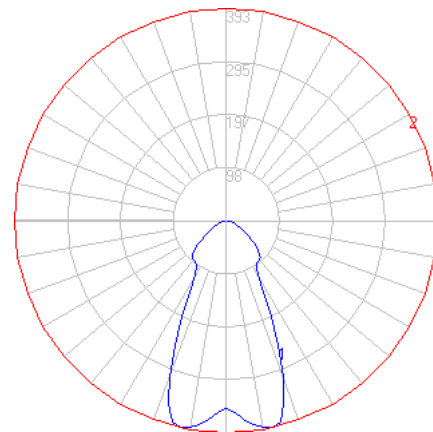


BEGA

File: 50422.2K4_BEGA_IES.ies

TEST: BE_50422.2K3
TEST LAB: BEGA
DATE: 09/13/2017
LUMINAIRE: 50422.2K4
LAMP: 7.2W LED

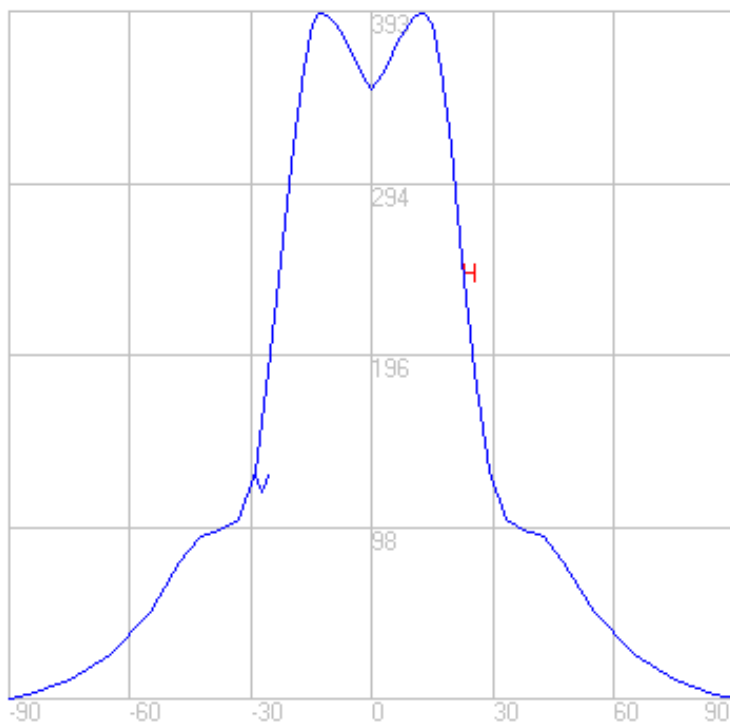
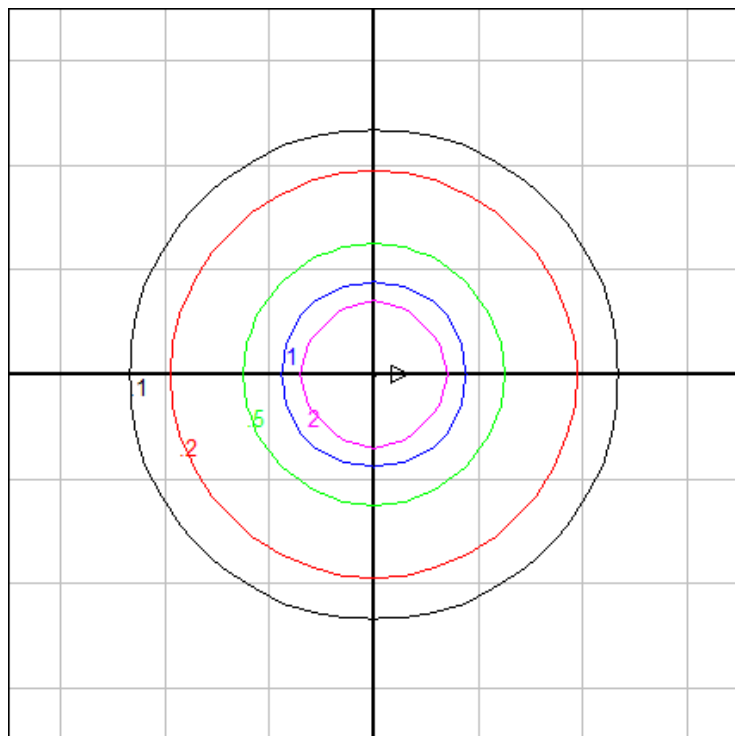


Characteristics

Lumens Per Lamp	N.A. (absolute)
Total Lamp Lumens	N.A. (absolute)
Luminaire Lumens	445
Total Luminaire Efficiency	N.A.
Luminaire Efficacy Rating (LER)	45
Total Luminaire Watts	10
Ballast Factor	1.00
CIE Type	Direct
Spacing Criterion (0-180)	0.88
Spacing Criterion (90-270)	0.88
Spacing Criterion (Diagonal)	0.80
Basic Luminous Shape	Circular
Luminous Length (0-180)	0.00 ft
Luminous Width (90-270)	0.16 ft (Diameter)
Luminous Height	0.00 ft

Zonal Lumen Summary

Zone	Lumens
0-10	35.85
10-20	103.81
20-30	90.84
30-40	63.30
40-50	66.02
50-60	45.04
60-70	25.12
70-80	11.80
80-90	2.96
90-100	0.00
100-110	0.00
110-120	0.00
120-130	0.00
130-140	0.00
140-150	0.00
150-160	0.00
160-170	0.00
170-180	0.00



Mounting Height: 10 ft.

Grid Spacing: 6 ft.

In the interest of product improvement, BEGA reserves the right to make technical changes without notice.

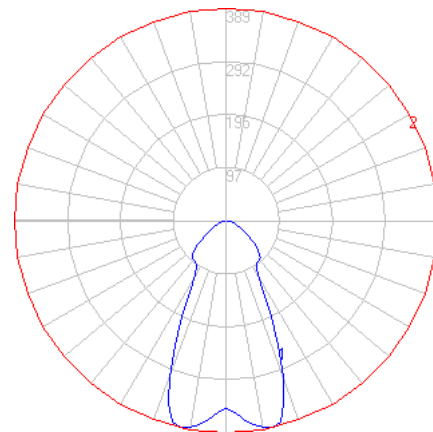
BEGA 1000 Bega Way, Carpinteria, CA 93013 (805)684-0533 Fax (805)566-9474 www.bega-us.com © Copyright BEGA-US 2020

07/16/20

BEGA

File: 50422.2K35_BEGA_IES.ies

TEST: BE_50422.2K3
TEST LAB: BEGA
DATE: 09/13/2017
LUMINAIRE: 50422.2K35
LAMP: 7.2W LED

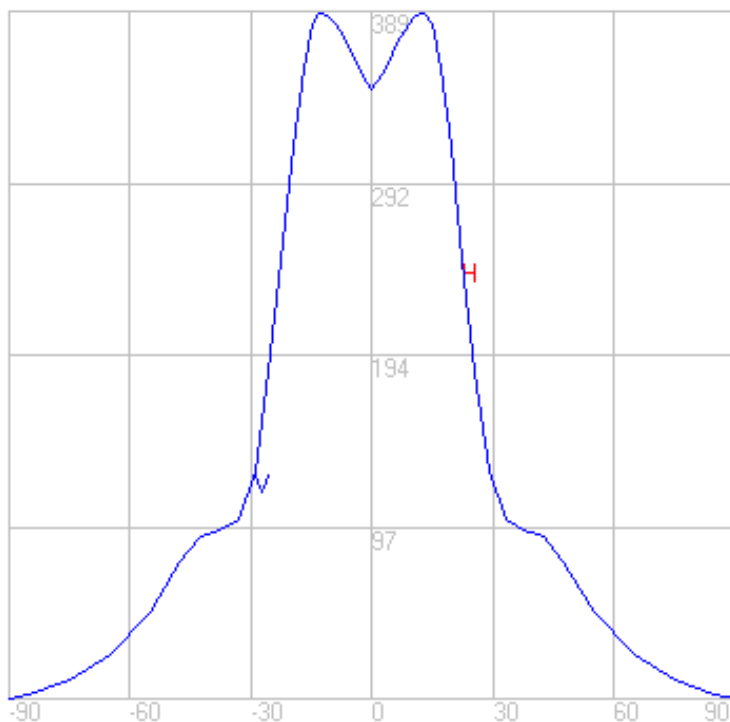
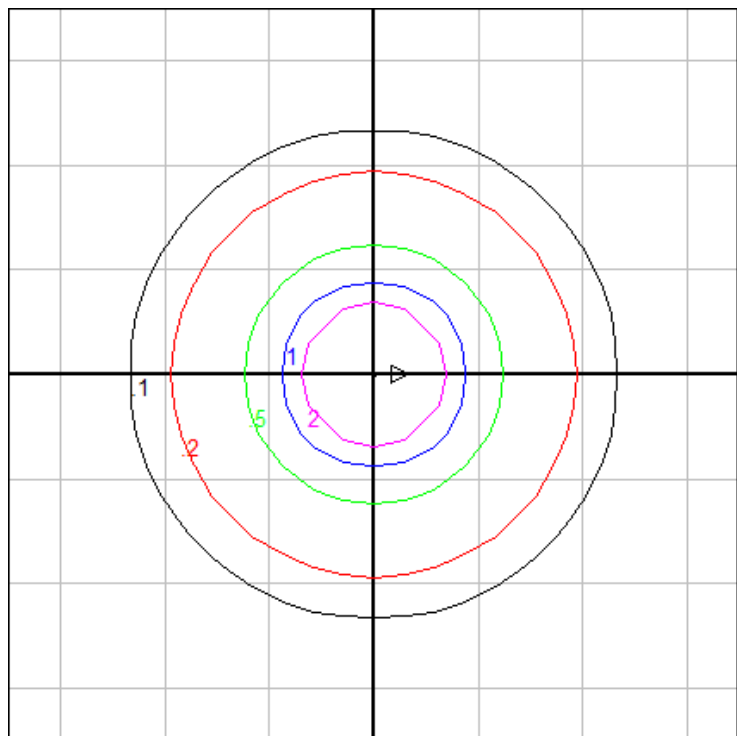


Characteristics

Lumens Per Lamp	N.A. (absolute)
Total Lamp Lumens	N.A. (absolute)
Luminaire Lumens	440
Total Luminaire Efficiency	N.A.
Luminaire Efficacy Rating (LER)	44
Total Luminaire Watts	10
Ballast Factor	1.00
CIE Type	Direct
Spacing Criterion (0-180)	0.88
Spacing Criterion (90-270)	0.88
Spacing Criterion (Diagonal)	0.80
Basic Luminous Shape	Circular
Luminous Length (0-180)	0.00 ft
Luminous Width (90-270)	0.16 ft (Diameter)
Luminous Height	0.00 ft

Zonal Lumen Summary

Zone	Lumens
0-10	35.51
10-20	102.82
20-30	89.97
30-40	62.69
40-50	65.39
50-60	44.61
60-70	24.88
70-80	11.69
80-90	2.93
90-100	0.00
100-110	0.00
110-120	0.00
120-130	0.00
130-140	0.00
140-150	0.00
150-160	0.00
160-170	0.00
170-180	0.00



Mounting Height: 10 ft.

Grid Spacing: 6 ft.

In the interest of product improvement, BEGA reserves the right to make technical changes without notice.

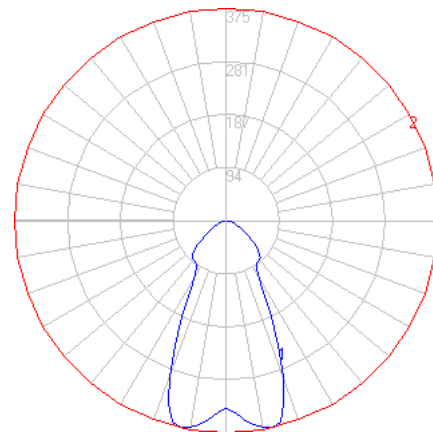
BEGA 1000 Bega Way, Carpinteria, CA 93013 (805)684-0533 Fax (805)566-9474 www.bega-us.com © Copyright BEGA-US 2020

07/16/20

BEGA

File: 50422.2K3_BEGA_IES.ies

TEST: BE_50422.2K3
TEST LAB: BEGA
DATE: 09/13/2017
LUMINAIRE: 50422.2K3
LAMP: 7.2W LED

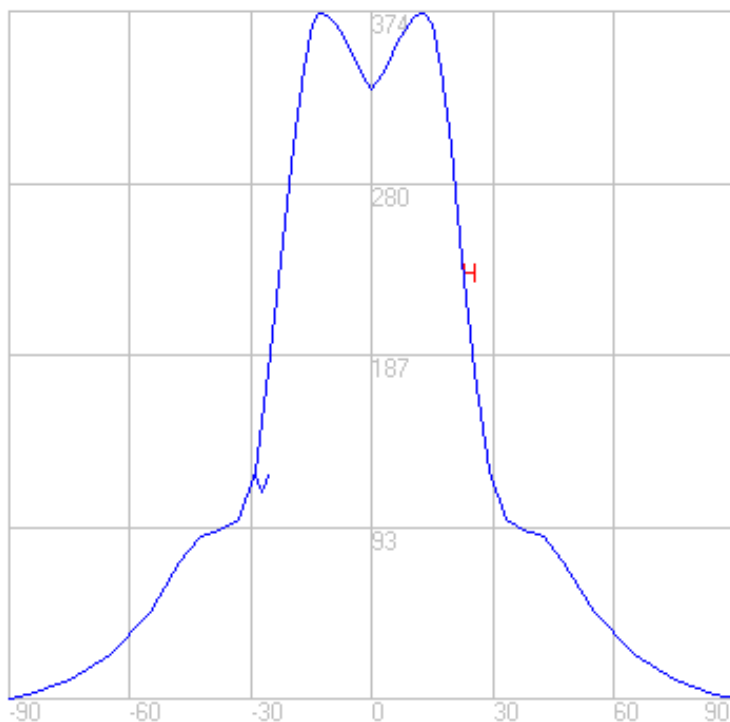
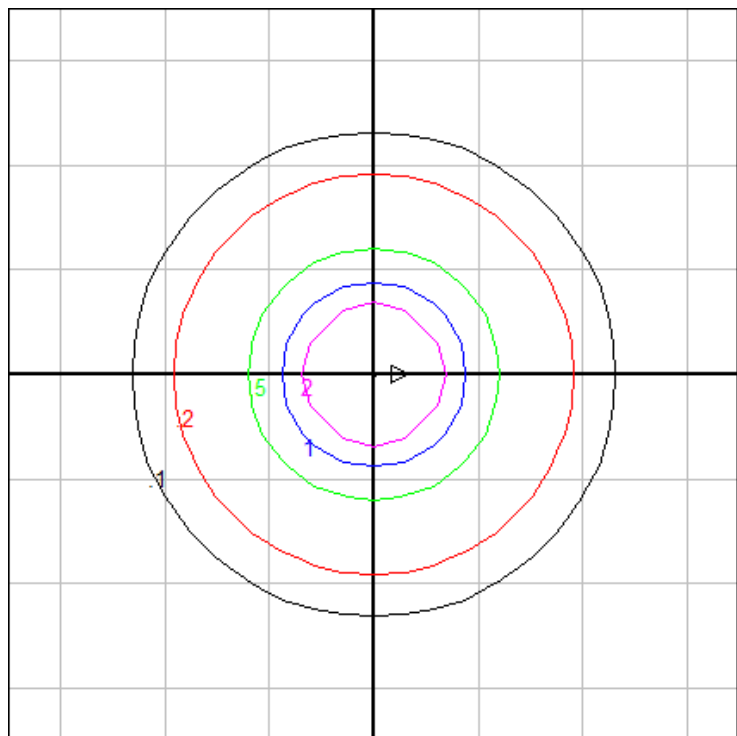


Characteristics

Lumens Per Lamp	N.A. (absolute)
Total Lamp Lumens	N.A. (absolute)
Luminaire Lumens	424
Total Luminaire Efficiency	N.A.
Luminaire Efficacy Rating (LER)	42
Total Luminaire Watts	10
Ballast Factor	1.00
CIE Type	Direct
Spacing Criterion (0-180)	0.88
Spacing Criterion (90-270)	0.88
Spacing Criterion (Diagonal)	0.80
Basic Luminous Shape	Circular
Luminous Length (0-180)	0.00 ft
Luminous Width (90-270)	0.16 ft (Diameter)
Luminous Height	0.00 ft

Zonal Lumen Summary

Zone	Lumens
0-10	34.15
10-20	98.87
20-30	86.51
30-40	60.28
40-50	62.88
50-60	42.89
60-70	23.92
70-80	11.24
80-90	2.82
90-100	0.00
100-110	0.00
110-120	0.00
120-130	0.00
130-140	0.00
140-150	0.00
150-160	0.00
160-170	0.00
170-180	0.00



Mounting Height: 10 ft.

Grid Spacing: 6 ft.

In the interest of product improvement, BEGA reserves the right to make technical changes without notice.

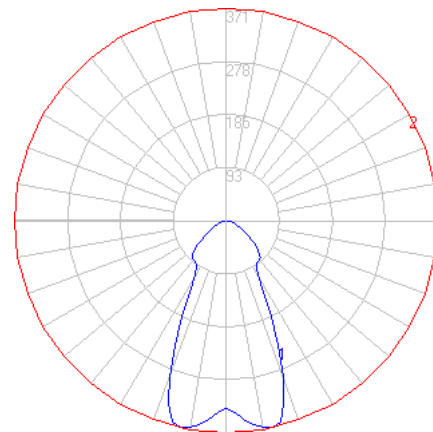
BEGA 1000 Bega Way, Carpinteria, CA 93013 (805)684-0533 Fax (805)566-9474 www.bega-us.com © Copyright BEGA-US 2020

07/16/20

BEGA

File: 50422.2K27_BEGA_IES.ies

TEST: BE_50422.2K3
TEST LAB: BEGA
DATE: 09/13/2017
LUMINAIRE: 50422.2K27
LAMP: 7.2W LED

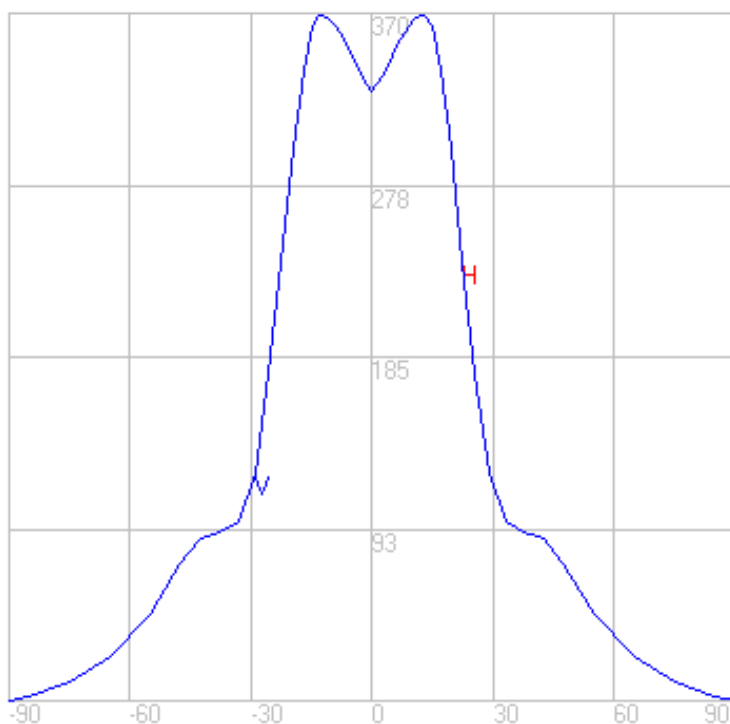
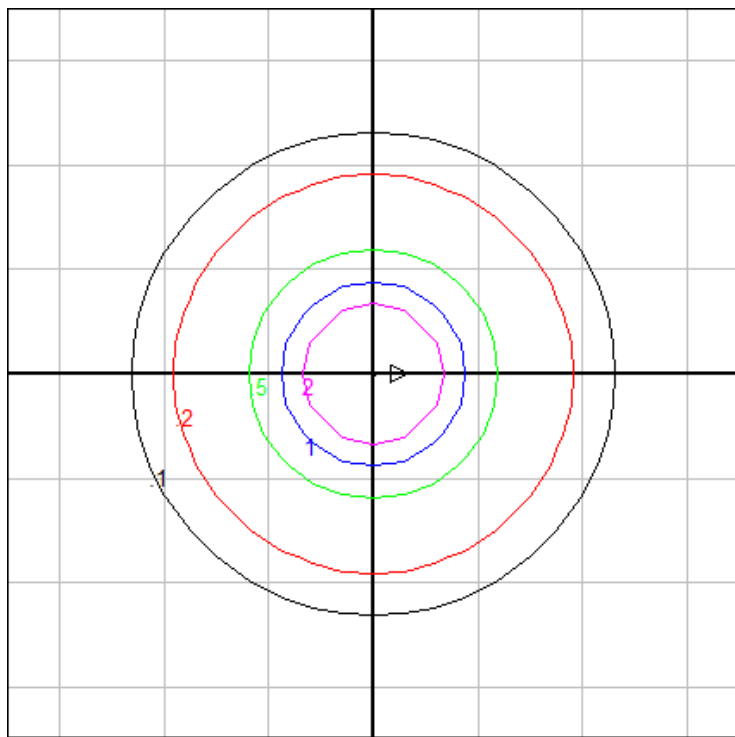


Characteristics

Lumens Per Lamp	N.A. (absolute)
Total Lamp Lumens	N.A. (absolute)
Luminaire Lumens	419
Total Luminaire Efficiency	N.A.
Luminaire Efficacy Rating (LER)	42
Total Luminaire Watts	10
Ballast Factor	1.00
CIE Type	Direct
Spacing Criterion (0-180)	0.88
Spacing Criterion (90-270)	0.88
Spacing Criterion (Diagonal)	0.80
Basic Luminous Shape	Circular
Luminous Length (0-180)	0.00 ft
Luminous Width (90-270)	0.16 ft (Diameter)
Luminous Height	0.00 ft

Zonal Lumen Summary

Zone	Lumens
0-10	33.81
10-20	97.88
20-30	85.65
30-40	59.68
40-50	62.25
50-60	42.46
60-70	23.69
70-80	11.13
80-90	2.79
90-100	0.00
100-110	0.00
110-120	0.00
120-130	0.00
130-140	0.00
140-150	0.00
150-160	0.00
160-170	0.00
170-180	0.00



Mounting Height: 10 ft.

Grid Spacing: 6 ft.

In the interest of product improvement, BEGA reserves the right to make technical changes without notice.

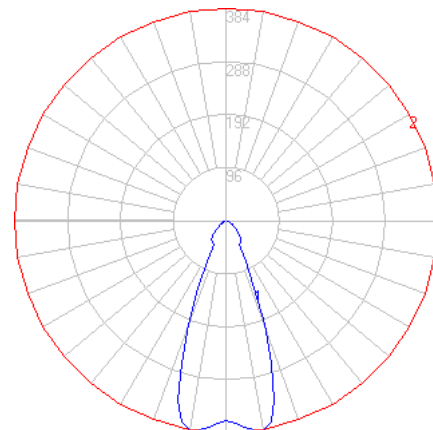
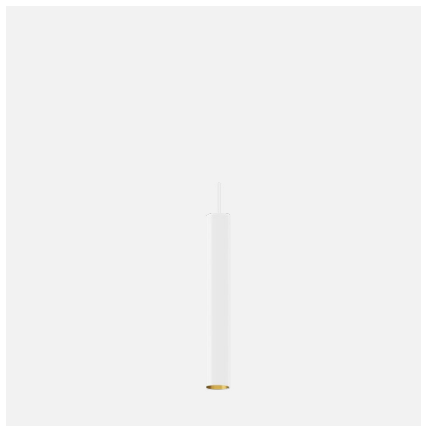
BEGA 1000 Bega Way, Carpinteria, CA 93013 (805)684-0533 Fax (805)566-9474 www.bega-us.com © Copyright BEGA-US 2020

07/16/20

BEGA

File: 50422.4K4_BEGA_IES.ies

TEST: BE_50422.4K3
TEST LAB: BEGA
DATE: 09/13/2017
LUMINAIRE: 50422.4K4
LAMP: 7.2W LED

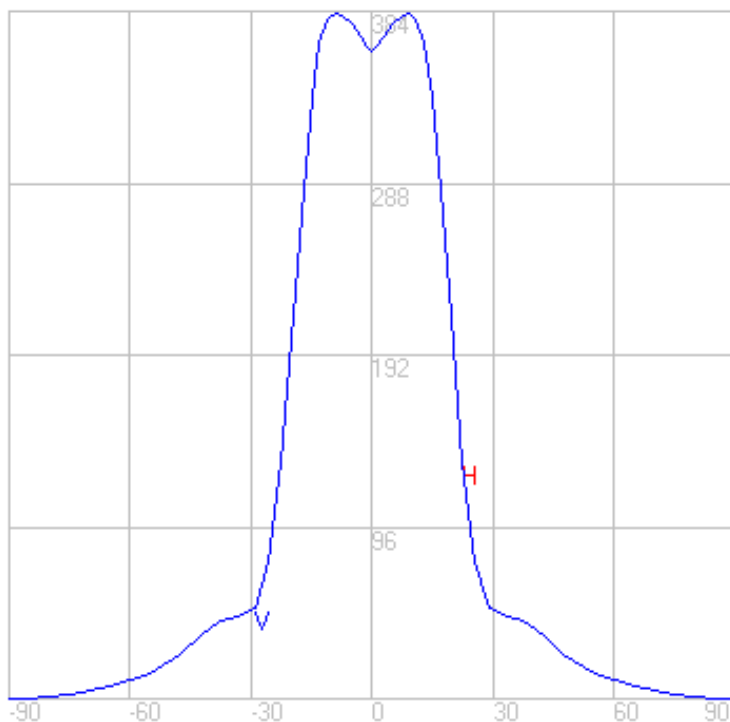
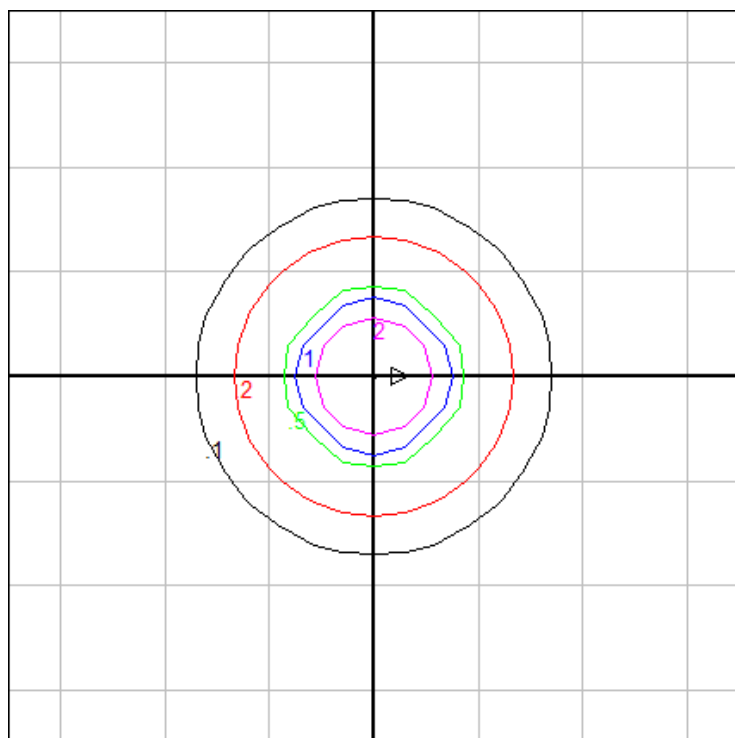


Characteristics

Lumens Per Lamp	N.A. (absolute)
Total Lamp Lumens	N.A. (absolute)
Luminaire Lumens	242
Total Luminaire Efficiency	N.A.
Luminaire Efficacy Rating (LER)	24
Total Luminaire Watts	10
Ballast Factor	1.00
CIE Type	Direct
Spacing Criterion (0-180)	0.72
Spacing Criterion (90-270)	0.72
Spacing Criterion (Diagonal)	0.62
Basic Luminous Shape	Circular
Luminous Length (0-180)	0.00 ft
Luminous Width (90-270)	0.16 ft (Diameter)
Luminous Height	0.00 ft

Zonal Lumen Summary

Zone	Lumens
0-10	36.16
10-20	87.48
20-30	43.49
30-40	28.20
40-50	23.19
50-60	13.11
60-70	6.79
70-80	2.93
80-90	0.66
90-100	0.00
100-110	0.00
110-120	0.00
120-130	0.00
130-140	0.00
140-150	0.00
150-160	0.00
160-170	0.00
170-180	0.00



Mounting Height: 10 ft.

Grid Spacing: 6 ft.

In the interest of product improvement, BEGA reserves the right to make technical changes without notice.

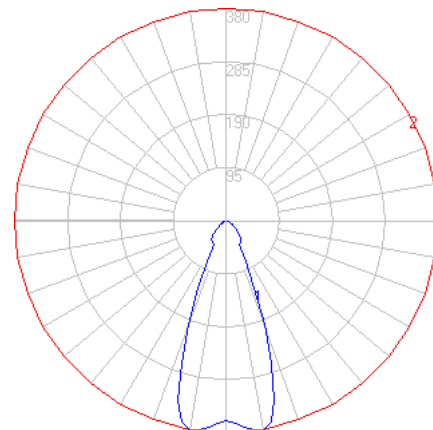
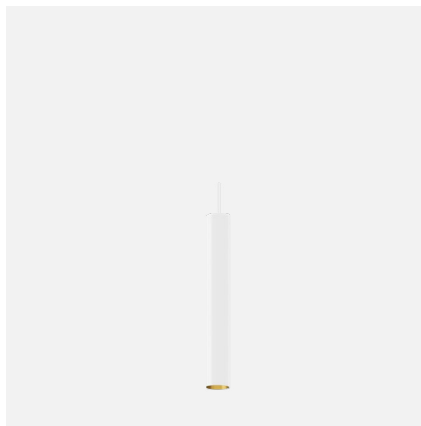
BEGA 1000 Bega Way, Carpinteria, CA 93013 (805)684-0533 Fax (805)566-9474 www.bega-us.com © Copyright BEGA-US 2020

07/16/20

BEGA

File: 50422.4K35_BEGA_IES.ies

TEST: BE_50422.4K3
TEST LAB: BEGA
DATE: 09/13/2017
LUMINAIRE: 50422.4K35
LAMP: 7.2W LED

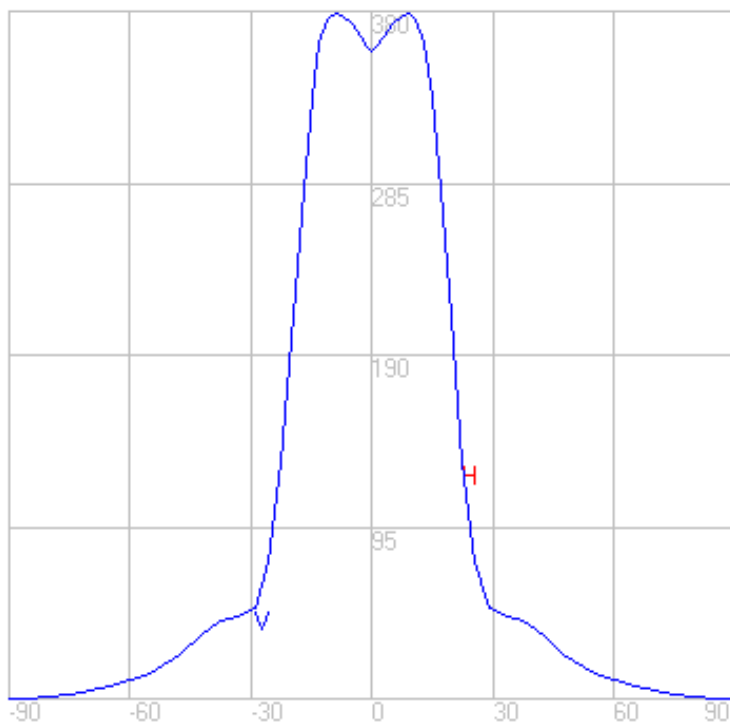
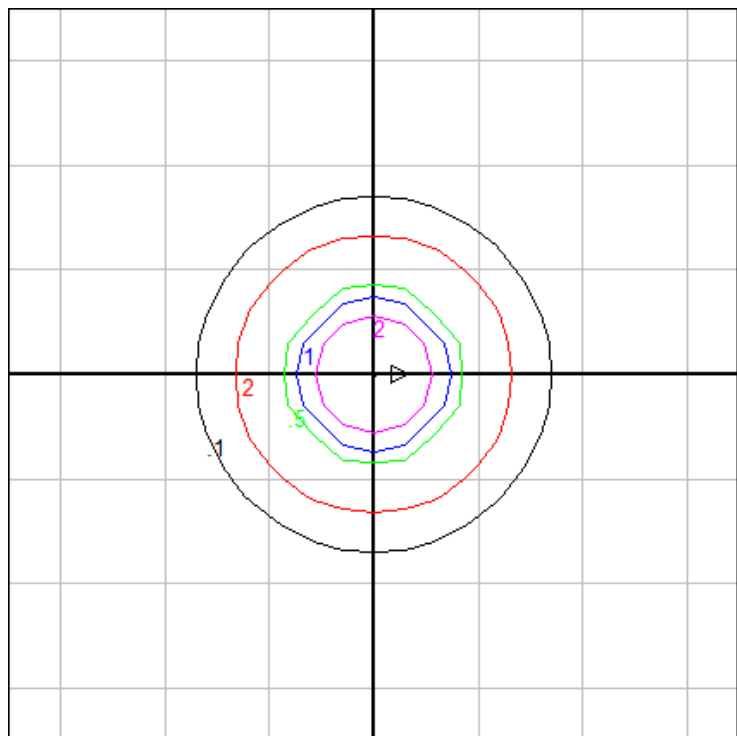


Characteristics

Lumens Per Lamp	N.A. (absolute)
Total Lamp Lumens	N.A. (absolute)
Luminaire Lumens	240
Total Luminaire Efficiency	N.A.
Luminaire Efficacy Rating (LER)	24
Total Luminaire Watts	10
Ballast Factor	1.00
CIE Type	Direct
Spacing Criterion (0-180)	0.72
Spacing Criterion (90-270)	0.72
Spacing Criterion (Diagonal)	0.62
Basic Luminous Shape	Circular
Luminous Length (0-180)	0.00 ft
Luminous Width (90-270)	0.16 ft (Diameter)
Luminous Height	0.00 ft

Zonal Lumen Summary

Zone	Lumens
0-10	35.81
10-20	86.64
20-30	43.08
30-40	27.93
40-50	22.96
50-60	12.98
60-70	6.73
70-80	2.90
80-90	0.65
90-100	0.00
100-110	0.00
110-120	0.00
120-130	0.00
130-140	0.00
140-150	0.00
150-160	0.00
160-170	0.00
170-180	0.00



Mounting Height: 10 ft.

Grid Spacing: 6 ft.

In the interest of product improvement, BEGA reserves the right to make technical changes without notice.

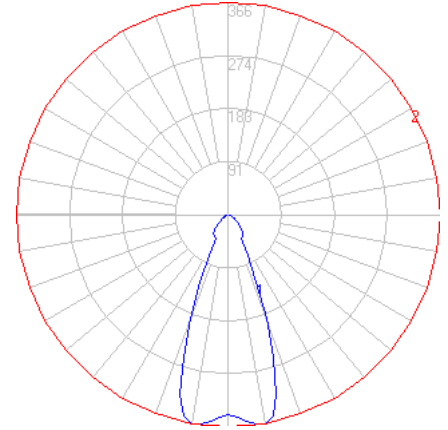
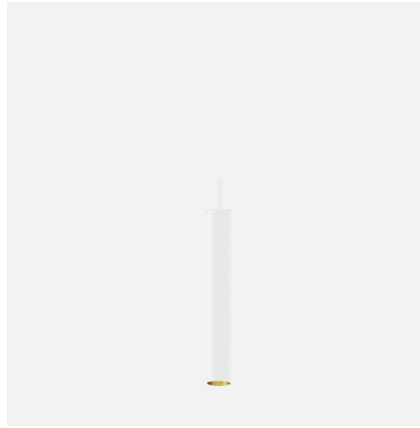
BEGA 1000 Bega Way, Carpinteria, CA 93013 (805)684-0533 Fax (805)566-9474 www.bega-us.com © Copyright BEGA-US 2020

07/16/20

BEGA

File: 50422.4K3_BEGA_IES.ies

TEST: BE_50422.4K3
TEST LAB: BEGA
DATE: 09/13/2017
LUMINAIRE: 50422.4K3
LAMP: 7.2W LED

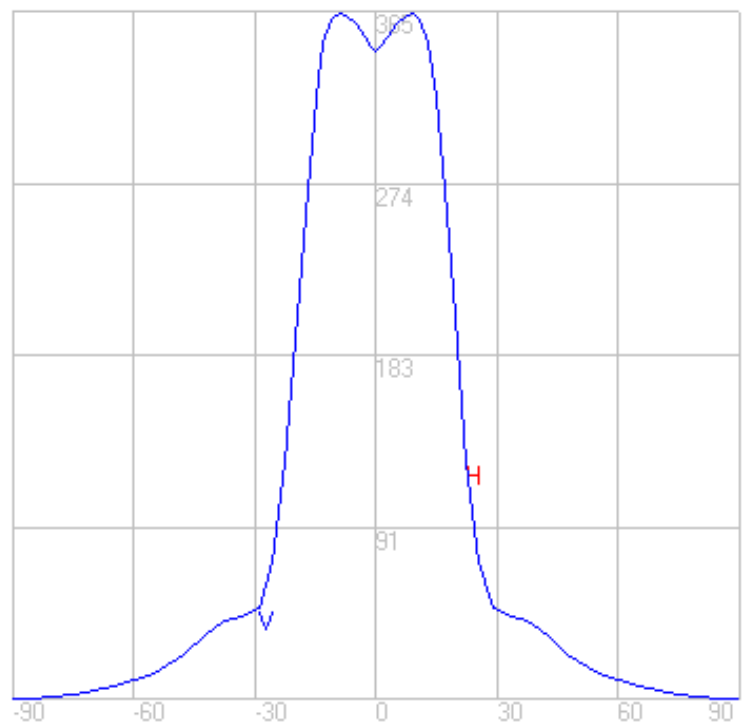
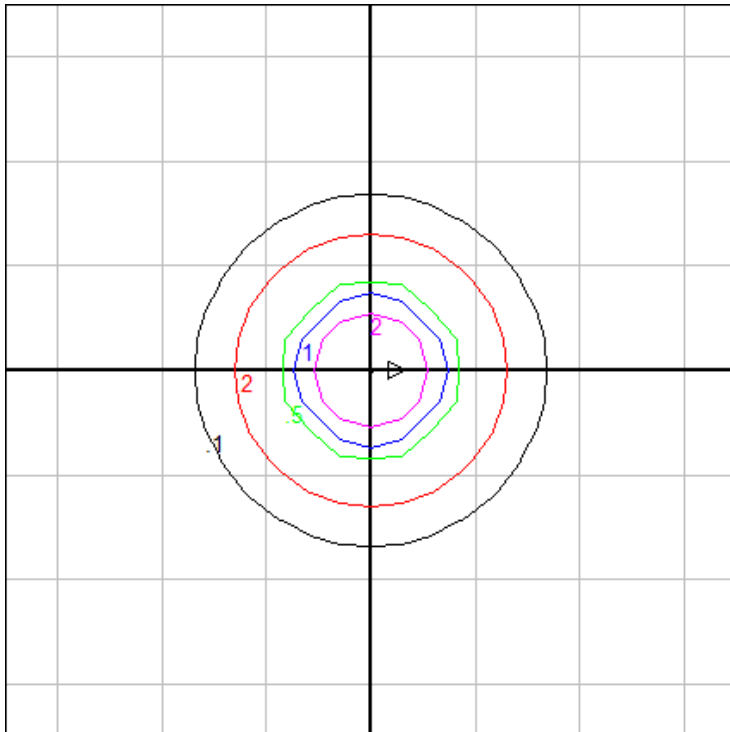


Characteristics

Lumens Per Lamp	N.A. (absolute)
Total Lamp Lumens	N.A. (absolute)
Luminaire Lumens	230
Total Luminaire Efficiency	N.A.
Luminaire Efficacy Rating (LER)	23
Total Luminaire Watts	10
Ballast Factor	1.00
CIE Type	Direct
Spacing Criterion (0-180)	0.72
Spacing Criterion (90-270)	0.72
Spacing Criterion (Diagonal)	0.62
Basic Luminous Shape	Circular
Luminous Length (0-180)	0.00 ft
Luminous Width (90-270)	0.16 ft (Diameter)
Luminous Height	0.00 ft

Zonal Lumen Summary

Zone	Lumens
0-10	34.44
10-20	83.31
20-30	41.42
30-40	26.86
40-50	22.08
50-60	12.48
60-70	6.47
70-80	2.79
80-90	0.63
90-100	0.00
100-110	0.00
110-120	0.00
120-130	0.00
130-140	0.00
140-150	0.00
150-160	0.00
160-170	0.00
170-180	0.00



Mounting Height: 10 ft.

Grid Spacing: 6 ft.

In the interest of product improvement, BEGA reserves the right to make technical changes without notice.

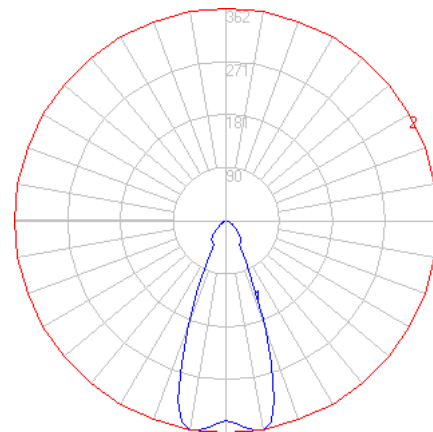
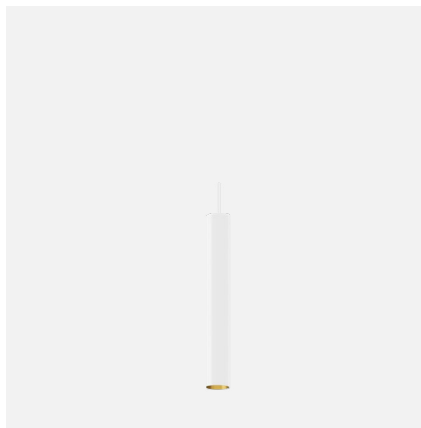
BEGA 1000 Bega Way, Carpinteria, CA 93013 (805)684-0533 Fax (805)566-9474 www.bega-us.com © Copyright BEGA-US 2020

07/16/20

BEGA

File: 50422.4K27_BEGA_IES.ies

TEST: BE_50422.4K3
TEST LAB: BEGA
DATE: 09/13/2017
LUMINAIRE: 50422.4K27
LAMP: 7.2W LED

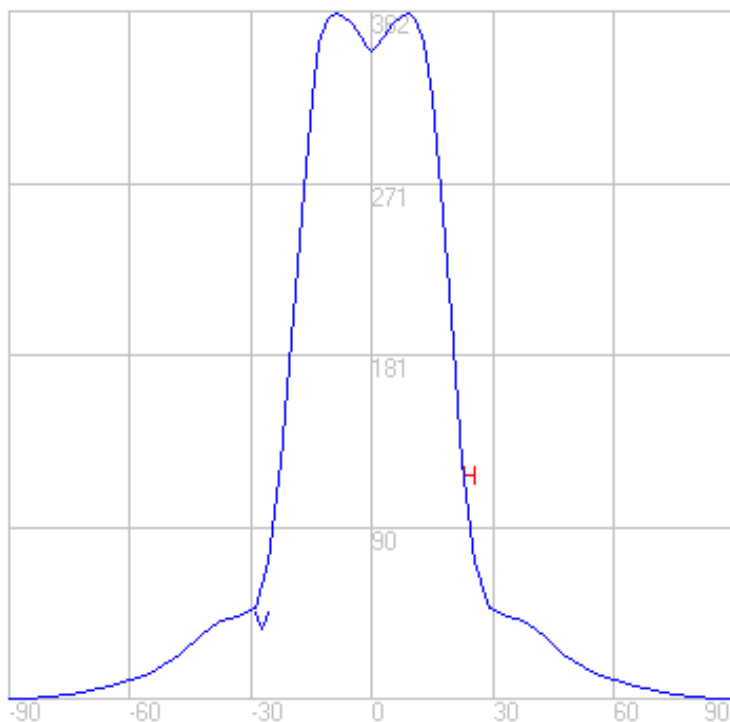
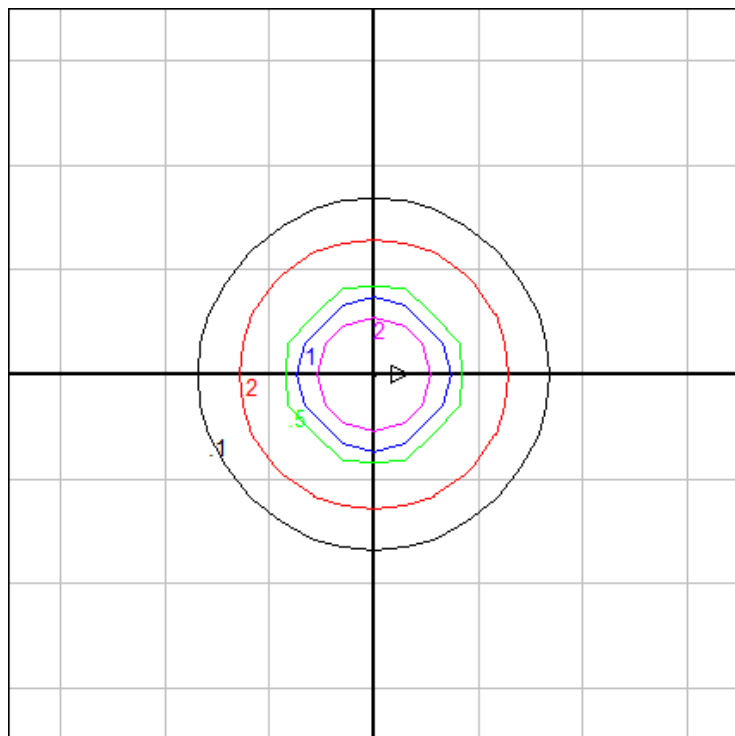


Characteristics

Lumens Per Lamp	N.A. (absolute)
Total Lamp Lumens	N.A. (absolute)
Luminaire Lumens	228
Total Luminaire Efficiency	N.A.
Luminaire Efficacy Rating (LER)	23
Total Luminaire Watts	10
Ballast Factor	1.00
CIE Type	Direct
Spacing Criterion (0-180)	0.72
Spacing Criterion (90-270)	0.72
Spacing Criterion (Diagonal)	0.62
Basic Luminous Shape	Circular
Luminous Length (0-180)	0.00 ft
Luminous Width (90-270)	0.16 ft (Diameter)
Luminous Height	0.00 ft

Zonal Lumen Summary

Zone	Lumens
0-10	34.09
10-20	82.48
20-30	41.01
30-40	26.59
40-50	21.86
50-60	12.36
60-70	6.40
70-80	2.76
80-90	0.62
90-100	0.00
100-110	0.00
110-120	0.00
120-130	0.00
130-140	0.00
140-150	0.00
150-160	0.00
160-170	0.00
170-180	0.00



Mounting Height: 10 ft.

Grid Spacing: 6 ft.

In the interest of product improvement, BEGA reserves the right to make technical changes without notice.

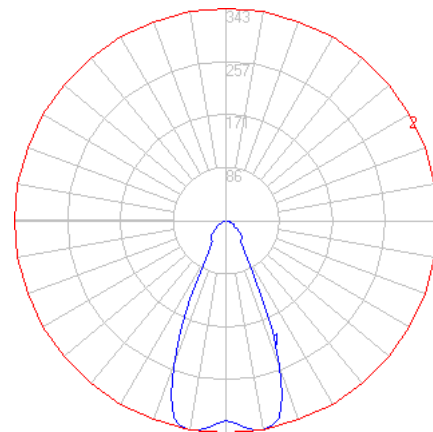
BEGA 1000 Bega Way, Carpinteria, CA 93013 (805)684-0533 Fax (805)566-9474 www.bega-us.com © Copyright BEGA-US 2020

07/16/20

BEGA

File: 50422.6K4_BEGA_IES.ies

TEST: BE_50422.6K3
TEST LAB: BEGA
DATE: 09/13/2017
LUMINAIRE: 50422.6K4
LAMP: 7.2W LED

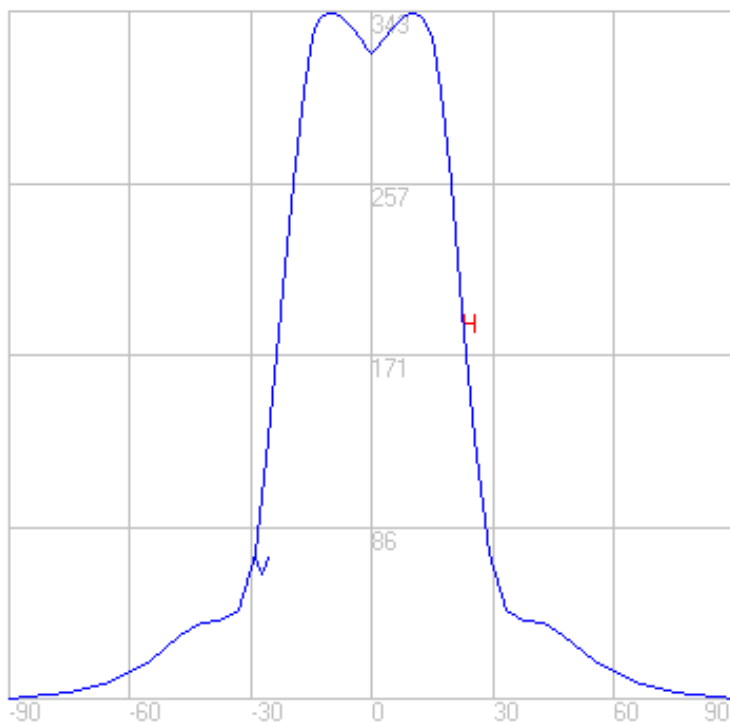
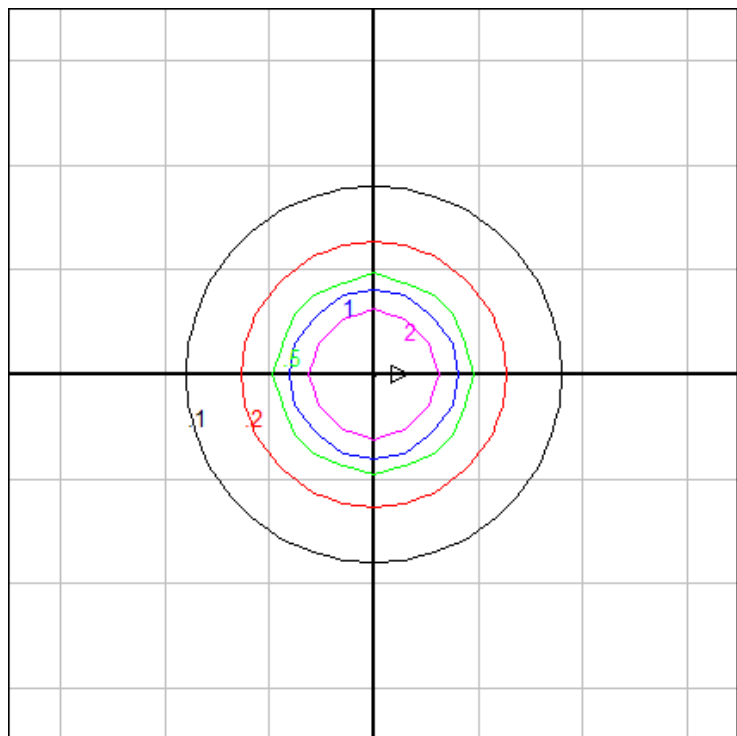


Characteristics

Lumens Per Lamp	N.A. (absolute)
Total Lamp Lumens	N.A. (absolute)
Luminaire Lumens	269
Total Luminaire Efficiency	N.A.
Luminaire Efficacy Rating (LER)	27
Total Luminaire Watts	10
Ballast Factor	1.00
CIE Type	Direct
Spacing Criterion (0-180)	0.82
Spacing Criterion (90-270)	0.82
Spacing Criterion (Diagonal)	0.72
Basic Luminous Shape	Circular
Luminous Length (0-180)	0.00 ft
Luminous Width (90-270)	0.16 ft (Diameter)
Luminous Height	0.00 ft

Zonal Lumen Summary

Zone	Lumens
0-10	32.23
10-20	88.26
20-30	64.52
30-40	27.10
40-50	26.43
50-60	17.19
60-70	8.80
70-80	3.72
80-90	0.84
90-100	0.00
100-110	0.00
110-120	0.00
120-130	0.00
130-140	0.00
140-150	0.00
150-160	0.00
160-170	0.00
170-180	0.00



Mounting Height: 10 ft.

Grid Spacing: 6 ft.

In the interest of product improvement, BEGA reserves the right to make technical changes without notice.

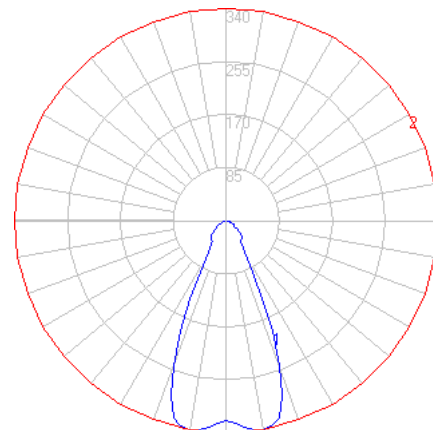
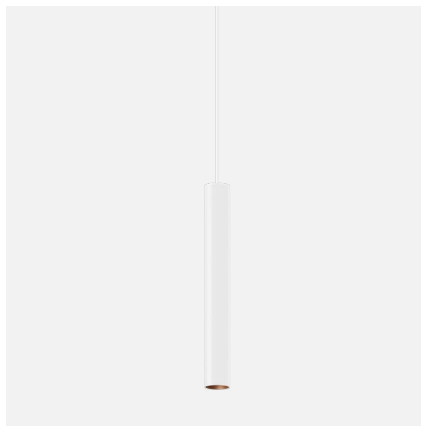
BEGA 1000 Bega Way, Carpinteria, CA 93013 (805)684-0533 Fax (805)566-9474 www.bega-us.com © Copyright BEGA-US 2020

07/16/20

BEGA

File: 50422.6K35_BEGA_IES.ies

TEST: BE_50422.6K3
 TEST LAB: BEGA
 DATE: 09/13/2017
 LUMINAIRE: 50422.6K35
 LAMP: 7.2W LED

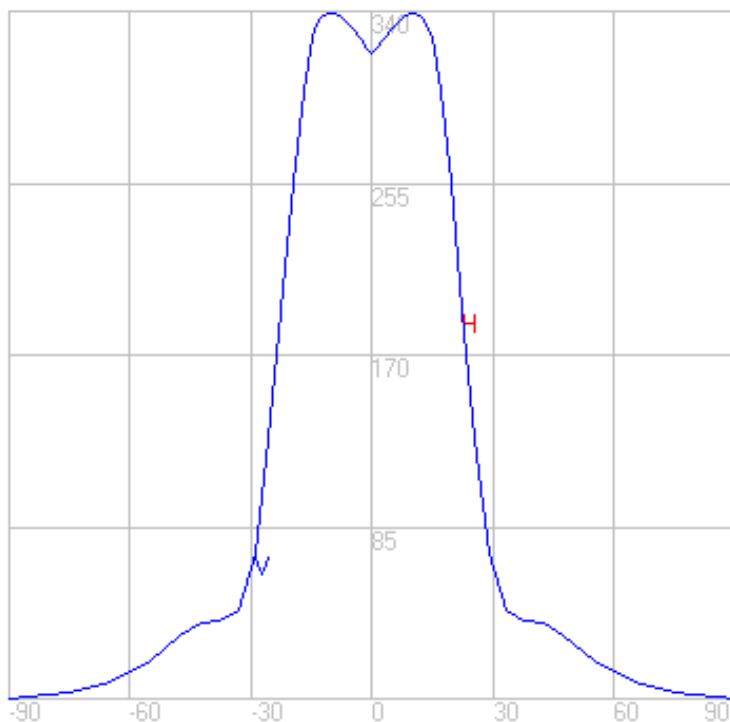
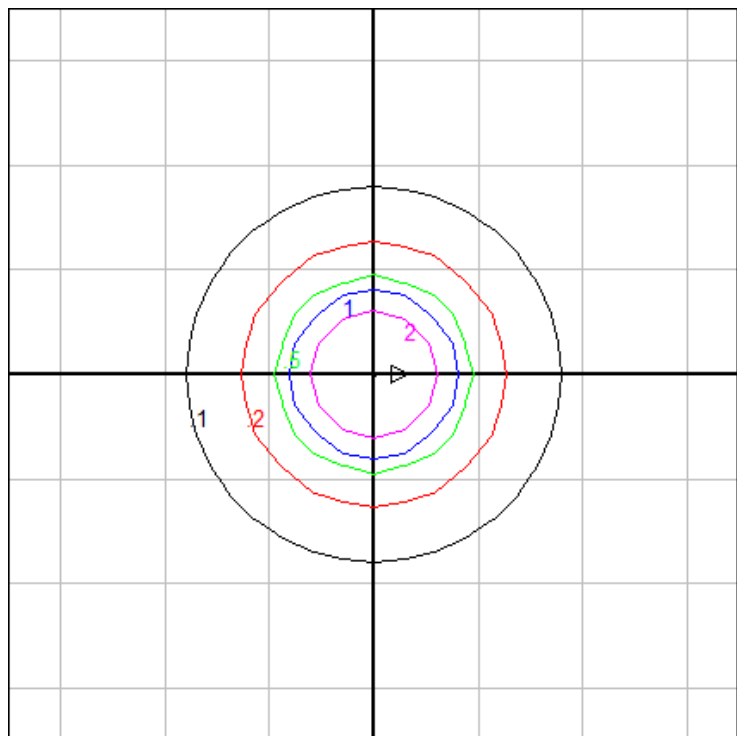


Characteristics

Lumens Per Lamp	N.A. (absolute)
Total Lamp Lumens	N.A. (absolute)
Luminaire Lumens	267
Total Luminaire Efficiency	N.A.
Luminaire Efficacy Rating (LER)	27
Total Luminaire Watts	10
Ballast Factor	1.00
CIE Type	Direct
Spacing Criterion (0-180)	0.82
Spacing Criterion (90-270)	0.82
Spacing Criterion (Diagonal)	0.72
Basic Luminous Shape	Circular
Luminous Length (0-180)	0.00 ft
Luminous Width (90-270)	0.16 ft (Diameter)
Luminous Height	0.00 ft

Zonal Lumen Summary

Zone	Lumens
0-10	31.92
10-20	87.42
20-30	63.91
30-40	26.85
40-50	26.18
50-60	17.03
60-70	8.72
70-80	3.68
80-90	0.83
90-100	0.00
100-110	0.00
110-120	0.00
120-130	0.00
130-140	0.00
140-150	0.00
150-160	0.00
160-170	0.00
170-180	0.00



Mounting Height: 10 ft.

Grid Spacing: 6 ft.

In the interest of product improvement, BEGA reserves the right to make technical changes without notice.

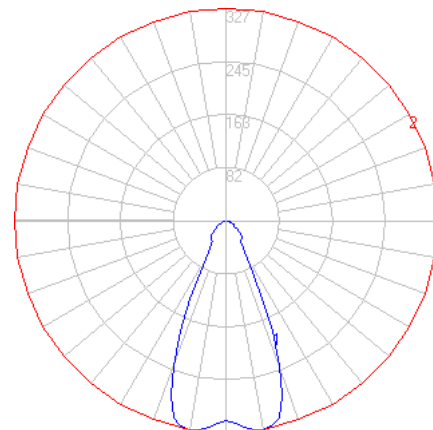
BEGA 1000 Bega Way, Carpinteria, CA 93013 (805)684-0533 Fax (805)566-9474 www.bega-us.com © Copyright BEGA-US 2020

07/16/20

BEGA

File: 50422.6K3_BEGA_IES.ies

TEST: BE_50422.6K3
TEST LAB: BEGA
DATE: 09/13/2017
LUMINAIRE: 50422.6K3
LAMP: 7.2W LED

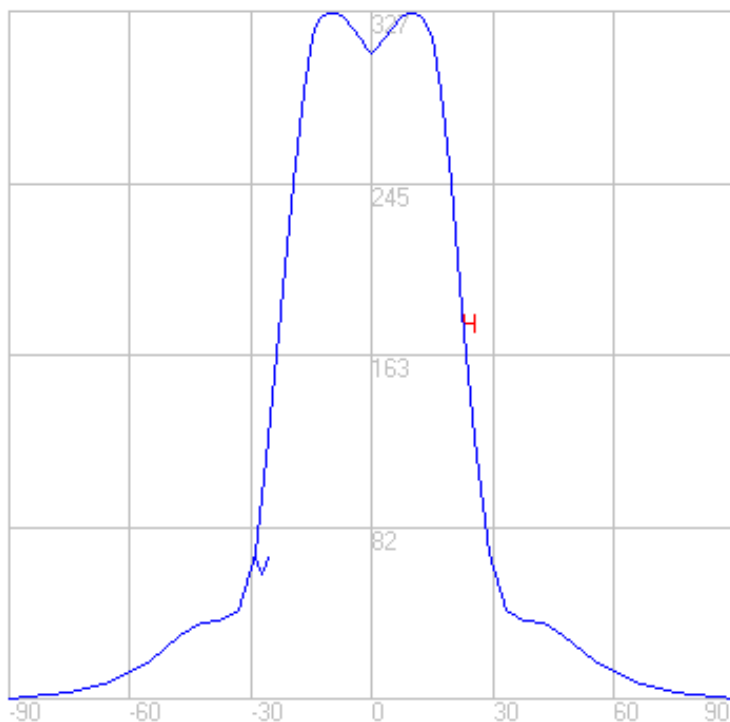
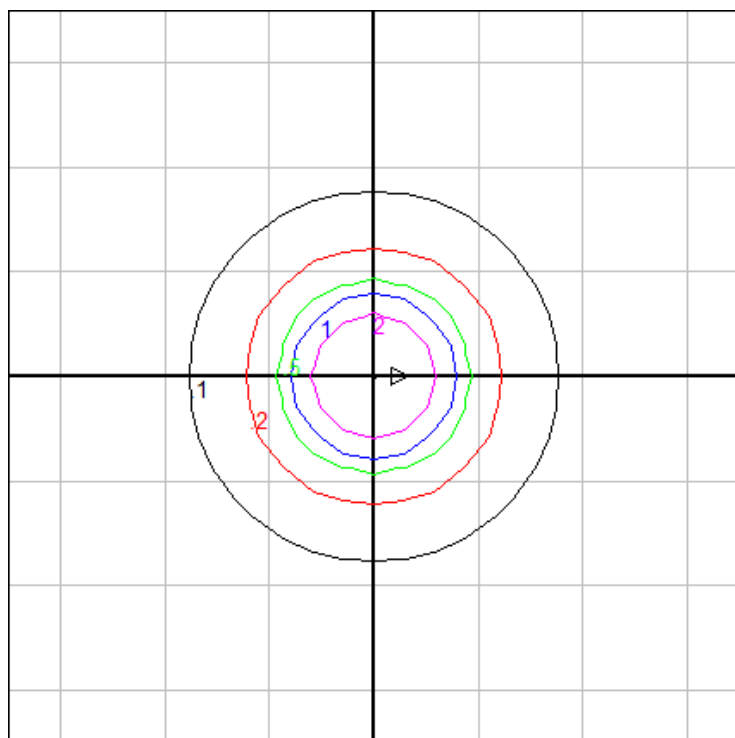


Characteristics

Lumens Per Lamp	N.A. (absolute)
Total Lamp Lumens	N.A. (absolute)
Luminaire Lumens	256
Total Luminaire Efficiency	N.A.
Luminaire Efficacy Rating (LER)	26
Total Luminaire Watts	10
Ballast Factor	1.00
CIE Type	Direct
Spacing Criterion (0-180)	0.82
Spacing Criterion (90-270)	0.82
Spacing Criterion (Diagonal)	0.72
Basic Luminous Shape	Circular
Luminous Length (0-180)	0.00 ft
Luminous Width (90-270)	0.16 ft (Diameter)
Luminous Height	0.00 ft

Zonal Lumen Summary

Zone	Lumens
0-10	30.69
10-20	84.06
20-30	61.45
30-40	25.81
40-50	25.17
50-60	16.37
60-70	8.38
70-80	3.54
80-90	0.80
90-100	0.00
100-110	0.00
110-120	0.00
120-130	0.00
130-140	0.00
140-150	0.00
150-160	0.00
160-170	0.00
170-180	0.00



Mounting Height: 10 ft.

Grid Spacing: 6 ft.

In the interest of product improvement, BEGA reserves the right to make technical changes without notice.

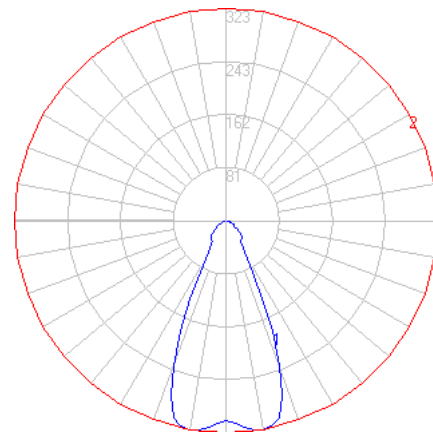
BEGA 1000 Bega Way, Carpinteria, CA 93013 (805)684-0533 Fax (805)566-9474 www.bega-us.com © Copyright BEGA-US 2020

07/16/20

BEGA

File: 50422.6K27_BEGA_IES.ies

TEST: BE_50422.6K3
TEST LAB: BEGA
DATE: 09/13/2017
LUMINAIRE: 50422.6K27
LAMP: 7.2W LED

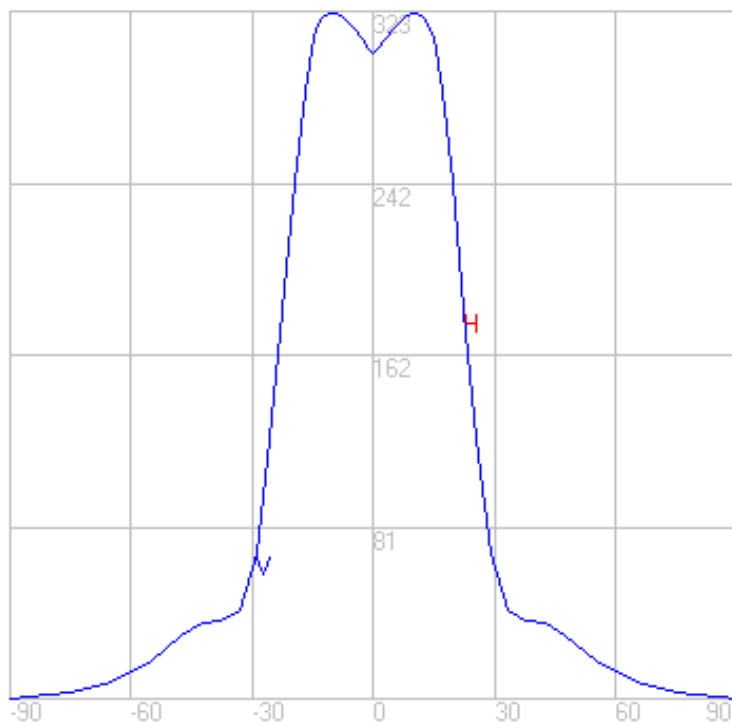
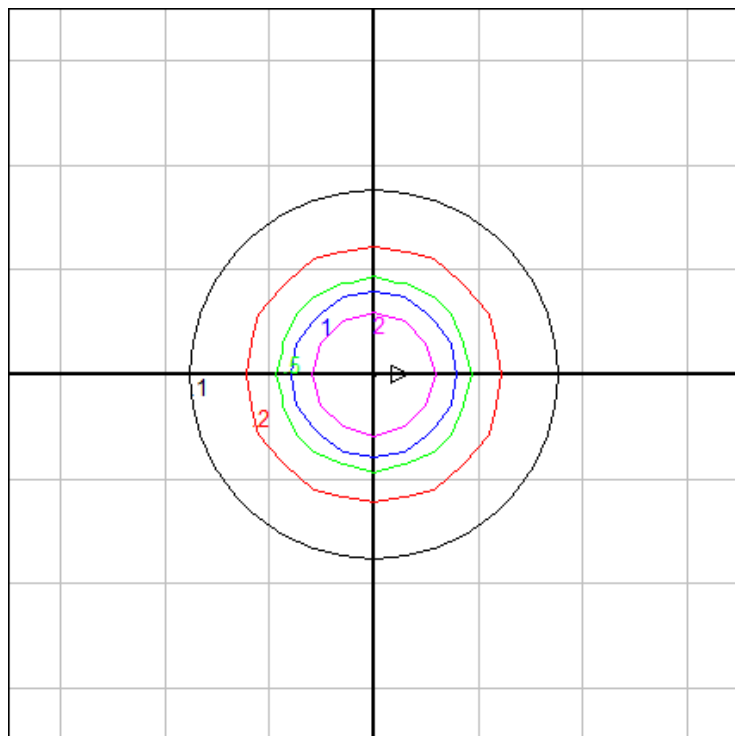


Characteristics

Lumens Per Lamp	N.A. (absolute)
Total Lamp Lumens	N.A. (absolute)
Luminaire Lumens	254
Total Luminaire Efficiency	N.A.
Luminaire Efficacy Rating (LER)	25
Total Luminaire Watts	10
Ballast Factor	1.00
CIE Type	Direct
Spacing Criterion (0-180)	0.82
Spacing Criterion (90-270)	0.82
Spacing Criterion (Diagonal)	0.72
Basic Luminous Shape	Circular
Luminous Length (0-180)	0.00 ft
Luminous Width (90-270)	0.16 ft (Diameter)
Luminous Height	0.00 ft

Zonal Lumen Summary

Zone	Lumens
0-10	30.39
10-20	83.22
20-30	60.83
30-40	25.55
40-50	24.92
50-60	16.21
60-70	8.30
70-80	3.51
80-90	0.79
90-100	0.00
100-110	0.00
110-120	0.00
120-130	0.00
130-140	0.00
140-150	0.00
150-160	0.00
160-170	0.00
170-180	0.00



Mounting Height: 10 ft.

Grid Spacing: 6 ft.

In the interest of product improvement, BEGA reserves the right to make technical changes without notice.

BEGA 1000 Bega Way, Carpinteria, CA 93013 (805)684-0533 Fax (805)566-9474 www.bega-us.com © Copyright BEGA-US 2020

07/16/20