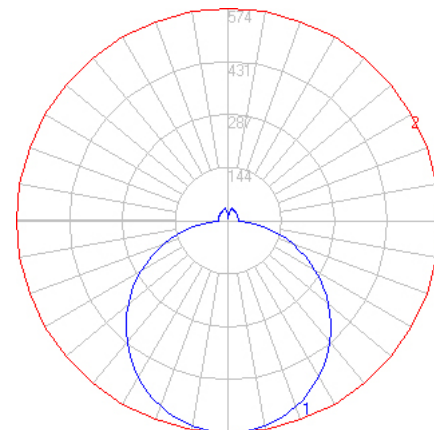
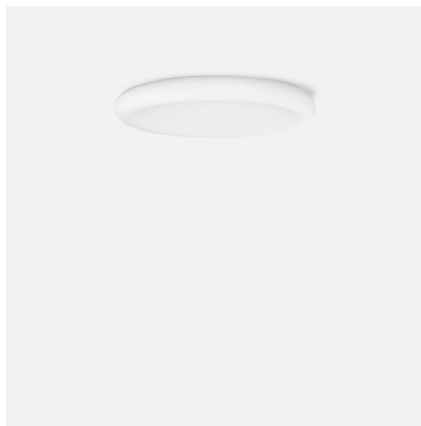


BEGA

File: 50171K4_BEGA_IES.ies

TEST: BE_50171K4
TEST LAB: BEGA
DATE: 04/05/2017
LUMINAIRE: 50 171K4
LAMP: 17.8W LED

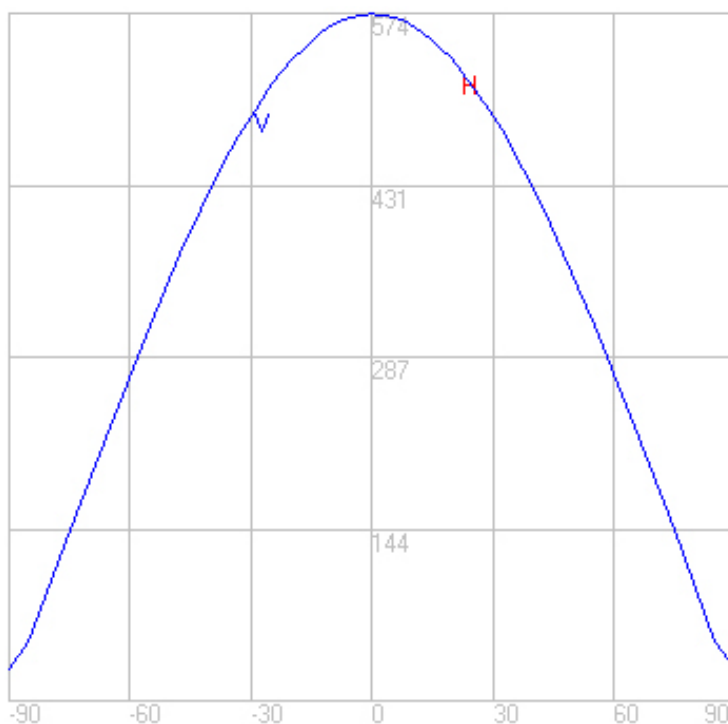
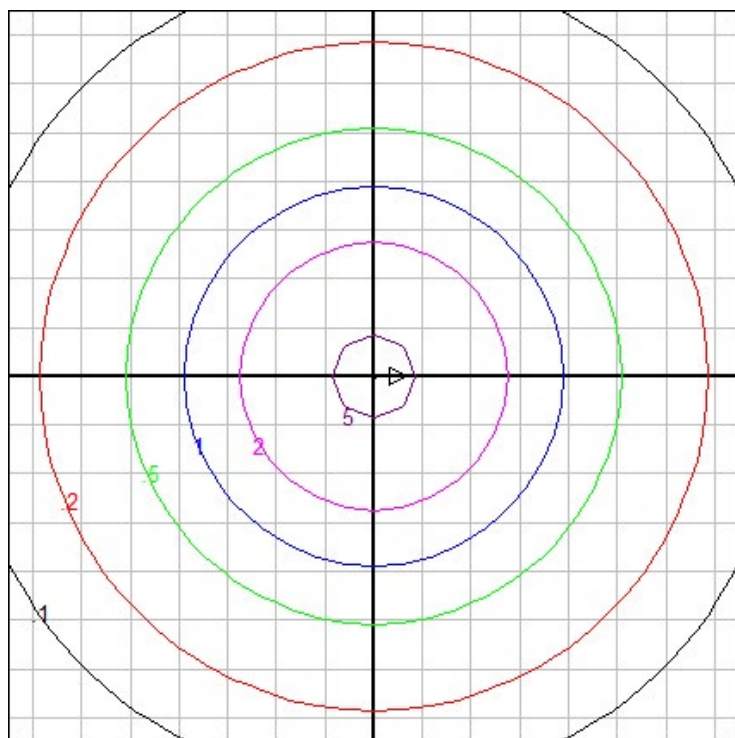


Characteristics

Lumens Per Lamp	N.A. (absolute)
Total Lamp Lumens	N.A. (absolute)
Luminaire Lumens	1934
Total Luminaire Efficiency	N.A.
Luminaire Efficacy Rating (LER)	84
Total Luminaire Watts	23
Ballast Factor	1.00
CIE Type	Direct
Spacing Criterion (0-180)	1.28
Spacing Criterion (90-270)	1.28
Spacing Criterion (Diagonal)	1.40
Basic Luminous Shape	Circular w/ Sides
Luminous Length (0-180)	0.00 ft
Luminous Width (90-270)	0.95 ft (Diameter)
Luminous Height	0.11 ft

Zonal Lumen Summary

Zone	Lumens
0-10	54.31
10-20	155.77
20-30	237.00
30-40	287.80
40-50	302.51
50-60	280.77
60-70	227.48
70-80	150.11
80-90	59.18
90-100	28.95
100-110	28.47
110-120	27.47
120-130	25.56
130-140	22.64
140-150	19.05
150-160	15.05
160-170	9.39
170-180	2.03



Mounting Height: 10 ft.

Grid Spacing: 3 ft.

In the interest of product improvement, BEGA reserves the right to make technical changes without notice.

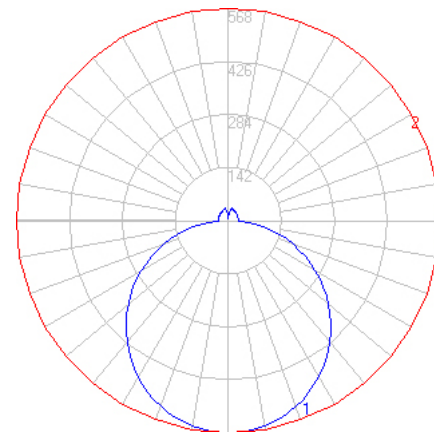
BEGA 1000 Bega Way, Carpinteria, CA 93013 (805)684-0533 Fax (805)566-9474 www.bega-us.com © Copyright BEGA-US 2020

05/13/20

BEGA

File: 50171K35_BEGA_IES.ies

TEST: BE_50171K4
TEST LAB: BEGA
DATE: 04/05/2017
LUMINAIRE: 50 171K35
LAMP: 17.8W LED

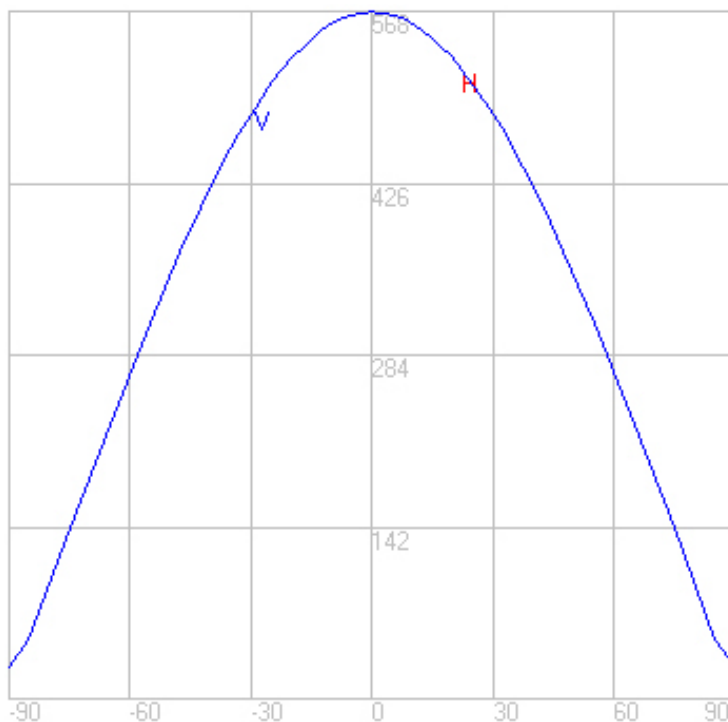
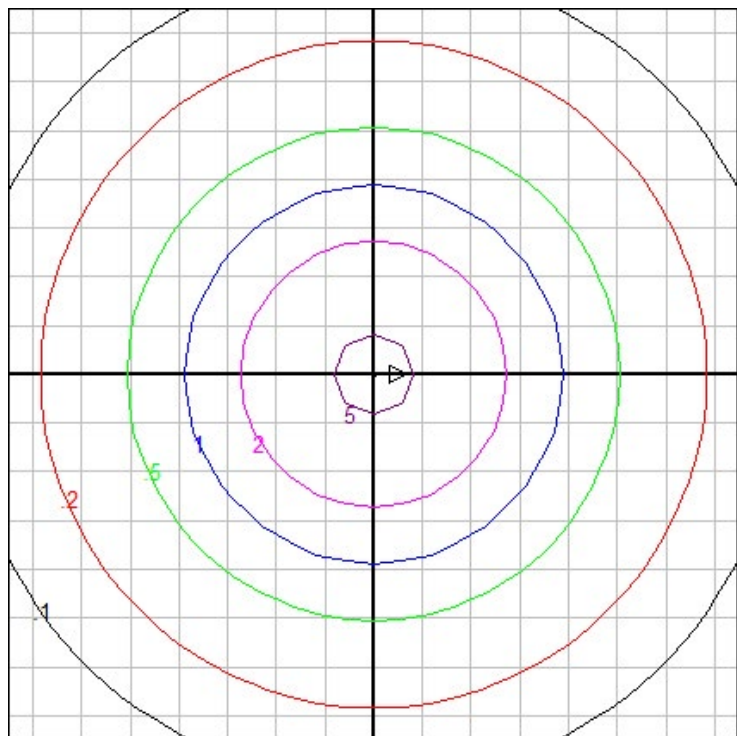


Characteristics

Lumens Per Lamp	N.A. (absolute)
Total Lamp Lumens	N.A. (absolute)
Luminaire Lumens	1914
Total Luminaire Efficiency	N.A.
Luminaire Efficacy Rating (LER)	91
Total Luminaire Watts	23
Ballast Factor	1.00
CIE Type	Direct
Spacing Criterion (0-180)	1.28
Spacing Criterion (90-270)	1.28
Spacing Criterion (Diagonal)	1.40
Basic Luminous Shape	Circular w/ Sides
Luminous Length (0-180)	0.00 ft
Luminous Width (90-270)	0.95 ft (Diameter)
Luminous Height	0.11 ft

Zonal Lumen Summary

Zone	Lumens
0-10	53.77
10-20	154.21
20-30	234.63
30-40	284.92
40-50	299.48
50-60	277.96
60-70	225.20
70-80	148.61
80-90	58.59
90-100	28.66
100-110	28.18
110-120	27.19
120-130	25.31
130-140	22.42
140-150	18.86
150-160	14.90
160-170	9.30
170-180	2.01



Mounting Height: 10 ft.

Grid Spacing: 3 ft.

In the interest of product improvement, BEGA reserves the right to make technical changes without notice.

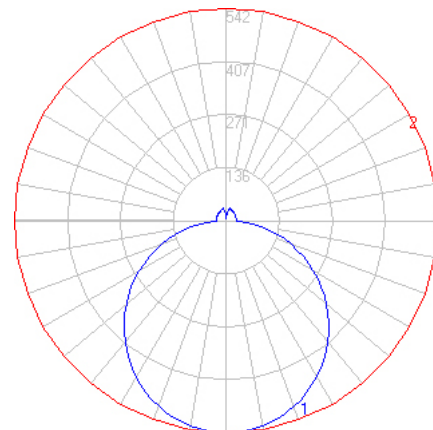
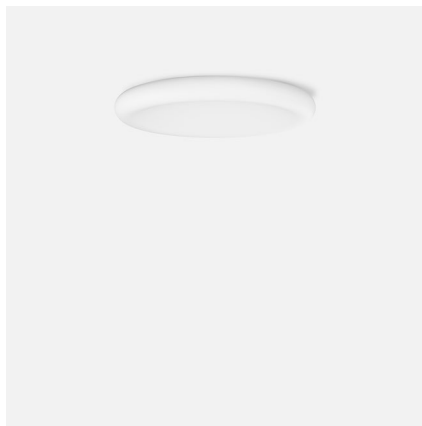
BEGA 1000 Bega Way, Carpinteria, CA 93013 (805)684-0533 Fax (805)566-9474 www.bega-us.com © Copyright BEGA-US 2020

05/13/20

BEGA

File: 50171K3_BEGA_IES.ies

TEST: BE_50171K4
 TEST LAB: BEGA
 DATE: 04/05/2017
 LUMINAIRE: 50 171K3
 LAMP: 17.8W LED

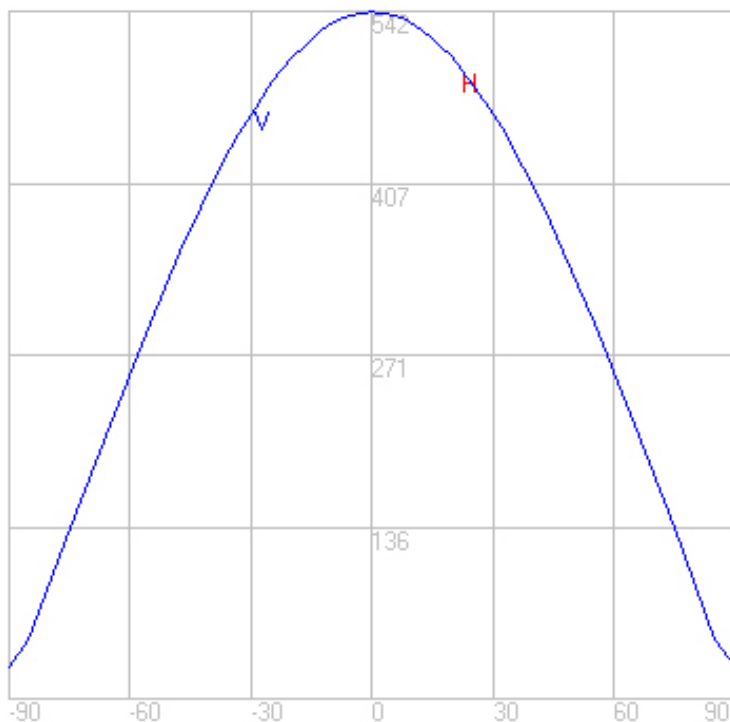
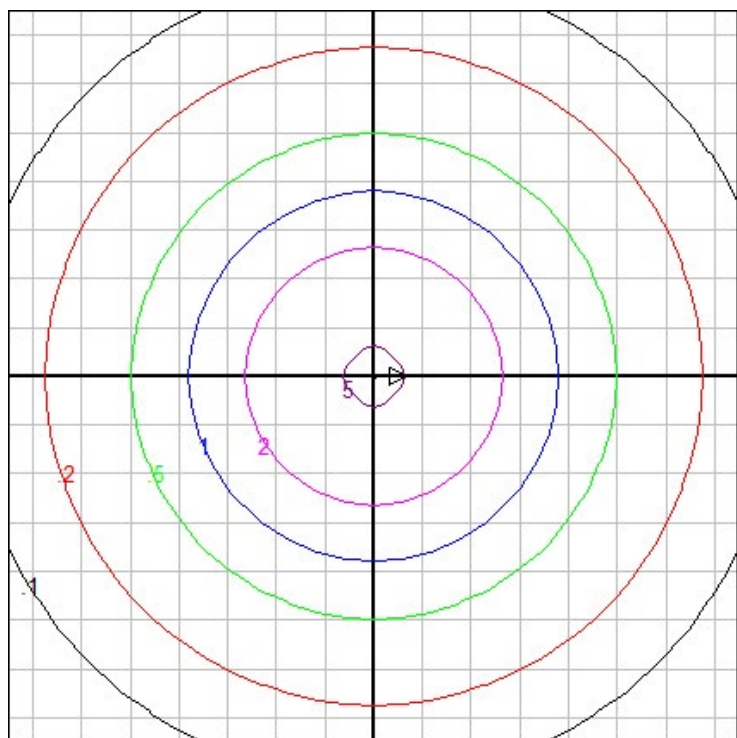


Characteristics

Lumens Per Lamp	N.A. (absolute)
Total Lamp Lumens	N.A. (absolute)
Luminaire Lumens	1827
Total Luminaire Efficiency	N.A.
Luminaire Efficacy Rating (LER)	87
Total Luminaire Watts	23
Ballast Factor	1.00
CIE Type	Direct
Spacing Criterion (0-180)	1.28
Spacing Criterion (90-270)	1.28
Spacing Criterion (Diagonal)	1.40
Basic Luminous Shape	Circular w/ Sides
Luminous Length (0-180)	0.00 ft
Luminous Width (90-270)	0.95 ft (Diameter)
Luminous Height	0.11 ft

Zonal Lumen Summary

Zone	Lumens
0-10	51.32
10-20	147.20
20-30	223.96
30-40	271.97
40-50	285.87
50-60	265.33
60-70	214.96
70-80	141.85
80-90	55.92
90-100	27.36
100-110	26.90
110-120	25.95
120-130	24.16
130-140	21.40
140-150	18.00
150-160	14.22
160-170	8.87
170-180	1.92



Mounting Height: 10 ft.

Grid Spacing: 3 ft.

In the interest of product improvement, BEGA reserves the right to make technical changes without notice.

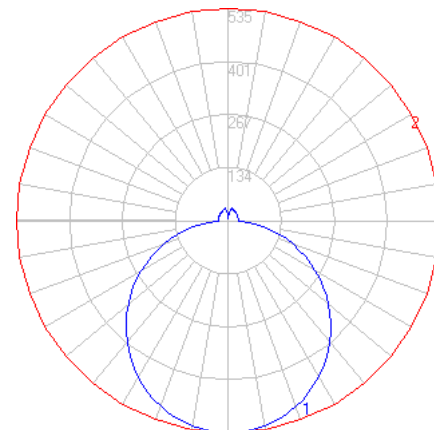
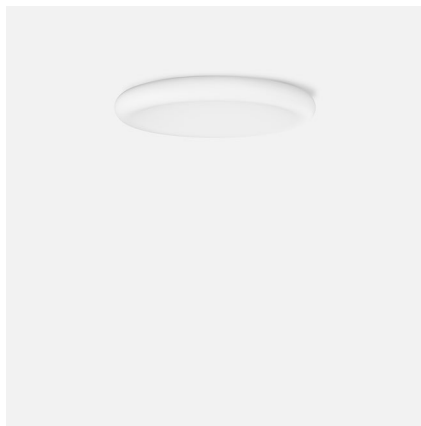
BEGA 1000 Bega Way, Carpinteria, CA 93013 (805)684-0533 Fax (805)566-9474 www.bega-us.com © Copyright BEGA-US 2020

05/13/20

BEGA

File: 50171K27_BEGA_IES.ies

TEST: BE_50171K4
TEST LAB: BEGA
DATE: 04/05/2017
LUMINAIRE: 50 171K27
LAMP: 17.8W LED

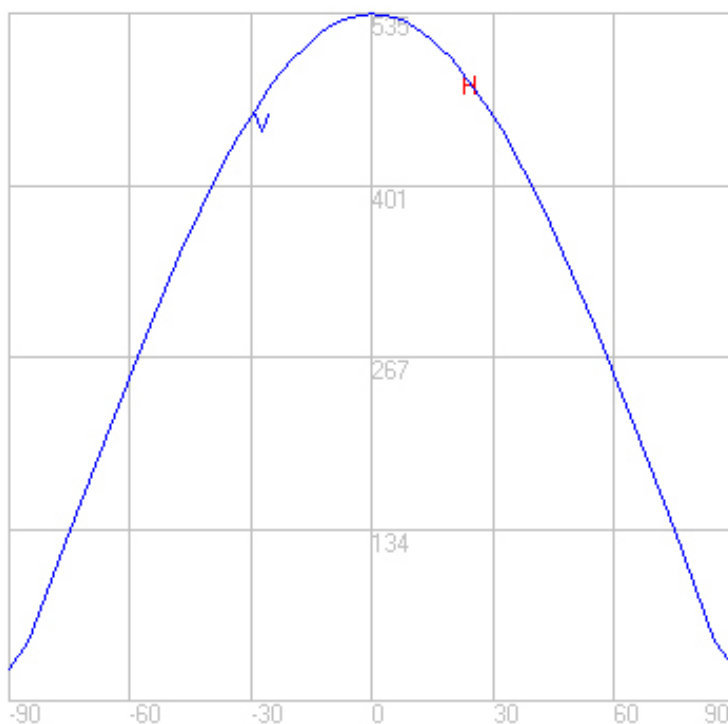
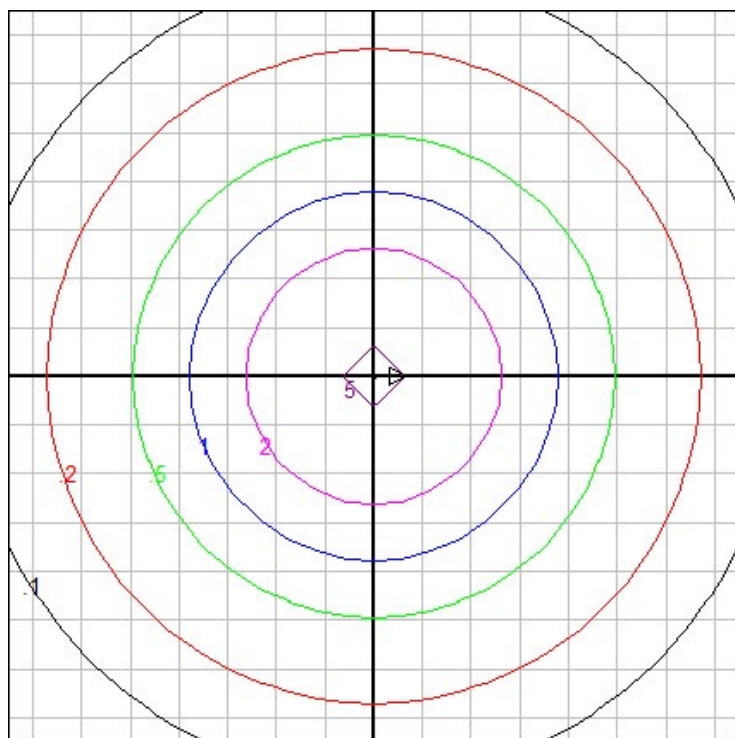


Characteristics

Lumens Per Lamp	N.A. (absolute)
Total Lamp Lumens	N.A. (absolute)
Luminaire Lumens	1802
Total Luminaire Efficiency	N.A.
Luminaire Efficacy Rating (LER)	78
Total Luminaire Watts	23
Ballast Factor	1.00
CIE Type	Direct
Spacing Criterion (0-180)	1.28
Spacing Criterion (90-270)	1.28
Spacing Criterion (Diagonal)	1.40
Basic Luminous Shape	Circular w/ Sides
Luminous Length (0-180)	0.00 ft
Luminous Width (90-270)	0.95 ft (Diameter)
Luminous Height	0.11 ft

Zonal Lumen Summary

Zone	Lumens
0-10	50.62
10-20	145.17
20-30	220.88
30-40	268.23
40-50	281.94
50-60	261.68
60-70	212.01
70-80	139.90
80-90	55.15
90-100	26.99
100-110	26.53
110-120	25.60
120-130	23.82
130-140	21.10
140-150	17.75
150-160	14.02
160-170	8.75
170-180	1.89



Mounting Height: 10 ft.

Grid Spacing: 3 ft.

In the interest of product improvement, BEGA reserves the right to make technical changes without notice.

BEGA 1000 Bega Way, Carpinteria, CA 93013 (805)684-0533 Fax (805)566-9474 www.bega-us.com © Copyright BEGA-US 2020

05/13/20