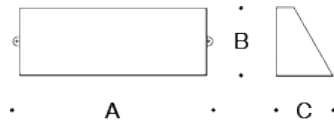


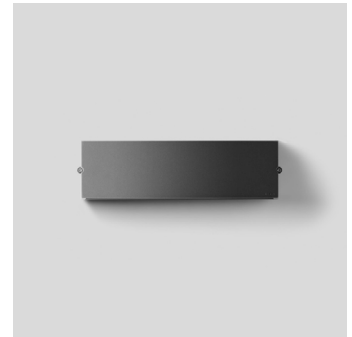
Tools Required:

- 4mm hex head screwdriver
- Phillips head screwdriver



Dimensions

- A:** 16-3/8"
- B:** 4-3/4"
- C:** 3-7/8"



Protection Class: IP 65

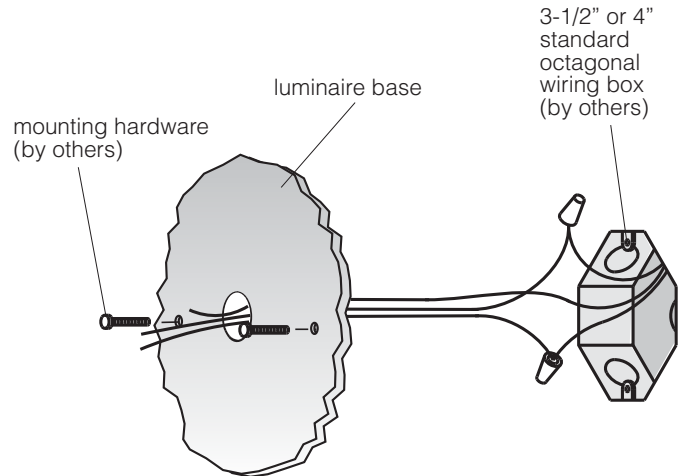
Weight: 5.3 lbs.

Notice to Installer for 24 373:

- For wall applications only.
- Mounts directly to finished wall surface over standard recessed 4" octagonal wiring box (by others).
- In conformance with UL Standard 1598, a silicone based sealant must be used between luminaire and supporting wall.
- LEDs are high-quality electronic components! Please avoid touching the light output opening of the LED directly during installation.
- For downwards orientation only.

24 373 - installation:

- Loosen front (2) 4mm hex screws to separate luminaire housing from luminaire base.
- Feed luminaire wires through luminaire base.
- Make supply wiring and luminaire wiring connections in the octagonal wiring box:
 - MAIN VOLTAGE SUPPLY WIRE TO BLACK LUMINAIRE WIRE
 - NEUTRAL (COMMON) SUPPLY WIRE TO WHITE LUMINAIRE WIRE
 - GREEN GROUND WIRE TO GREEN LUMINAIRE WIRE
- 0-10V DIMMING (if applicable):
 - DIMMING CONTROL WIRE (+) TO POSITIVE LUMINAIRE DIM CONTROL WIRE
 - DIMMING CONTROL WIRE (-) TO NEGATIVE LUMINAIRE DIM CONTROL WIRE
- Place a small bead of silicone around the back side of the mounting plate that will come in contact with the finished wall (exterior applications only).
- Mount luminaire directly to the finished wall surface over recessed wiring box using hardware by others (minimum size 8-32 screws).
- Replace front luminaire housing and tighten (2) 4mm hex screws, making sure that the gasket is seated properly. Do not overtighten.



Relamping/Maintenance

Clean regularly with solvent-free cleansers. Do not use high pressure cleaners.

Accessories

Please refer to the appropriate accessory installation sheet for further instruction when applicable.

Replacement Parts

Description	Part No
Faceplate	FP24373
LED Driver	76120
LED Module (3000K)	LED-0520/830
LED Module (4000K)	LED-0520/840

Lamp: 18.4W LED

In the interest of product improvement, BEGA reserves the right to make technical changes without notice.

Product Safety Warnings:

THIS PRODUCT MUST BE INSTALLED IN ACCORDANCE WITH THE APPLICABLE INSTALLATION CODE BY A PERSON FAMILIAR WITH THE CONSTRUCTION AND OPERATION OF THE PRODUCT AND THE HAZARDS INVOLVED. SUITABLE FOR WET LOCATIONS.

MIN 90°C SUPPLY CONDUCTORS.

CE PRODUIT DOIT ÊTRE INSTALLÉ SELON LE CODE D'INSTALLATION PERTINENT, PAR UNE PERSONNE QUI CONNAÎT BIEN LE PRODUIT ET SON FONCTIONNEMENT AINSI QUE LES RISQUES INHÉRENTS. CONVIENT AUX EMPLACEMENTS MOUILLÉS.

LES FILS D'ALIMENTATION 90°C MIN.
