

Application

Wall mounted luminaire with asymmetrical light distribution. It is ideal for illuminating horizontal surfaces from vertical mounting surfaces.

Materials

Luminaire housing and faceplate constructed of die-cast marine grade, copper free ($\leq 0.3\%$ copper content) A360.0 aluminum alloy
Clear safety glass
Reflector made of pure anodized aluminum
Silicone applied robotically to casting, plasma treated for increased adhesion
High temperature silicone gasket
Mechanically captive stainless steel fasteners

NRTL listed to North American Standards, suitable for wet locations
Protection class IP 65
Weight: 11.0lbs

Electrical

Operating voltage	120-277VAC
Minimum start temperature	-30° C
LED module wattage	21.3 W
System wattage	26.0 W
Controllability	0-10V dimmable
Color rendering index	Ra > 80
Luminaire lumens	3,351 lumens (4000K)
LED service life (L70)	60,000 hours

LED color temperature

4000K - Product number + **K4**
3500K - Product number + **K35**
3000K - Product number + **K3**
2700K - Product number + **K27**

BEGA can supply you with suitable LED replacement modules for up to 20 years after the purchase of LED luminaires - see website for details

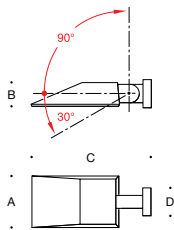
Finish

All BEGA standard finishes are matte, textured powder coat with minimum 3 mil thickness. BEGA Unidure® finish, a fluoropolymer technology, provides superior fade protection in Black, Bronze, and Silver. BEGA standard White, as well as optionally available RAL and custom colors, are a polyester powder.

Available colors	Black (BLK)	White (WHT)	RAL:
	Bronze (BRZ)	Silver (SLV)	CUS:

Type:
BEGA Product:
Project:
Modified:

Available options
FSC Fusing



Wall luminaire - surface washer					
	LED	A	B	C	D
24 351	21.3 W	8 7/8	4	19 1/8	5 1/4

