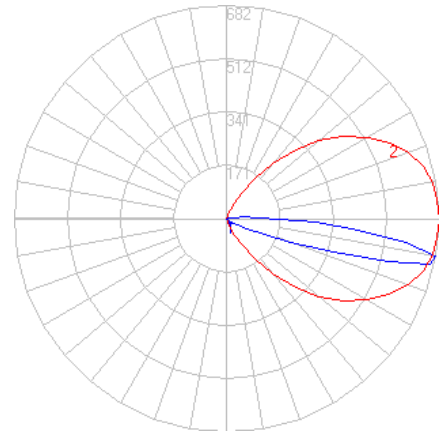
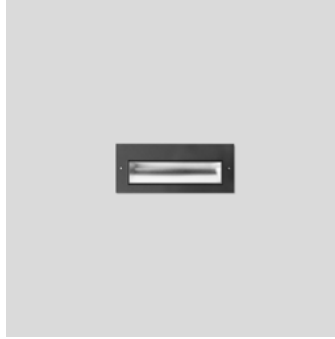


BEGA

Photometric Filename: 24063K4.ies

TEST: BE_24063K4
 TEST LAB: BEGA
 DATE: 10/10/2017
 LUMINAIRE: 24 063K4
 LAMP: 5.1W LED



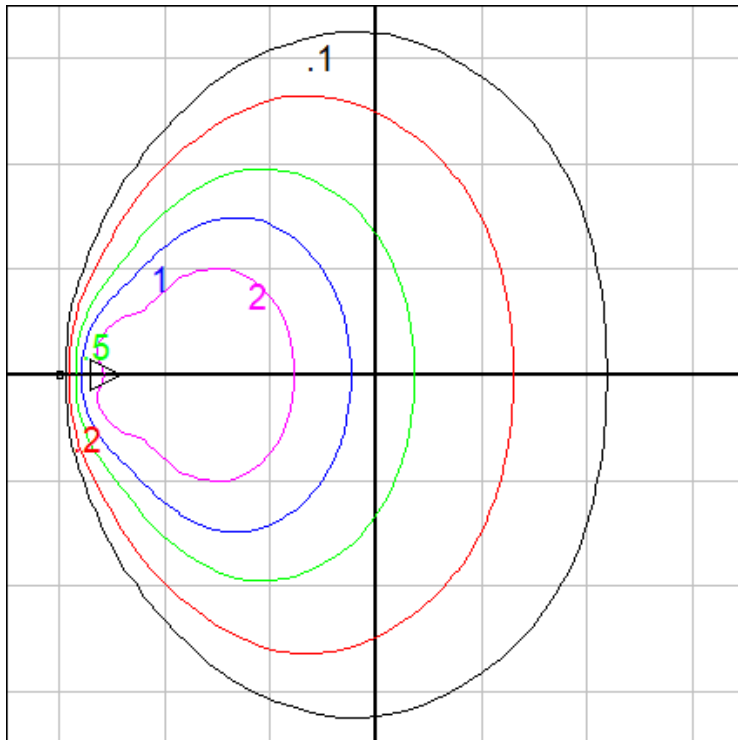
Characteristics

IES Classification	Type IV
Longitudinal Classification	Very Short
Lumens Per Lamp	N.A. (absolute)
Total Lamp Lumens	N.A. (absolute)
Luminaire Lumens	305
Downward Total Efficiency	N.A.
Total Luminaire Efficiency	N.A.
Luminaire Efficacy Rating (LER)	45
Total Luminaire Watts	6.8
Ballast Factor	1.00
Upward Waste Light Ratio	0.09
Max. Cd.	682 (0H, 80V)
Max. Cd. (<90 Vert.)	682 (0H, 80V)
Max. Cd. (At 90 Deg. Vert.)	178.7 (58.6%Lum)
Max. Cd. (80 to <90 Deg. Vert.)	682 (223.6%Lum)
Cutoff Classification (deprecated)	N.A. (absolute)

Lum. Classification System (LCS)

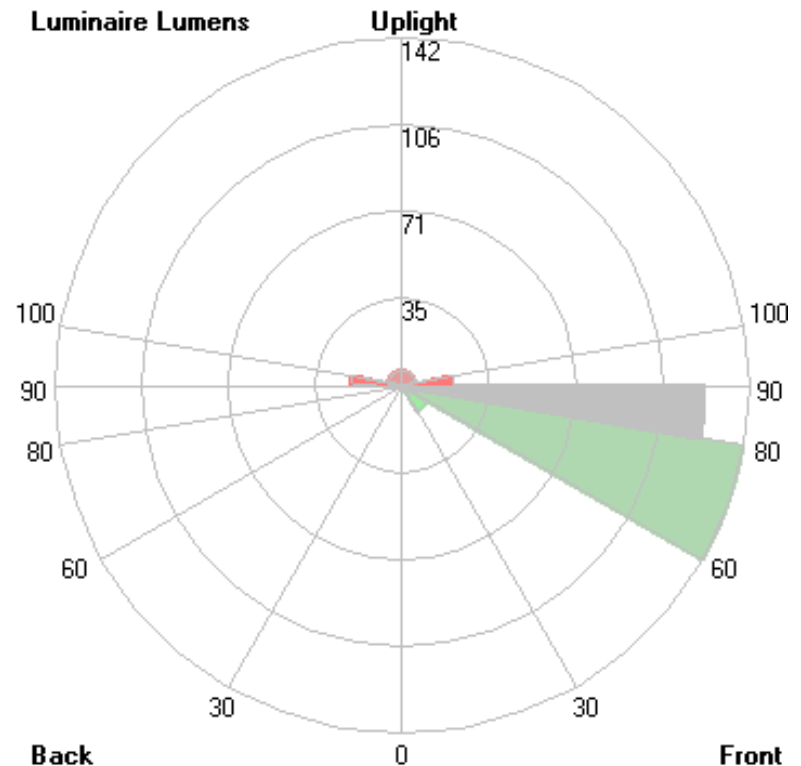
LCS Zone	Lumens	%Lamp	%Lum
FL (0-30)	0.3	N.A.	0.1
FM (30-60)	12.2	N.A.	4.0
FH (60-80)	141.8	N.A.	46.5
FVH(80-90)	123.8	N.A.	40.6
BL (0-30)	0.0	N.A.	0.0
BM (30-60)	0.0	N.A.	0.0
BH (60-80)	0.0	N.A.	0.0
BVH(80-90)	0.0	N.A.	0.0
UL (90-100)	20.9	N.A.	6.9
UH (100-180)	5.9	N.A.	1.9
Total	304.9	N.A.	100.0

BUG Rating B0-U2-G2



Mounting Height = 1.5 ft. Grid Spacing = 3.5 ft.

Luminaire Lumens



In the interest of product improvement, BEGA reserves the right to make technical changes without notice.

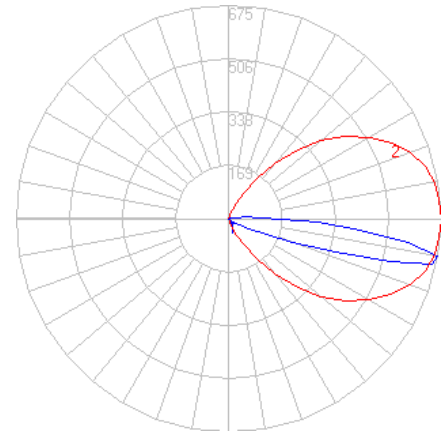
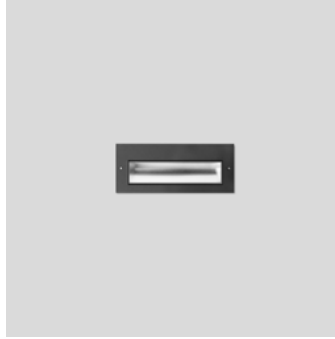
BEGA 1000 Bega Way, Carpinteria, CA 93013 (805)684-0533 Fax (805)566-9474 www.bega-us.com © Copyright BEGA-US 2019

9/24/2019

BEGA

Photometric Filename: 24063K35.ies

TEST: BE_24063K4
TEST LAB: BEGA
DATE: 10/10/2017
LUMINAIRE: 24 063K35
LAMP: 5.1W LED



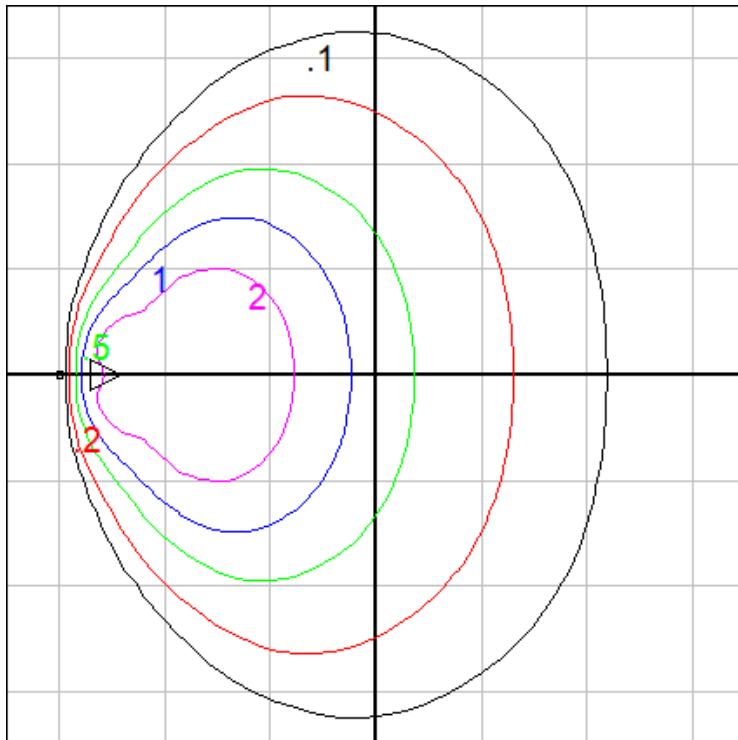
Characteristics

IES Classification	Type IV
Longitudinal Classification	Very Short
Lumens Per Lamp	N.A. (absolute)
Total Lamp Lumens	N.A. (absolute)
Luminaire Lumens	302
Downward Total Efficiency	N.A.
Total Luminaire Efficiency	N.A.
Luminaire Efficacy Rating (LER)	44
Total Luminaire Watts	6.8
Ballast Factor	1.00
Upward Waste Light Ratio	0.09
Max. Cd.	675.18 (0H, 80V)
Max. Cd. (<90 Vert.)	675.18 (0H, 80V)
Max. Cd. (At 90 Deg. Vert.)	176.913 (58.6%Lum)
Max. Cd. (80 to <90 Deg. Vert.)	675.18 (223.6%Lum)
Cutoff Classification (deprecated)	N.A. (absolute)

Lum. Classification System (LCS)

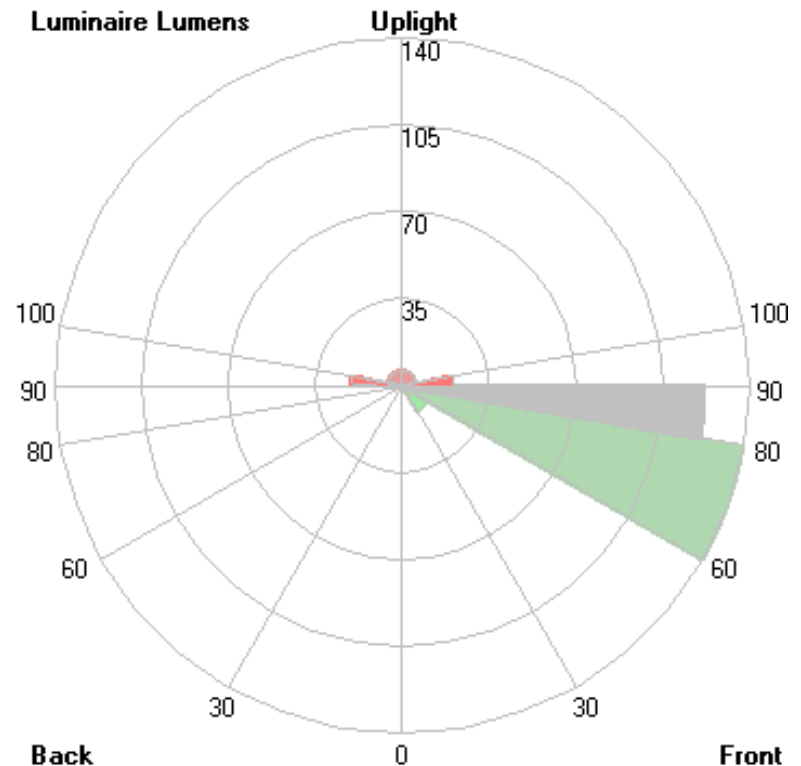
LCS Zone	Lumens	%Lamp	%Lum
FL (0-30)	0.3	N.A.	0.1
FM (30-60)	12.1	N.A.	4.0
FH (60-80)	140.4	N.A.	46.5
FVH(80-90)	122.5	N.A.	40.6
BL (0-30)	0.0	N.A.	0.0
BM (30-60)	0.0	N.A.	0.0
BH (60-80)	0.0	N.A.	0.0
BVH(80-90)	0.0	N.A.	0.0
UL (90-100)	20.7	N.A.	6.9
UH (100-180)	5.8	N.A.	1.9
Total	301.8	N.A.	100.0

BUG Rating B0-U2-G2



Mounting Height = 1.5 ft. Grid Spacing = 3.5 ft.

Luminaire Lumens



In the interest of product improvement, BEGA reserves the right to make technical changes without notice.

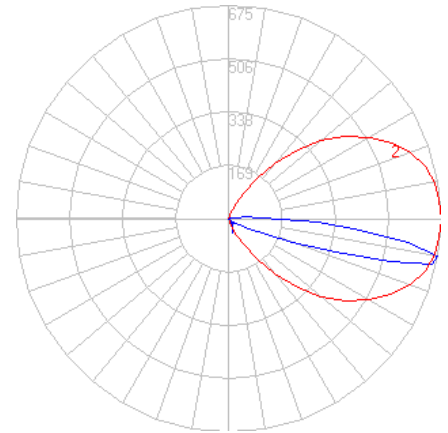
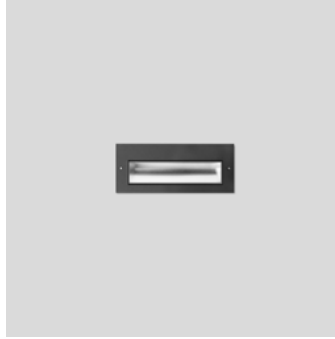
BEGA 1000 Bega Way, Carpinteria, CA 93013 (805)684-0533 Fax (805)566-9474 www.bega-us.com © Copyright BEGA-US 2019

9/24/2019

BEGA

Photometric Filename: 24063K3.ies

TEST: BE_24063K4
 TEST LAB: BEGA
 DATE: 10/10/2017
 LUMINAIRE: 24 063K3
 LAMP: 5.1W LED



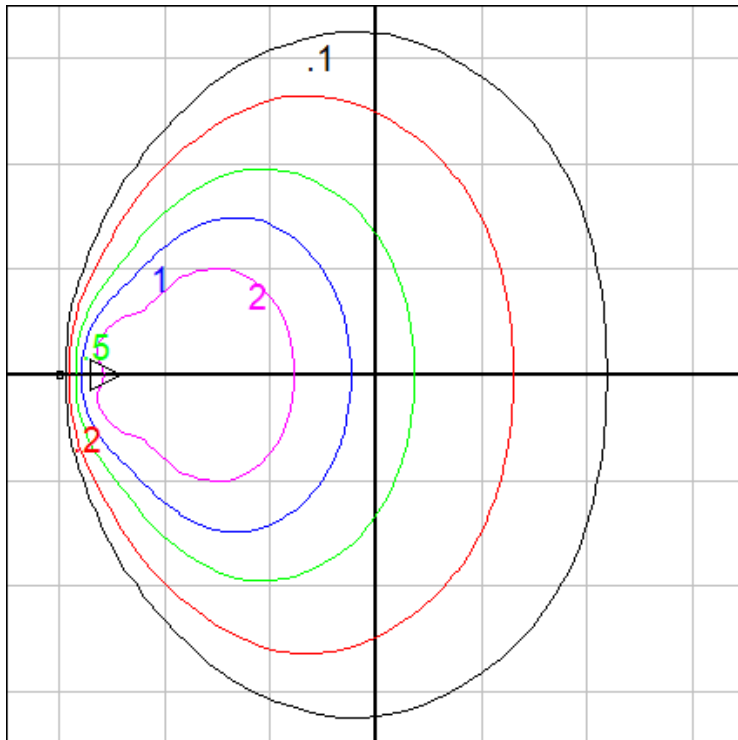
Characteristics

IES Classification	Type IV
Longitudinal Classification	Very Short
Lumens Per Lamp	N.A. (absolute)
Total Lamp Lumens	N.A. (absolute)
Luminaire Lumens	302
Downward Total Efficiency	N.A.
Total Luminaire Efficiency	N.A.
Luminaire Efficacy Rating (LER)	44
Total Luminaire Watts	6.8
Ballast Factor	1.00
Upward Waste Light Ratio	0.09
Max. Cd.	675.18 (0H, 80V)
Max. Cd. (<90 Vert.)	675.18 (0H, 80V)
Max. Cd. (At 90 Deg. Vert.)	176.913 (58.6%Lum)
Max. Cd. (80 to <90 Deg. Vert.)	675.18 (223.6%Lum)
Cutoff Classification (deprecated)	N.A. (absolute)

Lum. Classification System (LCS)

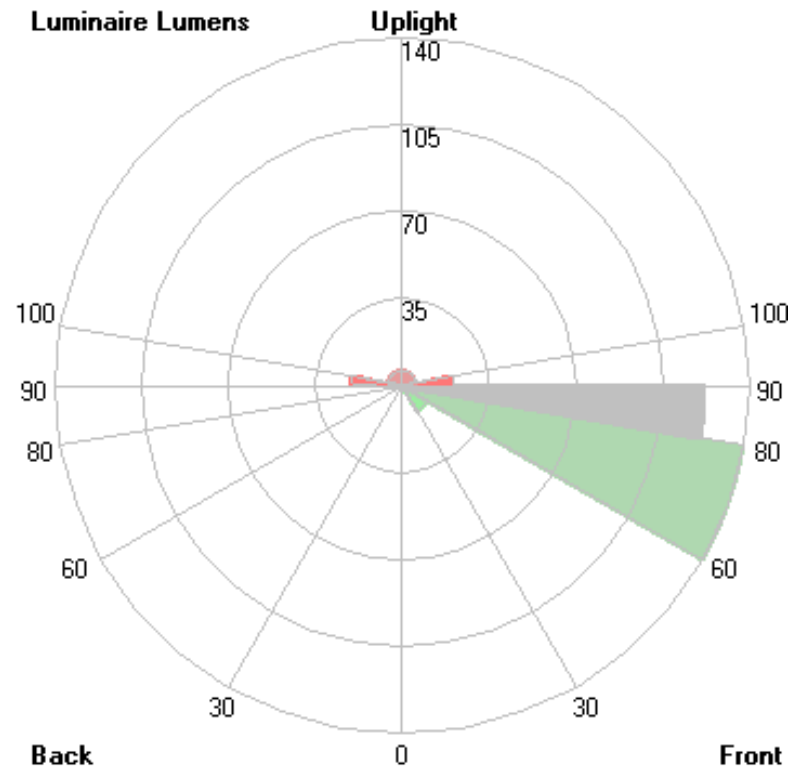
LCS Zone	Lumens	%Lamp	%Lum
FL (0-30)	0.3	N.A.	0.1
FM (30-60)	12.1	N.A.	4.0
FH (60-80)	140.4	N.A.	46.5
FVH(80-90)	122.5	N.A.	40.6
BL (0-30)	0.0	N.A.	0.0
BM (30-60)	0.0	N.A.	0.0
BH (60-80)	0.0	N.A.	0.0
BVH(80-90)	0.0	N.A.	0.0
UL (90-100)	20.7	N.A.	6.9
UH (100-180)	5.8	N.A.	1.9
Total	301.8	N.A.	100.0

BUG Rating B0-U2-G2



Mounting Height = 1.5 ft. Grid Spacing = 3.5 ft.

Luminaire Lumens

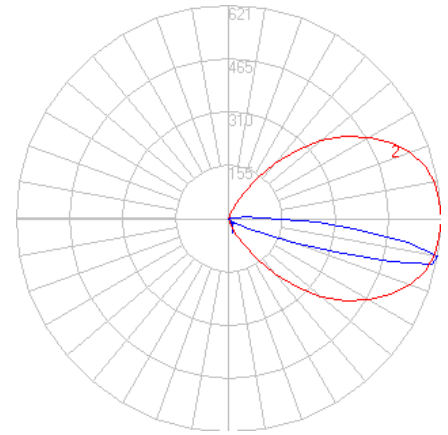
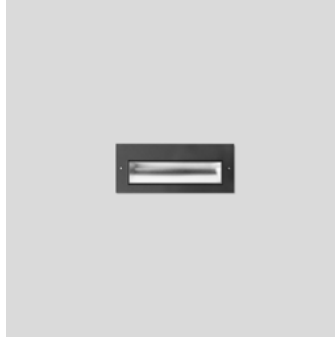


In the interest of product improvement, BEGA reserves the right to make technical changes without notice.

BEGA

Photometric Filename: 24063K27.ies

TEST: BE_24063K4
TEST LAB: BEGA
DATE: 10/10/2017
LUMINAIRE: 24 063K27
LAMP: 5.1W LED



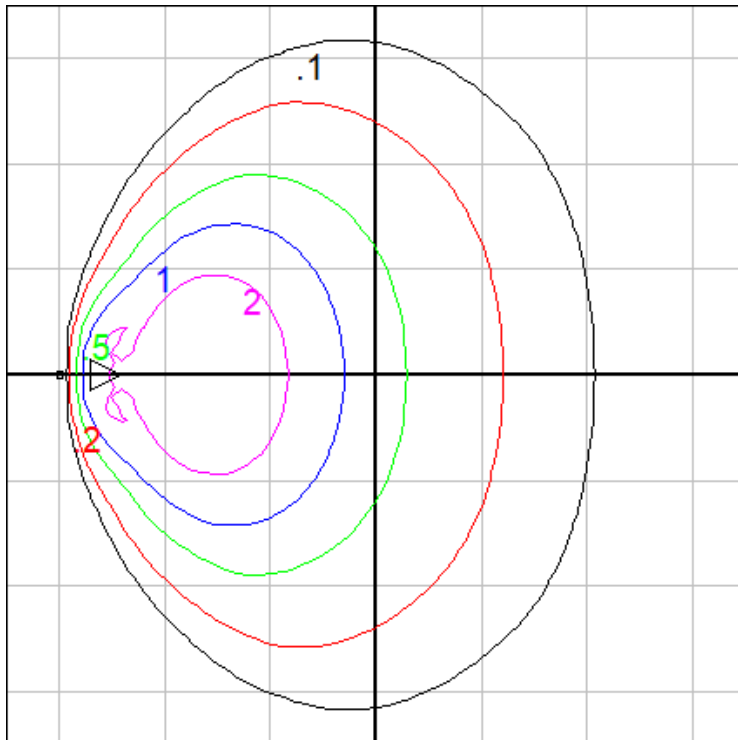
Characteristics

IES Classification	Type IV
Longitudinal Classification	Very Short
Lumens Per Lamp	N.A. (absolute)
Total Lamp Lumens	N.A. (absolute)
Luminaire Lumens	305
Downward Total Efficiency	N.A.
Total Luminaire Efficiency	N.A.
Luminaire Efficacy Rating (LER)	45
Total Luminaire Watts	6.8
Ballast Factor	1.00
Upward Waste Light Ratio	0.09
Max. Cd.	682 (0H, 80V)
Max. Cd. (<90 Vert.)	682 (0H, 80V)
Max. Cd. (At 90 Deg. Vert.)	178.7 (58.6%Lum)
Max. Cd. (80 to <90 Deg. Vert.)	682 (223.6%Lum)
Cutoff Classification (deprecated)	N.A. (absolute)

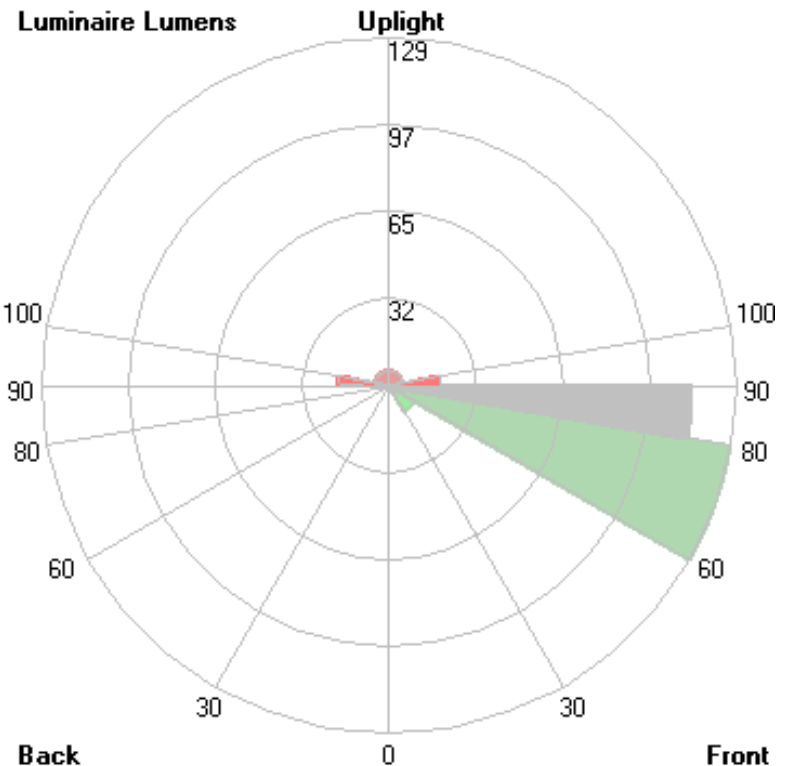
Lum. Classification System (LCS)

LCS Zone	Lumens	%Lamp	%Lum
FL (0-30)	0.3	N.A.	0.1
FM (30-60)	12.2	N.A.	4.0
FH (60-80)	141.8	N.A.	46.5
FVH(80-90)	123.8	N.A.	40.6
BL (0-30)	0.0	N.A.	0.0
BM (30-60)	0.0	N.A.	0.0
BH (60-80)	0.0	N.A.	0.0
BVH(80-90)	0.0	N.A.	0.0
UL (90-100)	20.9	N.A.	6.9
UH (100-180)	5.9	N.A.	1.9
Total	304.9	N.A.	100.0

BUG Rating B0-U2-G2



Mounting Height = 1.5 ft. Grid Spacing = 3.5 ft.



In the interest of product improvement, BEGA reserves the right to make technical changes without notice.

BEGA 1000 Bega Way, Carpinteria, CA 93013 (805)684-0533 Fax (805)566-9474 www.bega-us.com © Copyright BEGA-US 2019

9/24/2019