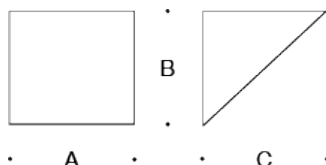


Tools Required:

3mm hex key
4mm hex key
Phillips screwdriver medium



Dimensions

A: 6-5/8"
B: 6-5/8"
C: 7-1/8"



Protection Class: IP65

Weight: 4.74 lbs.

Notice to Installer for 22 433:

1. For wall applications only.
2. Mounts directly to 19 538 small opening wiring box (provided). Dimensions for the wiring box is shown in Figure 1.

IMPORTANT: DO NOT MAKE WALL CUTOUT FOR STANDARD WIRING BOX. OPENING MUST BE MADE FOR BEGA 19 538 WIRING BOX OR CUTOUT WILL BE VISIBLE.

3. In conformance with UL Standard 1598, a silicone based sealant must be used between luminaire and supporting wall.
4. See 19 538 install instructions (supplied) for additional details on wiring box installation.
5. For up or down orientation.
6. Integral LED module and LED driver supplied by BEGA.

22 433 - installation:

1. Loosen screw at canopy and remove mounting plate.
2. Feed luminaire wires through back of luminaire mounting plate.
3. Make supply wiring and luminaire wiring connections in small opening wiring box:
MAIN VOLTAGE SUPPLY WIRE TO BLACK LUMINAIRE WIRE
NEUTRAL (COMMON) SUPPLY WIRE TO WHITE LUMINAIRE WIRE
GREEN GROUND WIRE TO GREEN LUMINAIRE WIRE
4. Attach mounting strap to wiring box using (2) 1/2" screws (shown in Figure 2).
5. Attach mounting plate to mounting strap and wiring box by using (2) 8-32 x 1 1/2" mounting screws.
6. Place a small bead of silicone around the back side of the luminaire base that will come in contact with the finished wall (exterior applications only).
7. Mount luminaire to mounting plate and tighten canopy screw to secure luminaire, making sure orientation label is aimed correctly.

Figure 1

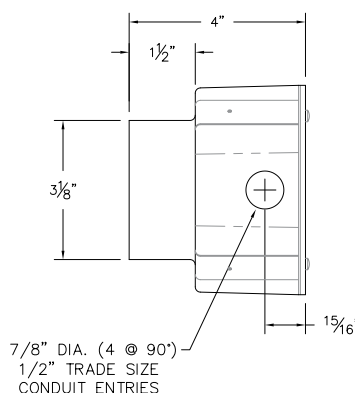
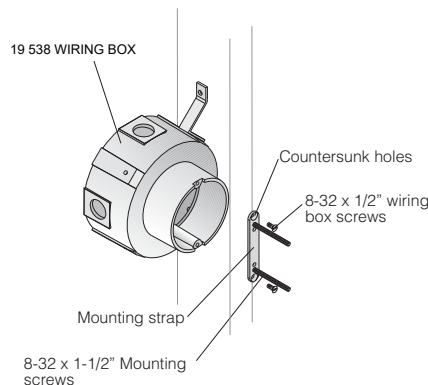


Figure 2



Relamping/Maintenance

Clean luminaire regularly with solvent-free cleansers from dirt and debris. Do not use high pressure cleaners.

Lamp: 25.3W LED

Accessories

Please refer to the appropriate accessory installation sheet for further instruction when applicable.

Wiring Box

19 538

Replacement Parts

Description

Diffuser
Lens Gasket
LED Driver (120-277V)
LED Module (2700K)
LED Module (3000K)
LED Module (3500K)
LED Module (4000K)

Part No

(1X) 140390
(1X) 830828
(1X) 75935
(1X) LED-0260/827
(1X) LED-0260/830
(1X) LED-0260/835
(1X) LED-0260/840

Product Safety Warnings:

THIS PRODUCT MUST BE INSTALLED IN ACCORDANCE WITH THE APPLICABLE INSTALLATION CODE BY A PERSON FAMILIAR WITH THE CONSTRUCTION AND OPERATION OF THE PRODUCT AND THE HAZARDS INVOLVED. SUITABLE FOR WET LOCATIONS.

MIN 90°C SUPPLY CONDUCTORS.

CE PRODUIT DOIT ÊTRE INSTALLÉ SELON LE CODE D'INSTALLATION PERTINENT, PAR UNE PERSONNE QUI CONNAÎT BIEN LE PRODUIT ET SON FONCTIONNEMENT AINSI QUE LES RISQUES INHÉRENTS. CONVIENT AUX EMPLACEMENTS MOUILLÉS.

LES FILS D'ALIMENTATION 90°C MIN.
