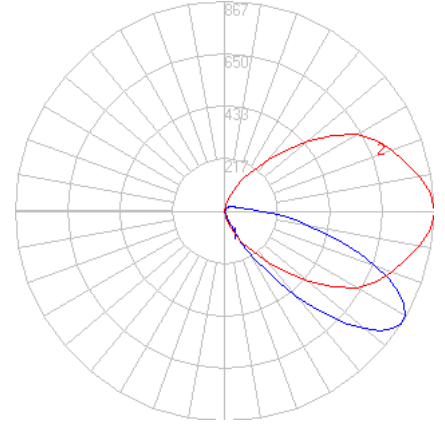


# BEGA

Photometric Filename: 22056.ies

TEST: BE\_22056  
 TEST LAB: BEGA  
 DATE: 3/9/2018  
 LUMINAIRE: 22 056  
 LAMP: 11.7W LED



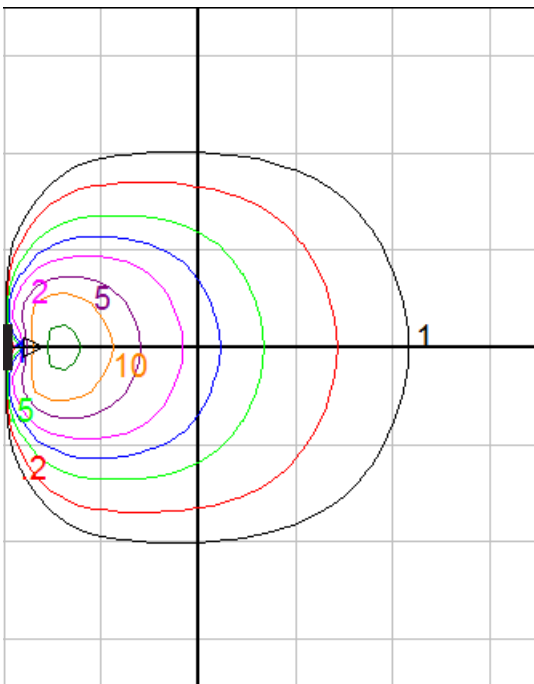
### Characteristics

IES Classification	Type IV
Longitudinal Classification	Very Short
Lumens Per Lamp	N.A. (absolute)
Total Lamp Lumens	N.A. (absolute)
Luminaire Lumens	777
Downward Total Efficiency	N.A.
Total Luminaire Efficiency	N.A.
Luminaire Efficacy Rating (LER)	49
Total Luminaire Watts	16
Ballast Factor	1.00
Upward Waste Light Ratio	0.10
Max. Cd.	866.88 (0H, 57.5V)
Max. Cd. (<90 Vert.)	866.88 (0H, 57.5V)
Max. Cd. (At 90 Deg. Vert.)	156.06 (20.1%Lum)
Max. Cd. (80 to <90 Deg. Vert.)	353.61 (45.5%Lum)
Cutoff Classification (deprecated)	N.A. (absolute)

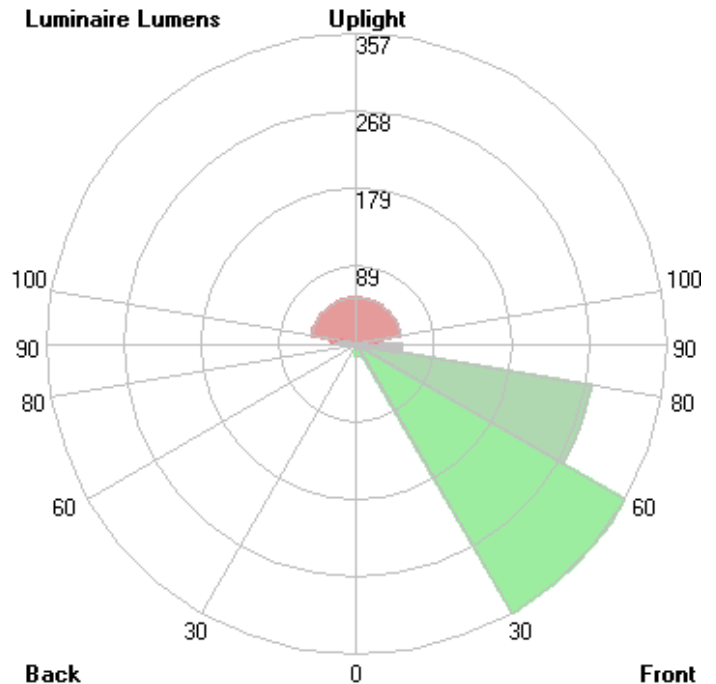
### Lum. Classification System (LCS)

LCS Zone	Lumens	%Lamp	%Lum
FL (0-30)	14.2	N.A.	1.8
FM (30-60)	357.1	N.A.	45.9
FH (60-80)	274.5	N.A.	35.3
FVH (80-90)	52.8	N.A.	6.8
BL (0-30)	0.0	N.A.	0.0
BM (30-60)	0.0	N.A.	0.0
BH (60-80)	0.0	N.A.	0.0
BVH (80-90)	0.0	N.A.	0.0
UL (90-100)	26.7	N.A.	3.4
UH (100-180)	52.1	N.A.	6.7
<b>Total</b>	<b>777.4</b>	<b>N.A.</b>	<b>100.0</b>

**BUG Rating B0-U3-G1**



Mounting Height = 3 ft. Grid Spacing = 5 ft.



In the interest of product improvement, BEGA reserves the right to make technical changes without notice.